

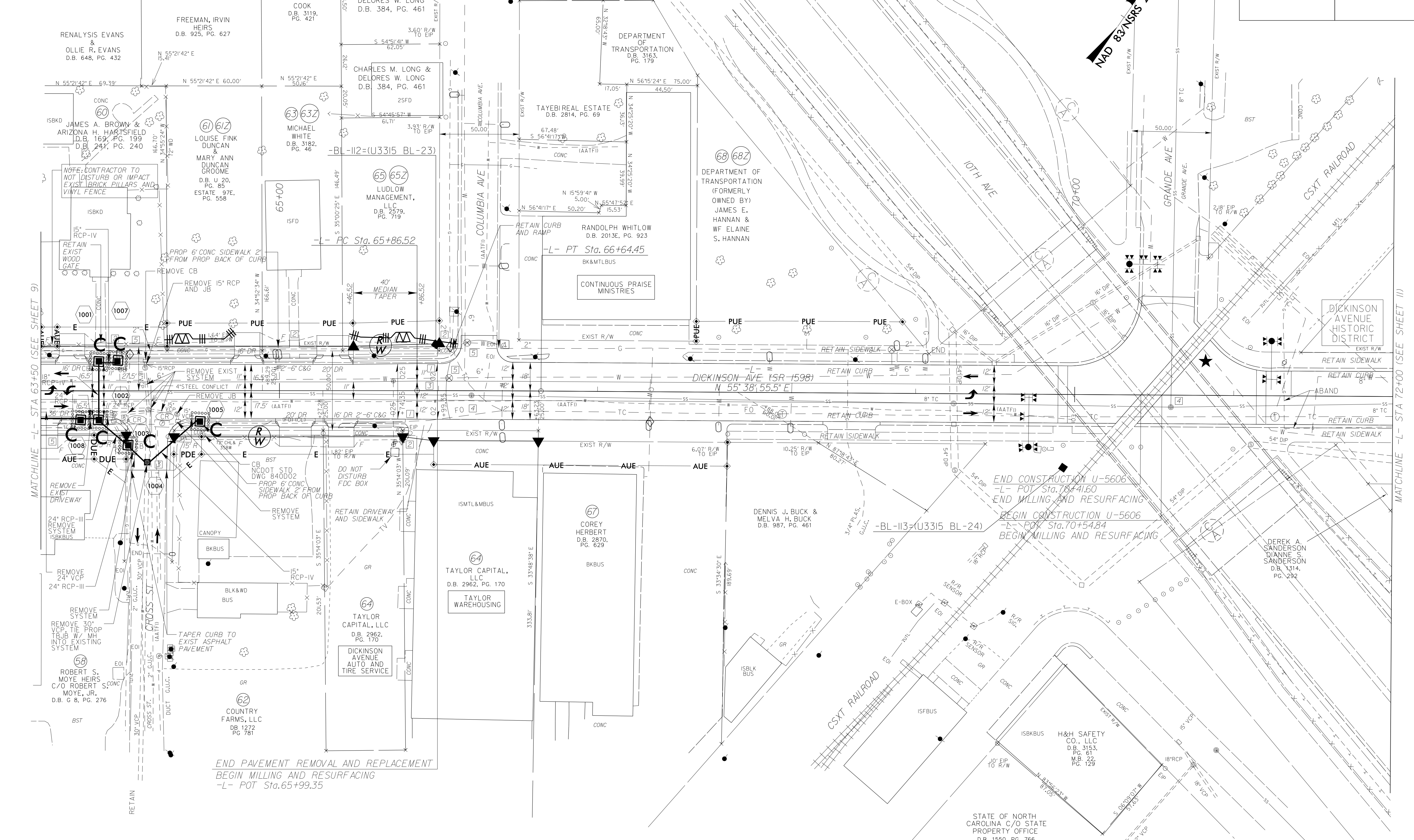
PROJECT REFERENCE NO.	SHEET NO.
U-5606	EC-18/CONST.10
RW SHEET NO.	
ROADWAY DESIGN ENGINEER	HYDRAULICS ENGINEER

- NOTES:
- TIE TO EXIST CURB AND GUTTER AT EXIST CONCRETE JOINT. TRANSITION 2'-6" C&G TO MATCH EXIST GUTTER WIDTH AS NECESSARY.
 - TIE TO EXISTING CONCRETE SIDEWALK LIMITS OF PAVEMENT REMOVAL AND REPLACEMENT.
 - ADJUSTMENT OF MANHOLE.
 - ADJUSTMENT OF METER OR VALVE BOX.
 - REMOVE AND STOCKPILE EXISTING GRANITE CURB.
 - RETAIN EXISTING MAST ARM.

-L-
 PI Sta. 66+25.48
 $\Delta = 0^{\circ}22'19.5''$ (RT)
 $D = 0^{\circ}28'38.9''$
 $L = 77.93'$
 $T = 38.96'$
 $R = 12,000.00'$
 SE = EXISTING
 RO = EXISTING

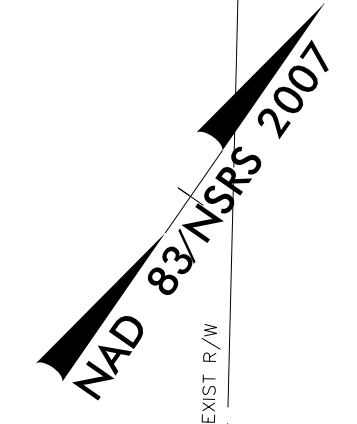
UTILIZE FABRIC INLET PROTECTION IN LIEU OF TYPE C INLET PROTECTION WHERE WATER MAY POND ON ROADWAY USED BY PUBLIC TRAFFIC

REVISIONS



MATCHLINE -L- STA 63+50 (SEE SHEET 9)

MATCHLINE -L- STA 72+00 (SEE SHEET 11)



END PAVEMENT REMOVAL AND REPLACEMENT
 BEGIN MILLING AND RESURFACING
 -L- POT Sta. 65+99.35

END CONSTRUCTION U-5606
 -L- POT Sta. 70+41.60
 END MILLING AND RESURFACING
 BEGIN CONSTRUCTION U-5606
 -L- POT Sta. 70+54.84
 BEGIN MILLING AND RESURFACING

STATE OF NORTH CAROLINA
 C/O STATE PROPERTY OFFICE
 D.B. 1550, PG. 766

★ TRAFFIC SIGNAL
 SEE SHEET 16 FOR -L- PROFILE

\$FILE\$
 \$DATE\$