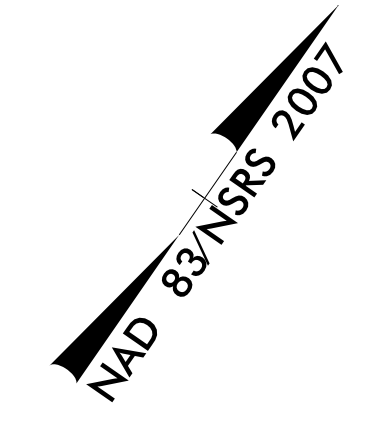
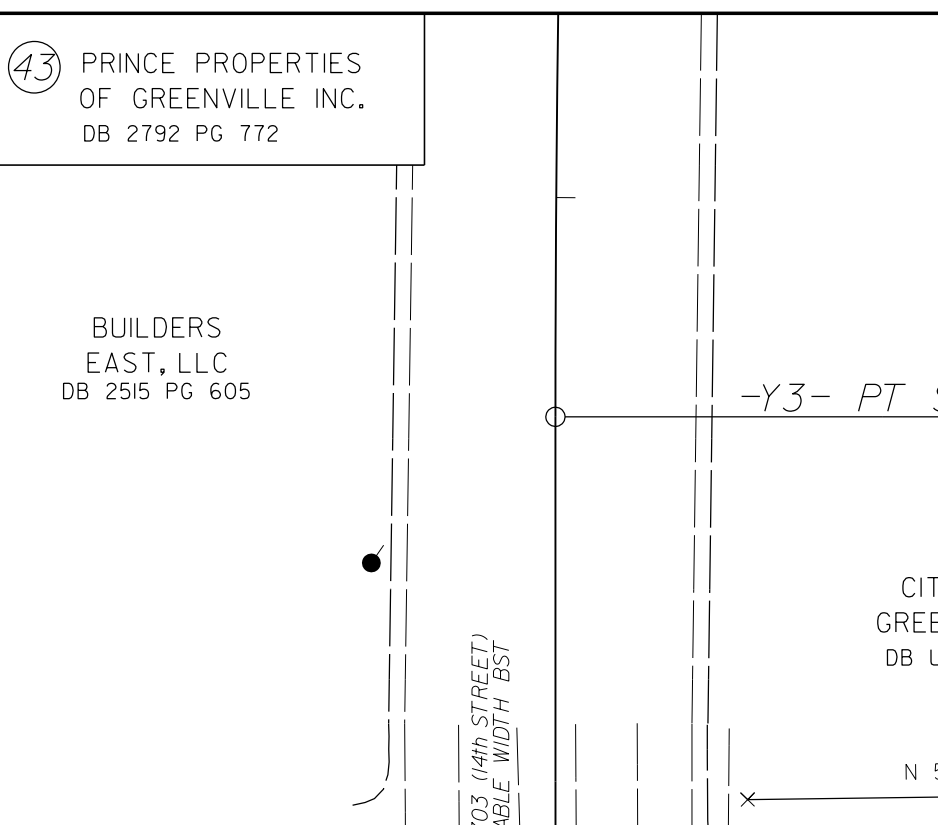
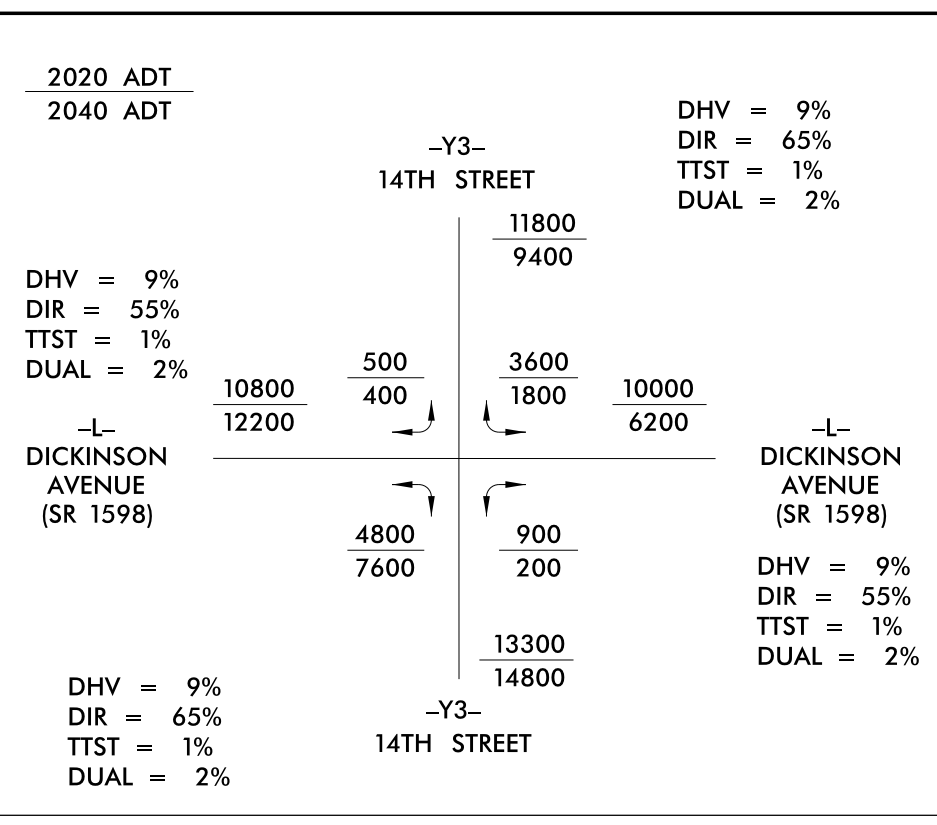


PROJECT REFERENCE NO.	SHEET NO.
U-5606	EC-17/CONST.9
ROADWAY DESIGN ENGINEER	HYDRAULICS ENGINEER

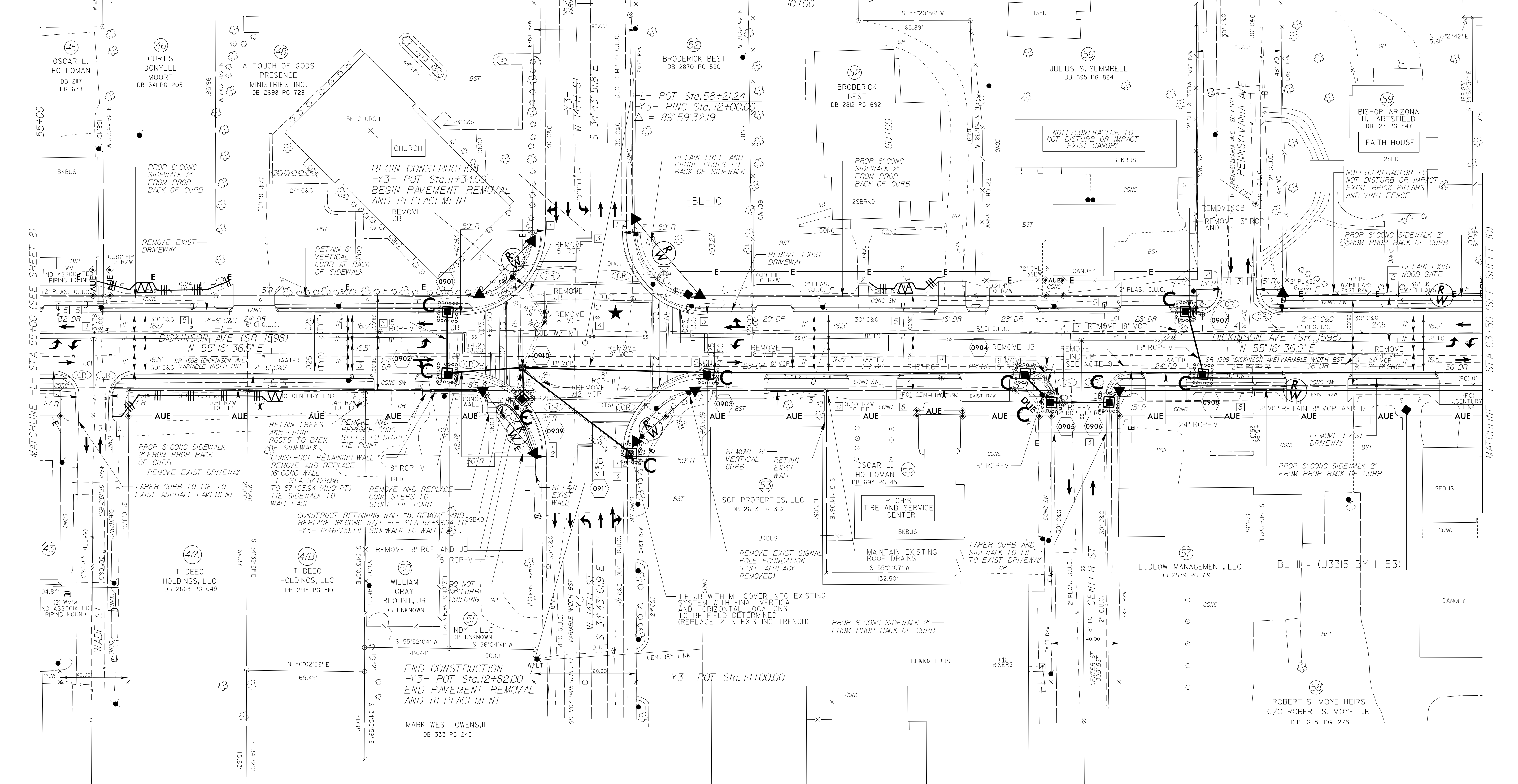
UTILIZE FABRIC INLET PROTECTION IN LIEU OF TYPE C INLET PROTECTION WHERE WATER MAY POND ON ROADWAY USED BY PUBLIC TRAFFIC



- NOTES:
- TIE TO EXIST CURB AND GUTTER AT EXIST CONCRETE JOINT
 - TRANSITION 2'-6" C&G TO MATCH EXIST GUTTER WIDTH AS NECESSARY
 - LIMITS OF PAVEMENT REMOVAL AND REPLACEMENT
 - ADJUSTMENT OF MANHOLE
 - ADJUSTMENT OF METER OR VALVE BOX
 - REMOVE AND STOCKPILE EXISTING GRANITE CURB
 - RETAIN EXISTING MAST ARM
 - SAWCUT A NEAT EDGE LINE AND REMOVE EXIST PARKING LOT PAVEMENT
 - REMOVE EXIST CB AND 15' RCP



REVISIONS



★ TRAFFIC SIGNAL
 SEE SHEET 15 FOR -L- PROFILE
 SEE SHEET 18 FOR -Y3- PROFILE
 SEE SHEET W-6 FOR RETAINING WALL #7 PROFILE
 SEE SHEET W-7 FOR RETAINING WALL #8 PROFILE

\$FILE\$
 \$DATE\$