

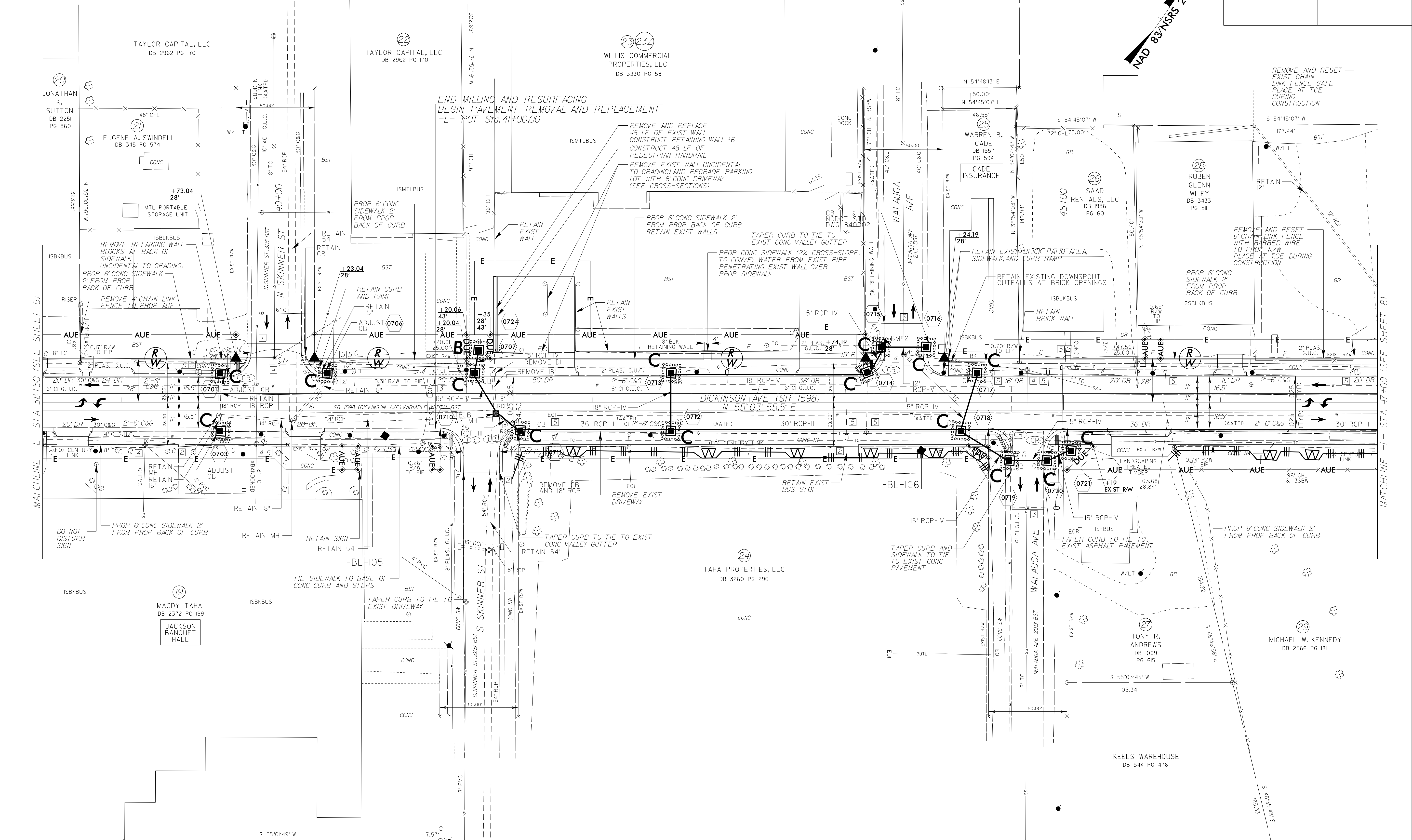
PROJECT REFERENCE NO.	SHEET NO.
U-5606	EC-15/CONST.7
R/W SHEET NO.	
ROADWAY DESIGN ENGINEER	HYDRAULICS ENGINEER

UTILIZE FABRIC INLET PROTECTION IN LIEU OF TYPE C INLET PROTECTION WHERE WATER MAY POND ON ROADWAY USED BY PUBLIC TRAFFIC

NAD 83 NSRS 2007

- NOTES:
- TIE TO EXIST CURB AND GUTTER AT EXIST CONCRETE JOINT
 - TRANSITION 2'-6" C&G TO MATCH EXIST GUTTER WIDTH AS NECESSARY
 - TIE TO EXISTING CONCRETE SIDEWALK
 - LIMITS OF PAVEMENT REMOVAL AND REPLACEMENT
 - ADJUSTMENT OF MANHOLE
 - ADJUSTMENT OF METER OR VALVE BOX
 - REMOVE AND STOCKPILE EXISTING GRANITE CURB
 - RETAIN EXISTING MAST ARM

REVISIONS



MATCHLINE -L- STA 38+50 (SEE SHEET 6)

MATCHLINE -L- STA 47+00 (SEE SHEET 8)

END MILLING AND RESURFACING
BEGIN PAVEMENT REMOVAL AND REPLACEMENT
-L- POT Sta. 41+00.00

NOTE: CONTRAC TO BE T... AREAS 1

SEE SHEET 14 FOR -L- PROFILE
SEE SHEET W-5 FOR RETAINING WALL #6 PROFILE

\$DATE\$
\$FILE\$