

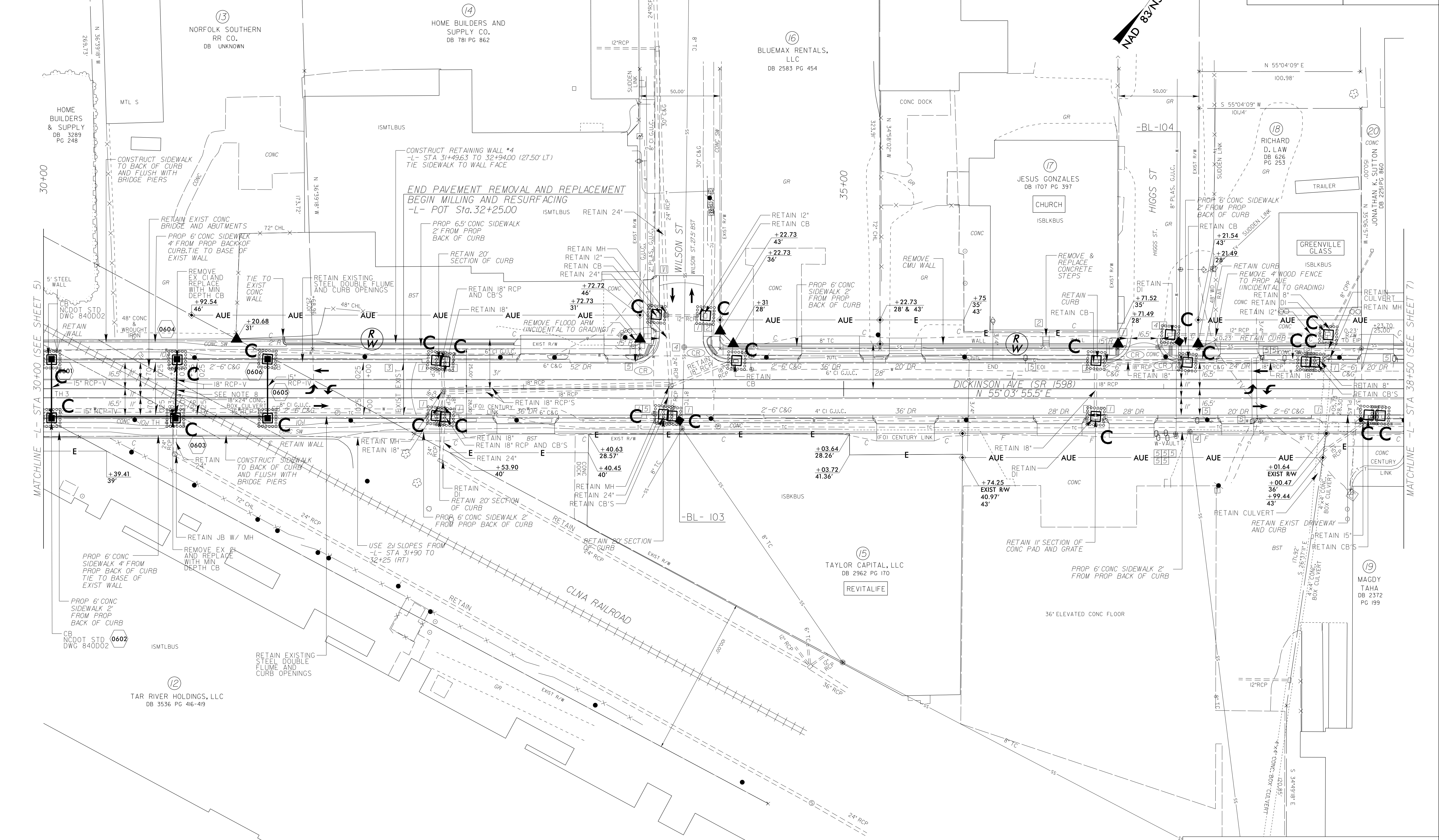
PROJECT REFERENCE NO.	SHEET NO.
U-5606	EC-14/CONST.6
RW SHEET NO.	
ROADWAY DESIGN ENGINEER	HYDRAULICS ENGINEER

- NOTES:
- TIE TO EXIST CURB AND GUTTER AT EXIST CONCRETE JOINT
TRANSITION 2'-6" C&G TO MATCH EXIST GUTTER WIDTH AS NECESSARY
 - TIE TO EXISTING CONCRETE SIDEWALK
 - LIMITS OF PAVEMENT REMOVAL AND REPLACEMENT
 - ADJUSTMENT OF MANHOLE
 - ADJUSTMENT OF METER OR VALVE BOX
 - REMOVE AND STOCKPILE EXISTING GRANITE CURB
 - RETAIN EXISTING MAST ARM
 - REMOVE EXIST BOX CULVERT AND REPLACE WITH 18" RCP - IV

UTILIZE FABRIC INLET PROTECTION IN LIEU OF TYPE C INLET PROTECTION WHERE WATER MAY POND ON ROADWAY USED BY PUBLIC TRAFFIC

REVISIONS

NAD 83 NSRS 2007



MATCHLINE - STA 30+00 (SEE SHEET 5)

MATCHLINE - STA 38+50 (SEE SHEET 7)

\$FILE\$
\$DATE\$

SEE SHEET 14 FOR -L- PROFILE
SEE SHEET W-4 FOR RETAINING WALL #4 PROFILE