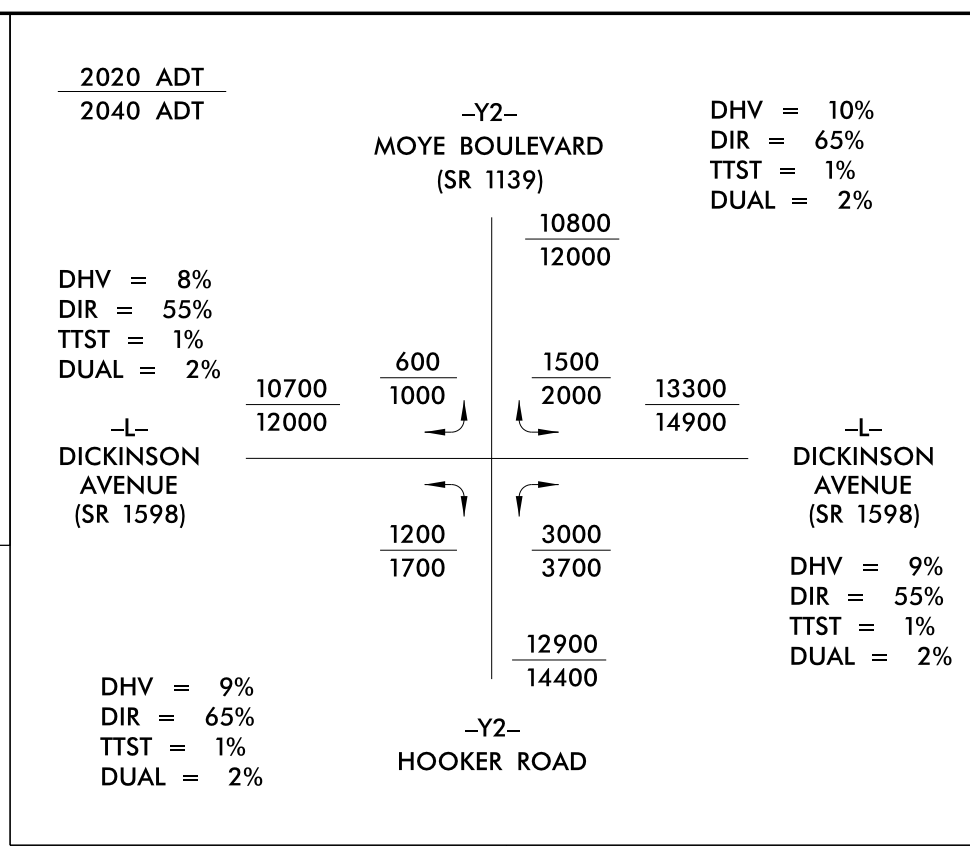


| | |
|-------------------------|---------------------|
| PROJECT REFERENCE NO. | SHEET NO. |
| U-5606 | EC-13/CONST.5 |
| RW SHEET NO. | |
| ROADWAY DESIGN ENGINEER | HYDRAULICS ENGINEER |

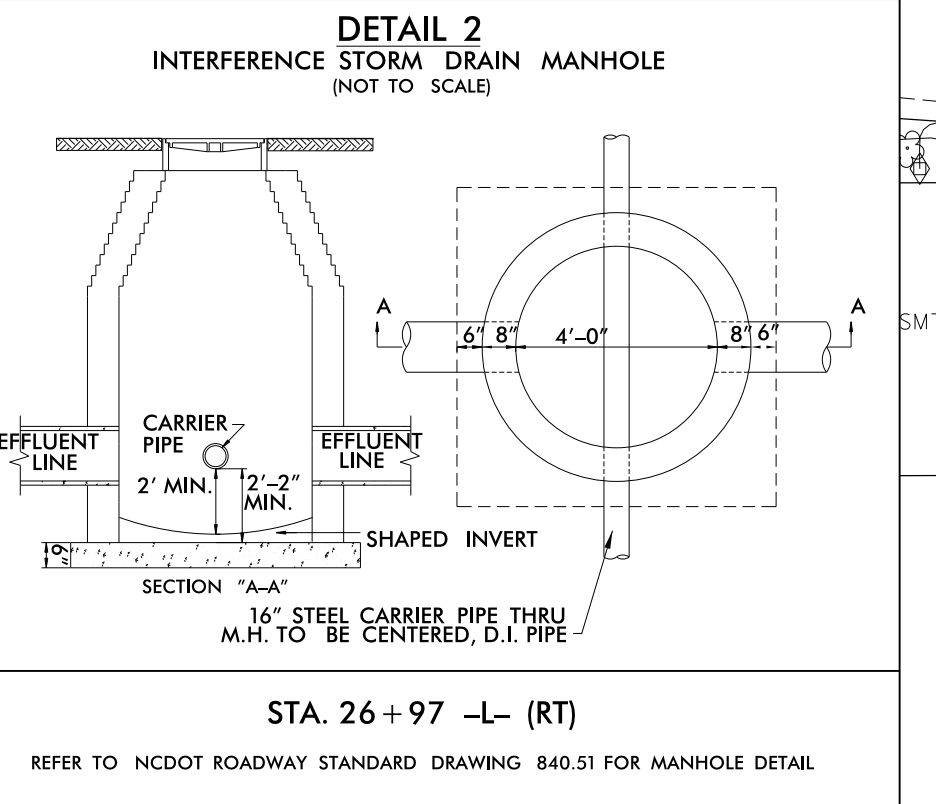
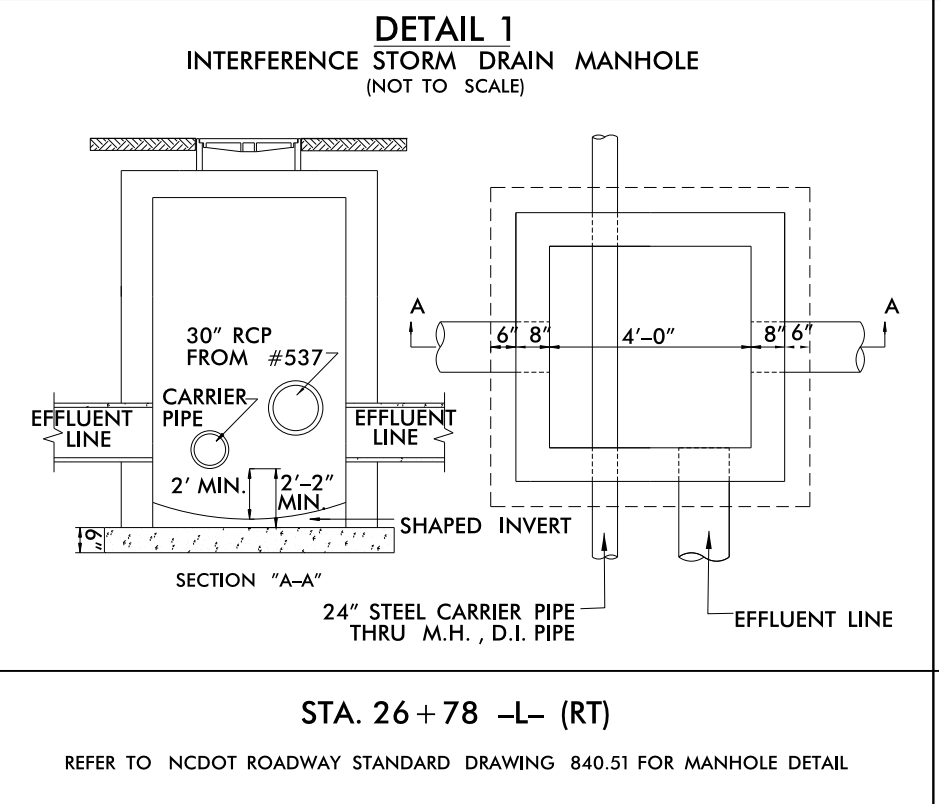
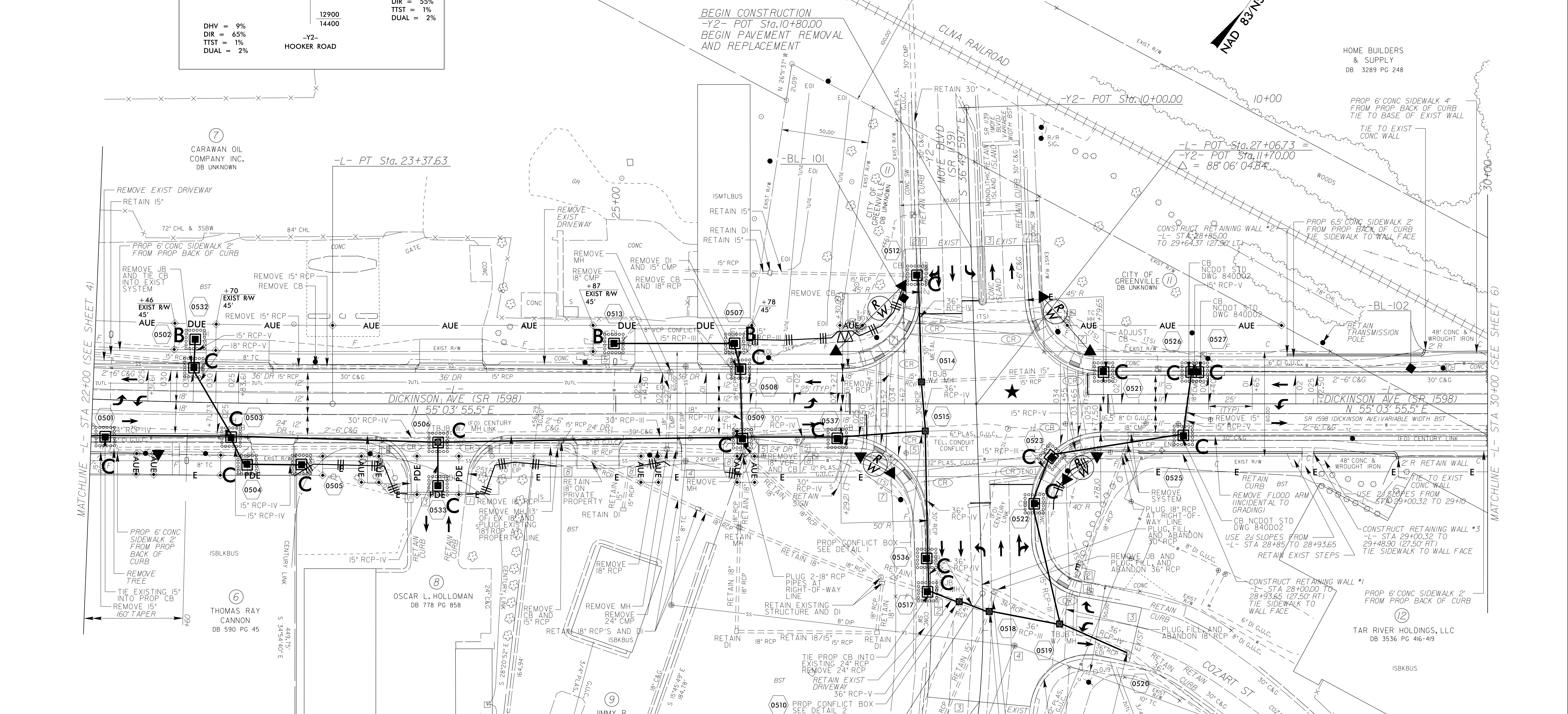
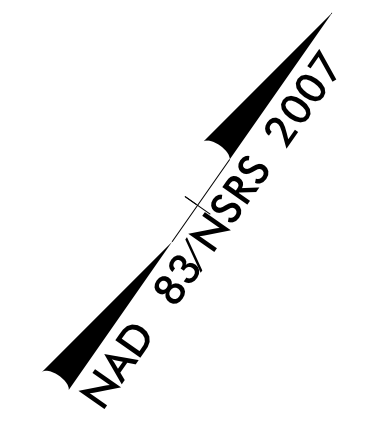
- NOTES:
- TIE TO EXIST CURB AND GUTTER AT EXIST CONCRETE JOINT TRANSITION 2'-6" C&G TO MATCH EXIST GUTTER WIDTH AS NECESSARY
 - TIE TO EXISTING CONCRETE SIDEWALK LIMITS OF PAVEMENT REMOVAL AND REPLACEMENT
 - ADJUSTMENT OF MANHOLE
 - ADJUSTMENT OF METER OR VALVE BOX
 - REMOVE AND STOCKPILE EXISTING GRANITE CURB
 - RETAIN EXISTING MAST ARM
 - SAWCUT A NEAT EDGE LINE AND REMOVE EXIST PARKING LOT PAVEMENT



-L- PI Sta. 22+35.26
 $\Delta = 3' 21'' 08.7''$ (LT)
 $D = 1' 38'' 13.3''$
 $L = 204.79'$
 $T = 102.42'$
 $R = 3,500.00'$
 $SE = \text{SEE PLANS}$
 $RO = \text{SEE PLANS}$

-Y2- PI Sta. 13+76.05
 $\Delta = 22' 00'' 37.0''$ (RT)
 $D = 1' 27'' 33.0''$
 $L = 192.08'$
 $T = 97.24'$
 $R = 500.00'$
 $SE = \text{EXISTING}$
 $RO = \text{EXISTING}$

UTILIZE FABRIC INLET PROTECTION IN LIEU OF TYPE C INLET PROTECTION WHERE WATER MAY POND ON ROADWAY USED BY PUBLIC TRAFFIC



★ TRAFFIC SIGNAL

SEE SHEET 13 FOR -L- PROFILE
 SEE SHEET 17 FOR -Y2- PROFILE
 SEE SHEET W-1 FOR RETAINING WALL #1 PROFILE
 SEE SHEET W-2 FOR RETAINING WALL #2 PROFILE
 SEE SHEET W-3 FOR RETAINING WALL #3 PROFILE

REVISIONS

\$FILE\$

\$DATE\$