

PROJECT REFERENCE NO.	SHEET NO.
U-5606	EC-11/CONST.12
R/W SHEET NO.	
ROADWAY DESIGN ENGINEER	HYDRAULICS ENGINEER

- NOTES:
- TIE TO EXIST CURB AND GUTTER AT EXIST CONCRETE JOINT
 - TRANSITION 2'-6" C&G TO MATCH EXIST GUTTER WIDTH AS NECESSARY
 - TIE TO EXISTING CONCRETE SIDEWALK LIMITS OF PAVEMENT REMOVAL AND REPLACEMENT
 - ADJUSTMENT OF MANHOLE
 - ADJUSTMENT OF METER OR VALVE BOX
 - REMOVE AND STOCKPILE EXISTING GRANITE CURB
 - RETAIN EXISTING MAST ARM
 - PROP CONC/BRICK PAVEMENT SIDEWALK (VARI) ON PROP BACK OF CURB TIE TO EXIST BUILDING FACE
 - REPLACE IN EXISTING TRENCH
 - PROPOSED JB W/ MH
 - RETAIN EXIST CURB RAMP

2020 ADT	11800
2040 ADT	13100

DH = 8%	DIR = 60%	TTST = 1%	DUAL = 2%
5600	3400	4800	300
8400	4800	400	1500
	1100	100	300
	2300		
		9400	10500

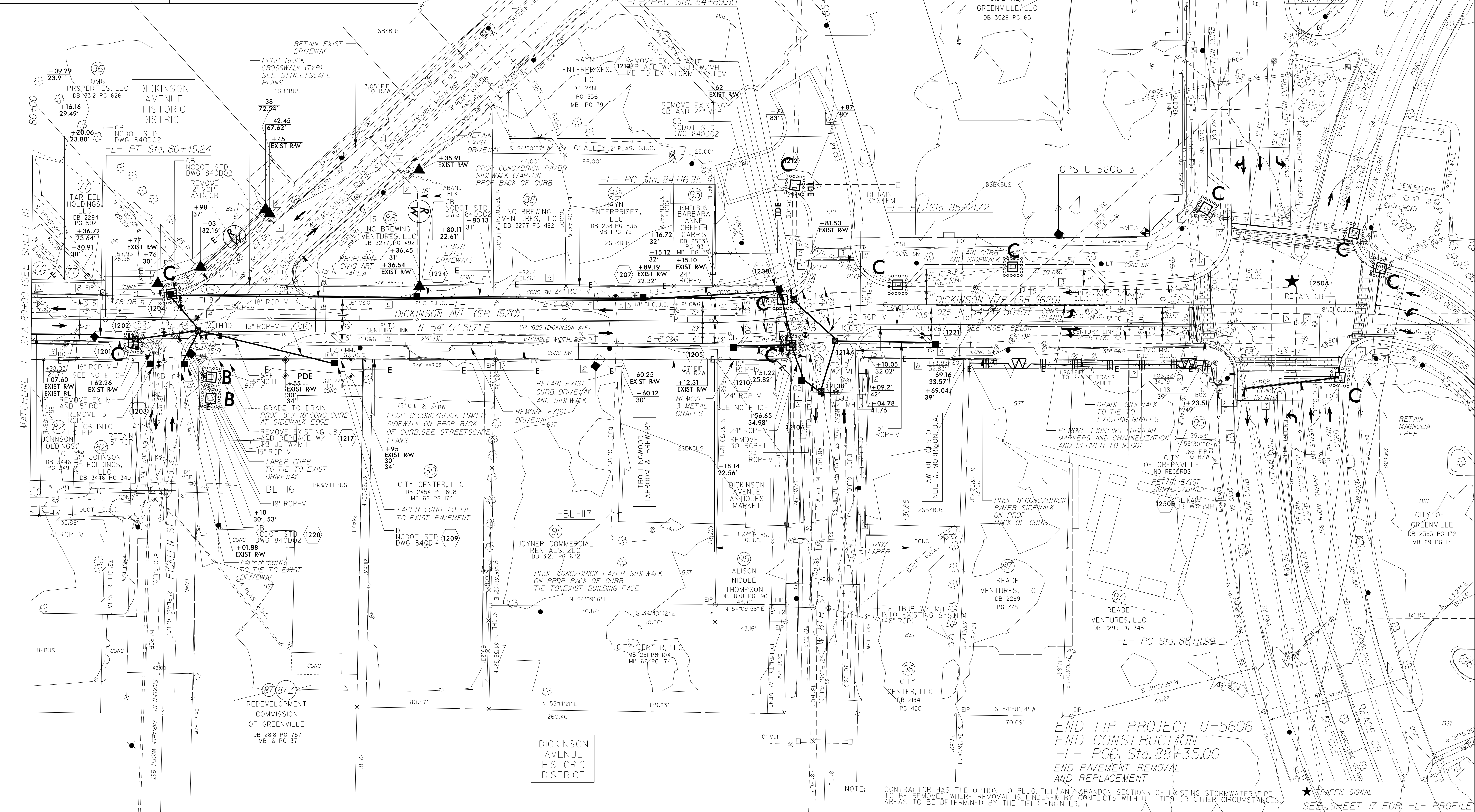
NOTE: PLACE TEMPORARY ROCK SEDIMENT DAMS TYPE - B AND TEMPORARY ROCK SILT CHECKS TYPE - A AT DRAINAGE OUTLETS.

CLEARING AND GRUBBING EROSION CONTROL FOR CONSTRUCTION SHEET 12

BRICK CROSSWALK SEE SHEET 2C-10

UTILIZE FABRIC INLET PROTECTION IN LIEU OF TYPE C INLET PROTECTION WHERE WATER MAY POND ON ROADWAY USED BY PUBLIC TRAFFIC

REVISIONS



END TIP PROJECT U-5606
 END CONSTRUCTION
 -L- POG Sta. 88+35.00
 END PAVEMENT REMOVAL AND REPLACEMENT

NOTE: CONTRACTOR HAS THE OPTION TO PLUG, FILL AND ABANDON SECTIONS OF EXISTING STORMWATER PIPE TO BE REMOVED WHERE REMOVAL IS HINDERED BY CONFLICTS WITH UTILITIES OR OTHER CIRCUMSTANCES. AREAS TO BE DETERMINED BY THE FIELD ENGINEER.

★ TRAFFIC SIGNAL
 SEE SHEET 17 FOR -L- PROFILE

FILE\$
 DATE\$