

PROJECT REFERENCE NO.	SHEET NO.
U-5606	EC-10/CONST.II
RW SHEET NO.	
ROADWAY DESIGN ENGINEER	HYDRAULICS ENGINEER

- NOTES:
- TIE TO EXIST CURB AND GUTTER AT EXIST CONCRETE JOINT TRANSITION 2'-6" C&G TO MATCH EXIST GUTTER WIDTH AS NECESSARY
  - TIE TO EXISTING CONCRETE SIDEWALK LIMITS OF PAVEMENT REMOVAL AND REPLACEMENT
  - ADJUSTMENT OF MANHOLE
  - ADJUSTMENT OF METER OR VALVE BOX
  - REMOVE AND STOCKPILE EXISTING GRANITE CURB
  - RETAIN EXISTING MAST ARM
  - PROP CONC SIDEWALK (VAR) ON PROP BACK OF CURB TIE TO EXIST BUILDING FACE
  - REMOVE EXISTING CONC ISLAND AT BACK OF CURB
  - PROP 6" CONC SIDEWALK AT BACK OF CURB
  - PROPOSED CIVIC ART AREA SEE STREETScape PLANS

NOTE: PLACE TEMPORARY ROCK SEDIMENT DAMS TYPE - B AND TEMPORARY ROCK SILT CHECKS TYPE - A AT DRAINAGE OUTLETS.

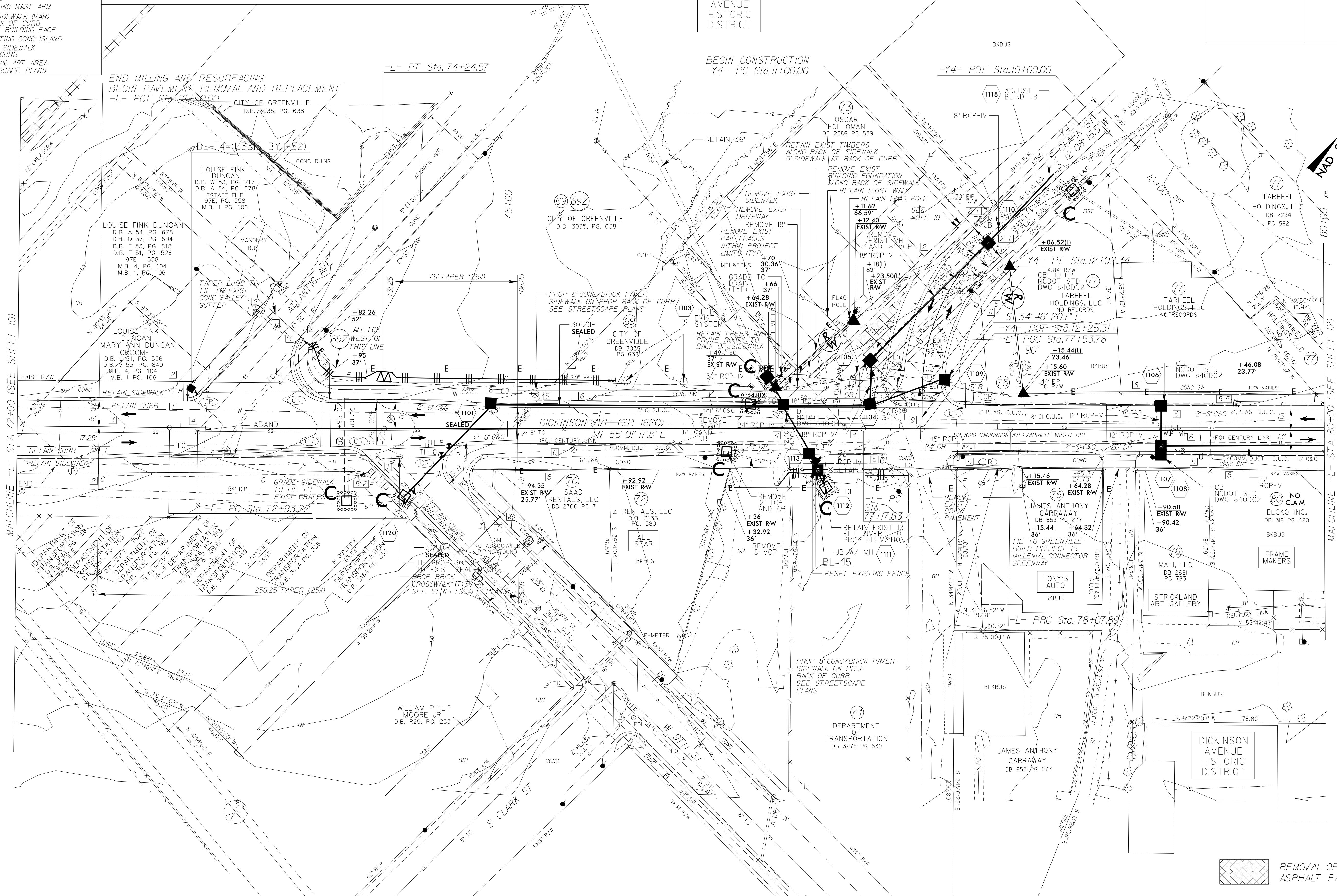
CLEARING AND GRUBBING EROSION CONTROL FOR CONSTRUCTION SHEET 11

75 MERRITT RENTALS, LLC DB 2539 PG 505

UTILIZE FABRIC INLET PROTECTION IN LIEU OF TYPE C INLET PROTECTION WHERE WATER MAY POND ON ROADWAY USED BY PUBLIC TRAFFIC

DICKINSON AVENUE HISTORIC DISTRICT

REVISIONS



MATCHLINE -L- STA 72+00 (SEE SHEET 10)

MATCHLINE -L- STA 80+00 (SEE SHEET 12)

NAD 83 NRS 2007

REMOVAL OF EXISTING ASPHALT PAVEMENT

NOTE: CONTRACTOR HAS THE OPTION TO PLUG, FILL, AND ABANDON SECTIONS OF EXISTING STORMWATER PIPE TO BE REMOVED WHERE REMOVAL IS HINDERED BY CONFLICTS WITH UTILITIES OR OTHER CIRCUMSTANCES. AREAS TO BE DETERMINED BY THE FIELD ENGINEER.

SEE SHEET 16 FOR -L- PROFILE  
SEE SHEET 18 FOR -Y4- PROFILE

\$FILE\$  
\$DATE\$