

PROJECT REFERENCE NO.	SHEET NO.
U-5606	EC-9/CONST.10
RW SHEET NO.	
ROADWAY DESIGN ENGINEER	HYDRAULICS ENGINEER

CLEARING AND GRUBBING
EROSION CONTROL FOR
CONSTRUCTION SHEET 10

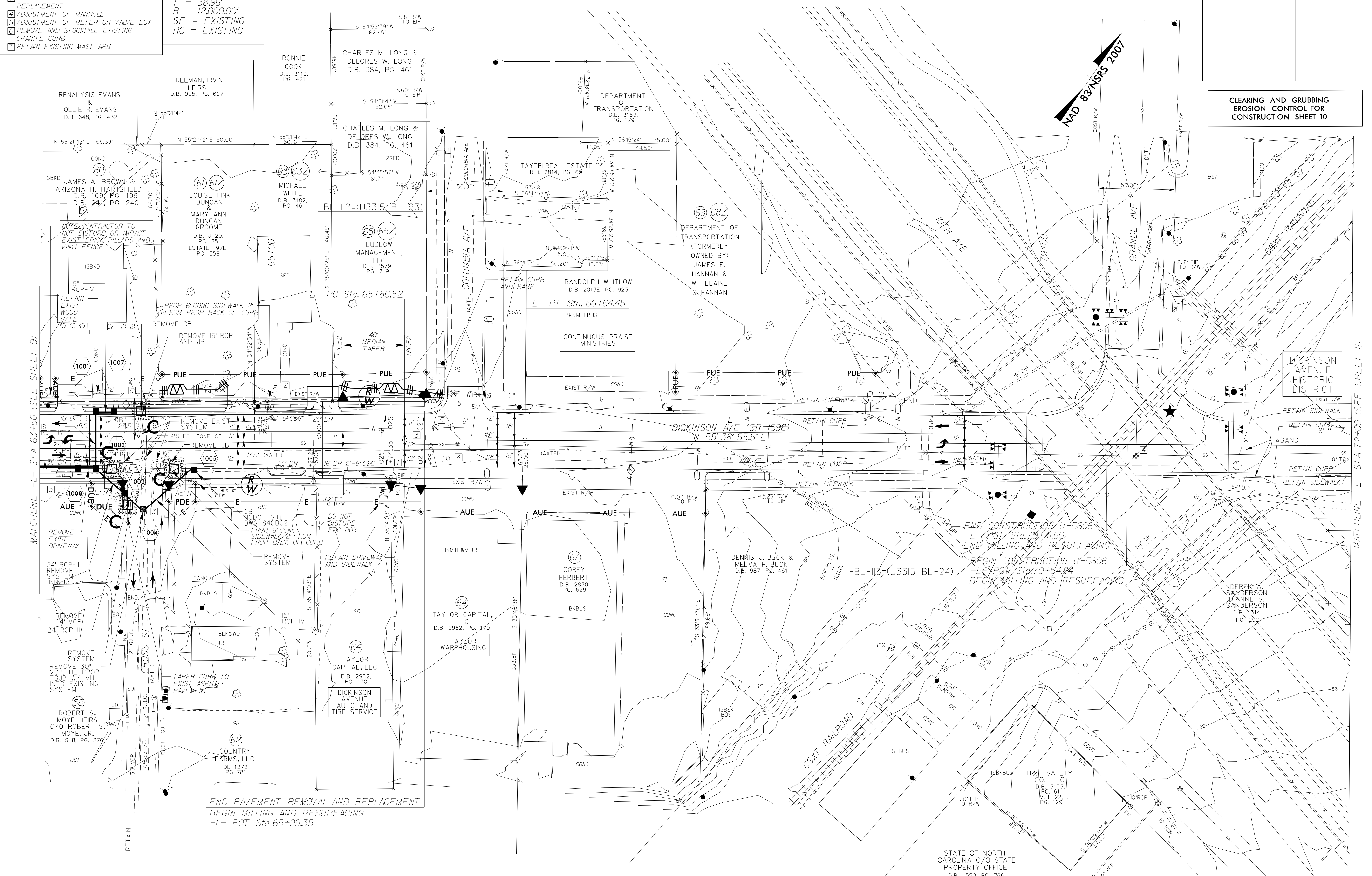
- NOTES:
- TIE TO EXIST CURB AND GUTTER AT EXIST CONCRETE JOINT
 - TRANSITION 2'-6" C&G TO MATCH EXIST GUTTER WIDTH AS NECESSARY
 - TIE TO EXISTING CONCRETE SIDEWALK
 - LIMITS OF PAVEMENT REMOVAL AND REPLACEMENT
 - ADJUSTMENT OF MANHOLE
 - ADJUSTMENT OF METER OR VALVE BOX
 - REMOVE AND STOCKPILE EXISTING GRANITE CURB
 - RETAIN EXISTING MAST ARM

-L-
PI Sta. 66+25.48
 $\Delta = 0' 22' 19.5" (RT)$
 $D = 0' 28' 38.9"$
 $L = 77.93'$
 $T = 38.96'$
 $R = 12,000.00'$
SE = EXISTING
RO = EXISTING

UTILIZE FABRIC INLET PROTECTION
IN LIEU OF TYPE C INLET PROTECTION
WHERE WATER MAY POND ON
ROADWAY USED BY PUBLIC TRAFFIC

NOTE:
PLACE TEMPORARY ROCK SEDIMENT DAMS TYPE - B
AND TEMPORARY ROCK SILT CHECKS TYPE - A AT
DRAINAGE OUTLETS.

REVISIONS



MATCHLINE -L- STA 63+50 (SEE SHEET 9)

MATCHLINE -L- STA 72+00 (SEE SHEET 11)

END PAVEMENT REMOVAL AND REPLACEMENT
BEGIN MILLING AND RESURFACING
-L- POT Sta. 65+99.35

END CONSTRUCTION U-5606
-L- POT Sta. 70+1.60
END MILLING AND RESURFACING
BEGIN CONSTRUCTION U-5606
-L- POT Sta. 70+54.84
BEGIN MILLING AND RESURFACING

STATE OF NORTH CAROLINA C/O STATE PROPERTY OFFICE
D.B. 1550, PG. 766

★ TRAFFIC SIGNAL
SEE SHEET 16 FOR -L- PROFILE