

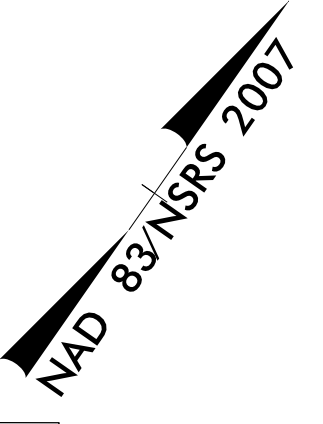
| | |
|-------------------------|---------------------|
| PROJECT REFERENCE NO. | SHEET NO. |
| U-5606 | EC-6/CONST.7 |
| RW SHEET NO. | |
| ROADWAY DESIGN ENGINEER | HYDRAULICS ENGINEER |

- NOTES:
- TIE TO EXIST CURB AND GUTTER AT EXIST CONCRETE JOINT. TRANSITION 2'-6" C&G TO MATCH EXIST GUTTER WIDTH AS NECESSARY.
 - TIE TO EXISTING CONCRETE SIDEWALK.
 - LIMITS OF PAVEMENT REMOVAL AND REPLACEMENT.
 - ADJUSTMENT OF MANHOLE.
 - ADJUSTMENT OF METER OR VALVE BOX.
 - REMOVE AND STOCKPILE EXISTING GRANITE CURB.
 - RETAIN EXISTING MAST ARM.

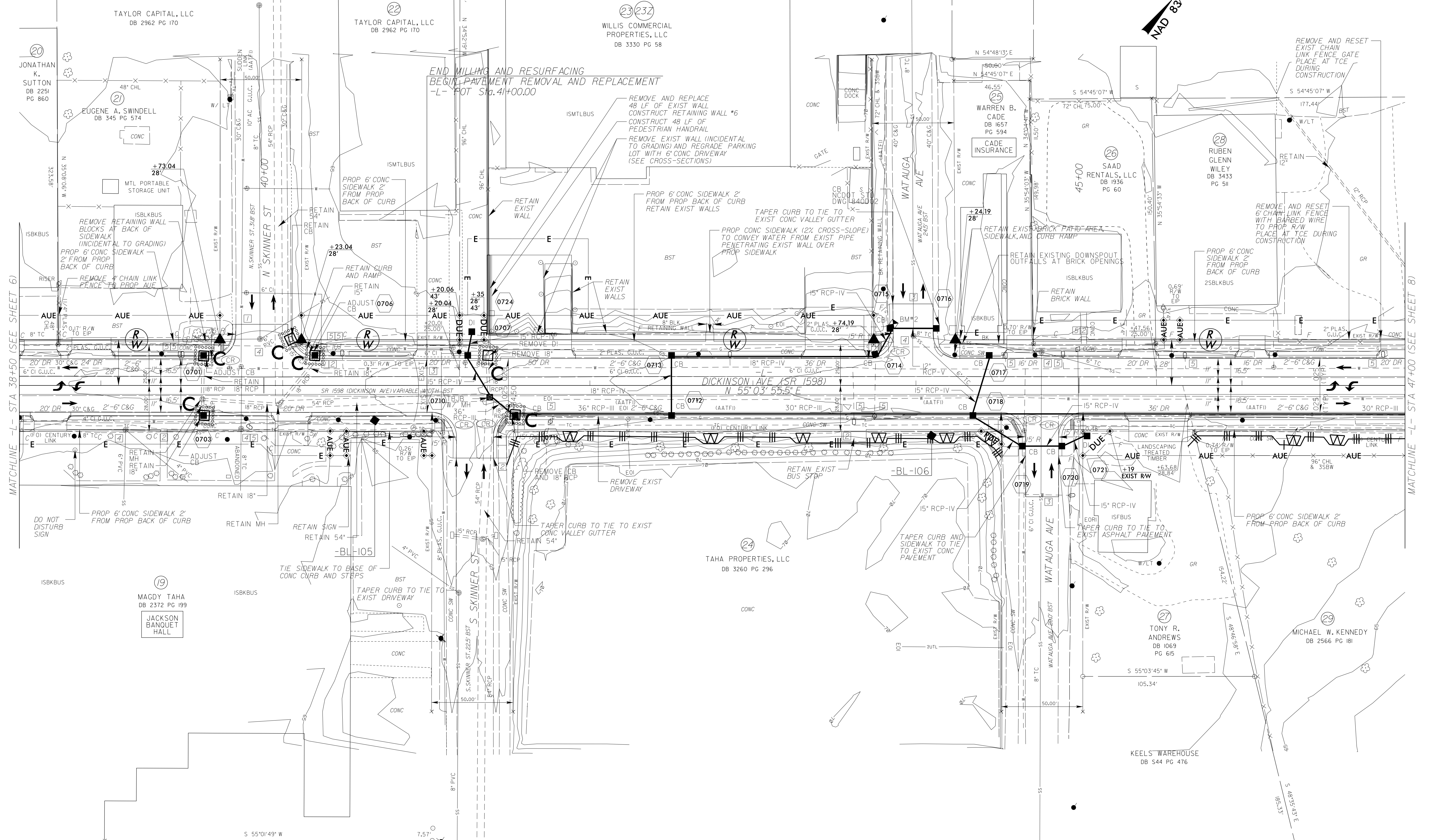
NOTE: PLACE TEMPORARY ROCK SEDIMENT DAMS TYPE - B AND TEMPORARY ROCK SILT CHECKS TYPE - A AT DRAINAGE OUTLETS.

CLEARING AND GRUBBING EROSION CONTROL FOR CONSTRUCTION SHEET 7

UTILIZE FABRIC INLET PROTECTION IN LIEU OF TYPE C INLET PROTECTION WHERE WATER MAY POND ON ROADWAY USED BY PUBLIC TRAFFIC



REVISIONS



MATCHLINE -L- STA 38+50 (SEE SHEET 6)

MATCHLINE -L- STA 47+00 (SEE SHEET 8)

\$FILE\$
\$DATE\$

NOTE: CONTRAC TO BE T... AREAS T

SEE SHEET 14 FOR -L- PROFILE
SEE SHEET W-5 FOR RETAINING WALL #6 PROFILE