

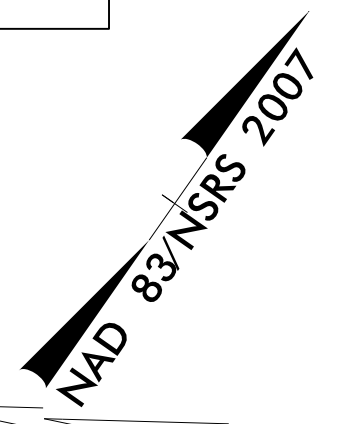
PROJECT REFERENCE NO.	SHEET NO.
U-5606	EC-5/CONST.6
R/W SHEET NO.	
ROADWAY DESIGN ENGINEER	HYDRAULICS ENGINEER

- NOTES:
- 1 TIE TO EXIST CURB AND GUTTER AT EXIST CONCRETE JOINT
  - 2 TIE TO EXISTING CONCRETE SIDEWALK LIMITS OF PAVEMENT REMOVAL AND REPLACEMENT
  - 3 ADJUSTMENT OF MANHOLE
  - 4 ADJUSTMENT OF METER OR VALVE BOX
  - 5 REMOVE AND STOCKPILE EXISTING GRANITE CURB
  - 6 RETAIN EXISTING MAST ARM
  - 7 REMOVE EXIST BOX CULVERT AND REPLACE WITH 18" RCP - IV

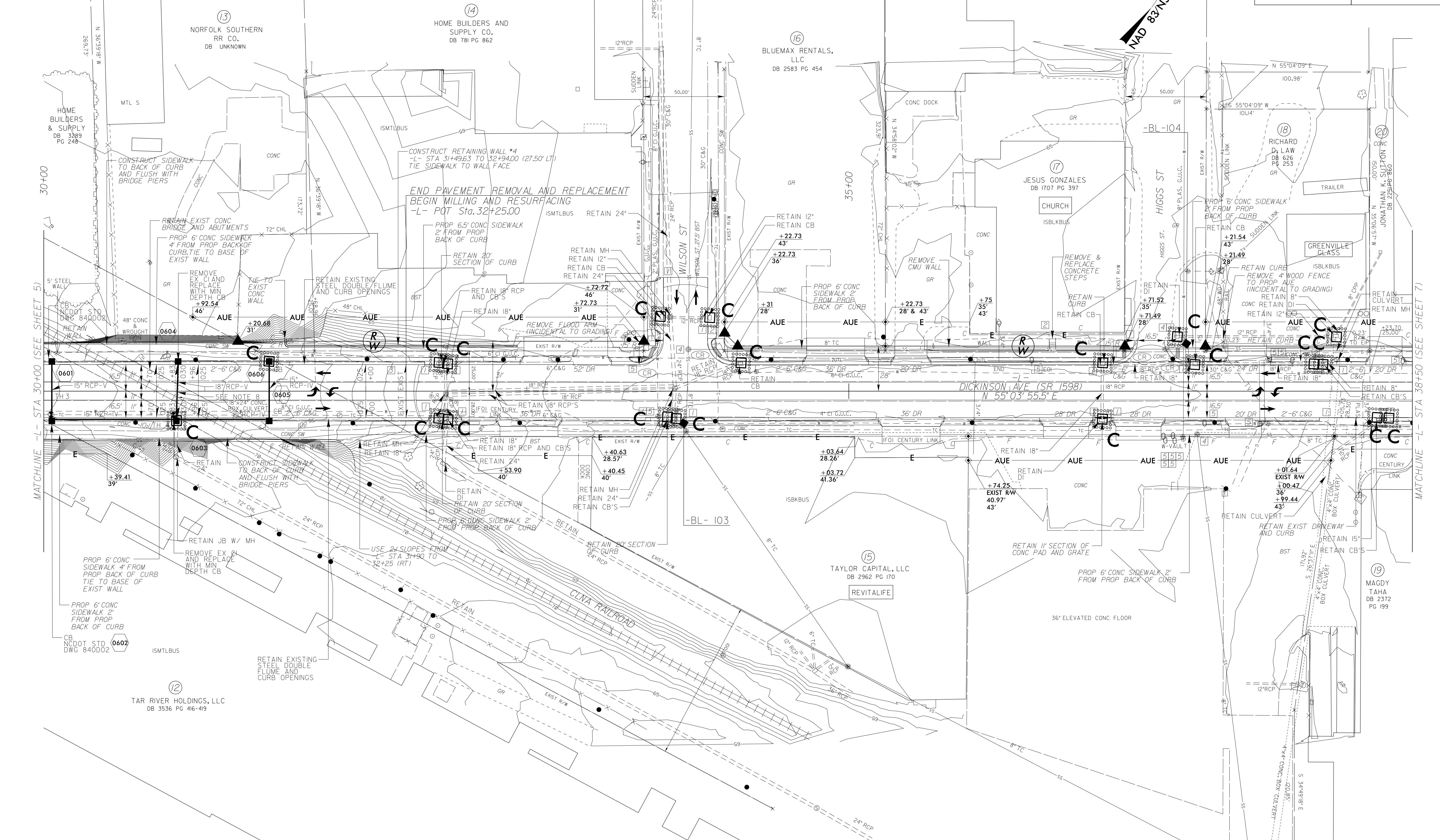
UTILIZE FABRIC INLET PROTECTION IN LIEU OF TYPE C INLET PROTECTION WHERE WATER MAY POND ON ROADWAY USED BY PUBLIC TRAFFIC

NOTE: PLACE TEMPORARY ROCK SEDIMENT DAMS TYPE - B AND TEMPORARY ROCK SILT CHECKS TYPE - A AT DRAINAGE OUTLETS.

CLEARING AND GRUBBING EROSION CONTROL FOR CONSTRUCTION SHEET 6



REVISIONS



MATCHLINE -L- STA 30+00 (SEE SHEET 5)

MATCHLINE -L- STA 38+50 (SEE SHEET 7)

\$ FILE \$

\$ DATE \$

SEE SHEET 14 FOR -L- PROFILE  
SEE SHEET W-4 FOR RETAINING WALL #4 PROFILE