

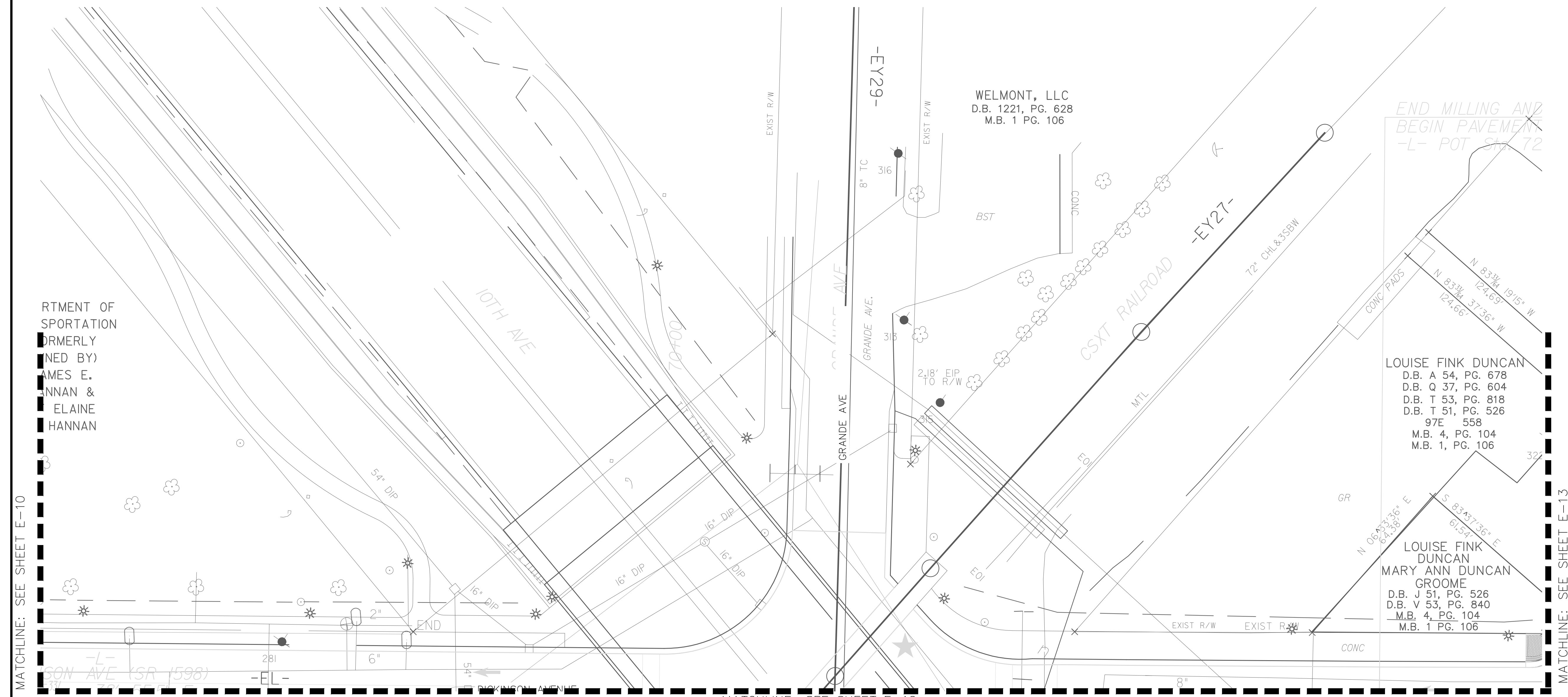
Kimley»Horn
 ©2018
 421 FAYETTEVILLE STREET, SUITE 600
 RALEIGH, NC 27601

PROJECT REFERENCE NO. U-5606	SHEET NO. E-11
SHEET TITLE: STREET LIGHTING PLAN	

DocuSigned by:
 Don S. Chambers
 271072022

SEAL
 027615
 NORTH CAROLINA PROFESSIONAL ENGINEER
 DON S. CHAMBERS

**DOCUMENT NOT CONSIDERED FINAL
 UNLESS ALL SIGNATURES COMPLETED**



DEPARTMENT OF TRANSPORTATION
 FORMERLY
 DESIGNED BY
 JAMES E. HANNAN &
 ELAINE HANNAN

WELMONT, LLC
 D.B. 1221, PG. 628
 M.B. 1 PG. 106

END MILLING AND
 BEGIN PAVEMENT
 -L- POT 51.72

LOUISE FINK DUNCAN
 D.B. A 54, PG. 678
 D.B. Q 37, PG. 604
 D.B. T 53, PG. 818
 D.B. T 51, PG. 526
 97E 558
 M.B. 4, PG. 104
 M.B. 1, PG. 106

LOUISE FINK DUNCAN
 MARY ANN DUNCAN
 GROOME
 D.B. J 51, PG. 526
 D.B. V 53, PG. 840
 M.B. 4, PG. 104
 M.B. 1 PG. 106

MATCHLINE: SEE SHEET E-10

MATCHLINE: SEE SHEET E-12

MATCHLINE: SEE SHEET E-13

SHEET NOTES:
 ALL EXISTING FIXTURES THIS SHEET TO REMAIN.

LIGHTING LEGEND

- | | | | |
|--|--|--|--|
| | 110W GUC LED COBRA HEAD FIXTURE | | ELECTRICAL CONDUIT (2" UNLESS OTHERWISE NOTED) |
| | 100W GUC BLACK DECORATIVE POLE W/LED LANTERN FIXTURE | | ELECTRICAL SERVICE ASSEMBLY |
| | 18" x 24" x 18" TYPE PC JUNCTION BOX | | DUPLEX RECEPTACLE |
| | LIGHT FIXTURE, JUNCTION BOX ID | | |

GENERAL NOTES:

- THE STANDARD SPECIFICATIONS FOR ROADS AND STRUCTURES DATED JANUARY 2018 OF THE STATE OF NORTH CAROLINA DEPARTMENT OF TRANSPORTATION AND SUPPLEMENTAL SPECIFICATIONS LISTED IN THE BID DOCUMENTS SHALL GOVERN THIS IMPROVEMENT. CONDUIT PATHS ARE SCHEMATIC IN NATURE. CONTRACTOR SHALL ROUTE UNDERGROUND RACEWAYS BEHIND CURB AND TO AVOID CONFLICTS WITH EXISTING AND/OR PROPOSED VALVES, METERS, CATCH BASINS, STREET TREES, ETC. CONTRACTOR TO MINIMIZE DISTURBANCE TO ROADWAY DURING INSTALLATION OF RACEWAYS WHEN NOT CROSSING DRIVES.
- CONTRACTOR IS RESPONSIBLE FOR REPAIRING OR REPLACING TO THE SATISFACTION OF THE ENGINEER. ALL DAMAGE TO CURBS, UNDERDRAINS, DRIVES, BUILDINGS, ETC. CAUSED BY THE INSTALLATION OF NEW WORK.
- CONTRACTOR TO STUB CONDUIT UP APPROXIMATELY 3' IN FRONT OR BACK OF THE LIGHT POLE LOCATIONS TO PROVIDE ADEQUATE SPACE FOR JUNCTION BOXES. LIGHT FIXTURES TO BE INSTALLED BY GREENVILLE UTILITIES (GUC) AT A LATER DATE.
- UNDERGROUND CONDUITS ARE 2" PVC CONDUIT. INSTALL PULL LINE INSIDE CONDUIT.
- JUNCTION BOXES ARE 18" (W) x 24" (L) x 18" (D).
- LIGHTING LAYOUT SHOWN ASSUMES UTILITY RELOCATION COMPLETE.

