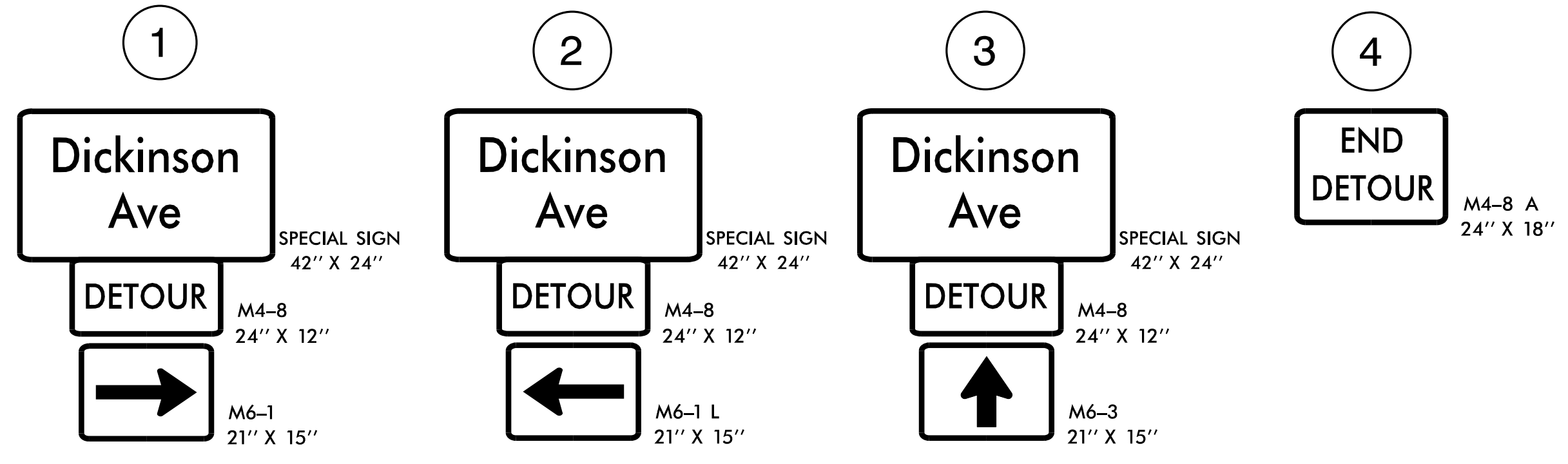
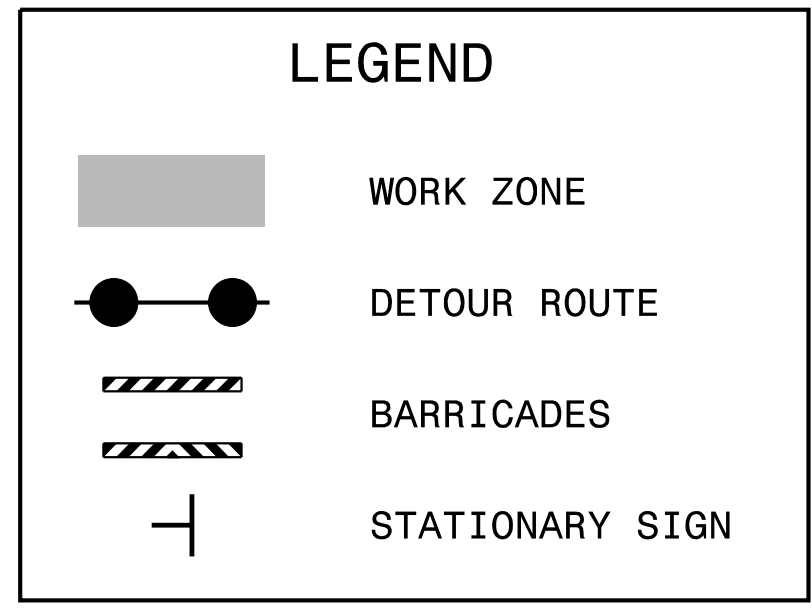
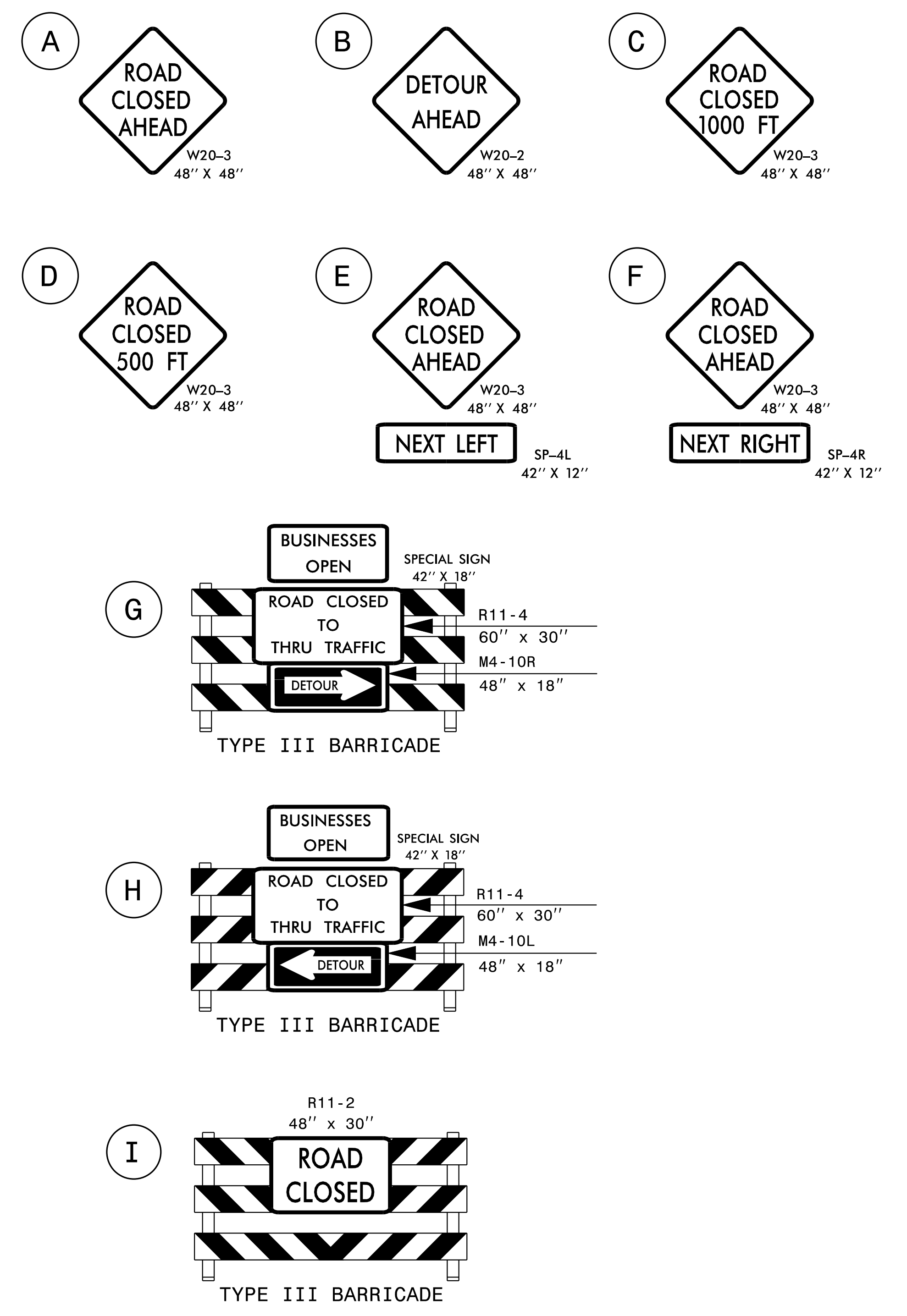


DETOUR ROUTE USED DURING CONSTRUCTION OF SECTION 5B

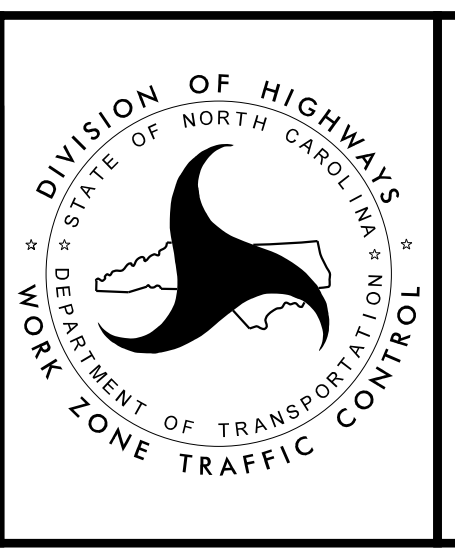
\* NOTE: REFER TO SHEET TMP-4, INSET A, FOR WESTBOUND DICKINSON AVE DETOUR ROUTE AND ASSOCIATED SIGNAGE PLACEMENT



K:\RAL\_Roadway\01036243 - U-5606 Dickinson Avenue\TrafficControl\TCPU-5606\_TC\_TMP\_13\_DefSec5B.dgn 1/17/2022

Kimley»Horn

APPROVED: *Evan Parrot*  
 DATE: 1/17/2022  
 SEAL



SECTION 5B  
DETOUR

DOCUMENT NOT CONSIDERED FINAL UNLESS ALL SIGNATURES COMPLETED