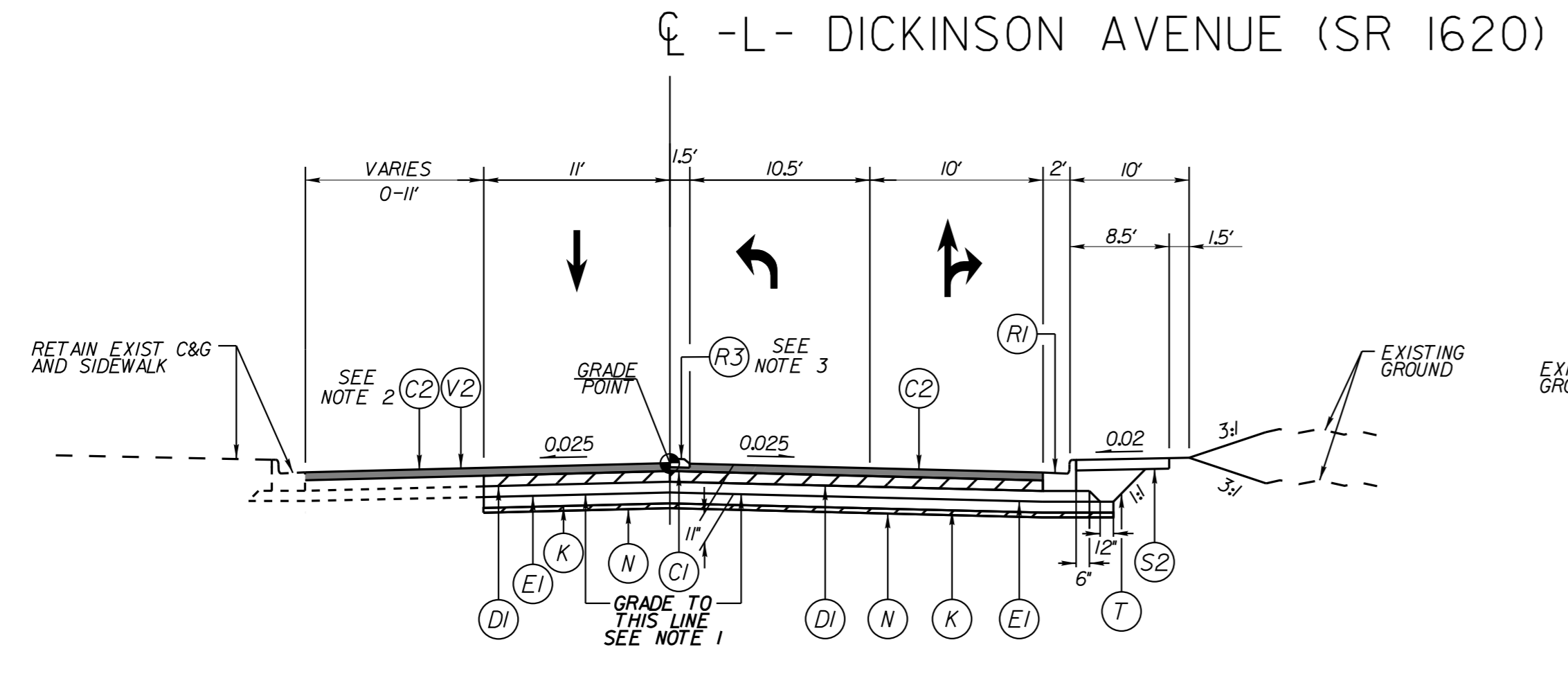




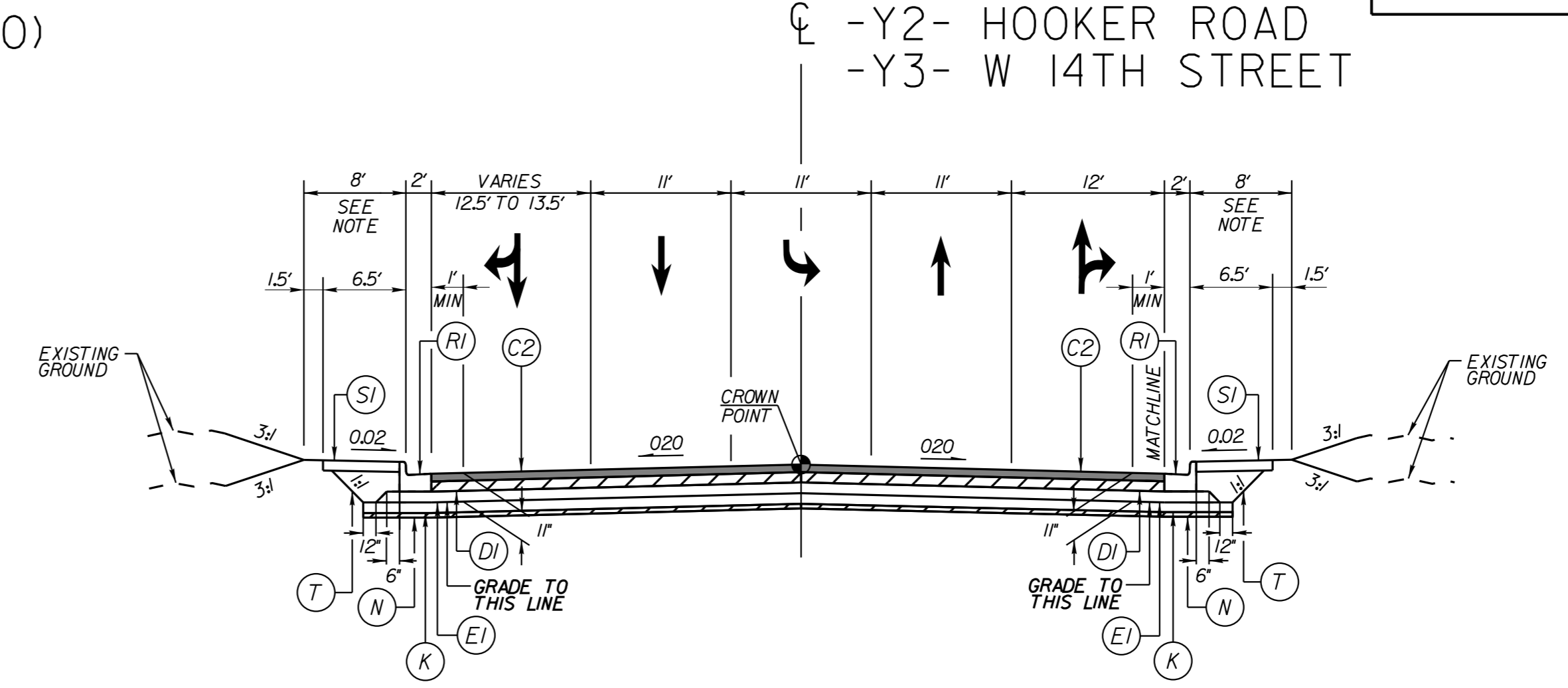
**DOCUMENT NOT CONSIDERED FINAL
UNLESS ALL SIGNATURES COMPLETED**



TYPICAL SECTION NO. 8

-L- STA 85+21.72 TO STA 88+35.00

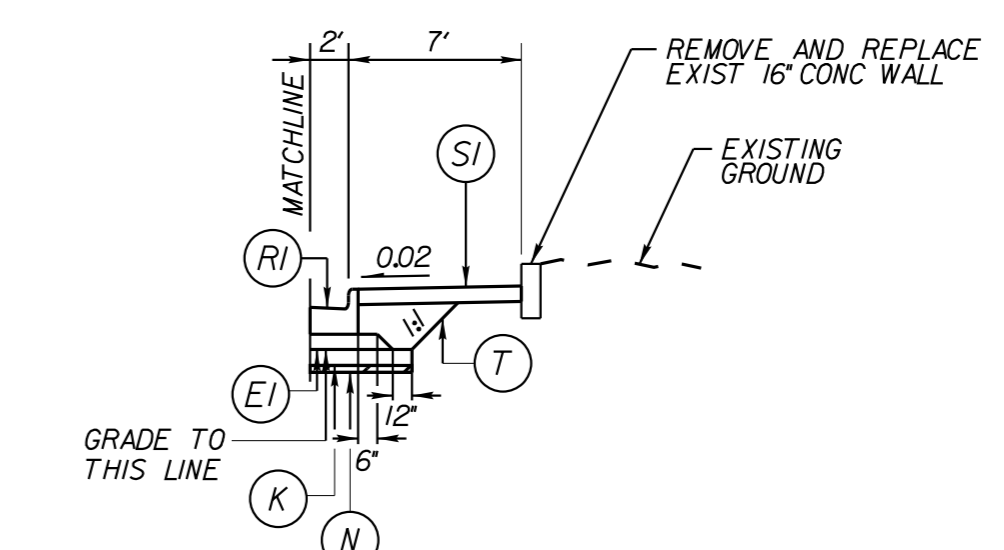
- NOTES:
 1. REMOVE EXIST ASPHALT AND CONCRETE PAVEMENT TO SUBGRADE
 2. MILL AND RESURFACE EXIST ASPHALT PAVEMENT (3") FROM -L- STA 87+30.37 TO 88+25.00 (LT)
 3. PROPOSED CONCRETE ISLAND FROM -L- STA 85+58.81 TO 86+43.81 (RT)



TYPICAL SECTION NO. 9

-Y2- STA 10+80.00 TO STA 11+23.00
 -Y2- STA 12+15.00 TO STA 13+41.00
 -Y3- STA 11+34.00 TO STA 11+83.50
 -Y3- STA 12+16.50 TO STA 12+82.00

- NOTES:
 1. REMOVE EXIST ASPHALT AND CONCRETE PAVEMENT TO SUBGRADE
 2. RETAIN EXIST SIDEWALK AND 2'-6" CURB AND GUTTER FROM -Y2- STA 12+81.00 TO 13+41.00 AND FROM -Y3- STA 12+67.00 TO 12+82.00



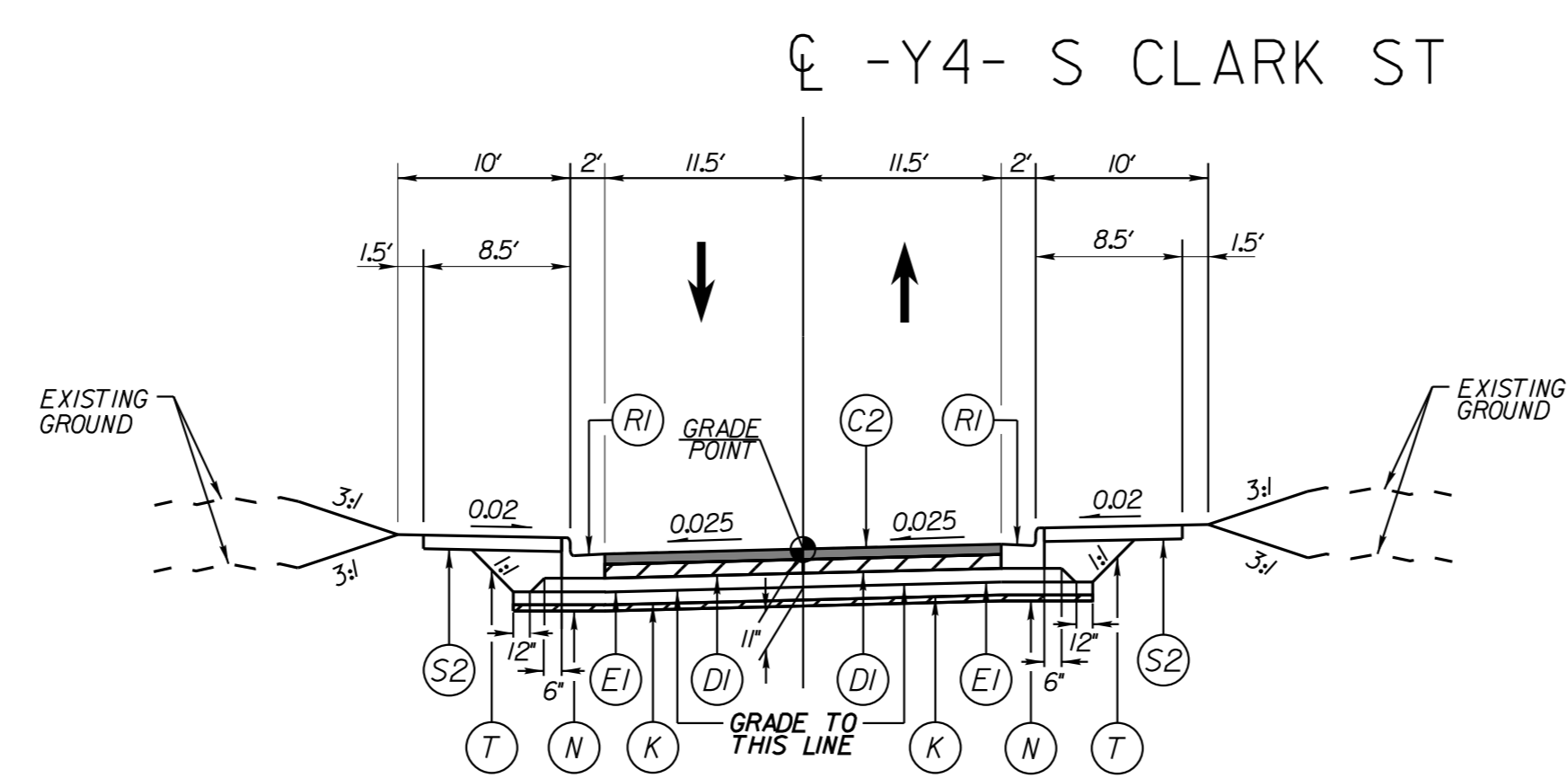
TYPICAL SECTION NO. 9A

-Y3- STA 12+36.07 TO STA 12+67.01 (RT)

PAVEMENT SCHEDULE
(FINAL PAVEMENT DESIGN)

C1	1.5" S9.5B
C2	3" S9.5B
D1	4" I19.0C
E1	4" B25.0C
K	12" CLASS IV SUBGRADE STABILIZATION
N	GEOTEXTILE FOR SOIL STABILIZATION, TYPE 4
R1	2'-6" CONCRETE CURB & GUTTER
R2	8' x 18" CONCRETE CURB
R3	5' MONOLITHIC CONCRETE ISLAND (KEYED-IN)
S1	4" CONCRETE SIDEWALK
S2	CONCRETE/BRICK PAVER SIDEWALK
T	EARTH MATERIAL
U	EXISTING PAVEMENT
V1	MILLING ASPHALT PAVEMENT, 1.5' DEPTH
V2	MILLING ASPHALT PAVEMENT, 3" DEPTH
V3	INCIDENTAL MILLING

PAVEMENT EDGE SLOPES ARE 1:1 UNLESS OTHERWISE NOTED



TYPICAL SECTION NO. 10

-Y4- STA 11+00.00 TO STA 12+12.31
 REMOVE EXIST ASPHALT AND CONCRETE PAVEMENT TO SUBGRADE

REVISIONS

K:\RAL_Roadway\01036243 - U-5606 Dickinson Avenue\Roadway\Pro\U5606_rdy_1ty.dgn

1/17/2022