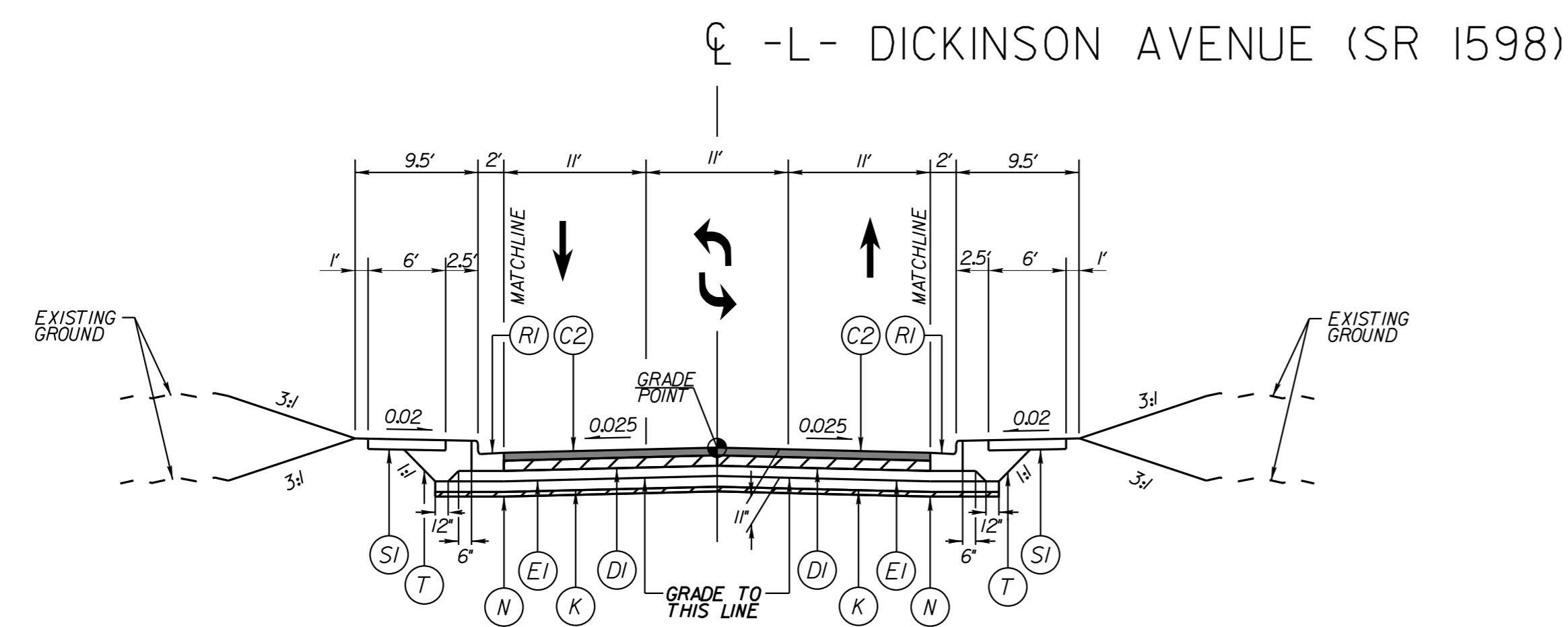


Kimley»Horn
 421 FAYETTEVILLE STREET, SUITE 600
 RALEIGH, NC 27601

PROJECT REFERENCE NO. U-5606	SHEET NO. 2A-2
ROADWAY DESIGN ENGINEER	PAVEMENT DESIGN ENGINEER

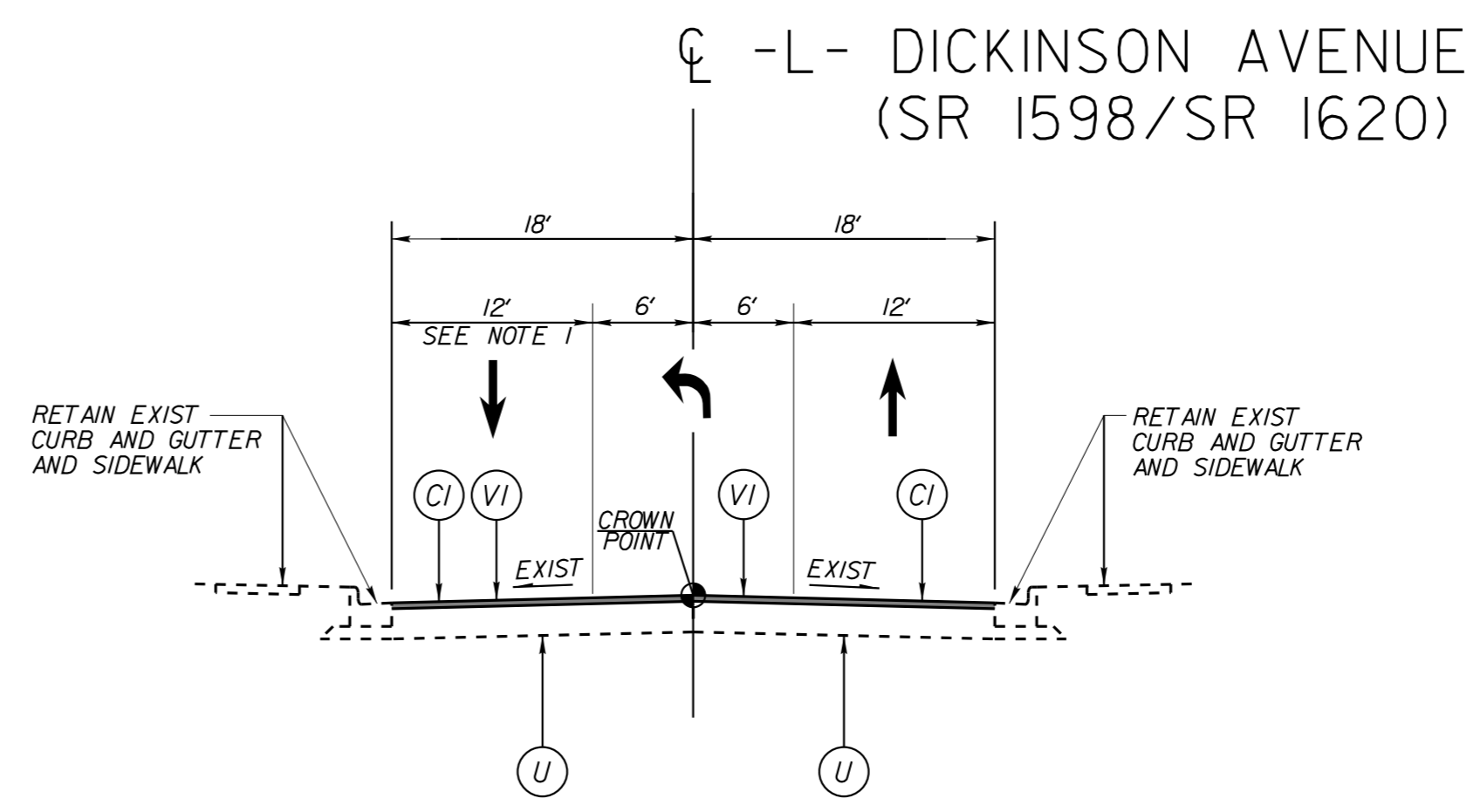
**DOCUMENT NOT CONSIDERED FINAL
UNLESS ALL SIGNATURES COMPLETED**



TYPICAL SECTION NO. 5

-L- STA 27+50.00 TO STA 32+25.00
 -L- STA 41+00.00 TO STA 65+99.35

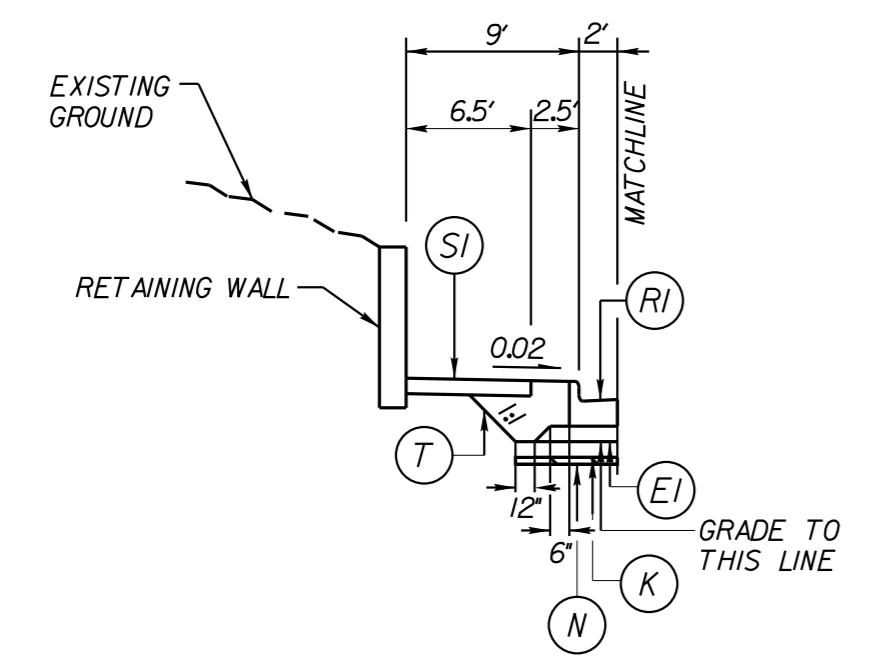
REMOVE EXIST ASPHALT AND CONCRETE PAVEMENT TO SUBGRADE



TYPICAL SECTION NO. 6

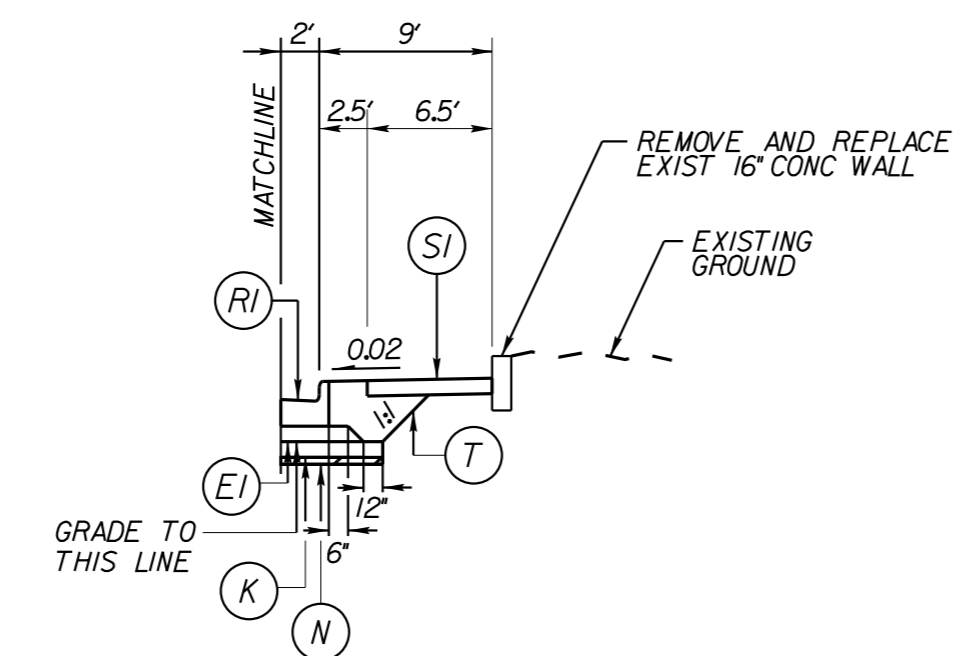
-L- STA 65+99.35 TO STA 70+41.60
 -L- STA 70+54.84 TO STA 72+50.00

NOTES:
 1. LANE WIDTHS VARY THROUGH INTERSECTION FROM
 -L- STA 65+99.35 TO 66+46.58



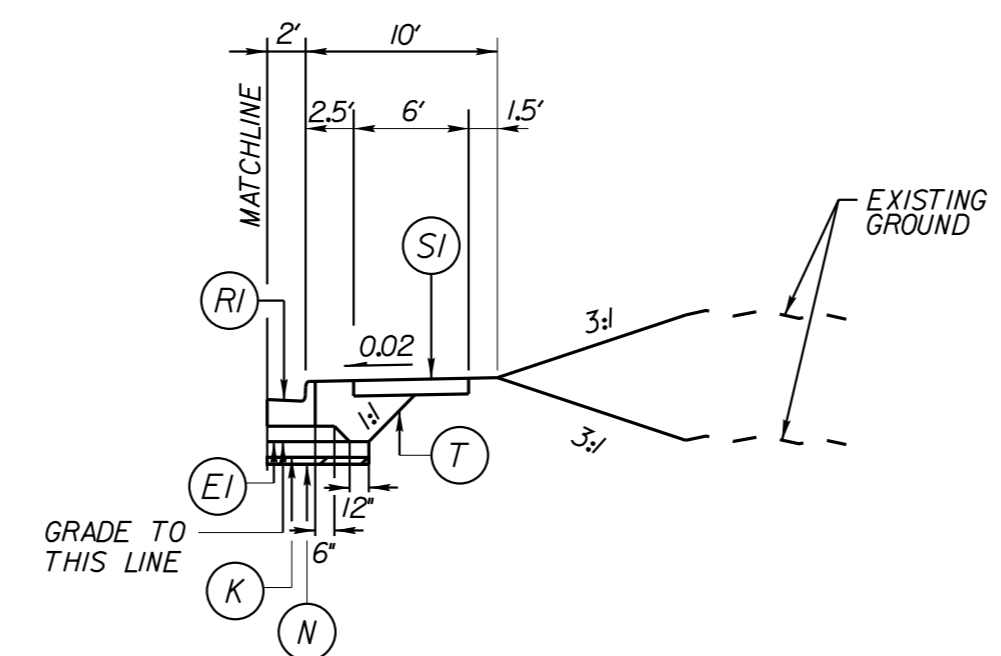
TYPICAL SECTION NO. 5A

-L- STA 28+00.00 TO STA 28+93.65 (RT)
 -L- STA 28+85.00 TO STA 29+64.37 (LT)
 -L- STA 29+00.32 TO STA 29+48.90 (RT)
 -L- STA 31+49.63 TO STA 32+94.00 (LT)



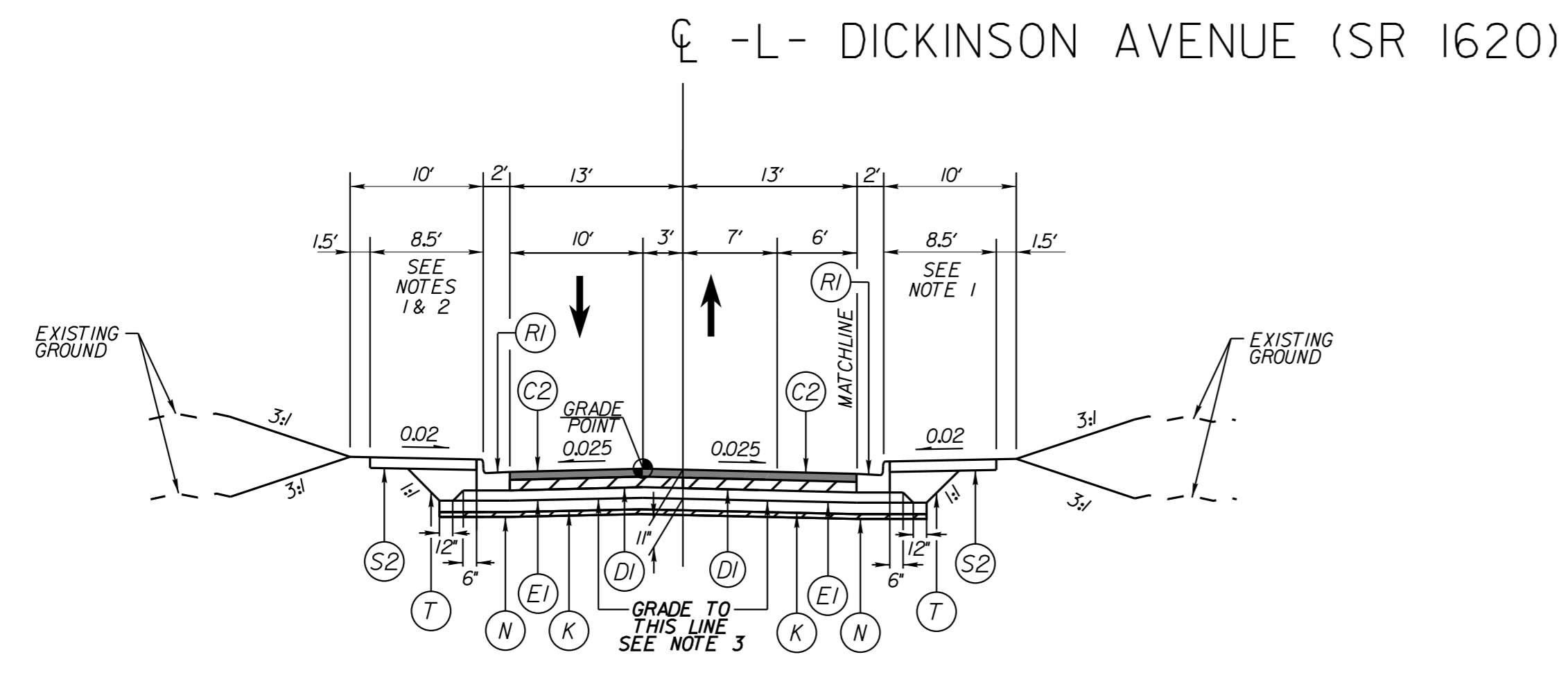
TYPICAL SECTION NO. 5B

-L- STA 57+29.86 TO STA 57+63.94 (RT)



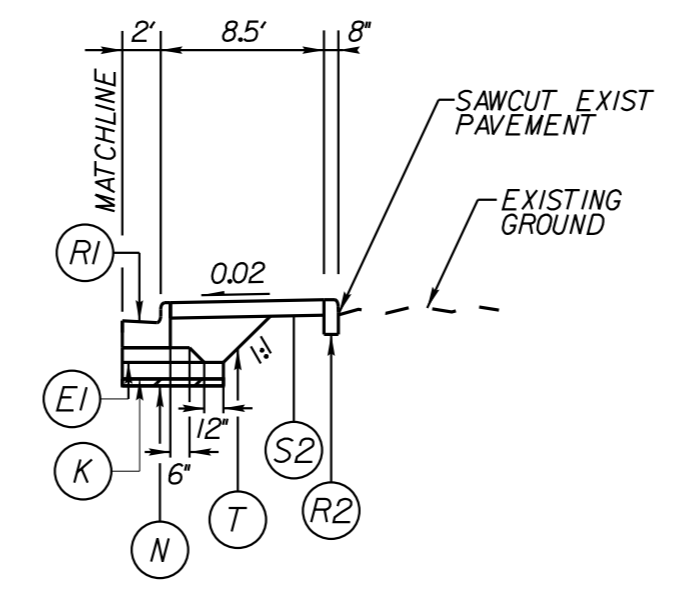
TYPICAL SECTION NO. 5C

-L- STA 59+26.66 TO STA 65+81.15 (RT)
 -L- STA 59+42.63 TO STA 61+93.65 (LT)
 -L- STA 64+87.69 TO STA 65+99.35 (LT)



TYPICAL SECTION NO. 7

-L- STA 72+50.00 TO STA 85+21.72



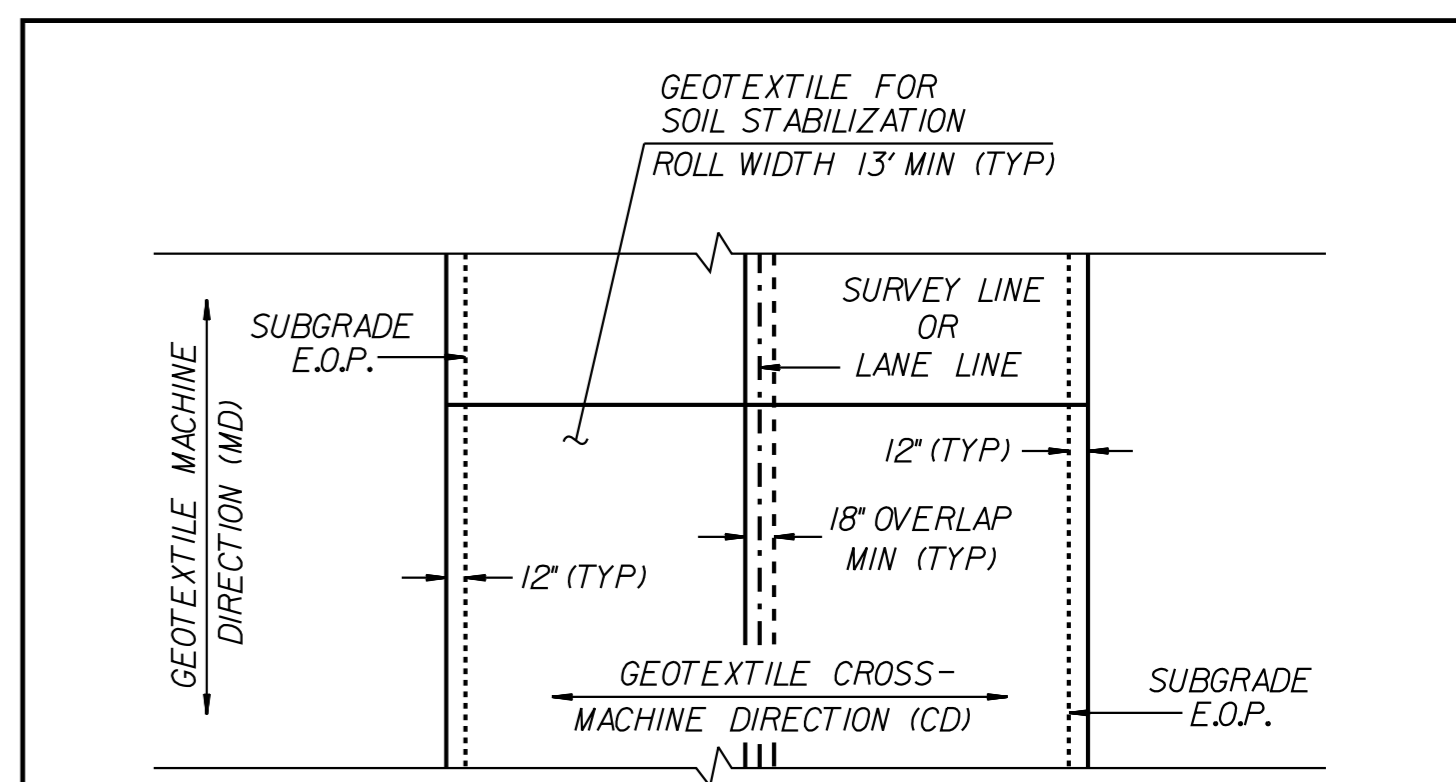
TYPICAL SECTION NO. 7A

-L- STA 81+02.95 TO STA 81+90.00

PAVEMENT SCHEDULE
(FINAL PAVEMENT DESIGN)

C1	1.5' S9.5B
C2	3' S9.5B
DI	4' I19.0C
EI	4' B25.0C
K	12' CLASS IV SUBGRADE STABILIZATION
N	GEOTEXTILE FOR SOIL STABILIZATION, TYPE 4
RI	2'-6" CONCRETE CURB & GUTTER
R2	8' x 18" CONCRETE CURB
R3	5' MONOLITHIC CONCRETE ISLAND (KEYED-IN)
SI	4' CONCRETE SIDEWALK
S2	CONCRETE/BRICK PAVER SIDEWALK
T	EARTH MATERIAL
U	EXISTING PAVEMENT
VI	MILLING ASPHALT PAVEMENT, 1.5' DEPTH
V2	MILLING ASPHALT PAVEMENT, 3' DEPTH
V3	INCIDENTAL MILLING

PAVEMENT EDGE SLOPES ARE 1:1 UNLESS OTHERWISE NOTED



GEOTEXTILE FOR SOIL STABILIZATION PLACEMENT (PLAN VIEW)
 (100% COVERAGE REQUIRED)

NOTES:
 1. SIDEWALK TO EXTEND TO BUILDING FACE WHERE APPLICABLE
 2. RETAIN EXIST CURB AND GUTTER AND SIDEWALK FROM -L- STA 72+50.00 TO 73+01.66 (LT), FROM -L- STA 82+94.45 TO 83+33.64 (RT), AND FROM -L- STA 85+03.62 TO 85+21.72 (LT)
 3. REMOVE EXIST ASPHALT AND CONCRETE PAVEMENT TO SUBGRADE

REVISIONS

K:\RAL_Roadway\01036243 - U-5606 Dickinson Avenue\Roadway\Proj\U5606_rdy_1ty.dgn

1/17/2022