

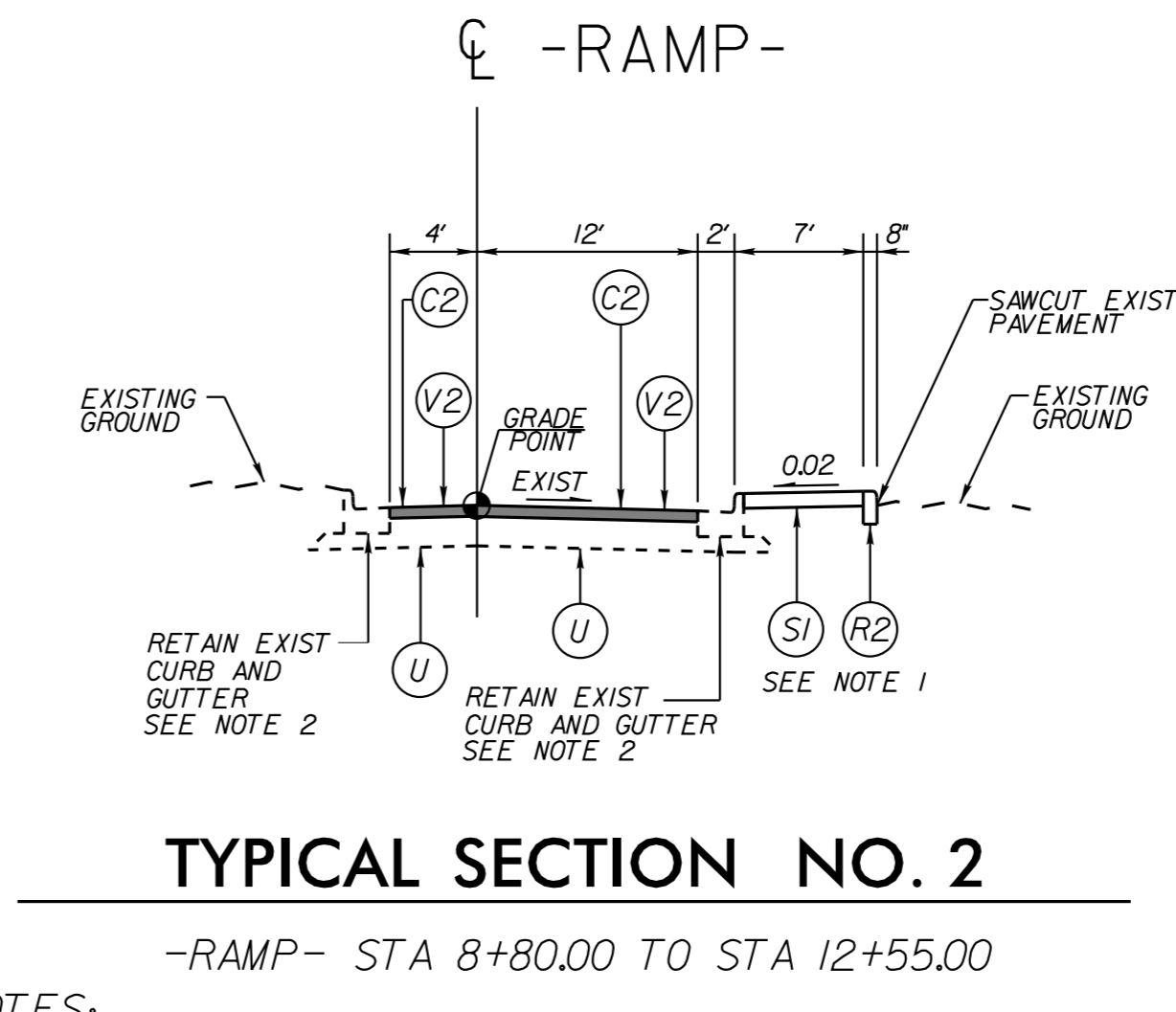
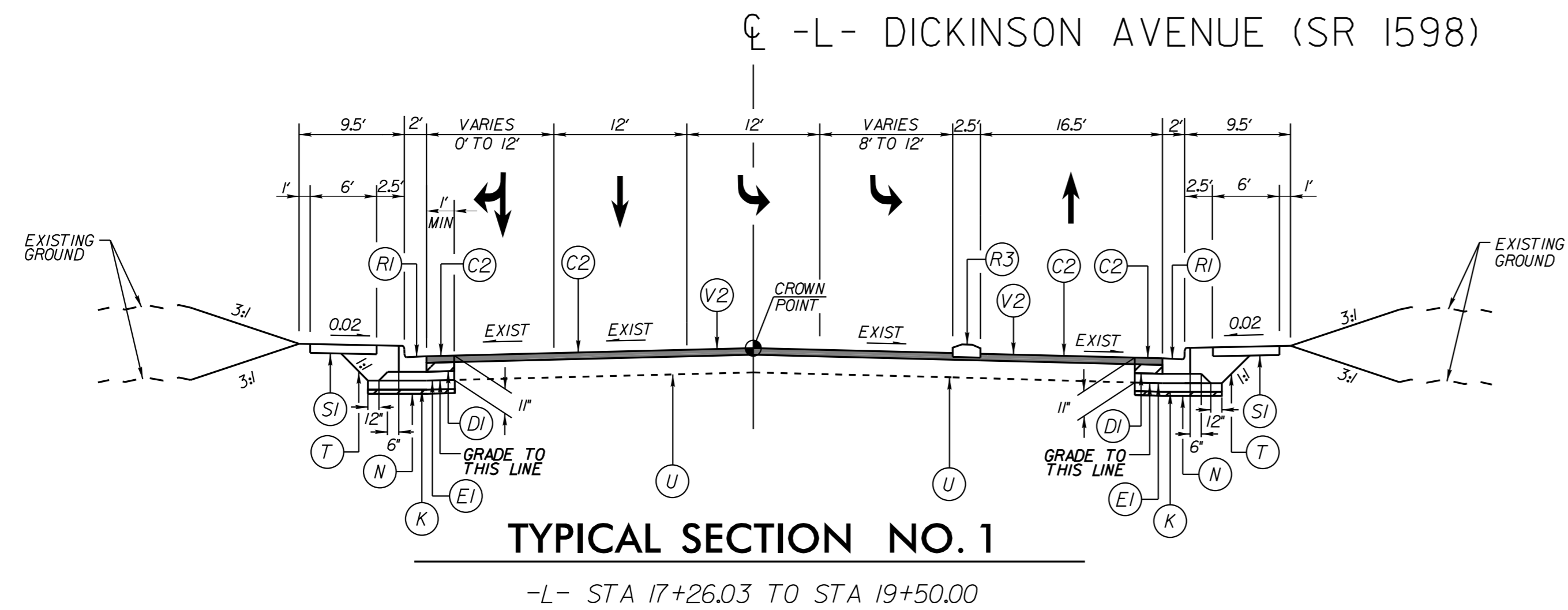
421 FAYETTEVILLE STREET, SUITE 600
RALEIGH, NC 27601

PROJECT REFERENCE NO. U-5606	SHEET NO. 2A-1
ROADWAY DESIGN ENGINEER	PAVEMENT DESIGN ENGINEER

SEAL
024336
1/9/2022
JEFFREY W. MOORE
ENGINEER

SEAL
022896
12/9/2022
CLARK S. MORRISON
ENGINEER

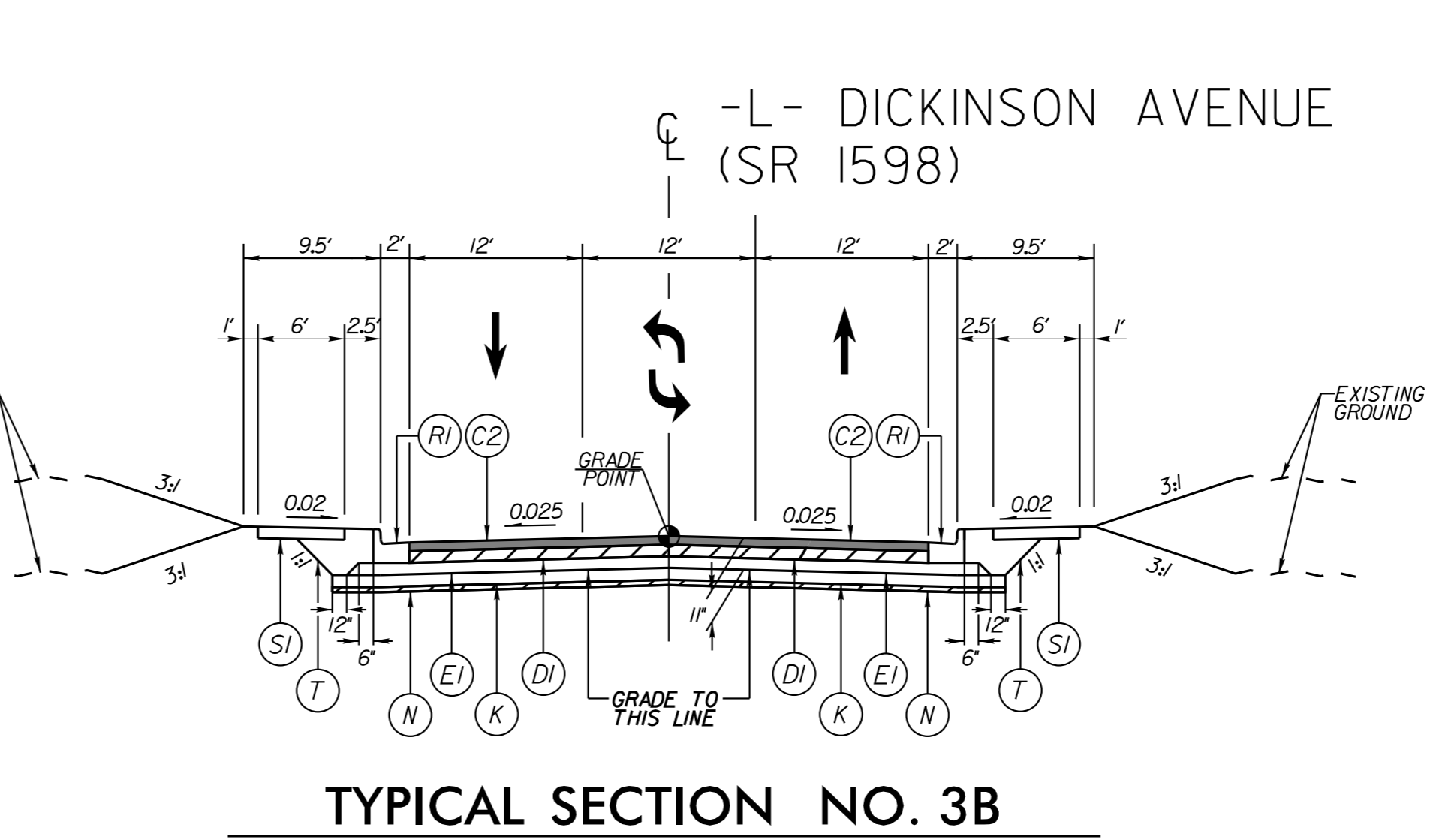
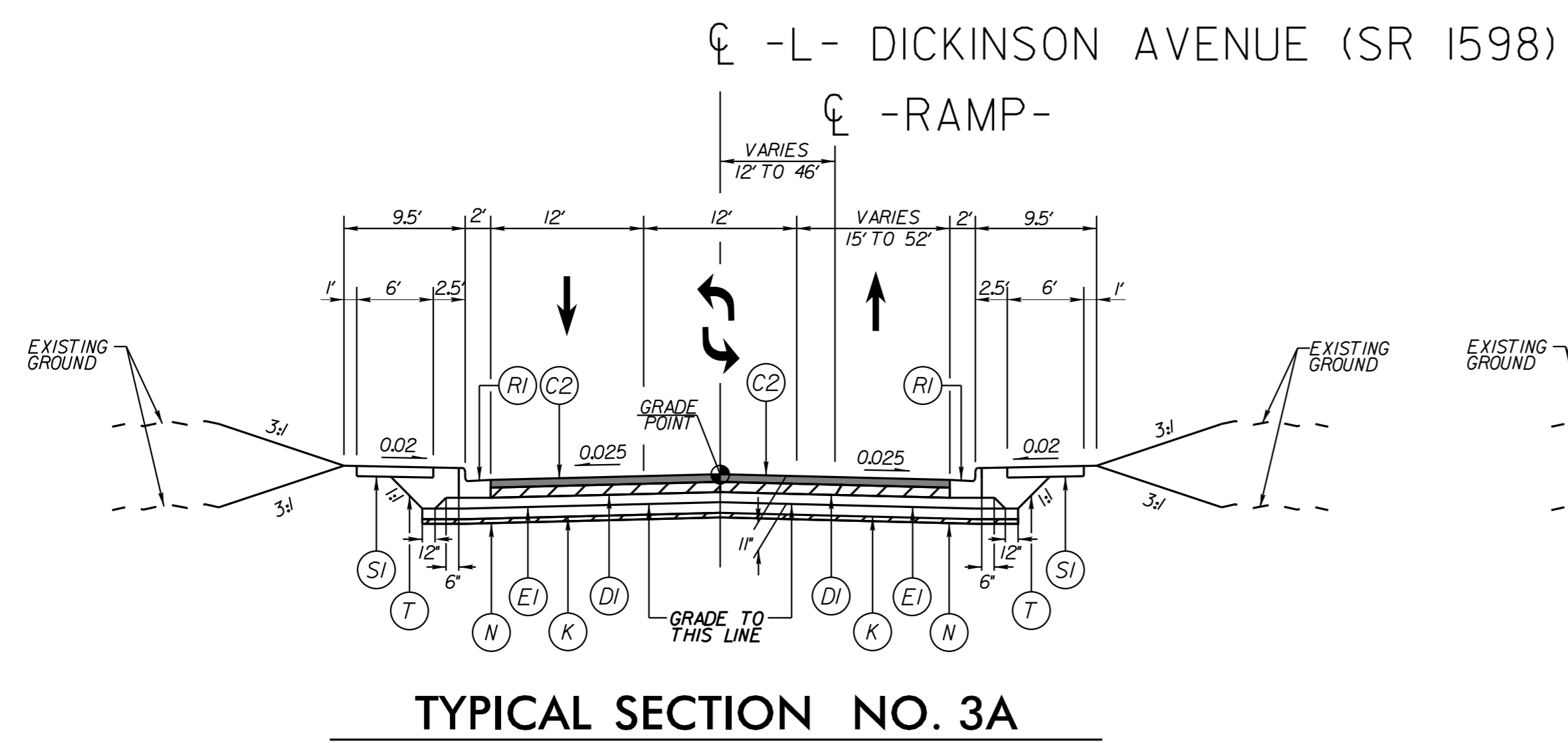
**DOCUMENT NOT CONSIDERED FINAL
UNLESS ALL SIGNATURES COMPLETED**



NOTES:
 1. SIDEWALK AND 8" X 18" CURB ONLY TO BE CONSTRUCTED FROM -RAMP- STA 11+47.00 TO 12+55.00
 2. REPLACE CURB AND GUTTER FOR CURB RAMP FROM -RAMP- STA 11+40.00 TO 11+59.00 LT/RT

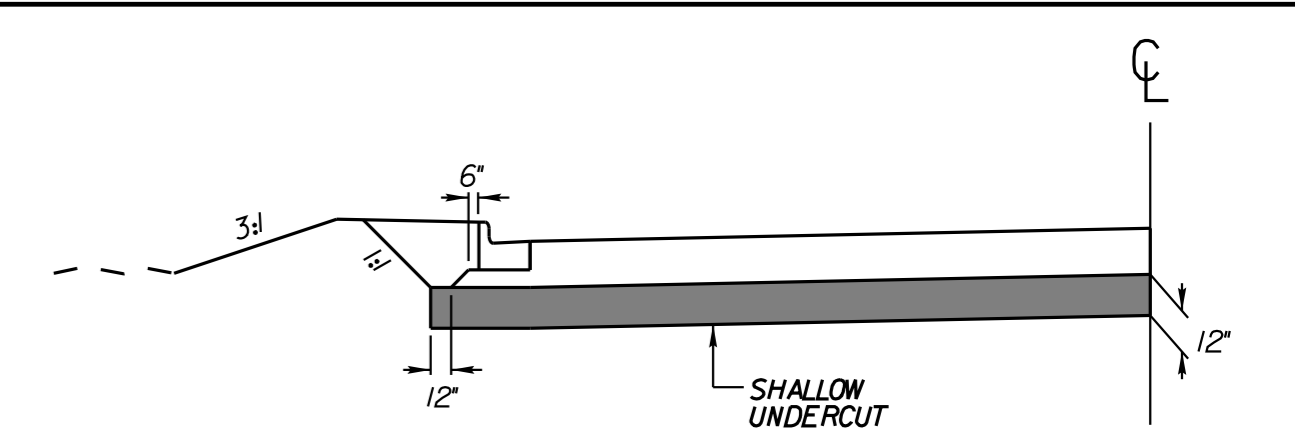
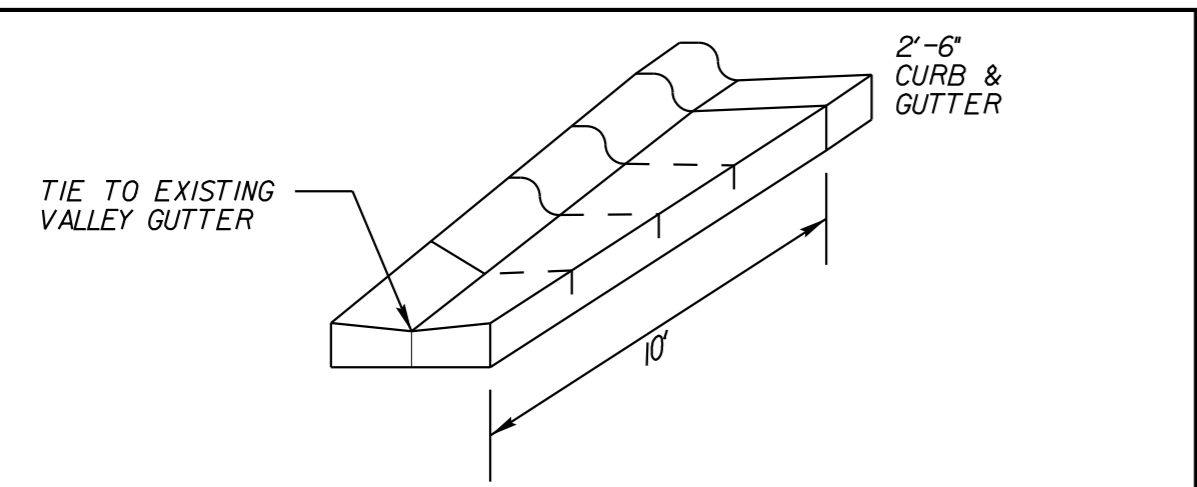
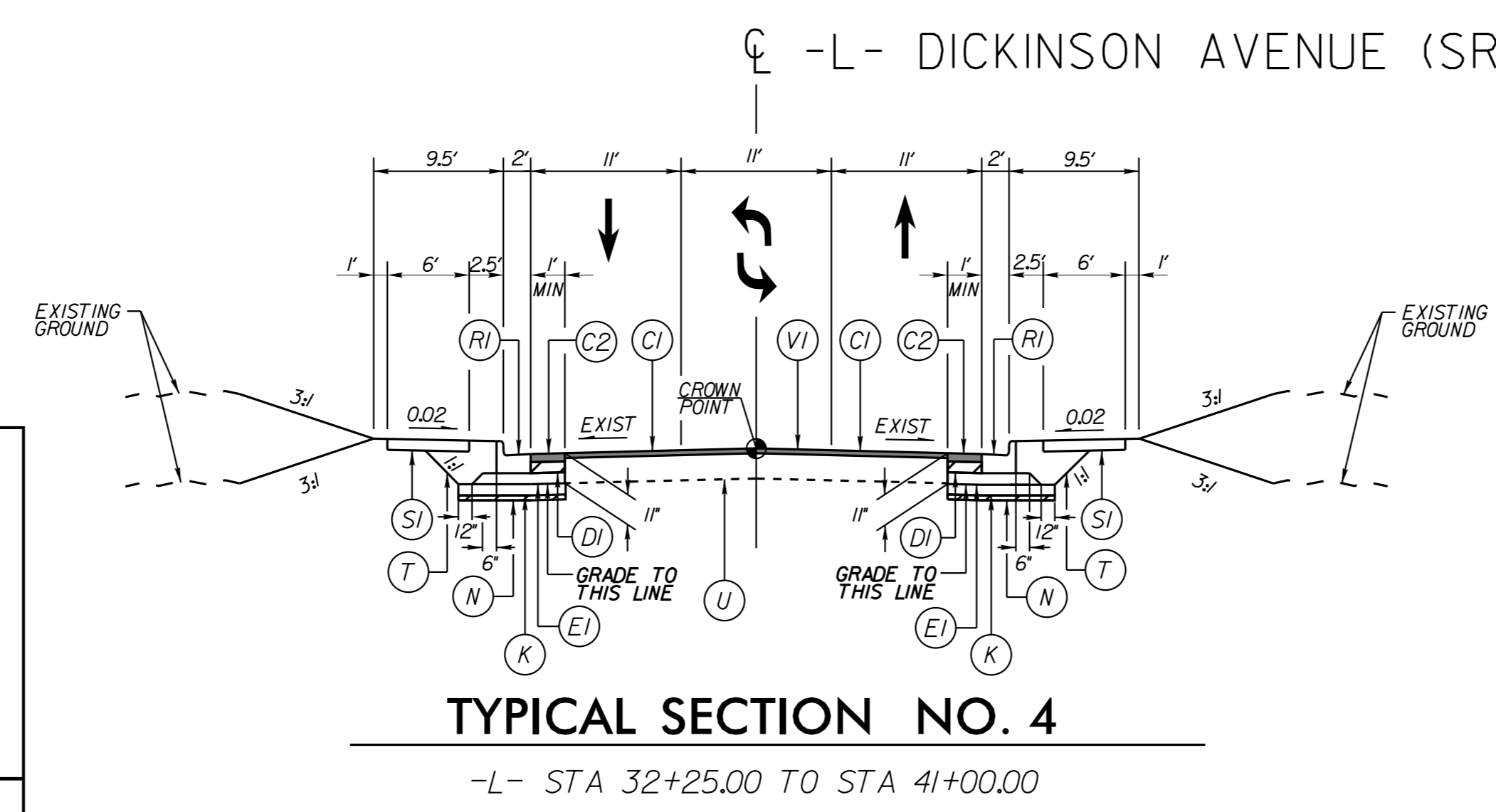
PAVEMENT SCHEDULE (FINAL PAVEMENT DESIGN)	
C1	PROPOSED APPROX 1.5" ASPHALT CONCRETE SURFACE COURSE TYPE S9.5B, AT AN AVERAGE RATE OF 165 LBS. PER SQ. YD.
C2	PROPOSED APPROX 3" ASPHALT CONCRETE SURFACE COURSE TYPE S9.5B, AT AN AVERAGE RATE OF 165 LBS. PER SQ. YD. IN EACH OF TWO LAYERS
DI	PROPOSED APPROX. 4" ASPHALT CONCRETE INTERMEDIATE COURSE TYPE I19.0C, AT AN AVERAGE RATE OF 456 LBS. PER SQ. YD.
E1	PROPOSED APPROX. 4" ASPHALT CONCRETE BASE COURSE TYPE B25.0C, AT AN AVERAGE RATE OF 456 LBS. PER SQ. YD.
K	PROPOSED 12" CLASS IV SUBGRADE STABILIZATION
N	GEOTEXTILE FOR SOIL STABILIZATION, TYPE 4
R1	PROPOSED 2'-6" CONCRETE CURB & GUTTER
R2	PROPOSED 8" X 18" CONCRETE CURB
R3	PROPOSED 5" MONOLITHIC CONCRETE ISLAND (KEYED-IN)
S1	PROPOSED 4" CONCRETE SIDEWALK
S2	PROPOSED CONCRETE/BRICK PAVER SIDEWALK
T	EARTH MATERIAL
U	EXISTING PAVEMENT
V1	MILLING ASPHALT PAVEMENT, 1.5" DEPTH
V2	MILLING ASPHALT PAVEMENT, 3" DEPTH
V3	INCIDENTAL MILLING (SEE DETAIL, THIS SHEET)

PAVEMENT EDGE SLOPES ARE 1:1 UNLESS OTHERWISE NOTED

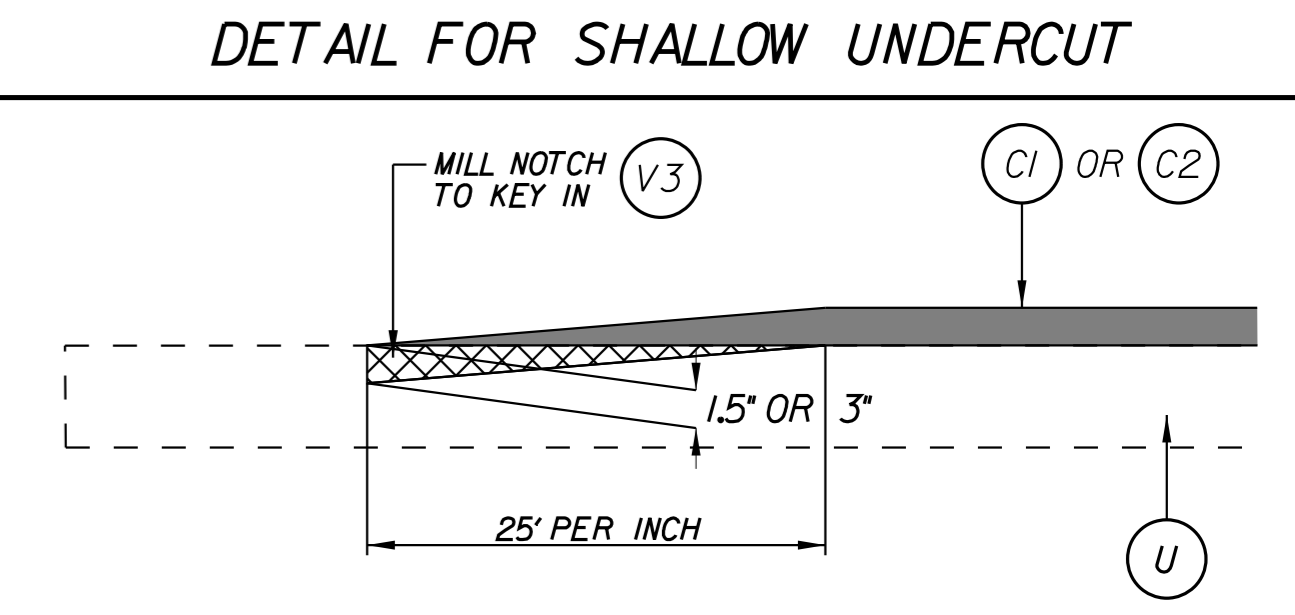


REMOVE EXIST ASPHALT AND CONCRETE PAVEMENT TO SUBGRADE

NOTES:
 1. REMOVE EXIST ASPHALT AND CONCRETE PAVEMENT TO SUBGRADE
 2. LANE WIDTHS VARY THROUGH INTERSECTION FROM -L- STA 26+67.00 TO 27+50.00



USE IN ALL AREAS OF SUBGRADE STABILIZATION



REVISIONS

K:\RAL_Roadway\01036243 - U-5606 Dickinson Avenue\Roadway\Proj\U5606_rdy-ty.dgn

2/9/2022