

15BPR.51

CONTRACT NO.:

STATE OF NORTH CAROLINA  
DEPARTMENT OF TRANSPORTATION

PAVEMENT MARKING PLAN  
GASTON & MECKLENBURG COUNTIES

LOCATION: BRIDGE #46 - US 29 SOUTH /US 74 WEST OVER I-85 NB  
BRIDGE #66 - NC 27 OVER THE CATAWBA RIVER  
BRIDGE #86 - US 74 EAST OVER I-85 NB  
BRIDGE #314 - US 29 SOUTH /US 74 WEST OVER I-85 SB  
TYPE OF WORK: PAVING, AND STRUCTURES

TIP NO. 15BPR.51 SHEET NO. PMP - 1  
APPROVED: \_\_\_\_\_  
DATE: \_\_\_\_\_  
SEAL  
1/7/2022  
DOCUMENT NOT CONSIDERED FINAL UNLESS ALL SIGNATURES COMPLETED  
Stantec

ROADWAY STANDARD DRAWINGS

THE FOLLOWING ROADWAY STANDARDS AS APPEAR IN "ROADWAY STANDARD DRAWINGS" - PROJECT SERVICES UNIT - N.C. DEPARTMENT OF TRANSPORTATION - RALEIGH, N.C., DATED JANUARY 2018 ARE APPLICABLE TO THIS PROJECT AND BY REFERENCE HEREBY ARE CONSIDERED A PART OF THESE PLANS:

STD. NO.	TITLE
1205.01	PAVEMENT MARKINGS - LINE TYPES & OFFSETS
1205.02	PAVEMENT MARKINGS - 2 LANE & MULTILANE ROADWAYS
1205.03	PAVEMENT MARKINGS - EXIT & ENTRANCE RAMP
1250.01	RAISED PAVEMENT MARKERS - INSTALLATION SPACING
1251.01	RAISED PAVEMENT MARKERS - PERMANENT & TEMPORARY

FINAL PAVEMENT MARKING SCHEDULE

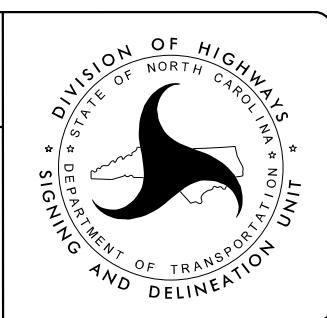
SYMBOL	DESCRIPTION	PAY ITEM
C1	WHITE EDGELINE	(4", 20 MIL) COLD APPLIED PLASTIC
C3	10 FT WHITE SKIP	(4", 20 MIL) COLD APPLIED PLASTIC
C13	YELLOW DOUBLE CENTER	(4", 20 MIL) COLD APPLIED PLASTIC
C20	WHITE EDGELINE	(6", 20 MIL) COLD APPLIED PLASTIC
C22	10 FT WHITE SKIP	(6", 20 MIL) COLD APPLIED PLASTIC
C23	3 FT -9 FT/SP WHITE MINISKIP	(6", 20 MIL) COLD APPLIED PLASTIC
C30	YELLOW EDGELINE	(6", 20 MIL) COLD APPLIED PLASTIC
C50	WHITE GORELINE	(12", 20 MIL) COLD APPLIED PLASTIC

GENERAL NOTES

THE FOLLOWING GENERAL NOTES APPLY AT ALL TIMES FOR THE DURATION OF THE CONSTRUCTION PROJECT, EXCEPT WHEN OTHERWISE NOTED IN THE PLAN, OR DIRECTED BY THE ENGINEER.

- A) INSTALL PAVEMENT MARKINGS AND PAVEMENT MARKERS ON THE FINAL SURFACE AS FOLLOWS:  
ROAD NAME MARKING MARKER  
BRIDGE DECKS COLD APPLIED PLASTIC PERMANENT RAISED
- B) TIE PROPOSED PAVEMENT MARKING LINES TO EXISTING PAVEMENT MARKING LINES.
- C) REMOVE/REPLACE ANY CONFLICTING/DAMAGED PAVEMENT MARKINGS AND MARKERS.

PLAN REVIEWED BY: N.C.D.O.T. SIGNING AND DELINEATION UNIT  
AYMAN ALQUDWAH, P.E. SIGNING & DELINEATION REGIONAL ENGINEER  
MITCH EATON SIGNING & DELINEATION PROJECT DESIGN ENGINEER

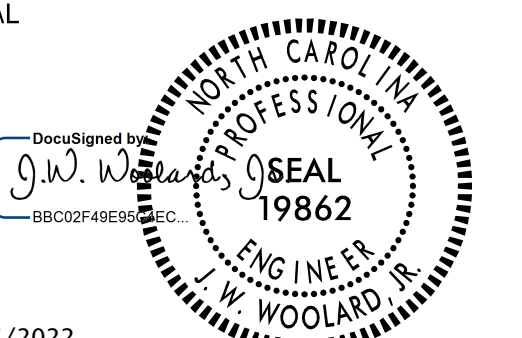



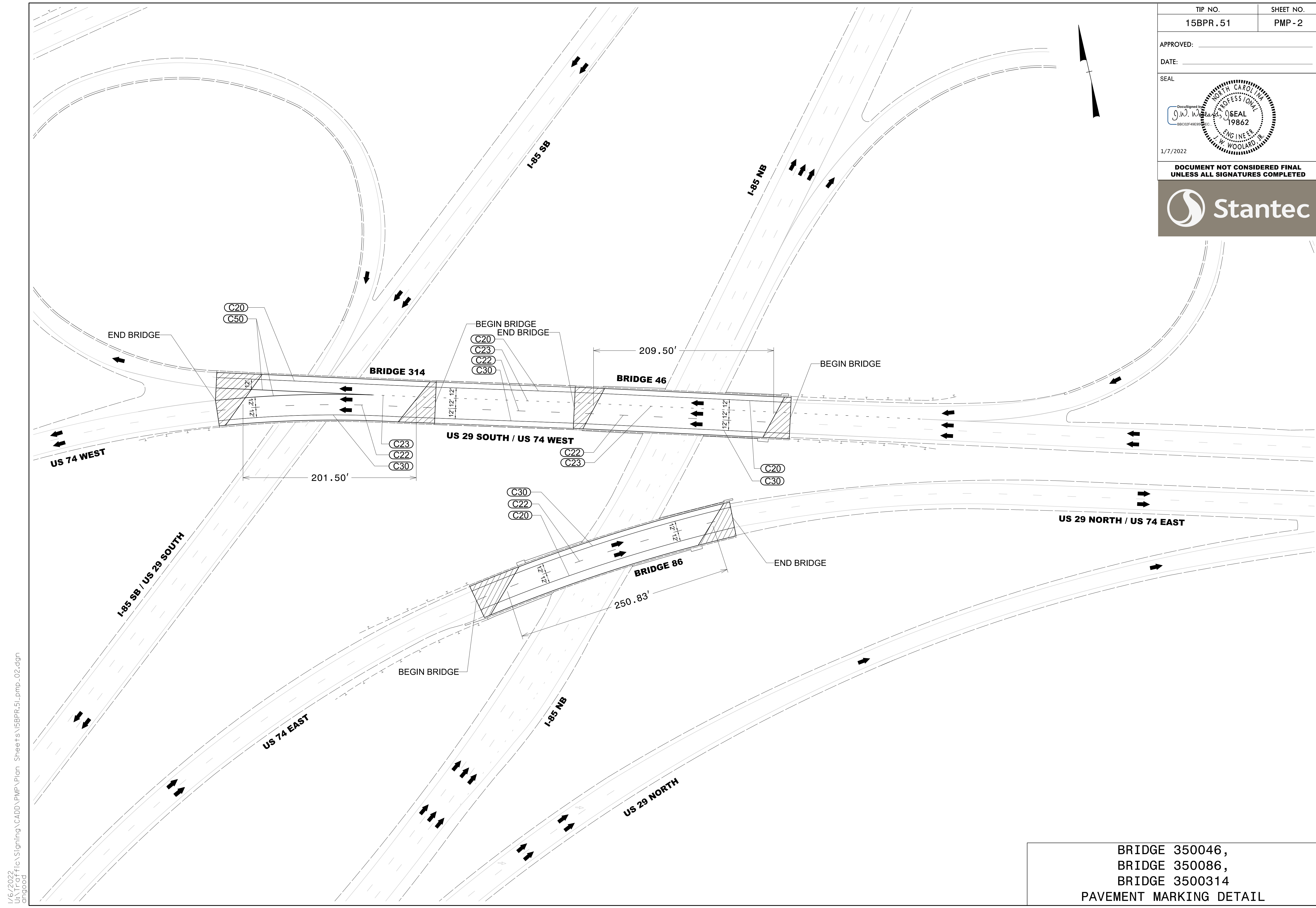
PLAN PREPARED BY:  
JAY WOOLARD, P.E. SENIOR TRANSPORTATION ENGINEER  
ANDREW N. GOOD TRANSPORTATION DESIGNER



INDEX

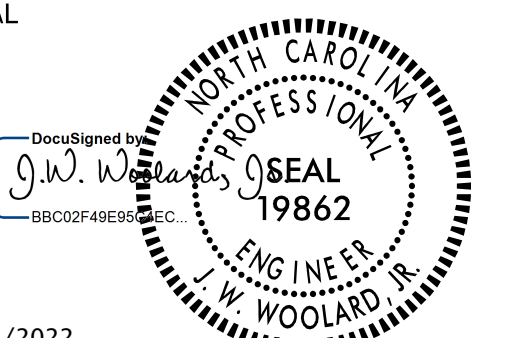

SHEET NO.	DESCRIPTION
PMP - 1	PAVEMENT MARKING PLAN TITLE AND SCHEDULE SHEET
PMP - 2 - 3	PAVEMENT MARKING DETAIL

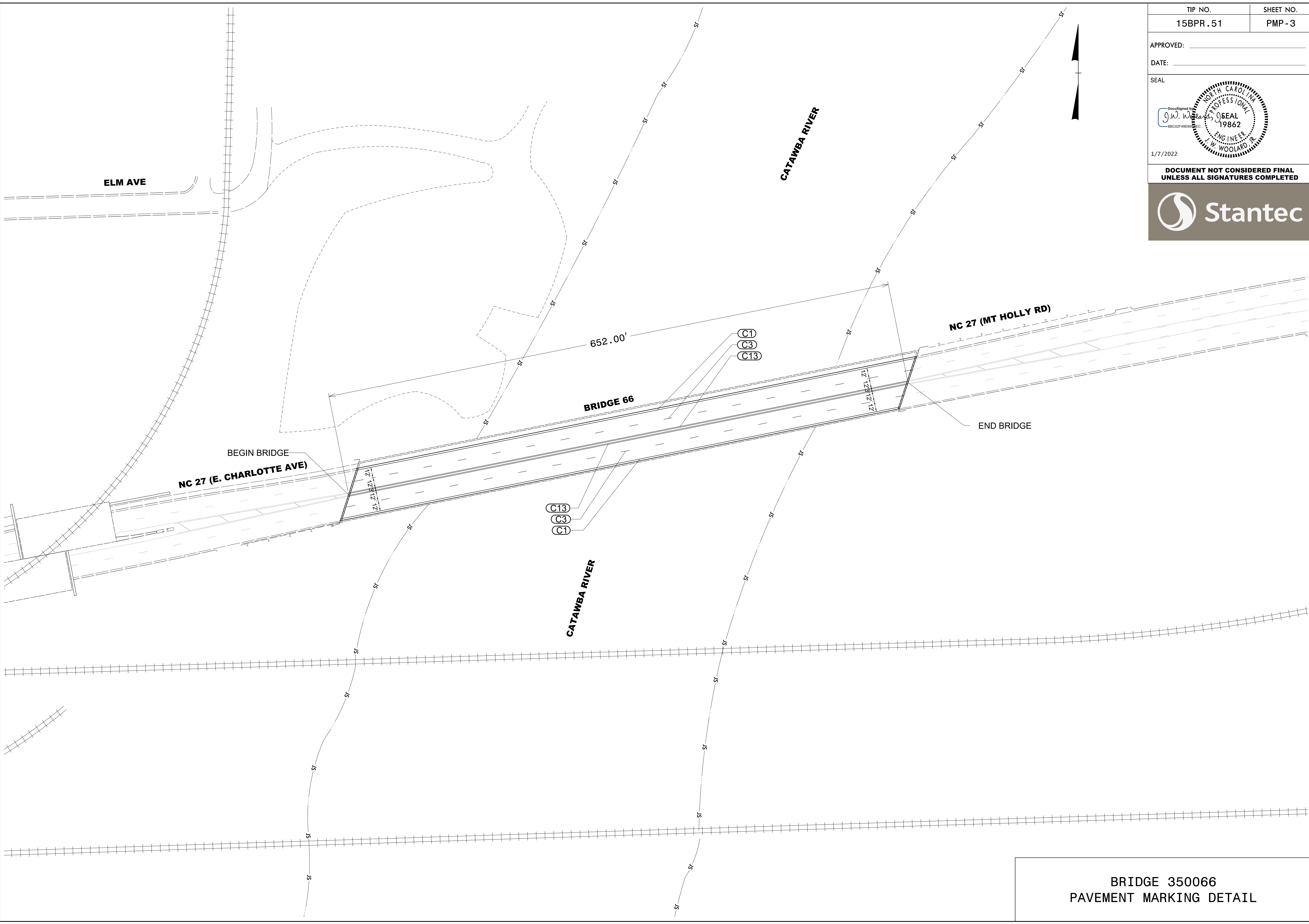
TIP NO. 15BPR.51	SHEET NO. PMP-2
APPROVED: _____	
DATE: _____	
SEAL	
	
1/7/2022	
DOCUMENT NOT CONSIDERED FINAL UNLESS ALL SIGNATURES COMPLETED	
	



1/6/2022  
 U:\T\aff\Signing\CADD\PM\Plan\_Sheets\15BPR\51.pmp\_02.dgn  
 andgood

BRIDGE 350046,  
 BRIDGE 350086,  
 BRIDGE 3500314  
 PAVEMENT MARKING DETAIL

TIP NO. 15BPR.51	SHEET NO. PMP-3
APPROVED: _____	
DATE: _____	
SEAL	
	
1/7/2022	
DOCUMENT NOT CONSIDERED FINAL UNLESS ALL SIGNATURES COMPLETED	
	



I:\6\2022  
 Us\T\affio\Signing\CADD\PM\Plan\_Sheets\5BPR\51.pmp\_03.dgn  
 angood

**BRIDGE 350066  
 PAVEMENT MARKING DETAIL**