

**NOTES**

STRUCTURAL STEEL SHALL BE AASHTO GRADE 36 OR GREATER.

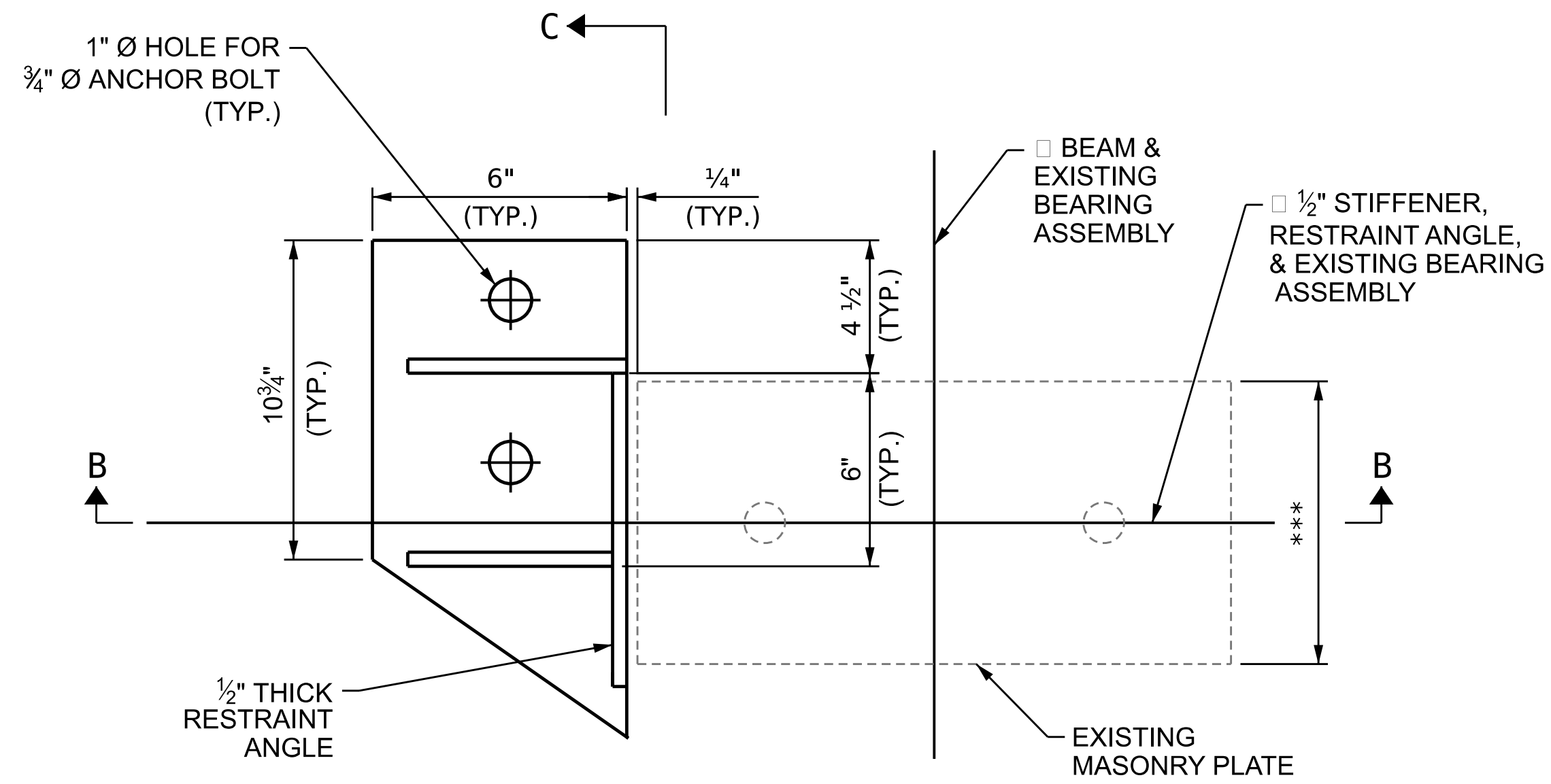
STRUCTURAL STEEL, ANCHOR BOLTS, NUTS, AND WASHERS SHALL BE GALVANIZED IN ACCORDANCE WITH THE STANDARD SPECIFICATIONS.

ANCHOR BOLTS SHALL MEET THE REQUIREMENTS OF ASTM A449. NUTS SHALL MEET THE REQUIREMENTS OF AASHTO M291-DH OR AASHTO M292-2H. WASHERS SHALL MEET THE REQUIREMENTS OF AASHTO M293. SHOP DRAWINGS ARE NOT REQUIRED FOR ANCHOR BOLTS, NUTS AND WASHERS. SHOP INSPECTION IS REQUIRED.

ADHESIVELY ANCHORED ANCHOR BOLTS SHALL HAVE MINIMUM EMBEDMENT OF 12" WITH SUFFICIENT PROJECTION TO PROVIDE FULL NUT ENGAGEMENT ABOVE KEEPER ASSEMBLY. SEE STANDARD SPECIFICATIONS FOR ADHESIVE ANCHOR REQUIREMENTS. NO FIELD TESTING REQUIRED.

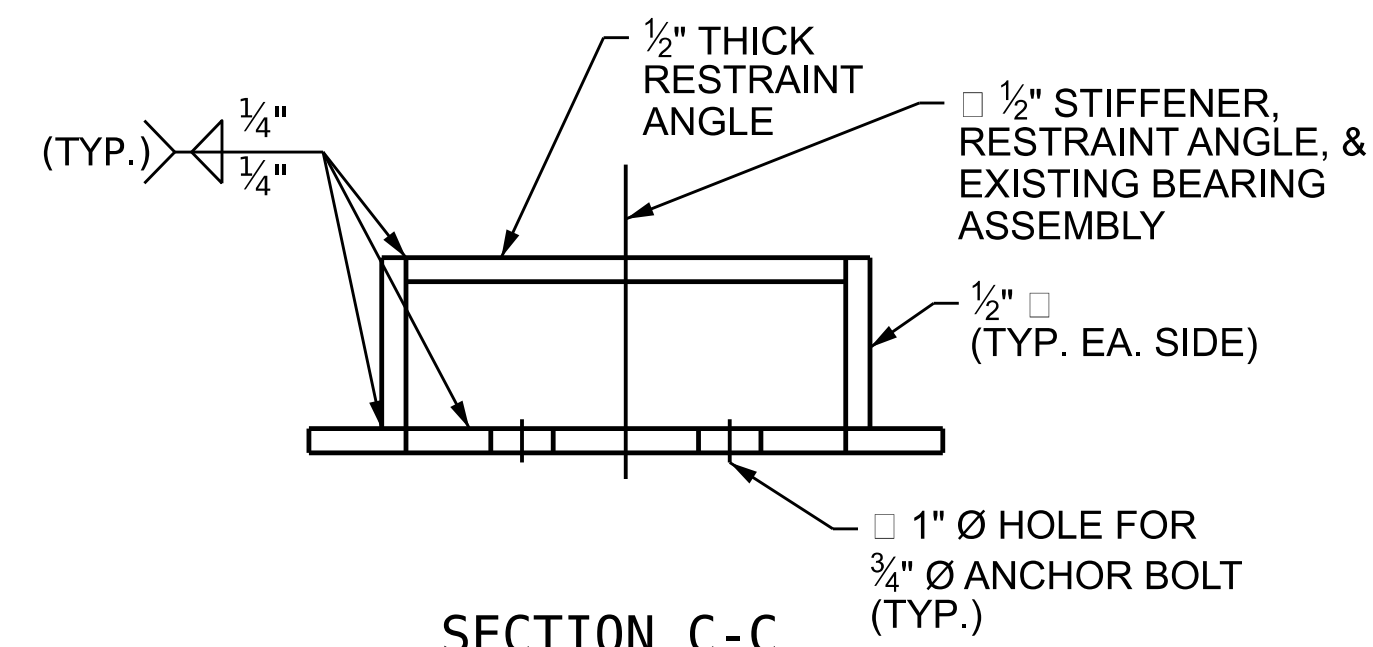
THE CONTRACTOR SHALL FIELD VERIFY THE LOCATION OF PROPOSED ANCHOR BOLTS AND EXISTING CAP REINFORCING STEEL TO ENSURE NO CONFLICTS.

THE CONTRACTOR SHALL SUBMIT WORKING DRAWINGS SHOWING LOCATIONS OF ANCHOR BOLTS AND EXISTING CAP REINFORCEMENT TO THE ENGINEER FOR APPROVAL PRIOR TO FABRICATION OF ASSEMBLIES.

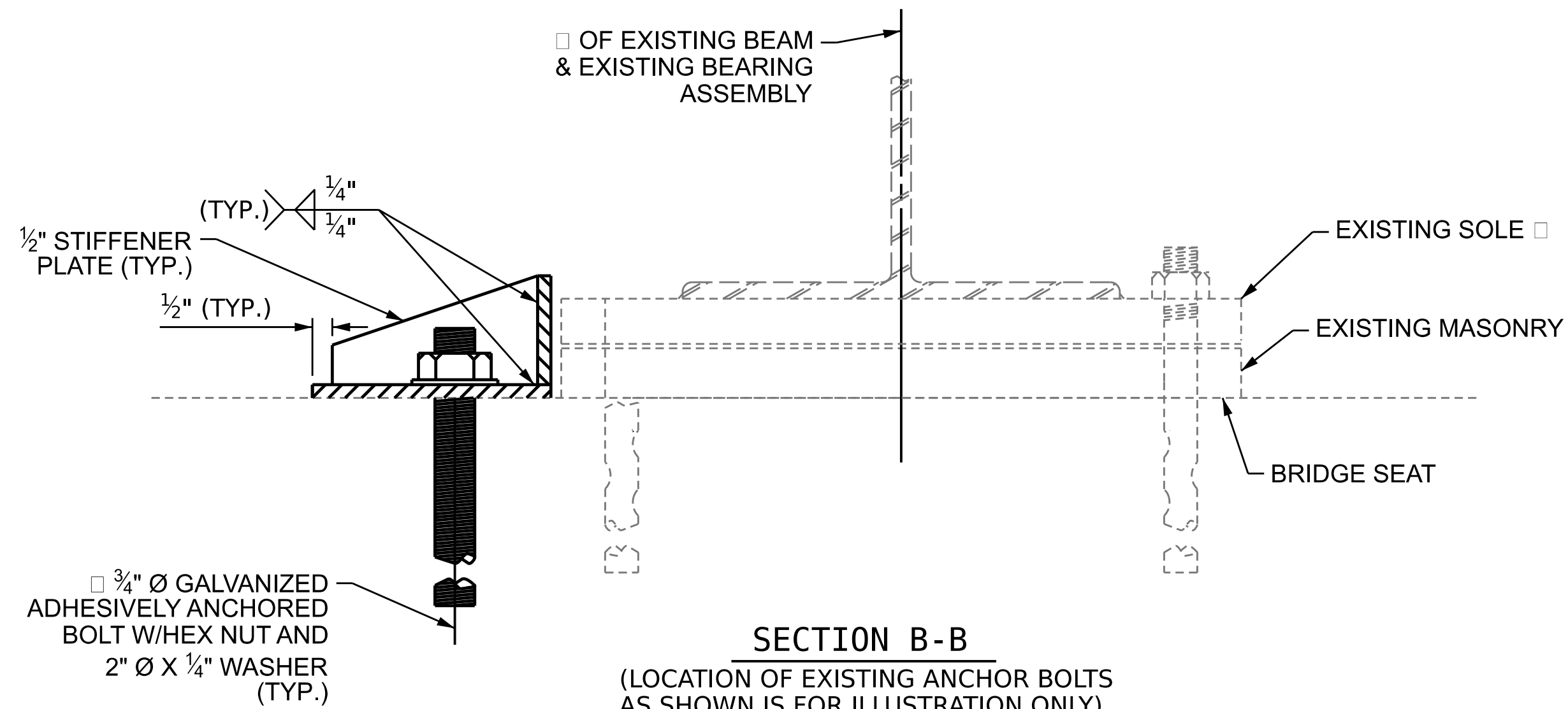


\*\*\* LENGTH OF RESTRAINT ANGLE SHALL MATCH WIDTH OF EXISTING MASONRY PLATE PLUS 1/2"

**PLAN**



**SECTION C-C**



**SECTION B-B**

(LOCATION OF EXISTING ANCHOR BOLTS AS SHOWN IS FOR ILLUSTRATION ONLY)

**STEEL RESTRAINT ANGLE OPTION**

PROJECT NO. 15BPR.51  
GASTON COUNTY  
 BRIDGE NO. 350086



STATE OF NORTH CAROLINA  
 DEPARTMENT OF TRANSPORTATION  
 RALEIGH  
 STANDARD  
**BEARING KEEPER  
 DETAILS**

ASSEMBLED BY :	H.A. LOCKLEAR	DATE :	11/2021
CHECKED BY :	A. SORSENGINH	DATE :	12/2021
DRAWN BY :	NAP 08/18	REV.	-
CHECKED BY :	-	REV.	-

DOCUMENT NOT CONSIDERED  
 FINAL UNLESS ALL  
 SIGNATURES COMPLETED

REVISIONS						SHEET NO.
NO.	BY:	DATE:	NO.	BY:	DATE:	
1			3			S3-10
2			4			TOTAL SHEETS 67