

ANTICIPATED STEEL REPAIR LOCATIONS					
REPAIR	SPAN	BEAM	LOCATION	DIM "A"	DIM "B"
S	C	5	BENT 2	6"	
F	C	5	BENT 2		24"
S	C	7	BENT 2	6"	

BEAM REPAIR QUANTITY TABLE					
STEEL PLATES		BRIDGE JACKING		STIFFENER	
LBS.		EA.		LBS.	
ESTIMATE	ACTUAL	ESTIMATE	ACTUAL	ESTIMATE	ACTUAL
0.0		0		8.0	
STEEL LATERAL BRACING		HARDWARE REPAIR		BEAM END REPAIR	
LBS.		LBS.		LBS.	
ESTIMATE	ACTUAL	ESTIMATE	ACTUAL	ESTIMATE	ACTUAL
0.0		0.0		29.0	



AS-BUILT REPAIR QUANTITY TABLE				
UNDERSIDE OF DECK REPAIRS - SPAN C				
REPAIR	ESTIMATE		ACTUAL	
	AREA SQ. FT.	VOLUME CU. FT.	AREA SQ. FT.	VOLUME CU. FT.
SHOTCRETE REPAIRS				
UNDERSIDE OF DECK	0.0	0.0		
BENT DIAPHRAGM	2.0	0.7		
OVERHANG	0.8	0.3		
CONCRETE REPAIRS				
UNDERSIDE OF DECK	0.0	0.0		
BENT DIAPHRAGM	0.0	0.0		
OVERHANG	0.0	0.0		
EPOXY RESIN INJECTION		LIN. FT.		LIN. FT.
UNDERSIDE OF DECK		0.0		
BENT DIAPHRAGM		0.0		
OVERHANG		1.5		
DECK DRAIN REPAIR		EACH		EACH
DECK DRAIN REPAIR		1		

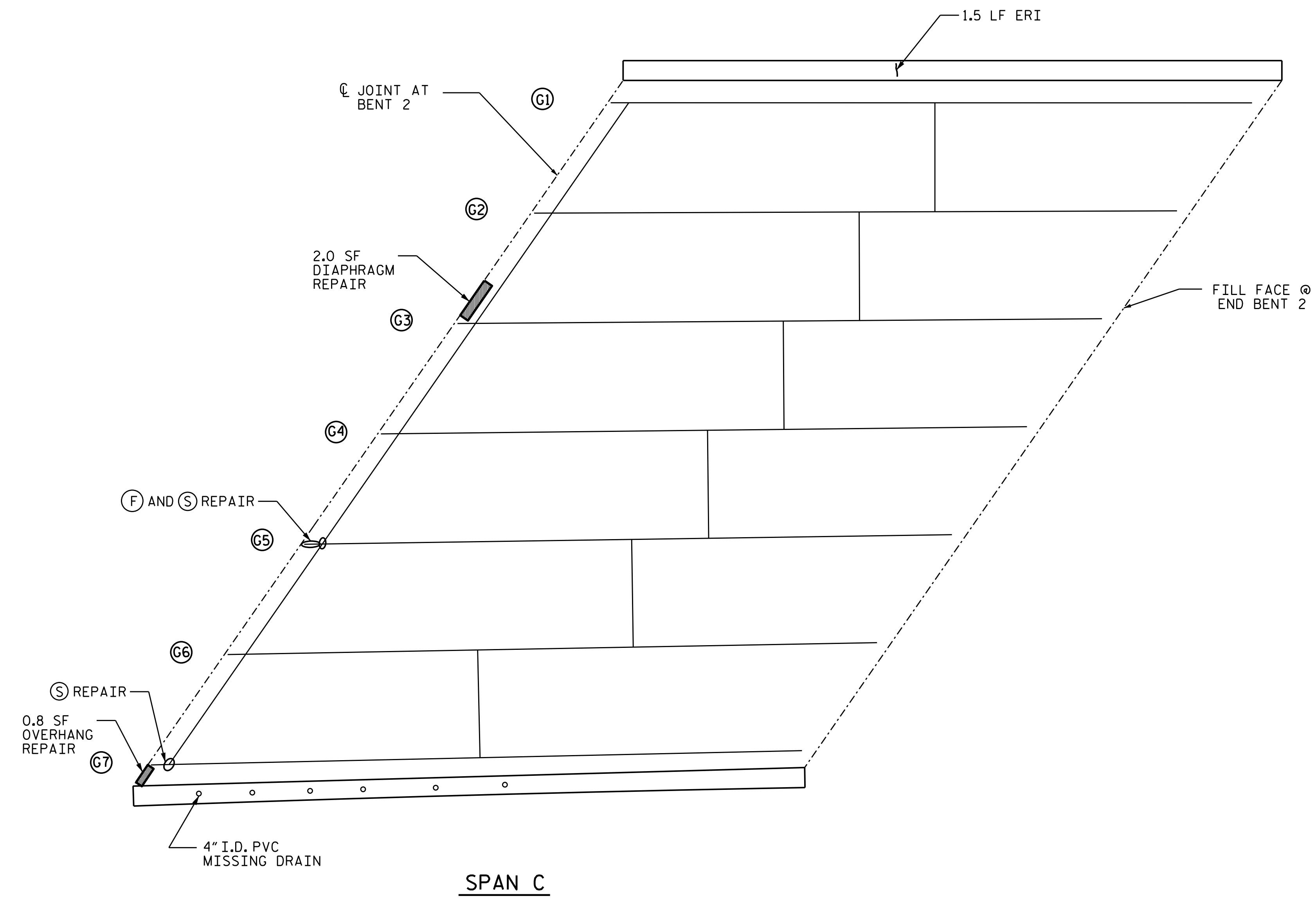
VALUES IN CHART REPRESENT ESTIMATED REPAIR TOTALS AFTER REMOVAL OF UNSOUND CONCRETE, MINIMUM OF 1" BEHIND REBAR AND MINIMUM 2" CLEARANCE TO SAWCUT. SEE "OVERHANG, DIAPHRAGM AND BRIDGE RAIL REPAIR DETAILS" SHEET.

**NOTES**

- FOR UNDERSIDE OF DECK REPAIRS, SEE "OVERHANG, DIAPHRAGM AND BRIDGE RAIL REPAIR DETAILS" SHEET.
- FOR OVERHANG REPAIRS, SEE "OVERHANG, DIAPHRAGM AND BRIDGE RAIL REPAIR DETAILS" SHEET.
- FOR SHOTCRETE REPAIRS, SEE SPECIAL PROVISIONS.
- FOR DECK DRAIN REPAIRS, SEE SPECIAL PROVISIONS.
- FOR CONCRETE REPAIRS, SEE SPECIAL PROVISIONS.
- SHOTCRETE REPAIRS MAY BE REPLACED WITH CONCRETE REPAIRS WITH THE APPROVAL OF THE ENGINEER.
- FOR BEAM PLATING REPAIR, SEE "BEAM PLATING REPAIR DETAILS" SHEETS.
- FOR BOLTED BEAM REPAIR, SEE "BEAM PLATING REPAIR DETAILS" SHEETS.

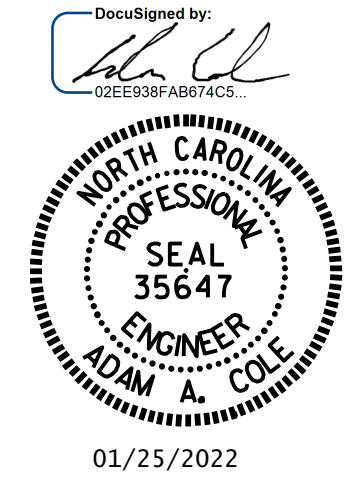
- ① BEAM NUMBER
- ② BEAM END REPAIR
- ③ PLATING REPAIR
- ④ STIFFENER REPAIR
- ⑤ BOTTOM FLANGE REPAIR
- ⑥ ANCHOR BOLT REPAIR
- ⑦ GUSSET PLATE REPAIR
- ⑧ LATERAL BRACE REPAIR
- ⑨ TYPE I BRIDGE JACKING

-  SHOTCRETE REPAIR AREA
-  ERI - EPOXY RESIN INJECTION



PROJECT NO. 15BPR.51  
GASTON COUNTY  
 BRIDGE NO. 350314

SHEET 3 OF 3



STATE OF NORTH CAROLINA  
 DEPARTMENT OF TRANSPORTATION  
 RALEIGH

DECK UNDERSIDE REPAIR  
 SPAN C

DRAWN BY : GHOLAMREZA KOUCHEKI DATE : 11/2021  
 CHECKED BY : H.A. LOCKLEAR DATE : 12/2021

NO.	REVISIONS			SHEET NO.
	BY:	DATE:	NO.	
1			3	S2-10
2			4	TOTAL SHEETS 67