

**NOTES**

REPAIR LOCATIONS AND ESTIMATED QUANTITIES ARE GIVEN WITH THE BEST INFORMATION AVAILABLE. IF ADDITIONAL REPAIRS NOT SHOWN ON THE DRAWINGS ARE DEEMED NECESSARY BY THE ENGINEER, THE ENGINEER WILL NOTE ON THE DRAWINGS THE APPROXIMATE LOCATIONS AND DESCRIPTION OF THE REPAIRS AND ENTER THE ACTUAL QUANTITIES INTO THE AS-BUILT REPAIR QUANTITY TABLE.

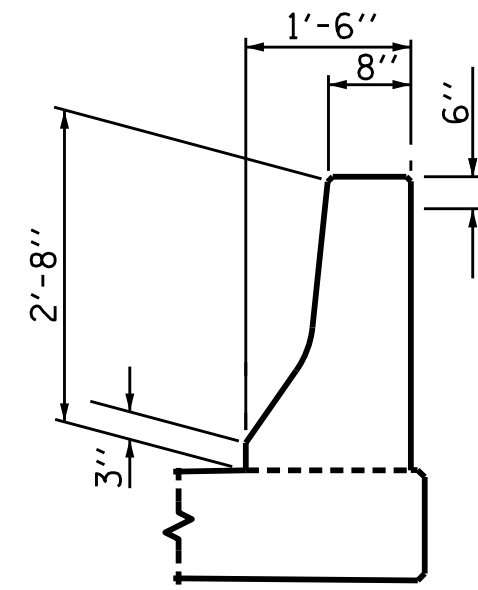
FOR SECTIONS B-B SEE "JOINT DETAILS" SHEET.

PAYMENT FOR CLASS II SURFACE PREPARATION IS BASED ON THE SQUARE FEET OF ADDITIONAL DEMOLITION REQUIRED FOLLOWING HYDRO-DEMOLITION OF THE BRIDGE DECK. SEE SPECIAL PROVISIONS.

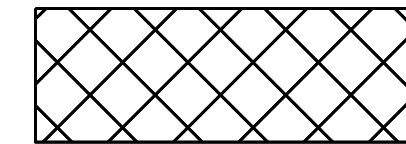
FOR LMC - VES OVERLAY, SEE SPECIAL PROVISION.

FOR SILANE BARRIER RAIL TREATMENT, SEE SPECIAL PROVISIONS.

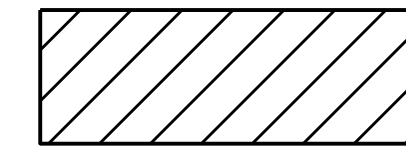
FOR BRIDGE JOINT DEMOLITION, SEE SPECIAL PROVISIONS.



LIMIT OF SILANE BARRIER RAIL APPLICATION.



BRIDGE JOINT DEMOLITION



CLASS II SURFACE PREPARATION

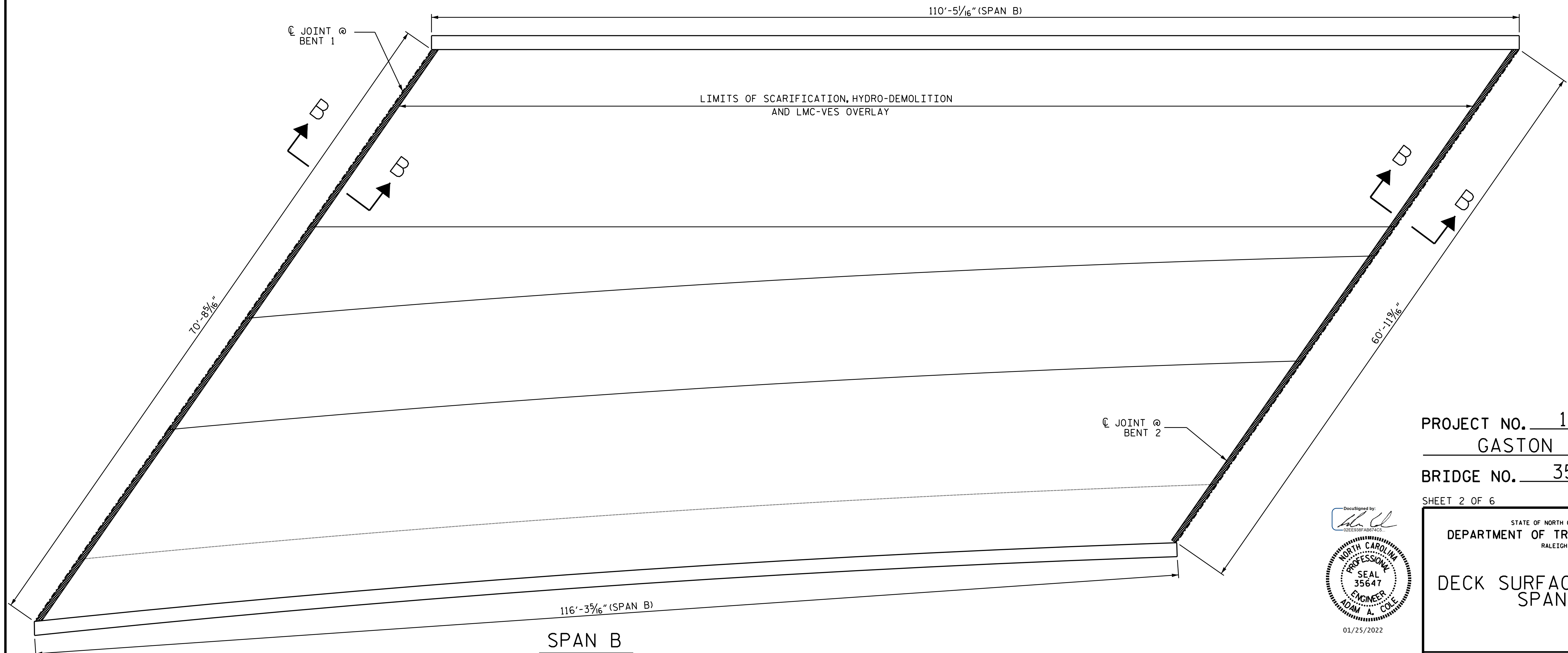
**AS-BUILT REPAIR QUANTITY TABLE**

**DECK SURFACE REPAIR - SPAN B**

	ESTIMATE	ACTUAL
HYDRO-DEMOLITION OF BRIDGE DECK	648.0 SQ. YDS.	
SCARIFYING BRIDGE DECK	648.0 SQ. YDS.	
CLASS II SURFACE PREPARATION	0.0 SQ. YDS.	
LATEX MODIFIED CONCRETE-VES	27.0 CU.YDS.	
PLACING & FINISHING LMC-VES OVERLAY	648.0 SQ. YDS.	
BRIDGE GROOVING FLOORS	5480.0 SQ. FT.	

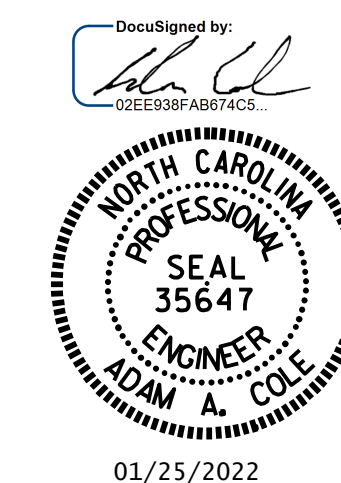
**SILANE BARRIER RAIL TREATMENT - SPAN B**

SURFACE PREPARATION FOR CONCRETE BARRIER	869.0 SQ. FT.	
SILANE BARRIER RAIL TREATMENT	869.0 SQ. FT.	



PROJECT NO. 15BPR.51  
GASTON COUNTY  
 BRIDGE NO. 350314

SHEET 2 OF 6



STATE OF NORTH CAROLINA  
 DEPARTMENT OF TRANSPORTATION  
 RALEIGH

**DECK SURFACE REPAIR  
 SPAN B**

DRAWN BY : GHOLAMREZA KOUCHEKI DATE : 11/2021  
 CHECKED BY : H.A. LOCKLEAR DATE : 12/2021

DOCUMENT NOT CONSIDERED  
 FINAL UNLESS ALL  
 SIGNATURES COMPLETED

REVISIONS						SHEET NO.
NO.	BY:	DATE:	NO.	BY:	DATE:	
1			3			S2-06
2			4			TOTAL SHEETS 67