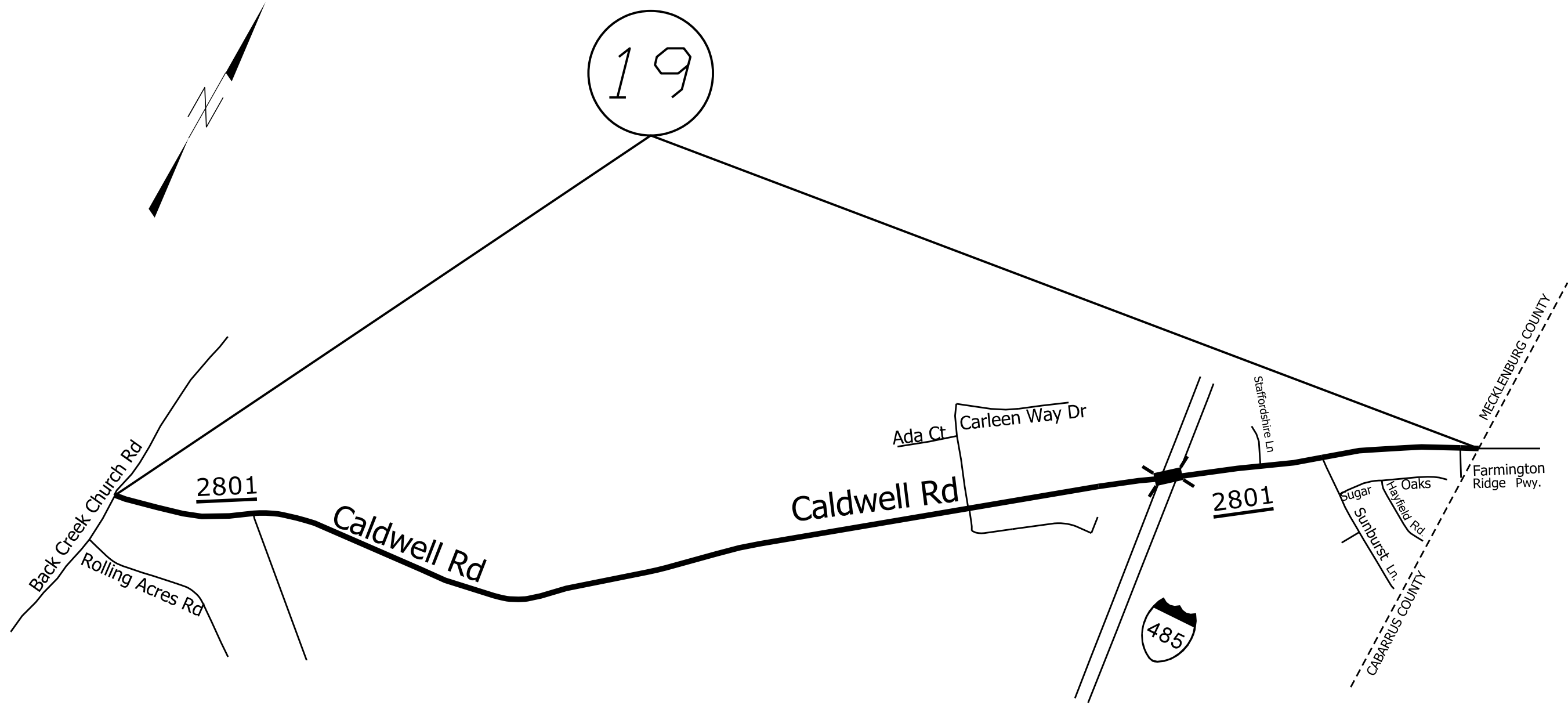


STATE	PROJECT NO.	SHEET NO.	TOTAL SHEETS
N.C.			11
WBS NO.	2022CPT.I0.08.I0601 2022CPT.I0.08.20601 2022CPT.I0.08.20602 FDR		




MAP

19 SR 2801 CALDWELL RD

DESCRIPTION

FROM CABARRUS COUNTY LINE TO BACK CREEK CHURCH ROAD

2022 MECKLENBURG COUNTY RESURFACING			
SCALE	-NA-		REVISIONS
DATE	8/21		
DWG. BY	JHE		
DESIGN BY	JHE		
APPROVED			