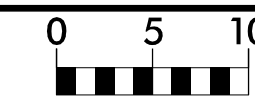
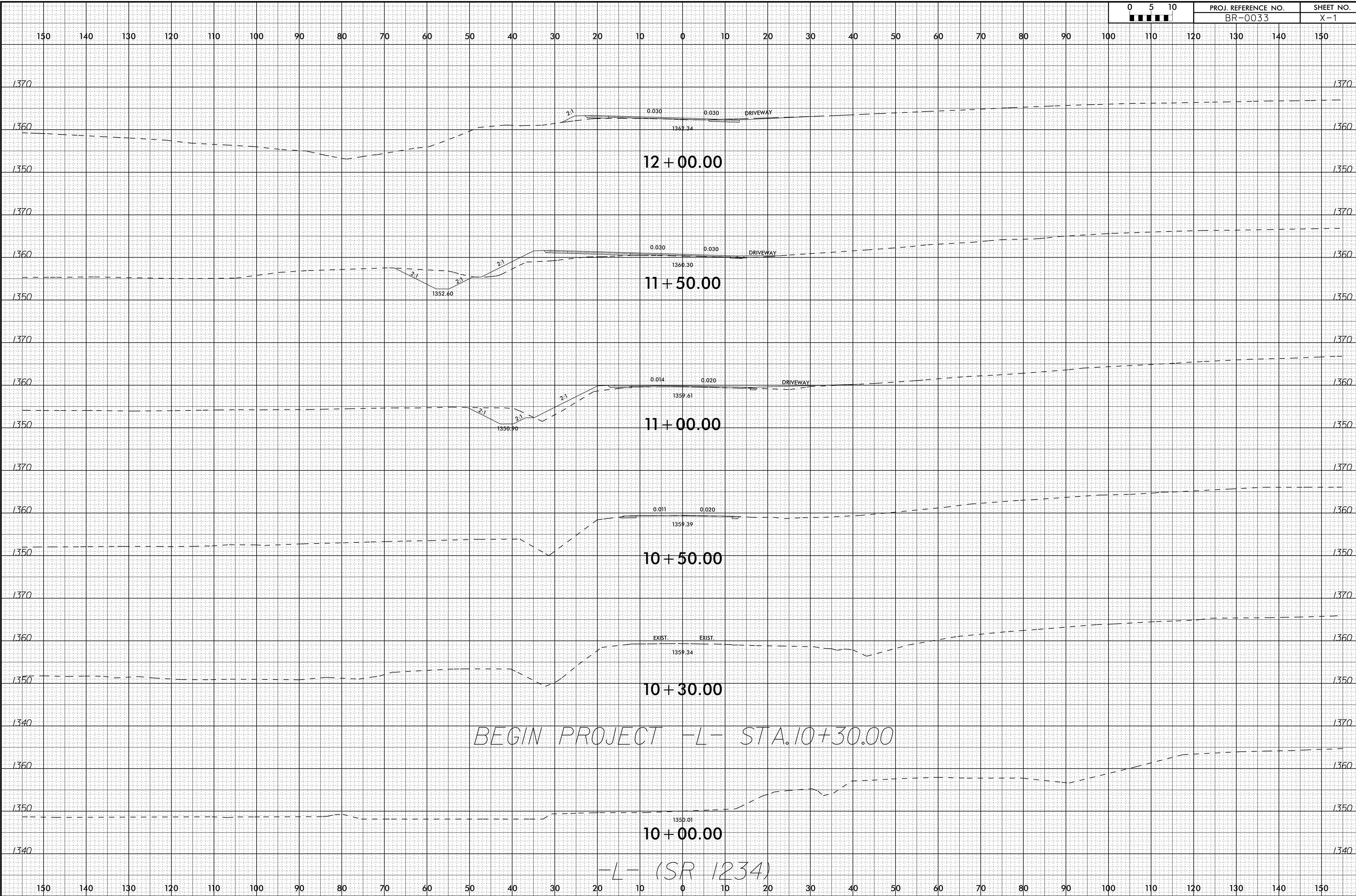


6/23/16



PROJ. REFERENCE NO.
BR-0033

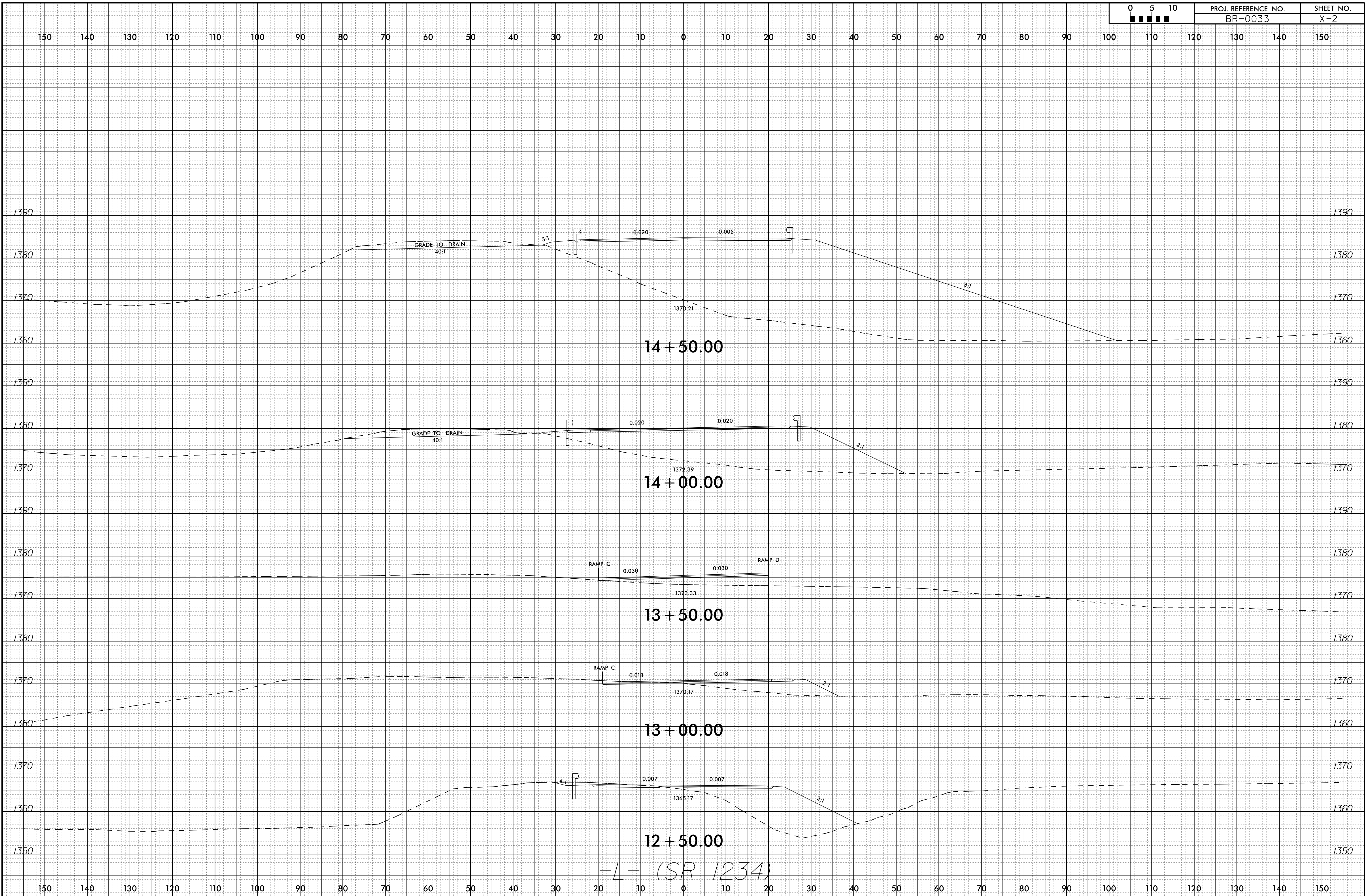
SHEET NO.
X-1



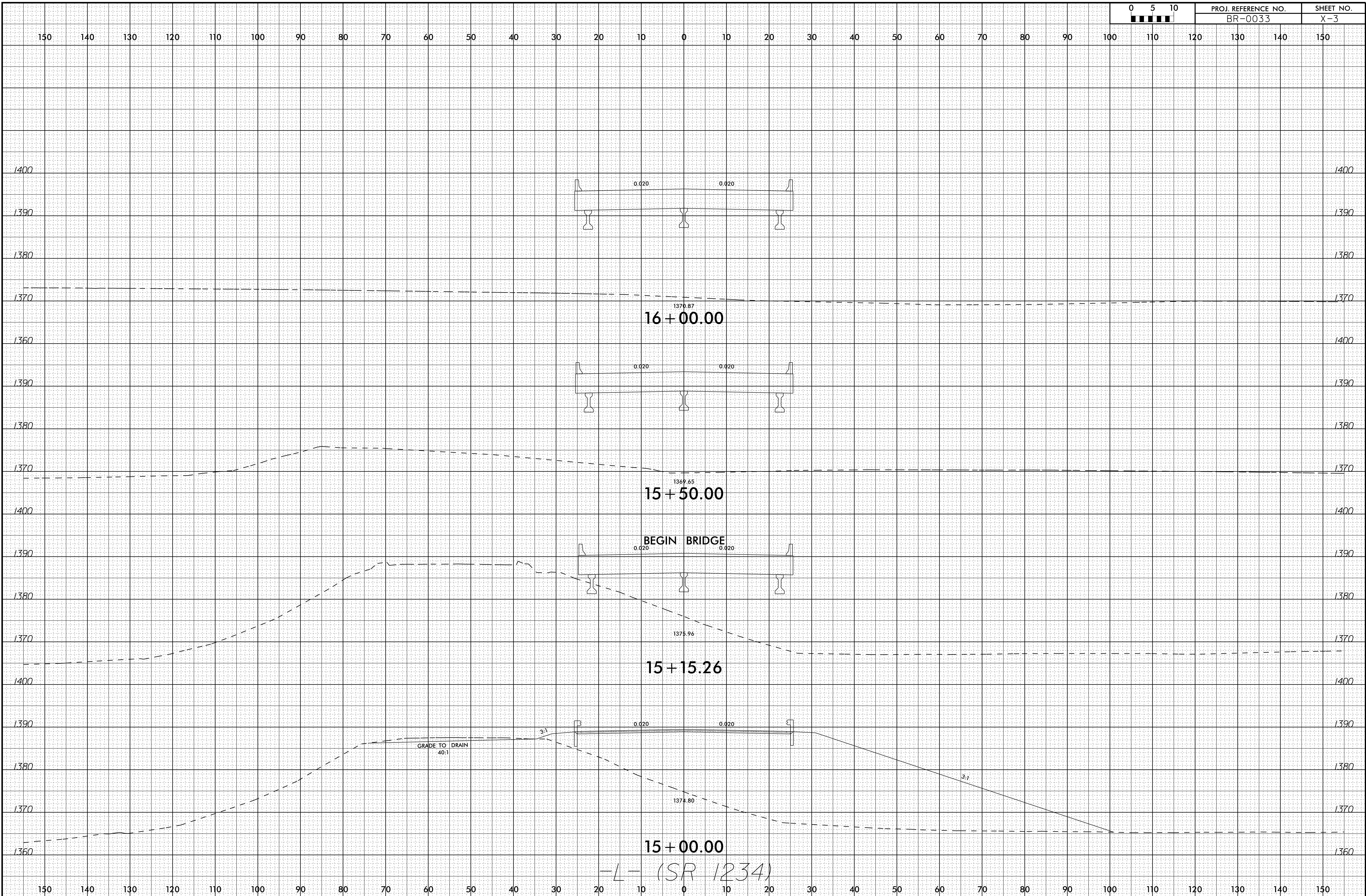
BEGIN PROJECT -L- STA. 10+30.00

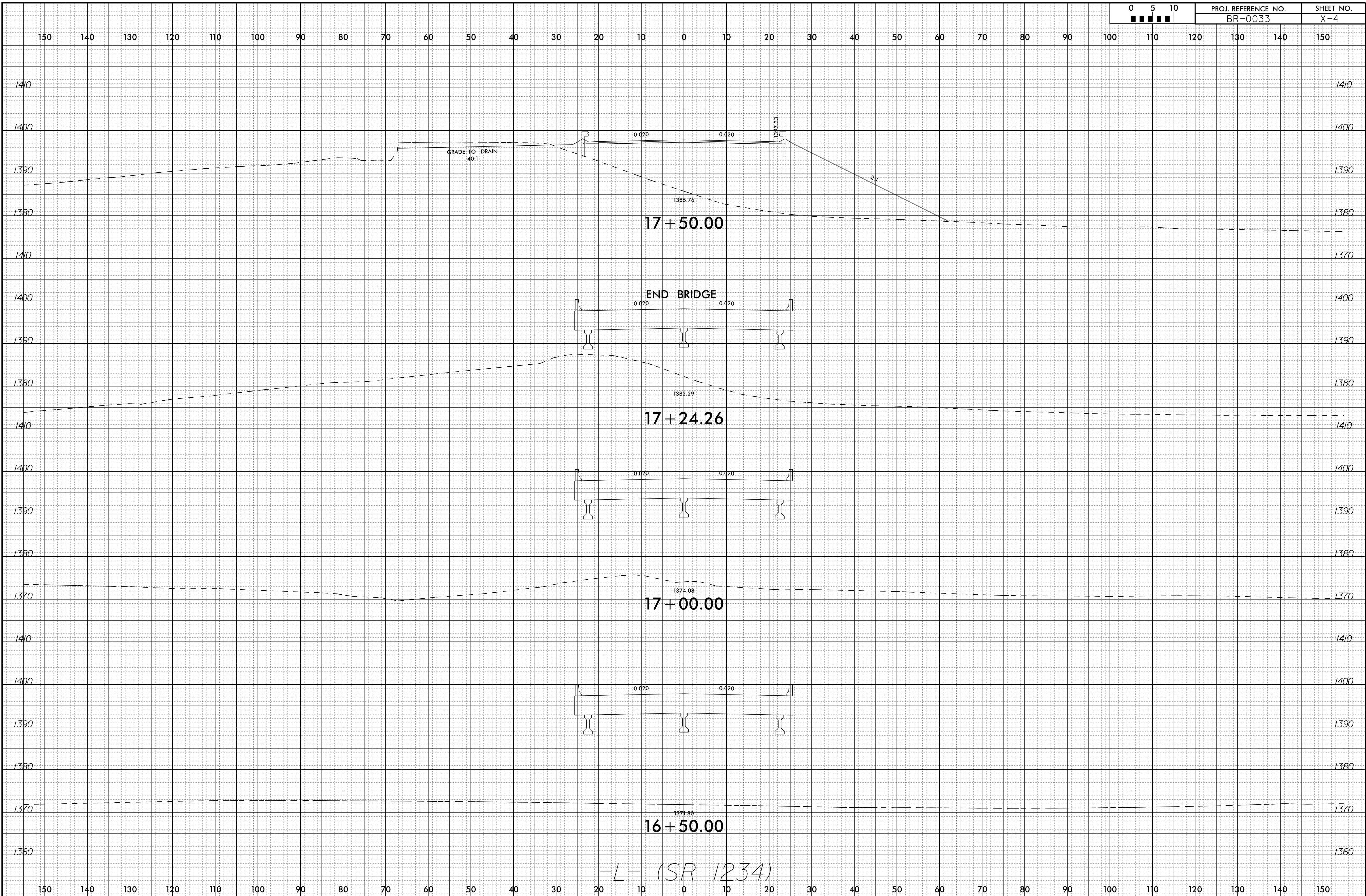
-L- (SR 1234)

I:\DEC-2021\2120
P:\Roadway\Corridor-Modeling\BR-0033_Pdij-xpl.L.dgn
D:\carrin



-L- (SR 1234)

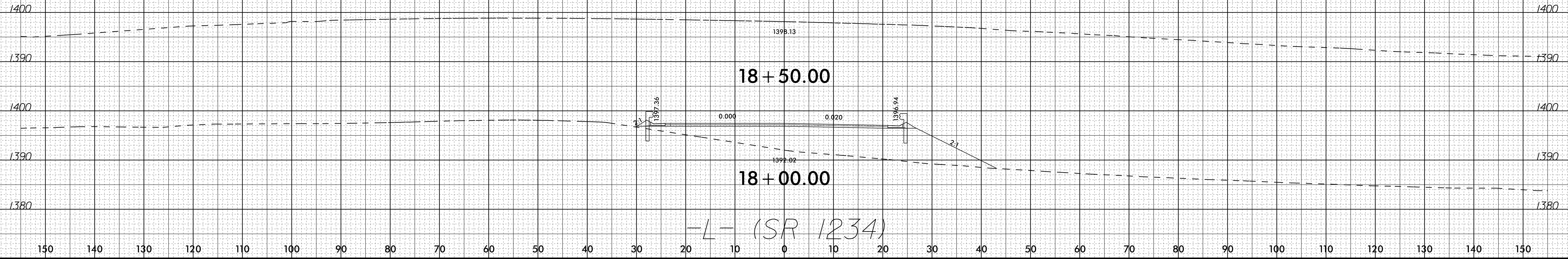


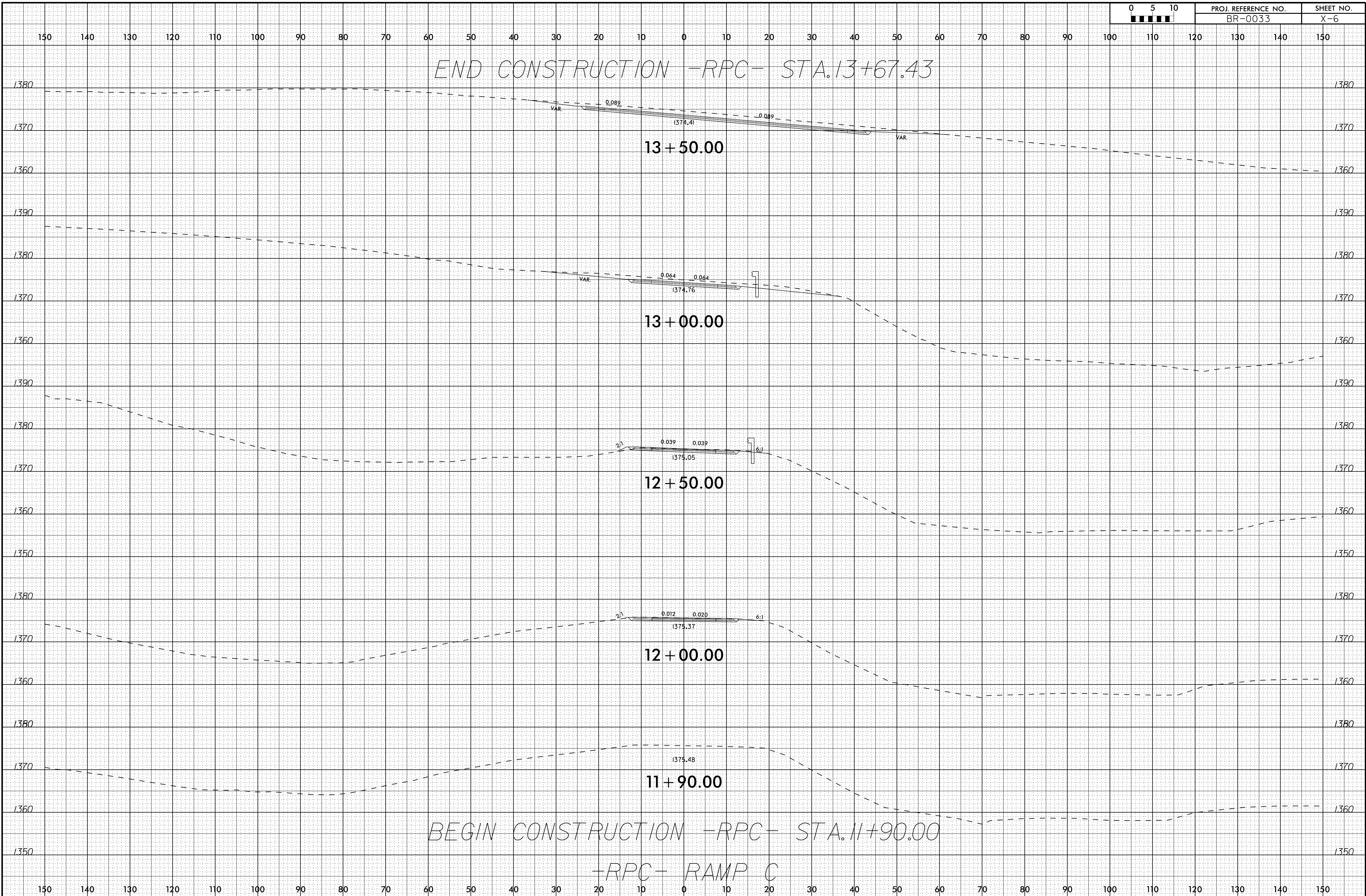


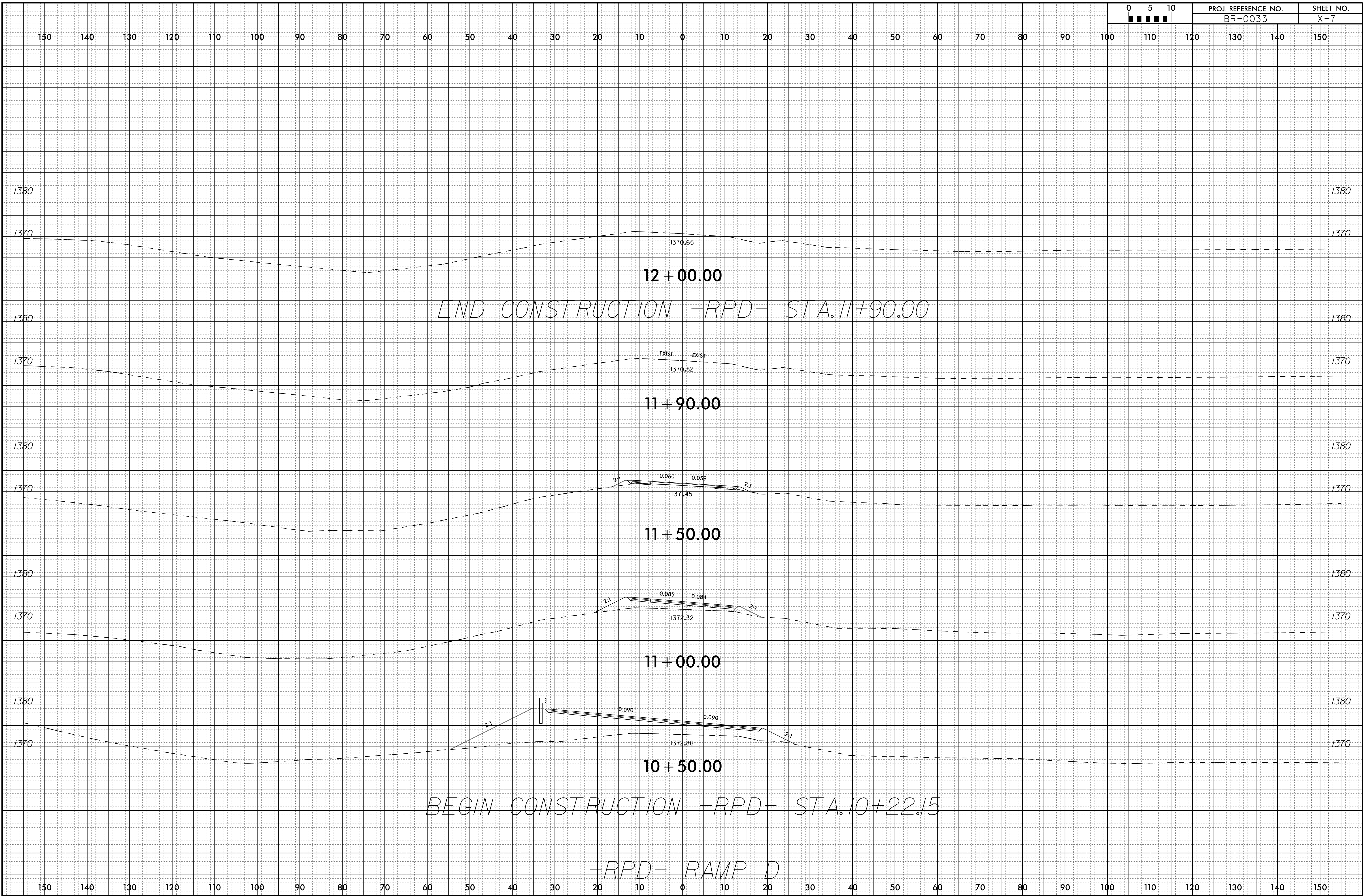
-L- (SR 1234)

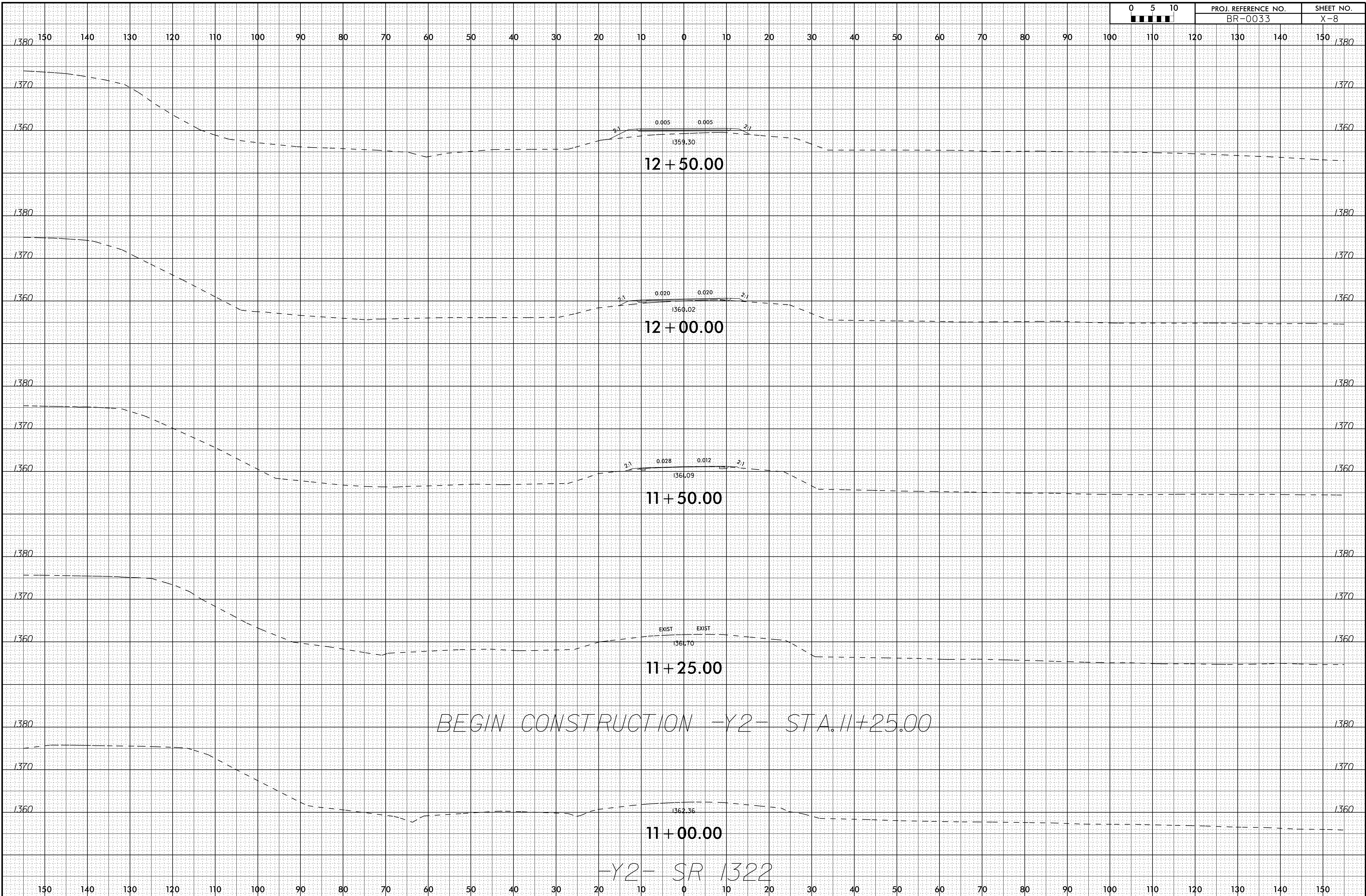
150 140 130 120 110 100 90 80 70 60 50 40 30 20 10 0 10 20 30 40 50 60 70 80 90 100 110 120 130 140 150

END PROJECT -L- STA. 18+54.66



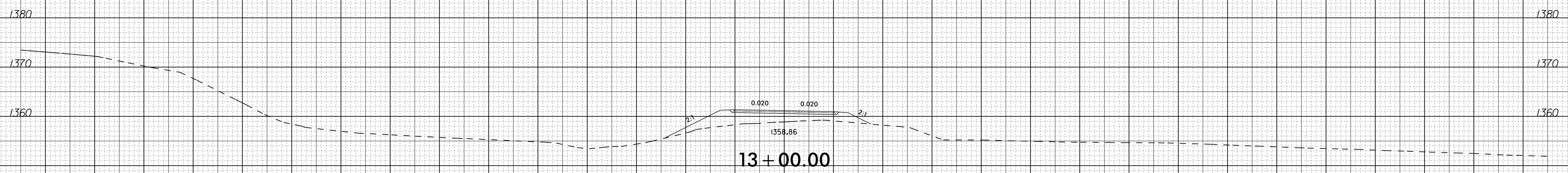
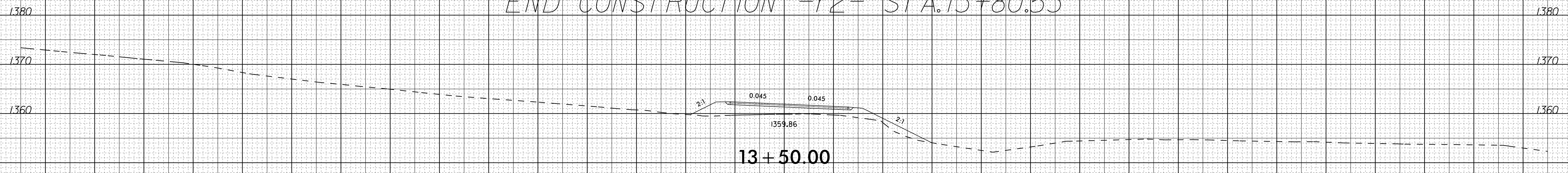






150 140 130 120 110 100 90 80 70 60 50 40 30 20 10 0 10 20 30 40 50 60 70 80 90 100 110 120 130 140 150

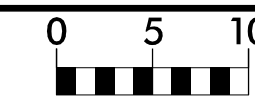
END CONSTRUCTION -Y2- STA. 13+80.53



-Y2- SR 1322

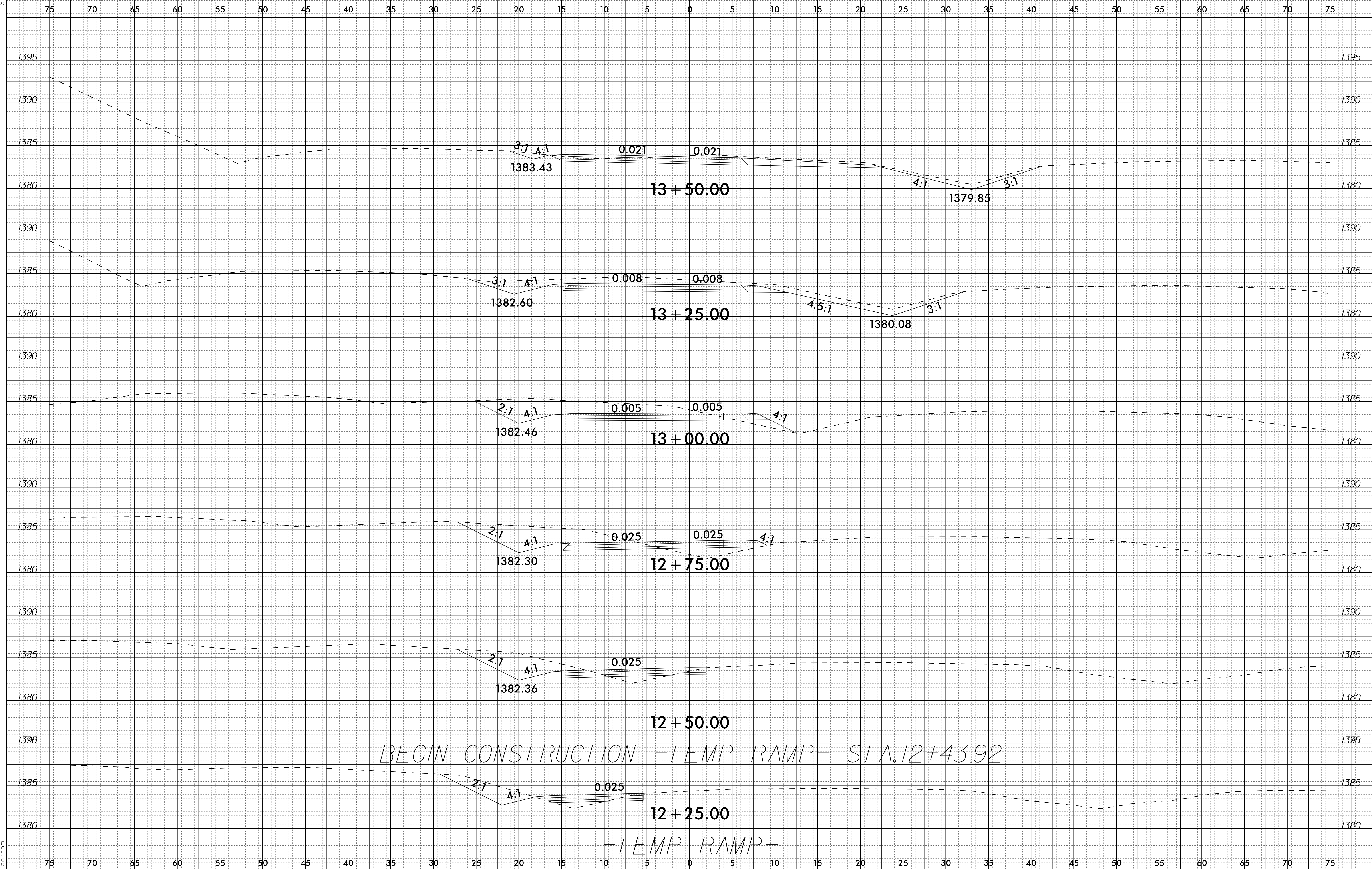
150 140 130 120 110 100 90 80 70 60 50 40 30 20 10 0 10 20 30 40 50 60 70 80 90 100 110 120 130 140 150

6/23/16



PROJ. REFERENCE NO.
BR-0033

SHEET NO.
X-10

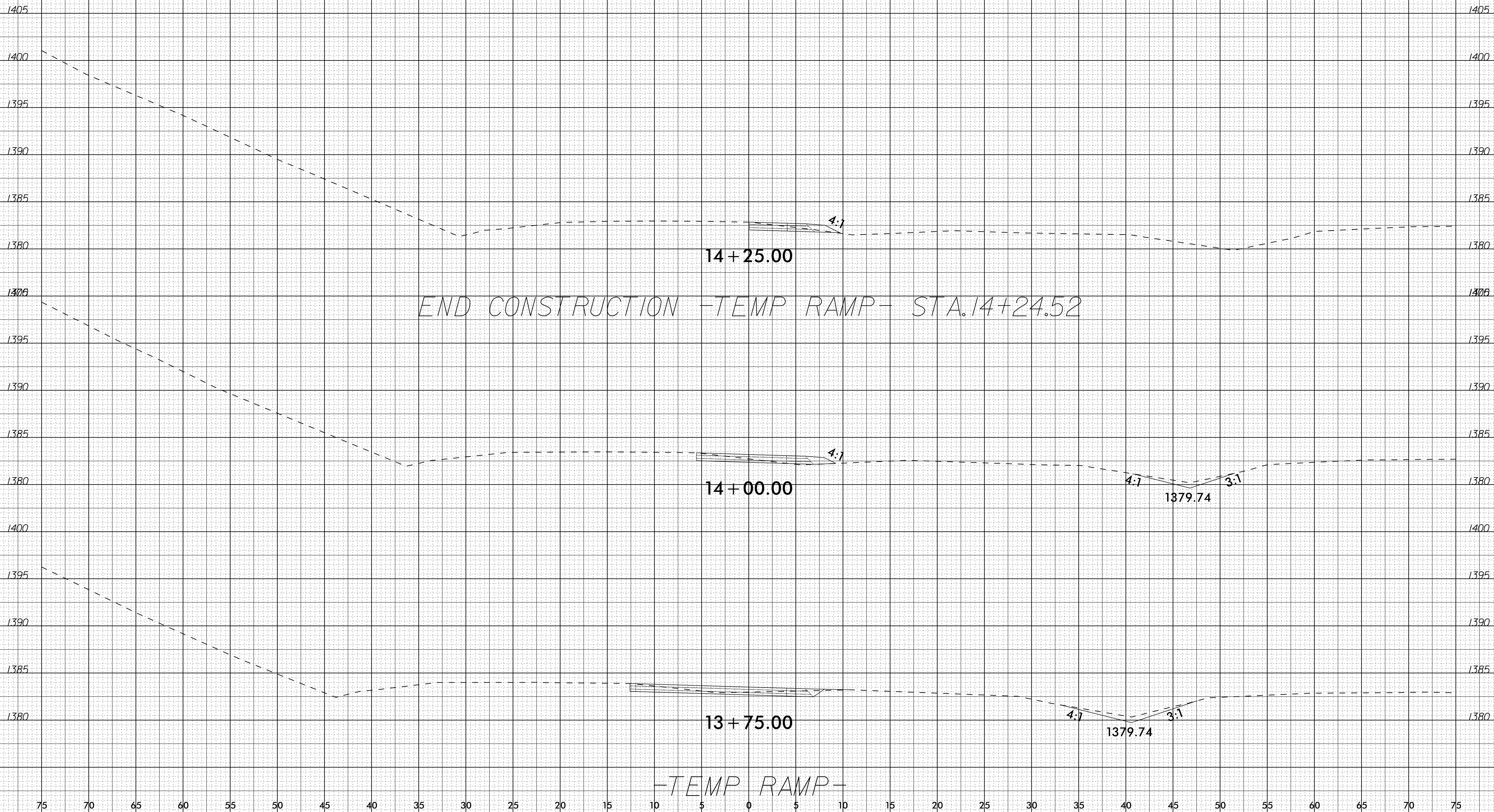


BEGIN CONSTRUCTION -TEMP RAMP- STA. 12+43.92

-TEMP RAMP-

08-NOV-2021 08:38
P:\Roadway\Corridor-Modeling\BR-0033_Pdij-xpl_TEMP_RAMP.dgn
D:\armani

75 70 65 60 55 50 45 40 35 30 25 20 15 10 5 0 5 10 15 20 25 30 35 40 45 50 55 60 65 70 75



75 70 65 60 55 50 45 40 35 30 25 20 15 10 5 0 5 10 15 20 25 30 35 40 45 50 55 60 65 70 75