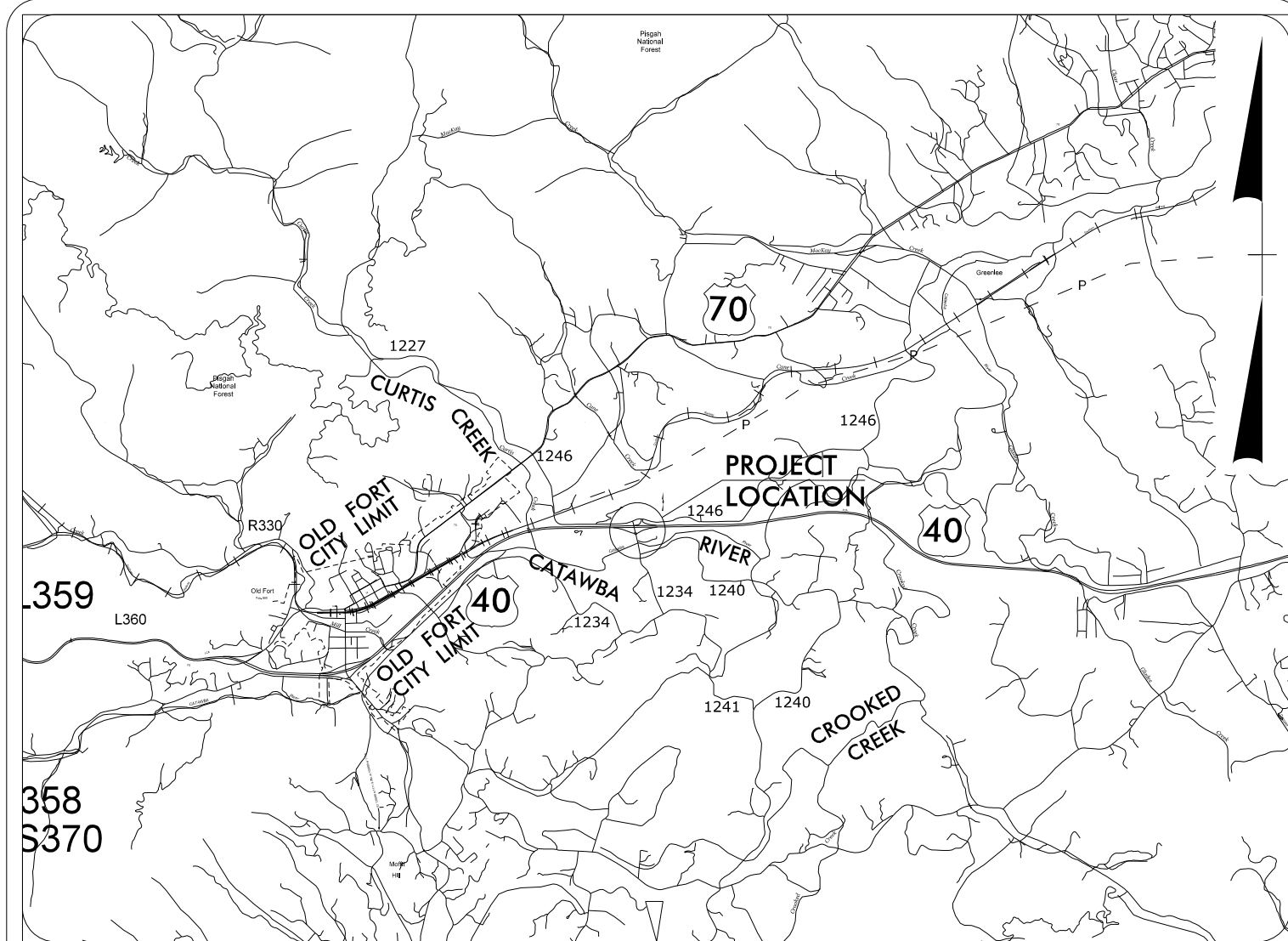


TIP PROJECT: BR-0033

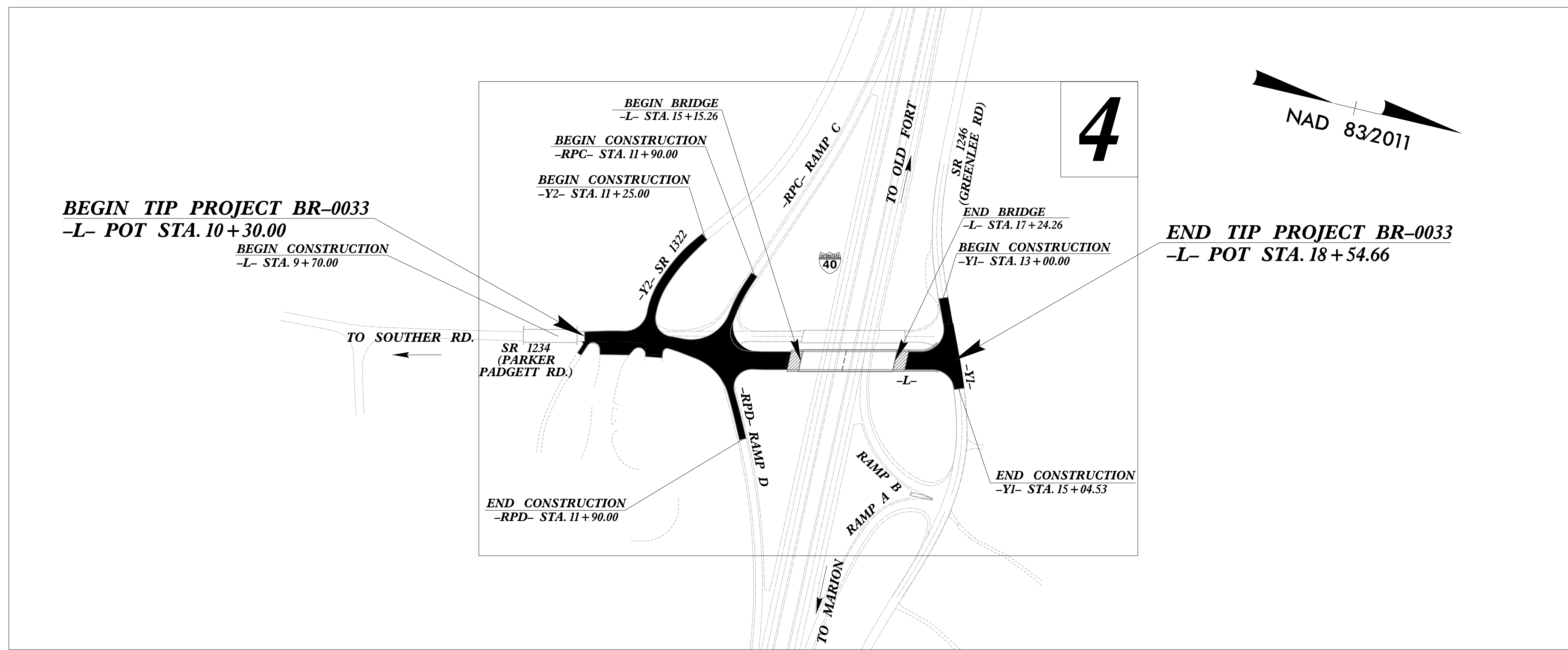


VICINITY MAP
NOT TO SCALE

STATE OF NORTH CAROLINA
DIVISION OF HIGHWAYS
PLAN FOR PROPOSED
HIGHWAY EROSION CONTROL
MCDOWELL COUNTY

**LOCATION: BRIDGE NO. 84 OVER I-40
ON SR 1234 (PARKER PADGETT ROAD)**

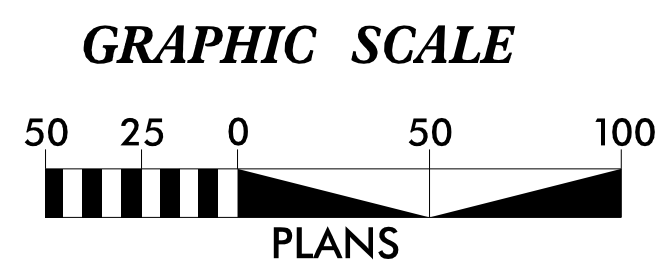
TYPE OF WORK: GRADING, DRAINAGE, PAVING, AND STRUCTURE



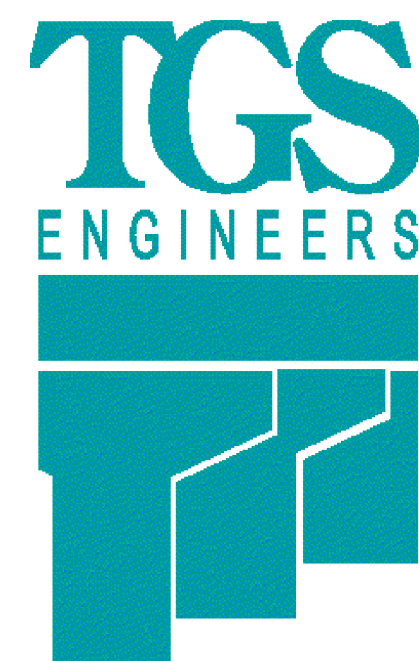
EROSION AND SEDIMENT CONTROL MEASURES

Std. #	Description	Symbol
1630.05	Temporary Silt Ditch	TD
1630.05	Temporary Diversion	TD
1605.01	Temporary Silt Fence	TSF
1606.01	Special Sediment Control Fence	SSCF
1622.01	Temporary Berms and Slope Drains	TBSD
1630.02	Silt Basin Type B	SB
1633.01	Temporary Rock Silt Check Type-A	TRSCA
1633.01	Temporary Rock Silt Check Type-A with Matting and Polyacrylamide (PAM)	TRSCA-PAM
1633.02	Temporary Rock Silt Check Type-B	TRSCB
	Wattle / Coir Fiber Wattle	W
	Wattle / Coir Fiber Wattle with Polyacrylamide (PAM)	W-PAM
1634.01	Temporary Rock Sediment Dam Type-A	TRSDA
1634.02	Temporary Rock Sediment Dam Type-B	TRSDB
1635.01	Rock Pipe Inlet Sediment Trap Type-A	RPISTRA
1635.02	Rock Pipe Inlet Sediment Trap Type-B	RPISTRB
1630.04	Stilling Basin	SB
1630.06	Special Stilling Basin	SSB
	Rock Inlet Sediment Trap:	
1632.01	Type A	A
1632.02	Type B	B
1632.03	Type C	C
	Skimmer Basin	SKB
	Tiered Skimmer Basin	TSKB
	Infiltration Basin	IB

THIS PROJECT CONTAINS
EROSION CONTROL PLANS
FOR CLEARING AND
GRUBBING PHASE OF
CONSTRUCTION.



**THESE EROSION AND SEDIMENT CONTROL PLANS COMPLY WITH
THE APPLICABLE REGULATIONS SET FORTH BY THE NCG-010000
GENERAL CONSTRUCTION PERMIT EFFECTIVE APRIL 1, 2019
AND ISSUED BY THE NORTH CAROLINA DEPARTMENT OF
ENVIRONMENTAL QUALITY DIVISION OF WATER RESOURCES.**



Prepared in the Office of:
TGS ENGINEERS
706 HILLSBOROUGH STREET
SUITE 200
RALEIGH, NC 27603

Designed by:
Ben Henegar, PE **3564**
NAME LEVEL III CERTIFICATION NO.

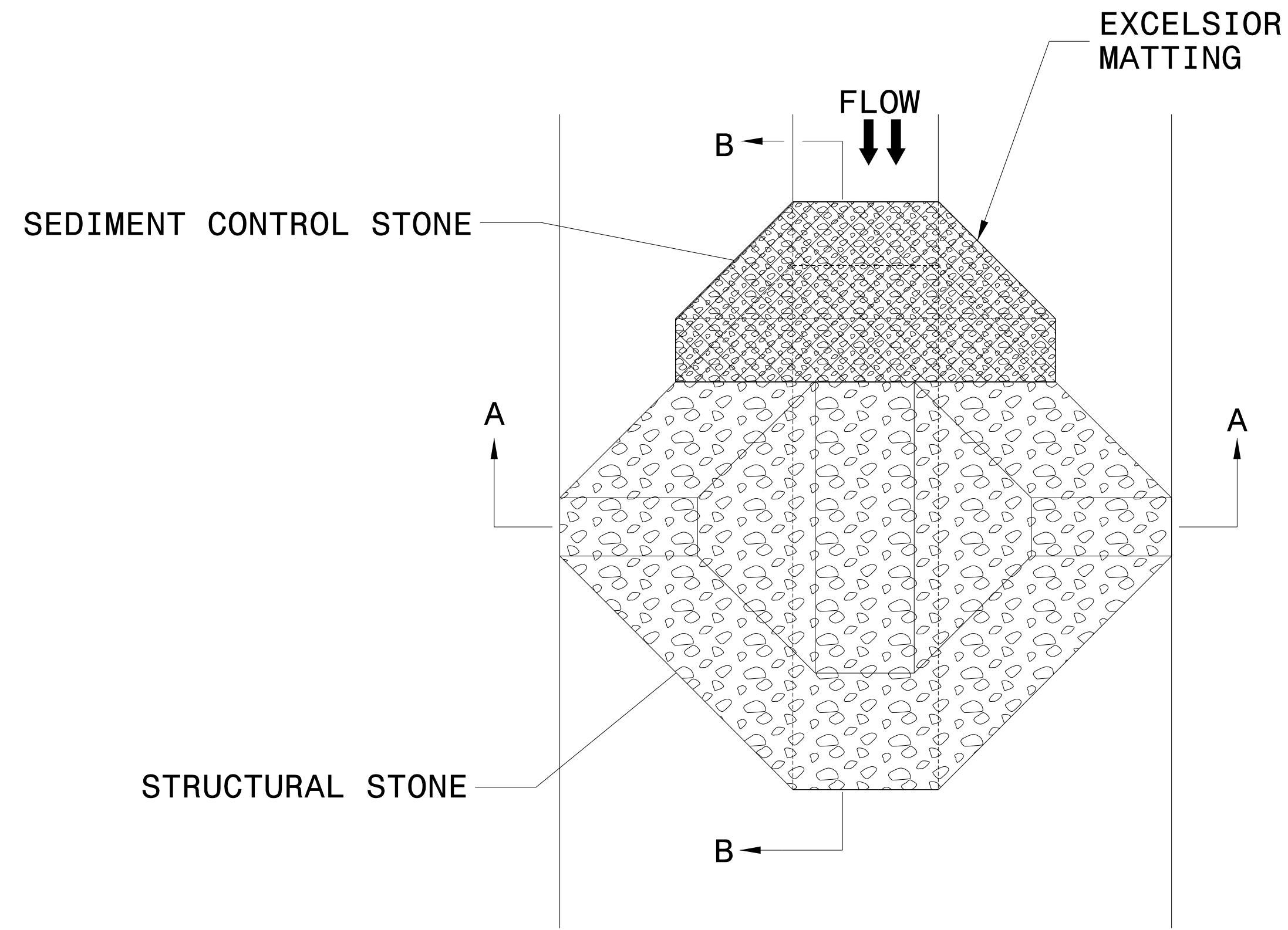
Roadway Standard Drawings

The following roadway english standards as appear in "Roadway Standard Drawings" - Roadway Design Unit - N. C. Department of Transportation - Raleigh, N. C., dated January 2018 and the latest revision thereto are applicable to this project and by reference hereby are considered a part of these plans.

1604.01	Railroad Erosion Control Detail	1632.01	Rock Inlet Sediment Trap Type A
1605.01	Temporary Silt Fence	1632.02	Rock Inlet Sediment Trap Type B
1606.01	Special Sediment Control Fence	1632.03	Rock Inlet Sediment Trap Type C
1607.01	Gravel Construction Entrance	1633.01	Temporary Rock Silt Check Type A
1622.01	Temporary Berms and Slope Drains	1633.02	Temporary Rock Silt Check Type B
1630.01	Riser Basin	1634.01	Temporary Rock Sediment Dam Type A
1630.02	Silt Basin Type B	1634.02	Temporary Rock Sediment Dam Type B
1630.03	Temporary Silt Ditch	1635.01	Rock Pipe Inlet Sediment Trap Type A
1630.04	Stilling Basin	1635.02	Rock Pipe Inlet Sediment Trap Type B
1630.05	Temporary Diversion	1640.01	Coir Fiber Baffle
1630.06	Special Stilling Basin	1645.01	Temporary Stream Crossing
1631.01	Matting Installation		

PROJECT REFERENCE NO. <i>BR-0033</i>	SHEET NO. <i>EC-2</i>
RW SHEET NO.	
ROADWAY DESIGN ENGINEER	HYDRAULICS ENGINEER

TEMPORARY ROCK SILT CHECK TYPE 'A' WITH EXCELSIOR MATTING AND POLYACRYLAMIDE (PAM)



PLAN

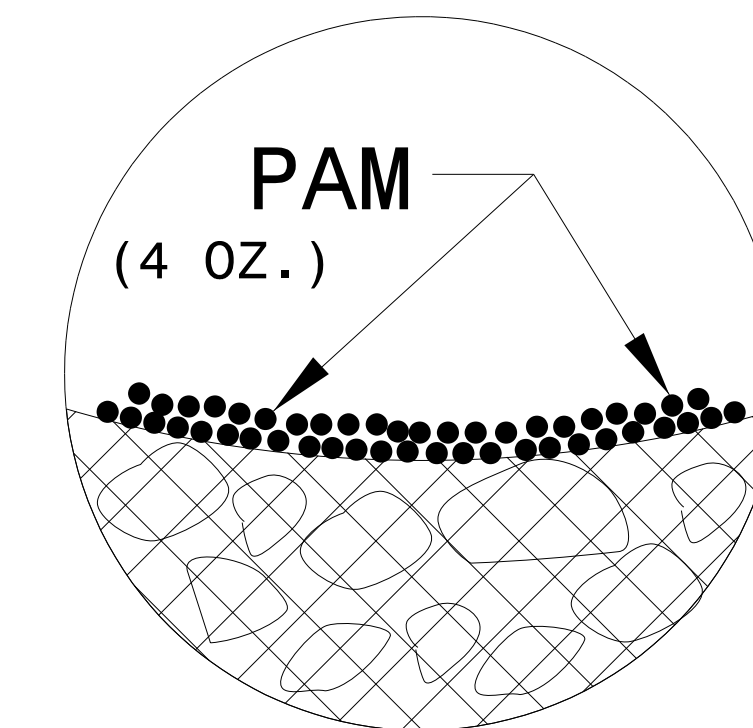
NOTES:

INSTALL TEMPORARY ROCK SILT CHECK TYPE A IN ACCORDANCE WITH ROADWAY STANDARD DRAWING NO. 1633.01.

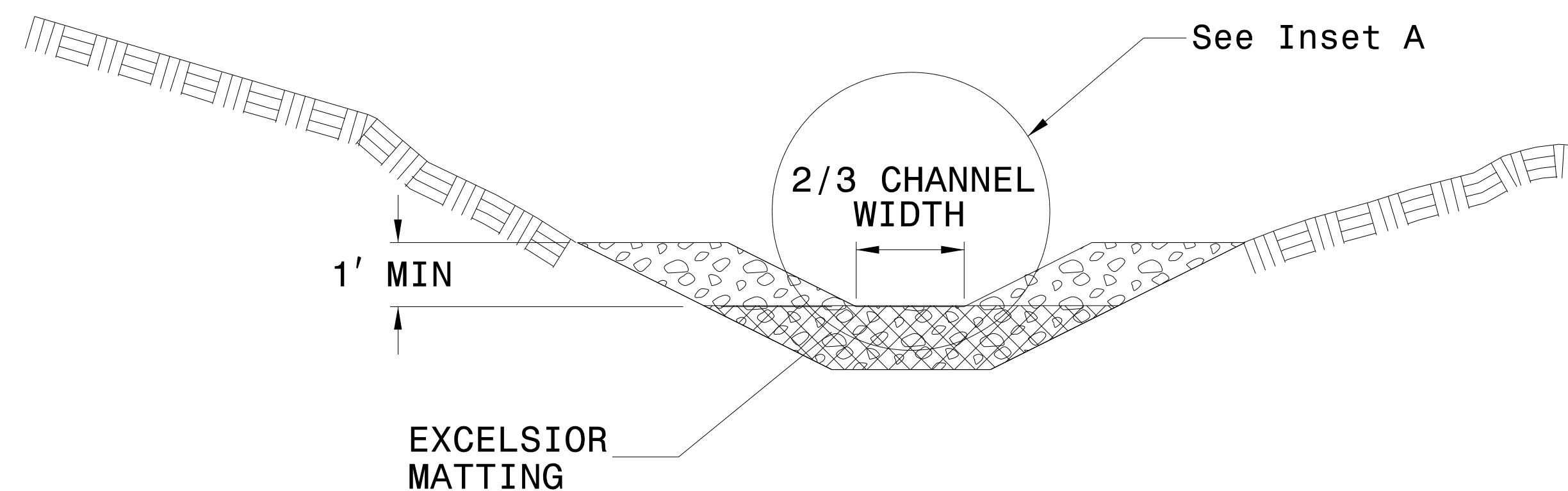
USE EXCELSIOR FOR MATTING MATERIAL AND ANCHOR MATTING SECTION AT TOP AND BOTTOM WITH CLASS B STONE.

PRIOR TO POLYACRYLAMIDE (PAM) APPLICATION, OBTAIN A SOIL SAMPLE FROM PROJECT LOCATION, AND FROM OFFSITE MATERIAL, AND ANALYZE FOR APPROPRIATE PAM FLOCCULANT TO BE APPLIED TO EACH ROCK SILT CHECK.

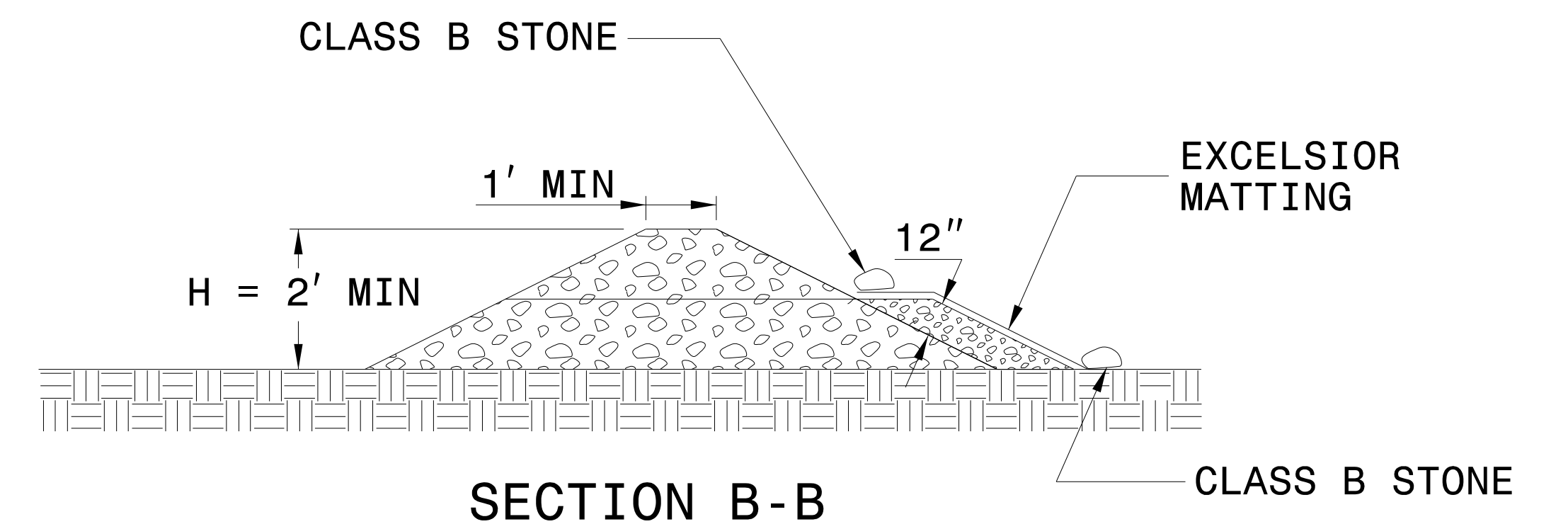
INITIALLY APPLY 4 OUNCES OF POLYACRYLAMIDE (PAM) TO TOP OF MATTING SECTION AND AFTER EVERY RAINFALL EVENT THAT EQUALS OR EXCEEDS 0.50 INCHES.



INSET A



SECTION A-A



SECTION B-B

NOT TO SCALE

DIVISION OF HIGHWAYS
STATE OF NORTH CAROLINA

PROJECT REFERENCE NO. <i>BR-0033</i>	SHEET NO. <i>EC-3A</i>
ROADWAY DESIGN ENGINEER	HYDRAULICS ENGINEER

SOIL STABILIZATION TIMEFRAMES


<i>SITE DESCRIPTION</i>	<i>STABILIZATION TIME</i>	<i>TIMEFRAME EXCEPTIONS</i>
PERIMETER DIKES, SWALES, DITCHES AND SLOPES	7 DAYS	NONE
HIGH QUALITY WATER (HQW) ZONES	7 DAYS	NONE
SLOPES STEEPER THAN 3:1	7 DAYS	IF SLOPES ARE 10' OR LESS IN LENGTH AND ARE NOT STEEPER THAN 2:1, 14 DAYS ARE ALLOWED.
SLOPES 3:1 OR FLATTER	14 DAYS	7 DAYS FOR SLOPES GREATER THAN 50' IN LENGTH.
ALL OTHER AREAS WITH SLOPES FLATTER THAN 4:1	14 DAYS	NONE, EXCEPT FOR PERIMETERS AND HQW ZONES.

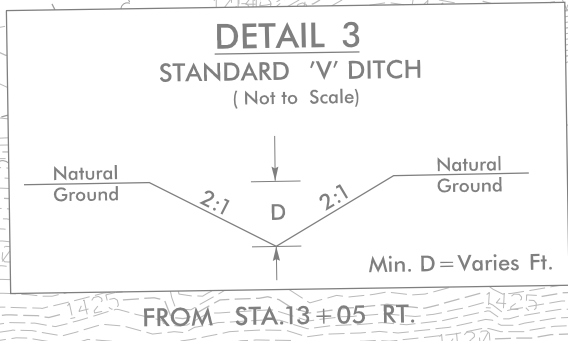
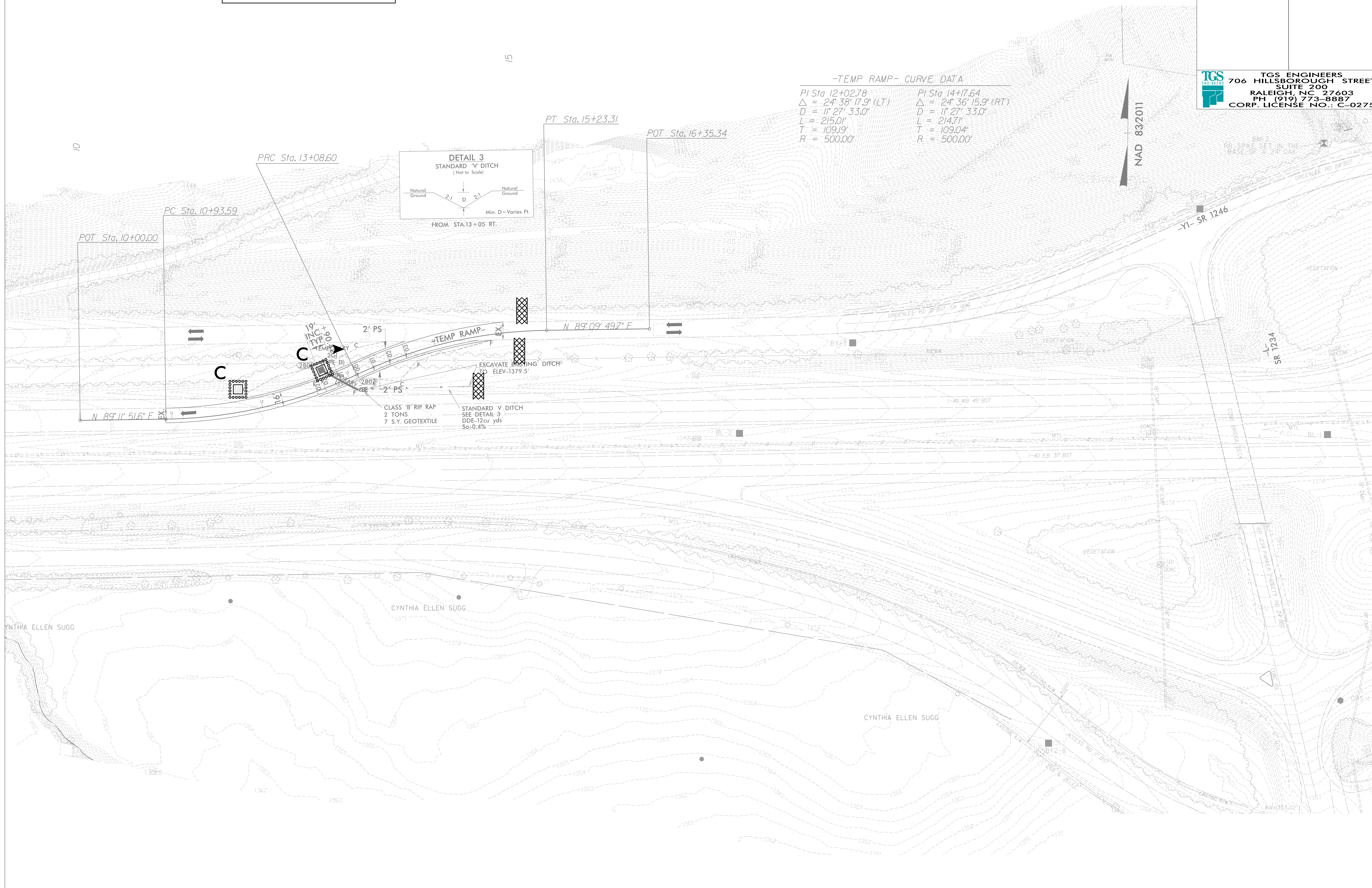
NOTE:
PLACE TEMPORARY ROCK SEDIMENT DAMS TYPE - B
AND TEMPORARY ROCK SILT CHECKS TYPE - A AT
DRAINAGE OUTLETS.

TRSC-A's, TRSC-B, AND RIST-C ON EXISTING
INLET ARE FOR C&G AND FINAL EC PHASES
ON CONST. SHEET 2B-1

RIST-C ON TEMP. 2GI (2B01) IS FOR
FINAL EC PHASE ON CONST. SHEET 2B-1

McDowell County Bridge #580084 DETOUR

PROJECT REFERENCE NO. BR-0033	SHEET NO. EC-4A/CONST.2B-1
RW SHEET NO.	HYDRAULICS ENGINEER
ROADWAY DESIGN ENGINEER	
 TGS ENGINEERS 706 HILLSBOROUGH STREET SUITE 200 RALEIGH, NC 27603 PH (919) 773-8887 CORP. LICENSE NO.: C-0275	



-TEMP RAMP- CURVE DATA

PI Sta 12+02.78	PI Sta 14+17.64
$\Delta = 24^\circ 38' 17.9''$ (LT)	$\Delta = 24^\circ 36' 15.9''$ (RT)
$D = 11' 27' 33.0''$	$D = 11' 27' 33.0''$
$L = 215.0'$	$L = 214.7'$
$T = 109.19'$	$T = 109.04'$
$R = 500.00'$	$R = 500.00'$

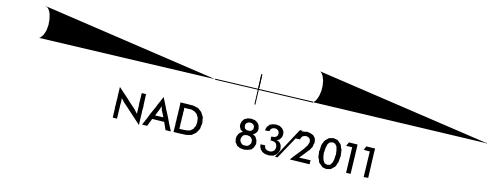
NOTE:
PLACE TEMPORARY ROCK SEDIMENT DAMS TYPE - B AND TEMPORARY ROCK SILT CHECKS TYPE - A AT DRAINAGE OUTLETS.

IN LIEU OF ROCK INLET SEDIMENT TRAP TYPE C, UTILIZE FABRIC INSERT INLET PROTECTION DEVICES IN AREAS WHERE WATER MAY POND ON ROAD OPEN TO LIVE TRAFFIC.

Place Matting for Erosion Control on Slope as Work Allows.
-L- Sta. 10+50 to 11+44 LT EST. 176 SY

INSTALL COIR FIBER MATTING IN THE PROPOSED DITCH LINE
-L- STA 10+50 TO 11+50 LT EST. 85 SY

**McDowell County
Bridge #580084**



PROJECT REFERENCE NO. BR-0033	SHEET NO. EC-5/CONST.4
RW SHEET NO. ROADWAY DESIGN ENGINEER	HYDRAULICS ENGINEER
TGS ENGINEERS 706 HILLSBOROUGH STREET SUITE 200 RALEIGH, NC 27603 PH (919) 773-8887 CORP. LICENSE NO.: C-0275	

BEGIN TIP PROJECT BR-0033
-L- STA. 10+30.00

BEGIN CONSTRUCTION
-L- STA. 9+70.00

-L- POT Sta. 9+00.00

-L- PC Sta. 10+98.33

-Y2- POT Sta. 13+92.71
-L- POC STA. 11+76.23
-L- PRC Sta. 12+68.53

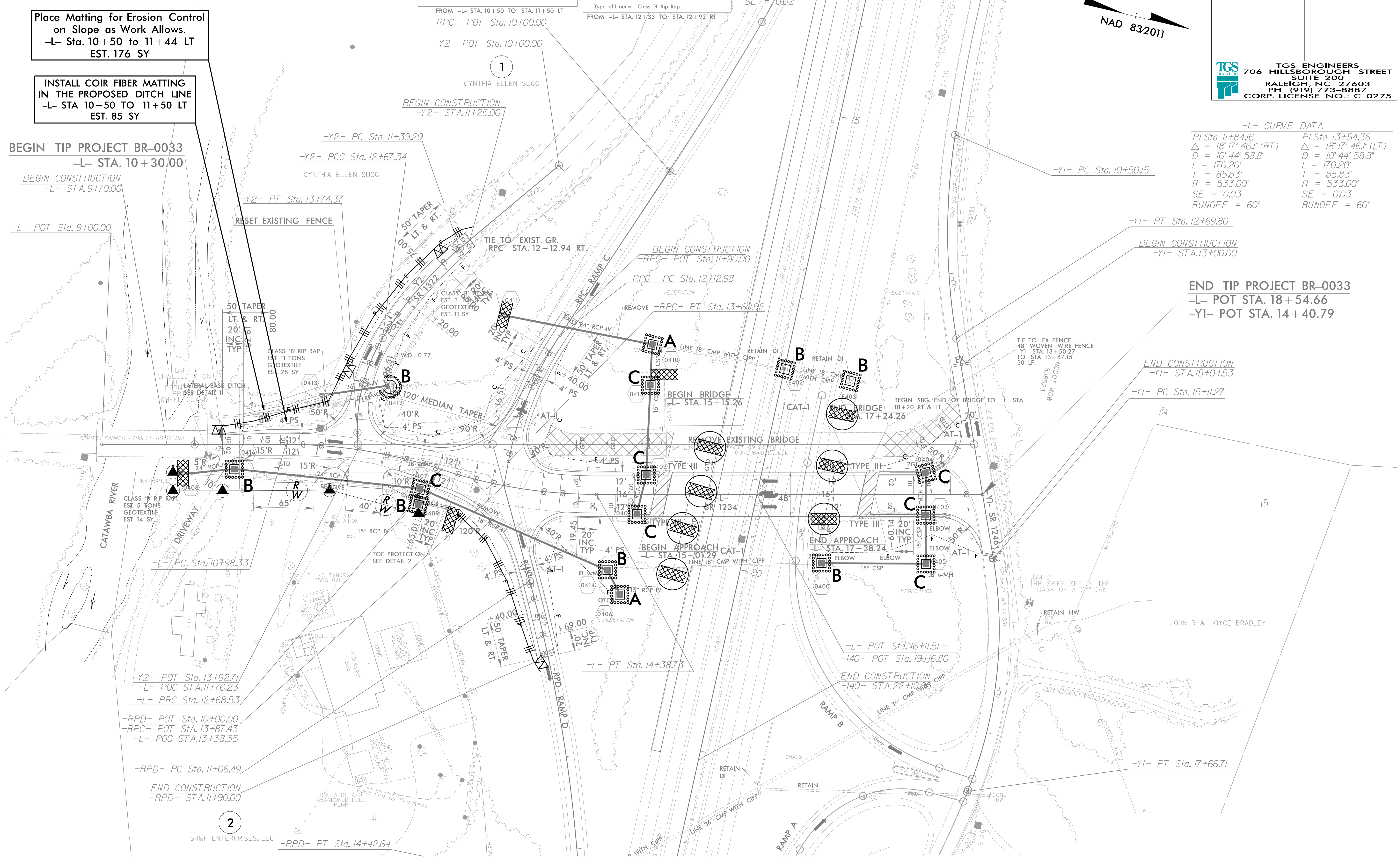
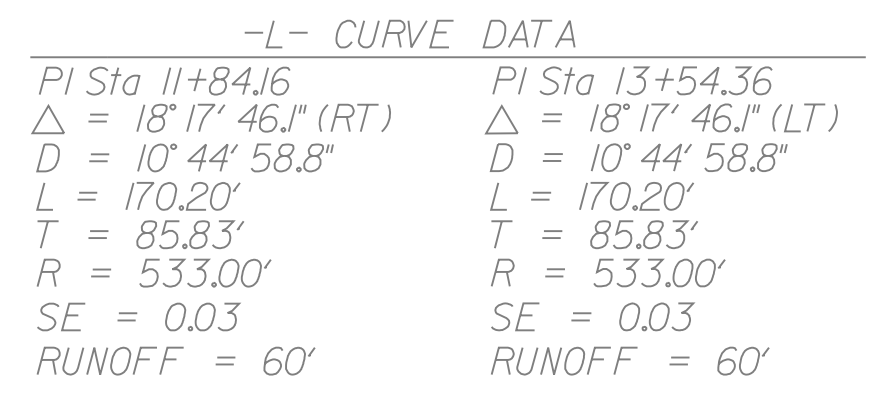
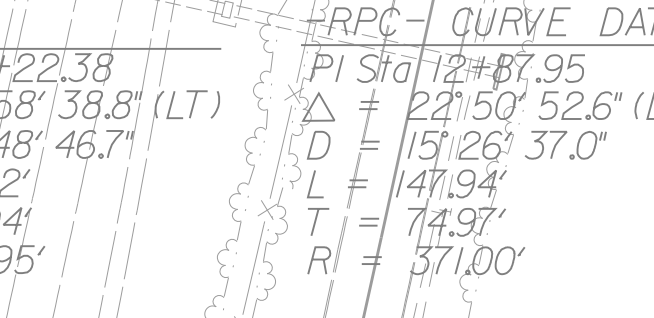
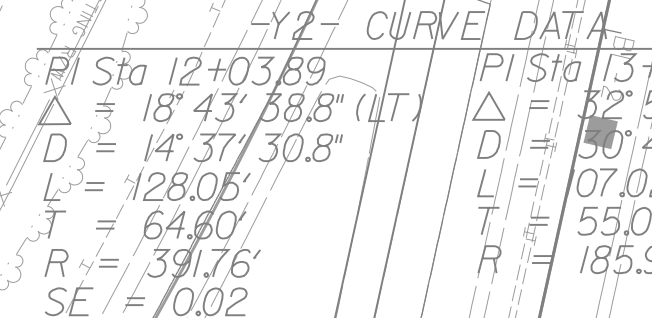
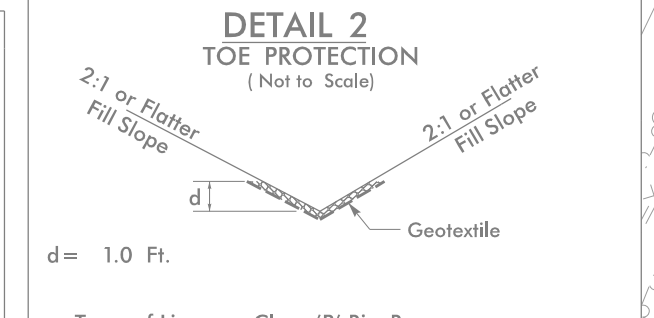
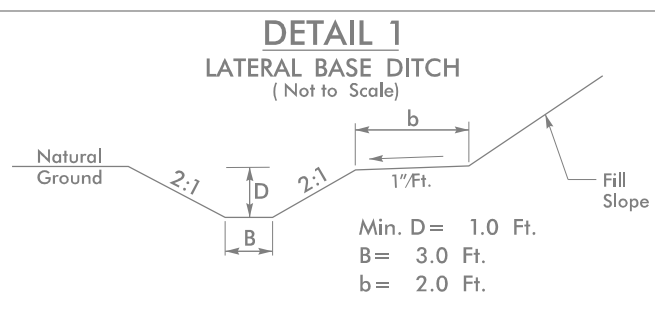
-RPD- POT Sta. 10+00.00
-RPC- POT Sta. 13+87.43
-L- POC STA. 13+38.35

-RPD- PC Sta. 11+06.49

END CONSTRUCTION
-RPD- STA. 11+90.00

2
SH&H ENTERPRISES, LLC

-RPD- PT Sta. 14+42.64



END TIP PROJECT BR-0033
-L- POT STA. 18+54.66
-Y1- POT STA. 14+40.79

END CONSTRUCTION
-Y1- STA. 15+04.53

-Y1- PC Sta. 15+11.27

-Y1- PT Sta. 17+66.71