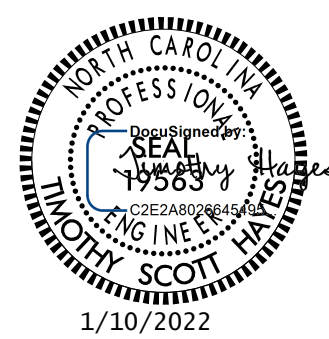


TIP NO.	SHEET NO.
BR-0033	PMP-1
APPROVED: _____	
DATE: _____	
SEAL	
	

**STATE OF NORTH CAROLINA
DEPARTMENT OF TRANSPORTATION**

**PAVEMENT MARKING PLAN
MCDOWELL COUNTY**

**LOCATION: REPLACE BRIDGE NO. 84 ON
SR 1234 (PARKER PADGETT RD) OVER I-40**

TIP PROJECT: BR-0033

CONTRACT: C204672

PAVEMENT MARKING SCHEDULE

SYMBOL	DESCRIPTION	FINAL PAVEMENT MARKING
V1		POLYUREA, WHITE EDGELINE (4", 20 MIL)
V2		POLYUREA, SOLID LANE LINE (4", 20 MIL)
V4		POLYUREA, 3 FT.- 9 FT./SP WHITE MINISKIP (4", 20 MIL)
V5		POLYUREA, 2 FT.- 6 FT./SP WHITE MINISKIP (4", 20 MIL)
V13		POLYUREA, YELLOW DOUBLE CENTER (4", 20 MIL)
V20		POLYUREA, WHITE EDGE (6", 20 MIL)
V22		POLYUREA, 10 FT. WHITE SKIP (6", 20 MIL)
V30		POLYUREA, YELLOW EDGELINE (6", 20 MIL)
V50		POLYUREA, WHITE GORELINE (12", 20 MIL)
C42		COLD-APPLIED PLASTIC, YELLOW DIAGONAL (8")
C61		COLD-APPLIED PLASTIC, WHITE STOP BAR (24")
C70		COLD-APPLIED PLASTIC, LEFT TURN ARROW
C80		COLD-APPLIED PLASTIC, WRONG-WAY RAMP ARROW

GENERAL NOTES

THE FOLLOWING GENERAL NOTES APPLY AT ALL TIMES FOR THE DURATION OF THE CONSTRUCTION PROJECT, EXCEPT WHEN OTHERWISE NOTED IN THE PLAN, OR DIRECTED BY THE ENGINEER.

A) INSTALL PAVEMENT MARKINGS AND PAVEMENT MARKERS ON THE FINAL SURFACE AS FOLLOWS:

ROAD NAME	MARKING	MARKER
-L-, SR 1234	POLYUREA	SNOWPLOWABLES
-I40CL-	POLYUREA	SNOWPLOWABLES
SYMBOLS	COLD-APPLIED	NONE
WRONG WAY	COLD-APPLIED	SNOWPLOWABLES

B) TIE PROPOSED PAVEMENT MARKING LINES TO EXISTING PAVEMENT MARKING LINES.

C) REMOVE/REPLACE ANY CONFLICTING/DAMAGED PAVEMENT MARKINGS AND MARKERS.

D) REMOVE ALL RESIDUE AND SURFACE LAITANCE BY ACCEPTABLE METHODS ON CONCRETE BRIDGE DECKS PRIOR TO PLACING POLYUREA PAVEMENT MARKING MATERIAL.

ROADWAY STANDARD DRAWING

THE FOLLOWING ROADWAY STANDARDS AS APPEAR IN "ROADWAY STANDARD DRAWINGS" - PROJECT SERVICES UNIT - N.C. DEPARTMENT OF TRANSPORTATION - RALEIGH, N.C., DATED JANUARY 2018 ARE APPLICABLE TO THIS PROJECT AND BY REFERENCE HEREBY ARE CONSIDERED A PART OF THESE PLANS:

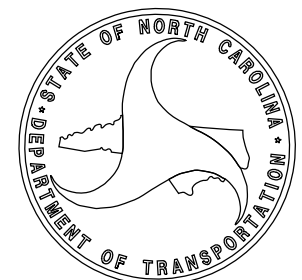
STD. NO.	TITLE
1205.01	PAVEMENT MARKINGS - LINE TYPES AND OFFSETS
1205.02	PAVEMENT MARKINGS - TWO-LANE AND MULTILANE ROADWAYS
1205.04	PAVEMENT MARKINGS - INTERSECTIONS
1205.03	PAVEMENT MARKINGS - EXIT AND ENTRANCE RAMP
1205.05	PAVEMENT MARKINGS - TURN LANES
1205.08	PAVEMENT MARKINGS - SYMBOLS AND WORD MESSAGES
1205.09	PAVEMENT MARKINGS - PAINTED ISLANDS
1205.12	PAVEMENT MARKINGS - BRIDGES
1250.01	RAISED PAVEMENT MARKERS - INSTALLATION SPACING
1253.01	RAISED PAVEMENT MARKERS - SNOWPLOWABLE
1261.01	GUARDRAIL AND BARRIER DELINEATOR INSTALLATION SPACING
1261.02	GUARDRAIL AND BARRIER DELINEATOR TYPES AND MOUNTING
1262.01	GUARDRAIL END DELINEATION

INDEX

SHEET NO.	DESCRIPTION
PMP-1	TITLE SHEET AND NOTES
PMP-2	PAVEMENT MARKING DETAIL & SCHEDULE

PLAN PREPARED FOR: NCDOT

KELVIN JORDAN _____ SIGNING & DELINEATION REGIONAL ENGINEER

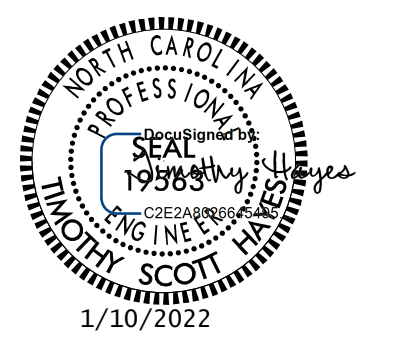


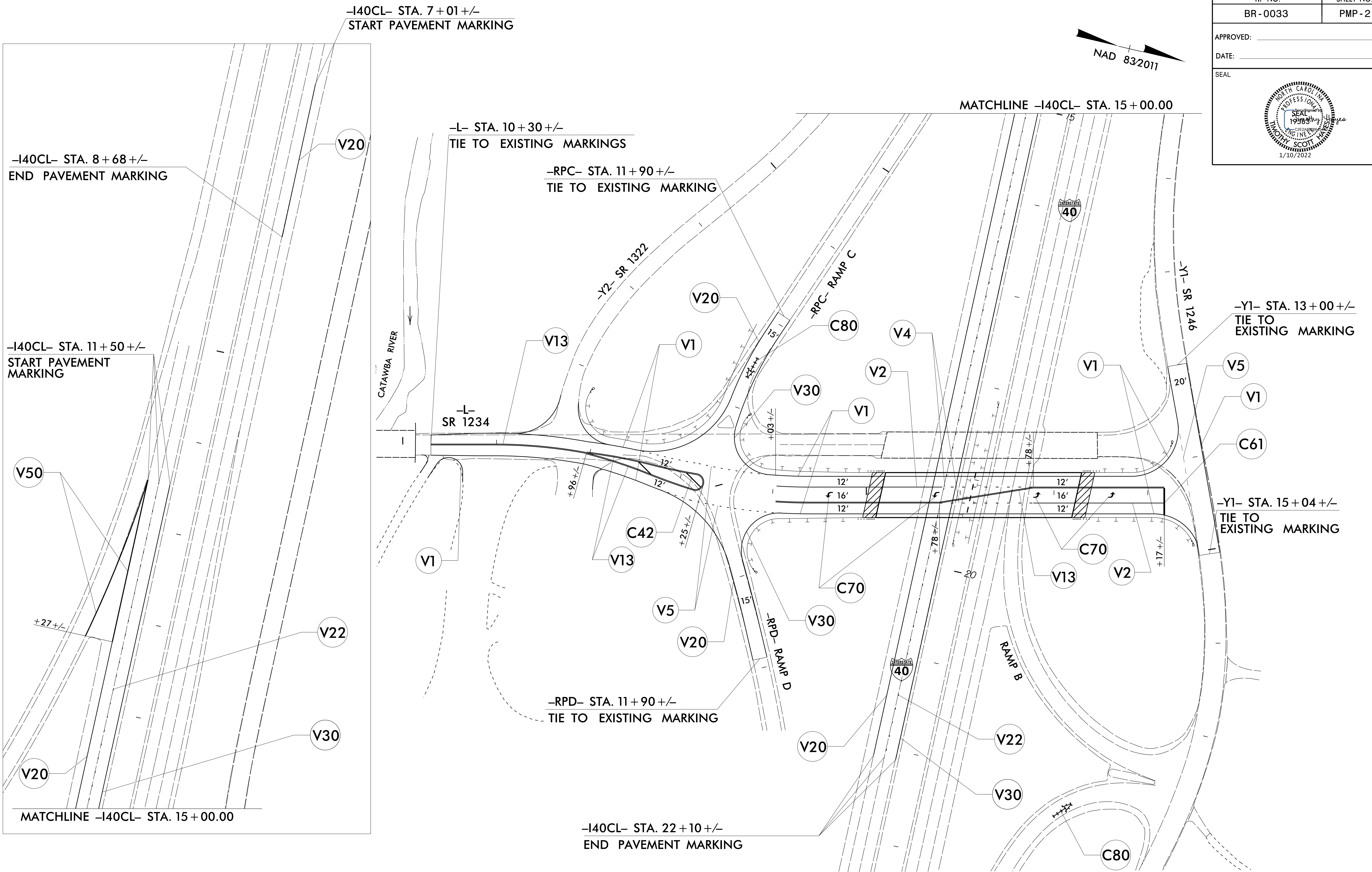
PLAN PREPARED BY: ATCS PLC

KIM KOIVUNIEMI, PE PROJECT ENGINEER
FELICIA BARHAM, EI PROJECT DESIGN ENGINEER

ATCS® 100 REGENCY FOREST DRIVE, SUITE 130
CARY, NORTH CAROLINA 27518
919-341-9418 <http://www.atcsplc.com/>

ENGINEERING | PLANNING | SURVEYING | ENVIRONMENTAL

TIP NO.	SHEET NO.
BR-0033	PMP-2
APPROVED: _____	
DATE: _____	
SEAL	
	



-140CL- STA. 8+68+/-
END PAVEMENT MARKING

-140CL- STA. 11+50+/-
START PAVEMENT MARKING

-140CL- STA. 7+01+/-
START PAVEMENT MARKING

-L- STA. 10+30+/-
TIE TO EXISTING MARKINGS

-RPC- STA. 11+90+/-
TIE TO EXISTING MARKING

MATCHLINE -140CL- STA. 15+00.00

-Y1- STA. 13+00+/-
TIE TO EXISTING MARKING

-Y1- STA. 15+04+/-
TIE TO EXISTING MARKING

-RPD- STA. 11+90+/-
TIE TO EXISTING MARKING

-140CL- STA. 22+10+/-
END PAVEMENT MARKING

MATCHLINE -140CL- STA. 15+00.00

INDEX

**PAVEMENT MARKING DETAIL
AND SCHEDULE**