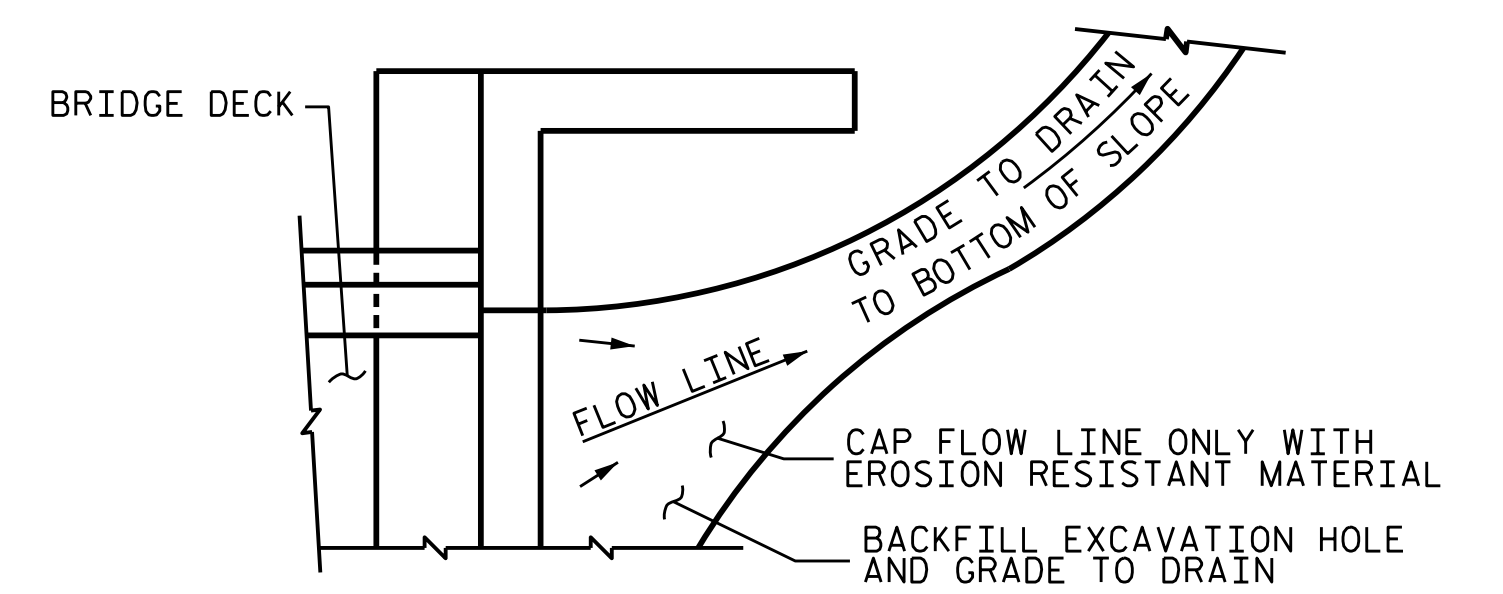


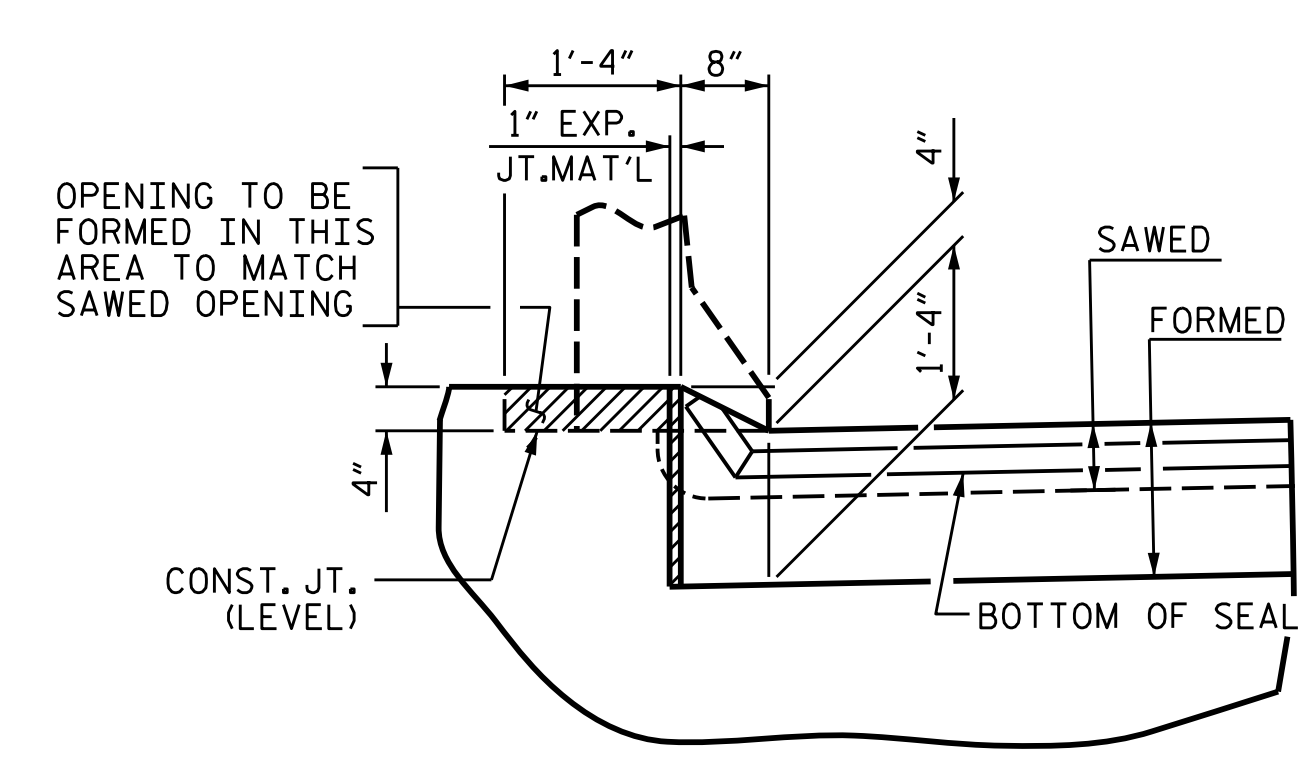
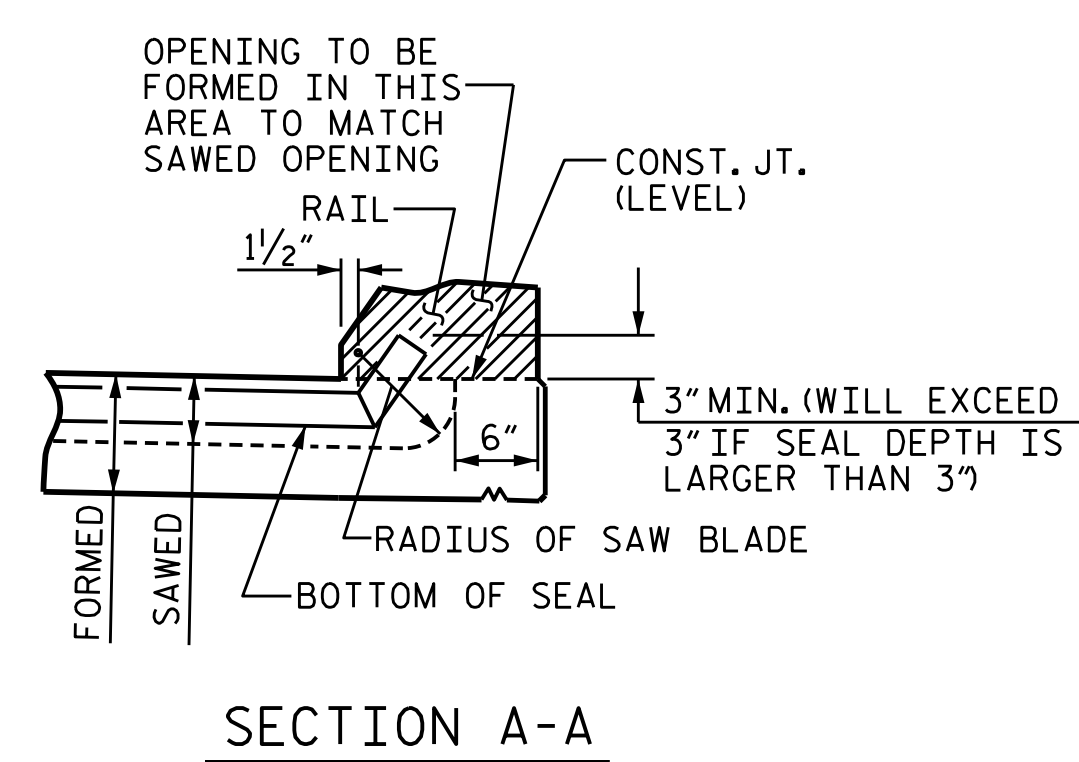
TEMPORARY BERM AND SLOPE DRAIN DETAILS
(TO BE USED WHEN SHOULDER BERM GUTTER IS REQUIRED)



NOTE: IF THE APPROACH SLAB IS NOT CONSTRUCTED IMMEDIATELY AFTER THE BACKFILLING OF THE END BENT EXCAVATION, GRADE TO DRAIN TO THE BOTTOM OF THE SLOPE AND PROVIDE EROSION RESISTANT MATERIAL, SUCH AS FIBERGLASS ROVING OR AS DIRECTED BY THE ENGINEER TO PREVENT SOIL EROSION AND TO PROTECT THE AREA ADJACENT TO THE STRUCTURE. THE CONTRACTOR WILL BE REQUIRED TO REMOVE THESE MATERIALS PRIOR TO CONSTRUCTION OF THE APPROACH SLAB.

ELASTOMERIC CONCRETE	
END BENT NO.	ELASTOMERIC CONCRETE * (CU. FT.)
1	8.5
2	8.5
TOTAL	17.0

* BASED ON THE MINIMUM BLOCKOUT SHOWN.



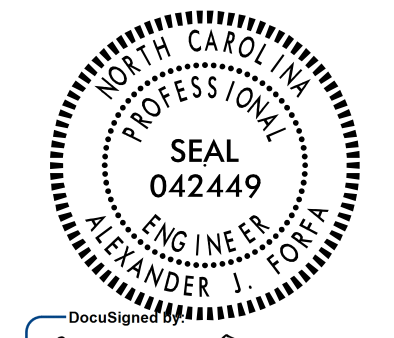
SECTION B-B
JOINT SEAL DETAILS @ END BENT

FOAM JOINT SEAL TO BE CUT, HEAT WELDED AND TURNED UP PARALLEL TO SLOPED FACE OF THE BARRIER RAIL.
THE JOINT SHALL BE SAWED PRIOR TO THE CASTING OF THE BARRIER RAIL.

ASSEMBLED BY :	M. SPENCER	DATE :	07/21
CHECKED BY :	A. FORFA	DATE :	07/21
DRAWN BY :	FCJ 11/88	REV. 6/13	MAA/GM
CHECKED BY :	ARB 11/88	REV. 12/17	MAA/THC
		REV. 5/18	MAA/THC



8000 Regency Parkway
Suite 175
Cary, NC 27518
984-275-2490
benesch.com
NC License No. F-1320



DOCUMENT NOT CONSIDERED FINAL UNLESS ALL SIGNATURES COMPLETED

PROJECT NO. BR-0033
McDOWELL COUNTY
STATION: 16+11.51 -L-

SHEET 2 OF 2

REVISIONS						SHEET NO.
NO.	BY:	DATE:	NO.	BY:	DATE:	S-32
1			3			TOTAL SHEETS
2			4			32

STATE OF NORTH CAROLINA
DEPARTMENT OF TRANSPORTATION
RALEIGH
STANDARD
BRIDGE APPROACH
SLAB DETAILS