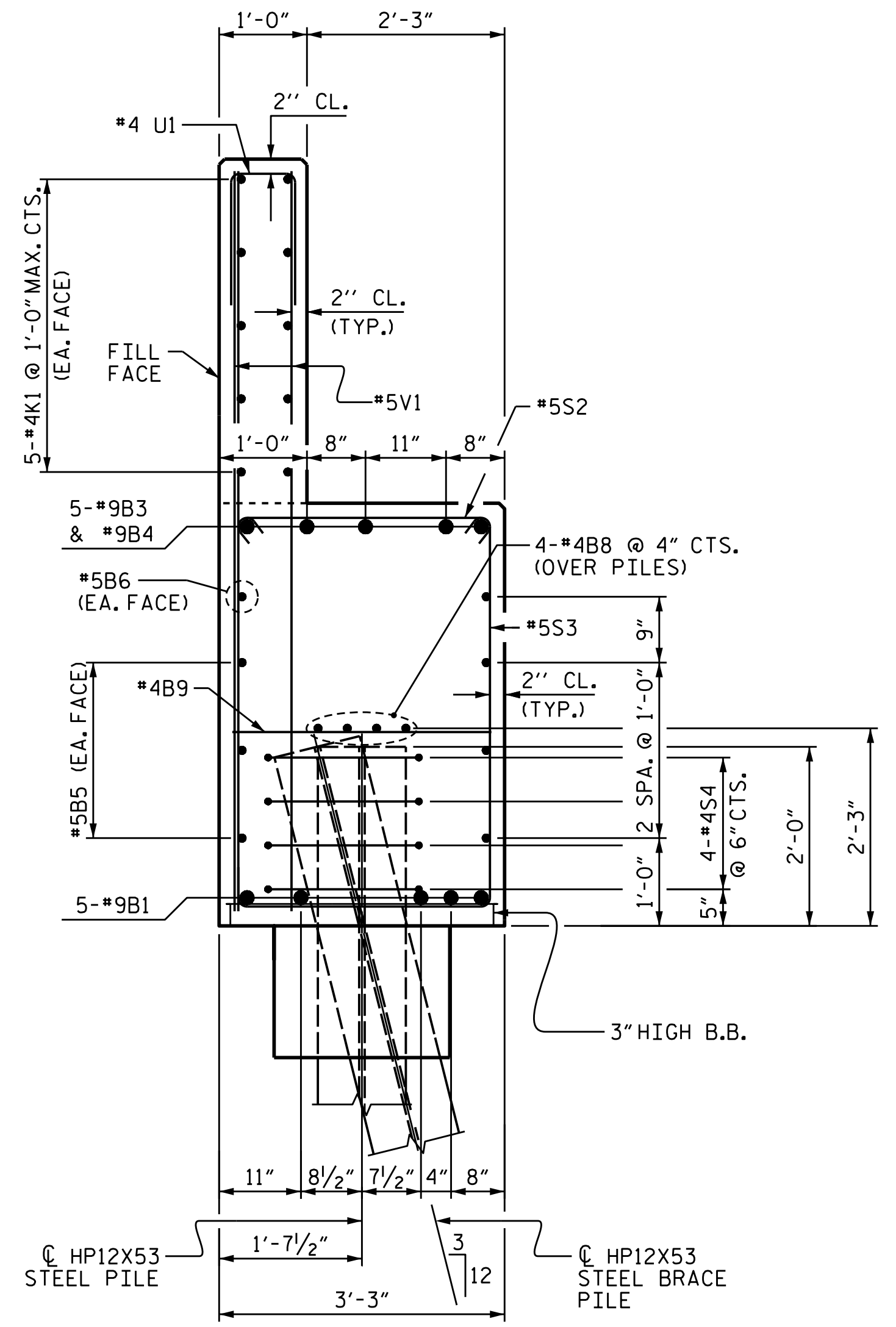
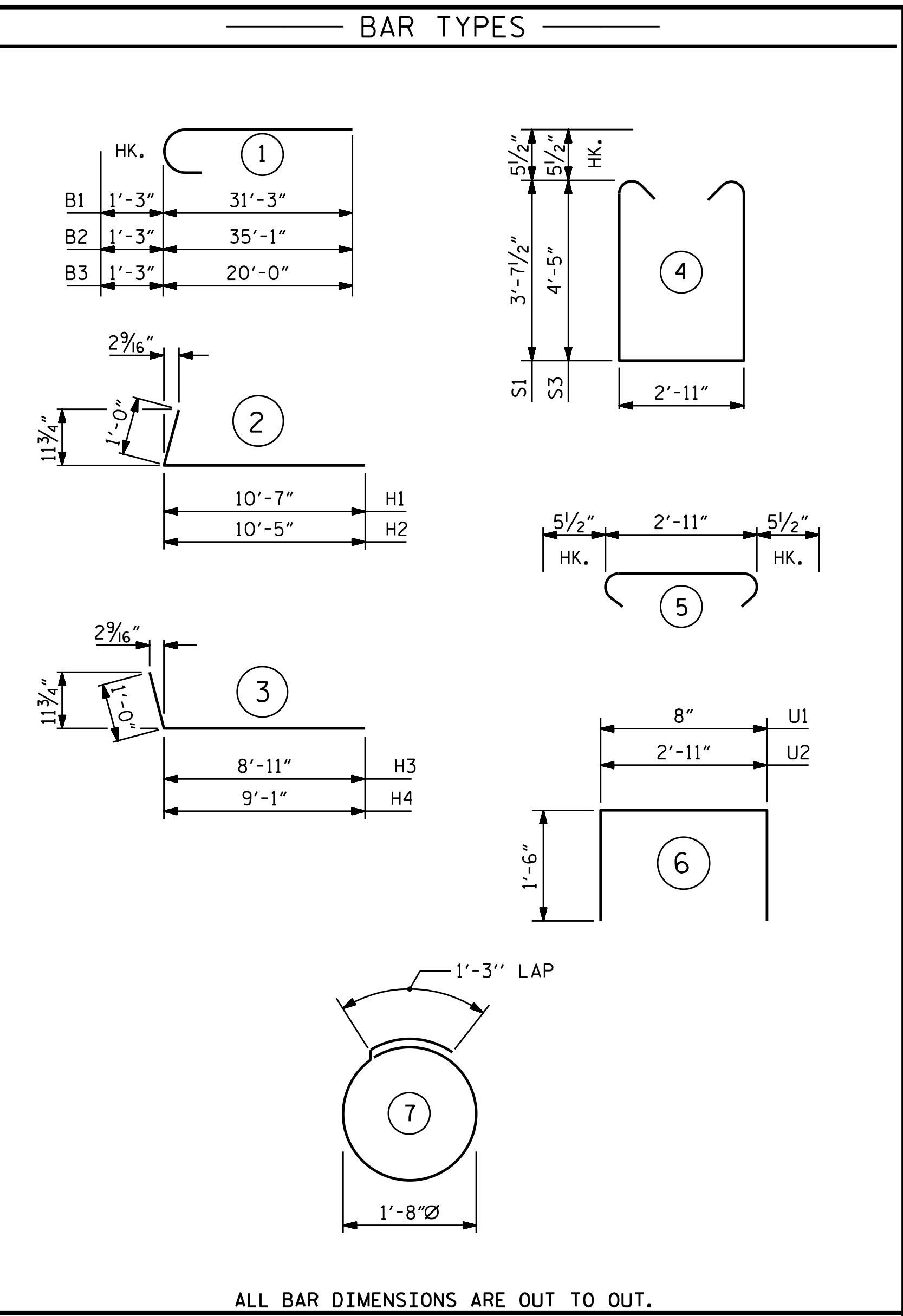


SECTION A-A

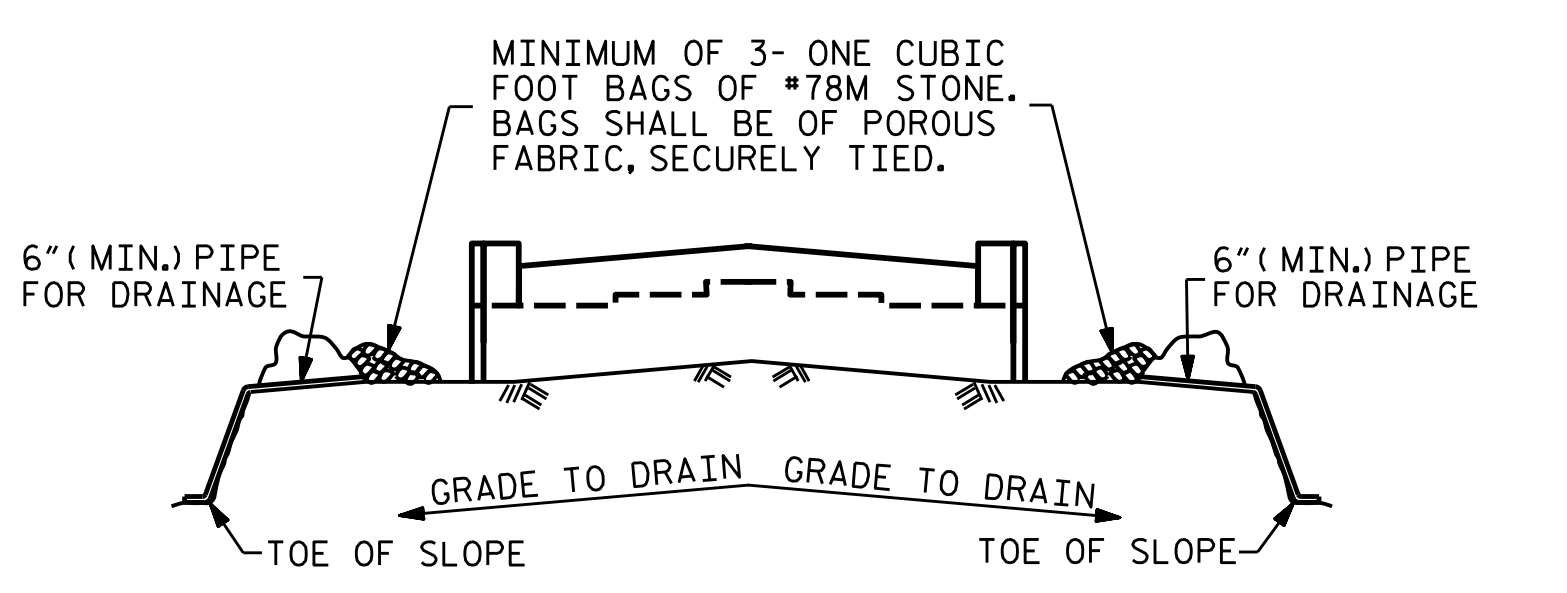


SECTION B-B

BILL OF MATERIAL					
END BENT #1					
BAR	NO.	SIZE	TYPE	LENGTH	WEIGHT
B1	10	#9	1	32'-6"	1105
B2	5	#9	1	36'-4"	618
B3	5	#9	1	21'-3"	361
B4	5	#9	STR.	16'-2"	275
B5	6	#5	STR.	58'-4"	365
B6	2	#5	STR.	26'-3"	55
B7	5	#4	STR.	11'-2"	37
B8	8	#4	STR.	30'-5"	163
B9	16	#4	STR.	2'-11"	31
H1	21	#5	2	11'-7"	254
H2	21	#5	2	11'-5"	250
H3	19	#5	3	9'-11"	197
H4	19	#5	3	10'-1"	200
K1	20	#4	STR.	30'-5"	406
K2	8	#4	STR.	3'-7"	19
S1	48	#5	4	11'-1"	555
S2	98	#5	5	3'-10"	392
S3	50	#5	4	12'-8"	661
S4	36	#4	7	6'-6"	156
U1	51	#4	6	3'-8"	125
U2	8	#4	6	5'-11"	32
V1	102	#5	STR.	7'-2"	762
V2	10	#5	STR.	9'-10"	103
V3	4	#5	STR.	9'-8"	40
V4	4	#5	STR.	9'-6"	40
V5	4	#5	STR.	9'-4"	39
V6	4	#5	STR.	9'-2"	38
V7	4	#5	STR.	9'-0"	38
V8	12	#5	STR.	8'-10"	111
V9	4	#5	STR.	8'-7"	36
V10	4	#5	STR.	8'-5"	35
V11	4	#5	STR.	8'-2"	34
V12	4	#5	STR.	8'-0"	33
REINFORCING STEEL					7,566 LBS.
CLASS "A" CONCRETE					
POUR #1 (CAP, LOWER PART OF WINGS & COLLARS)					36.6 C.Y.
POUR #2 (BACKWALL & UPPER PART OF WINGS)					11.9 C.Y.
TOTAL CLASS "A" CONCRETE					48.5 C.Y.
PILE DRIVING EQUIPMENT SETUP FOR 12X53 STEEL PILES					EA. 9
HP12X53 STEEL PILES					9
NO.					9
LIN. FT.					383



ALL BAR DIMENSIONS ARE OUT TO OUT.



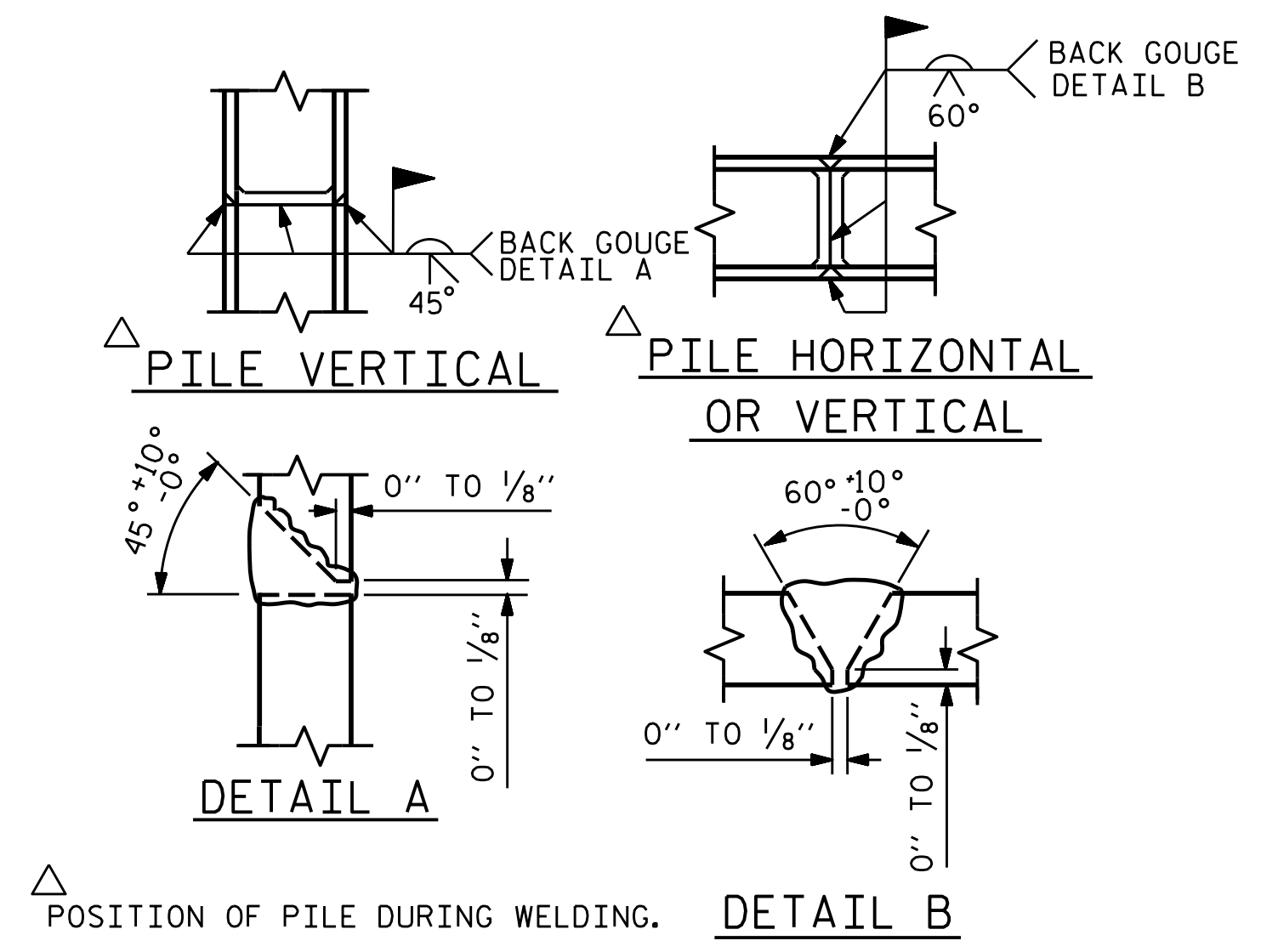
MINIMUM OF 3- ONE CUBIC FOOT BAGS OF #78M STONE. BAGS SHALL BE OF POROUS FABRIC, SECURELY TIED.

BAGGED STONE AND PIPE SHALL BE PLACED IMMEDIATELY AFTER COMPLETION OF END BENT EXCAVATION. PIPE MAY BE EITHER CONCRETE, CORRUGATED STEEL, CORRUGATED ALUMINUM ALLOY, OR CORRUGATED PLASTIC. PERFORATED PIPE WILL NOT BE ALLOWED.

BAGGED STONE SHALL REMAIN IN PLACE UNTIL THE ENGINEER DIRECTS THAT IT BE REMOVED. THE CONTRACTOR SHALL REMOVE AND DISPOSE OF SILT ACCUMULATIONS AT BAGGED STONE WHEN SO DIRECTED BY THE ENGINEER. BAGS SHALL BE REMOVED AND REPLACED WHENEVER THE ENGINEER DETERMINES THAT THEY HAVE DETERIORATED AND LOST THEIR EFFECTIVENESS.

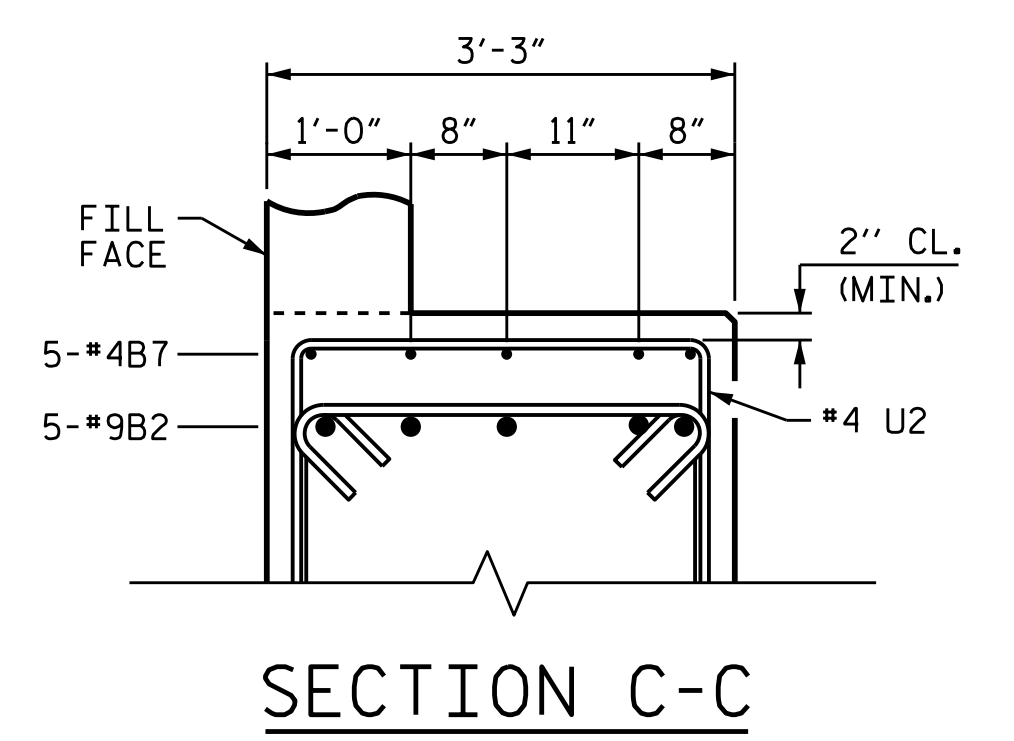
NO SEPARATE PAYMENT WILL BE MADE FOR THIS WORK AND THE ENTIRE COST OF THIS WORK SHALL BE INCLUDED IN THE UNIT CONTRACT PRICE BID FOR THE SEVERAL PAY ITEMS.

TEMPORARY DRAINAGE AT END BENT



POSITION OF PILE DURING WELDING. DETAIL B

PILE SPLICE DETAILS

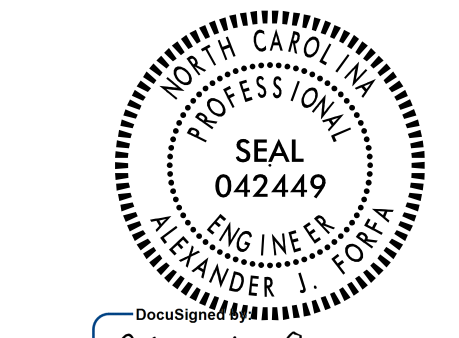


SECTION C-C

DRAWN BY :	N. ROHRBAUGH	DATE :	07/2021
CHECKED BY :	A. FORFA	DATE :	07/2021
DESIGN ENGINEER OF RECORD :	A. FORFA	DATE :	09/2021



8000 Regency Parkway
Suite 175
Cary, NC 27518
984-275-2490
benesch.com
NC License No. F-1320



DOCUMENT NOT CONSIDERED FINAL UNLESS ALL SIGNATURES COMPLETED

PROJECT NO. BR-0033
McDOWELL COUNTY
STATION: 16+11.51 -L-

SHEET 3 OF 3

STATE OF NORTH CAROLINA DEPARTMENT OF TRANSPORTATION RALEIGH					
SUBSTRUCTURE END BENT 1					
REVISIONS					
NO.	BY:	DATE:	NO.	BY:	DATE:
1			3		
2			4		
SHEET NO.					S-23
TOTAL SHEETS					32