

NOTES

FOR DISC BEARINGS, SEE SPECIAL PROVISIONS.

ALL BEARING PLATES SHALL BE AASHTO M270 GRADE 50W OR GRADE 50.

AT ALL POINTS OF SUPPORT, NUTS FOR ANCHOR BOLTS SHALL BE FINGER-TIGHTENED PLUS AN ADDITIONAL 1/4 TURN. THE THREAD OF THE NUT AND BOLT SHALL THEN BE BURRED WITH A SHARP POINTED TOOL.

WHEN WELDING THE SOLE PLATE TO THE GIRDER, USE TEMPERATURE INDICATING WAX PENS, OR OTHER SUITABLE MEANS, TO ENSURE THAT THE TEMPERATURE OF THE BEARING DOES NOT EXCEED 250°F. TEMPERATURES ABOVE THIS MAY DAMAGE THE TFE OR URETHANE DISC.

AFTER BEARING ASSEMBLY IS IN PLACE AND ANCHOR BOLTS HAVE BEEN FINALLY POSITIONED, THEY SHALL BE GROUTED IN PLACE AS SHOWN.

THE CLOSURE PLATE, GROUT PIPE, AND STANDARD PIPE FOR THIS ASSEMBLY NEED NOT BE GALVANIZED.

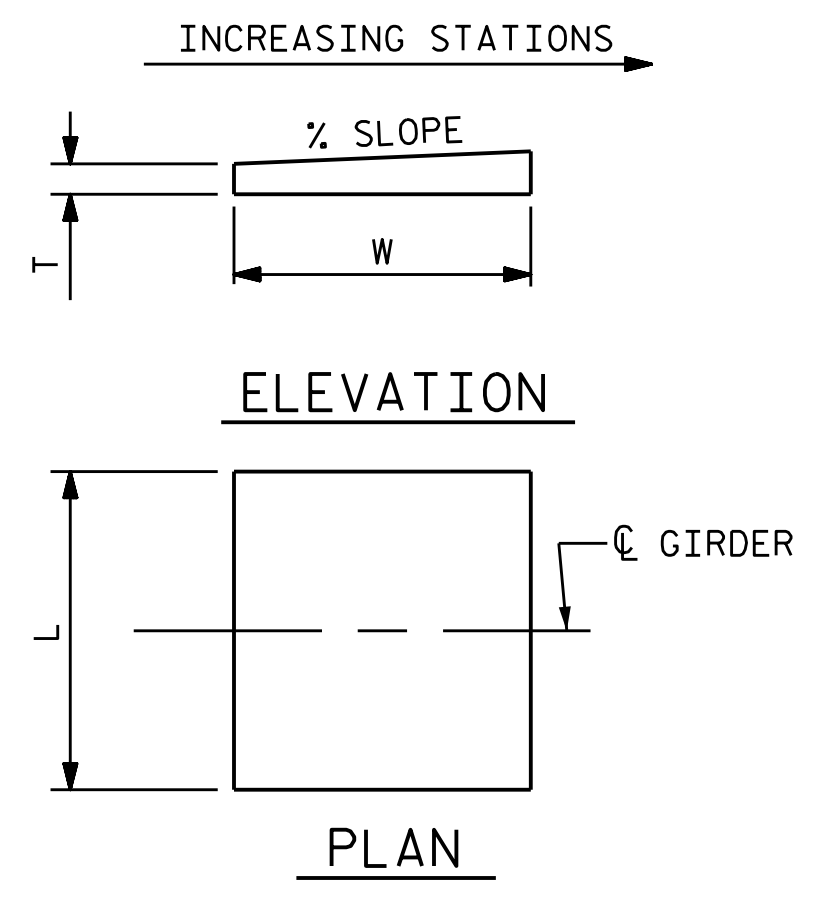
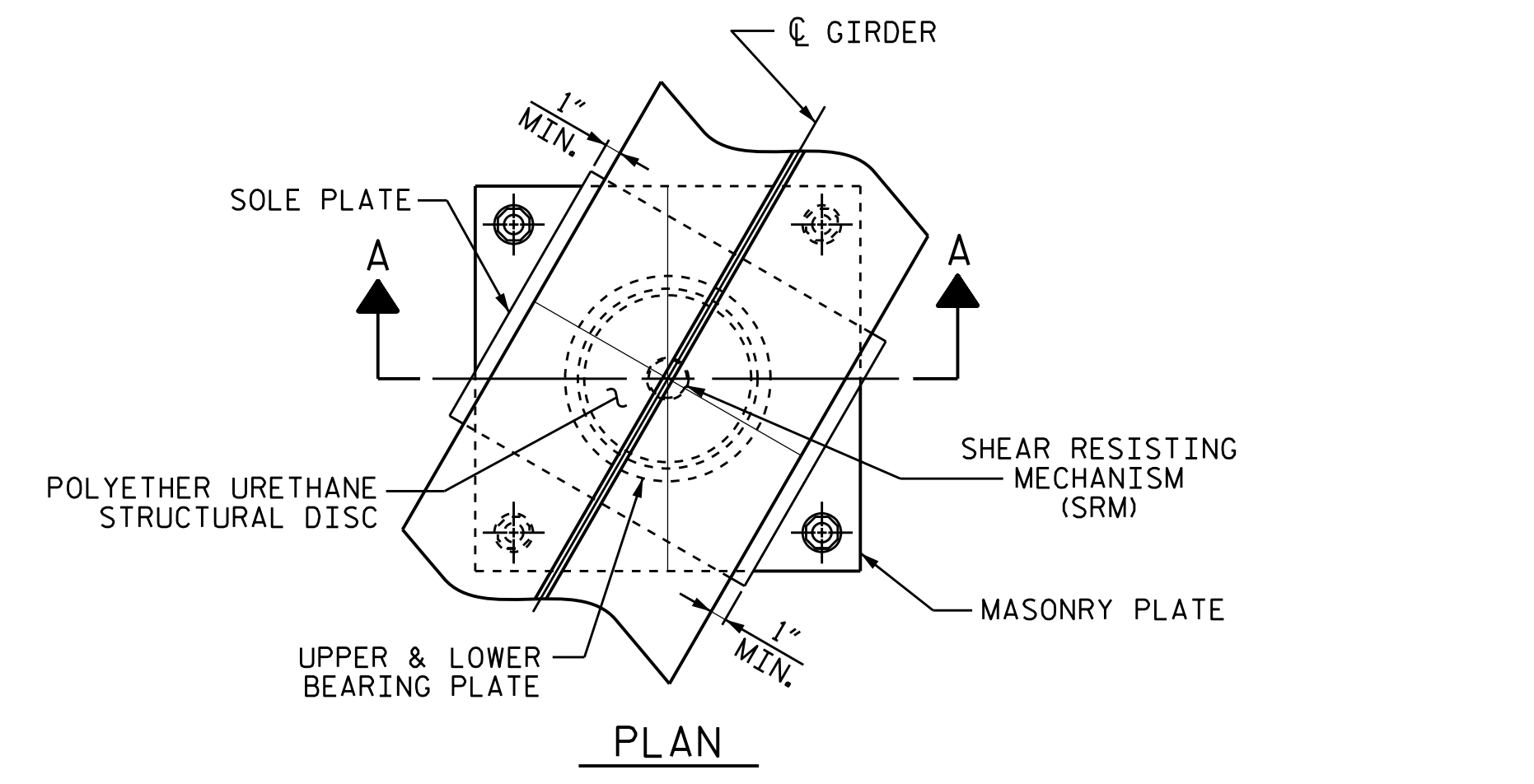
SOLE PLATES SHOULD BE WELDED TO GIRDER FLANGES AND ANCHOR BOLTS SHOULD BE GROUTED BEFORE FALSEWORK IS PLACED.

ALL SURFACES OF BEARING PLATES SHALL BE SMOOTH AND STRAIGHT.

FOR ATTACHMENT OF THE STAINLESS STEEL SHEETS TO THE STEEL SOLE PLATE AND GUIDE BARS, AS WELL AS THE TOP AND SIDE PTFE SHEETS TO THE STEEL UPPER BEARING PLATE, SEE SPECIAL PROVISIONS.

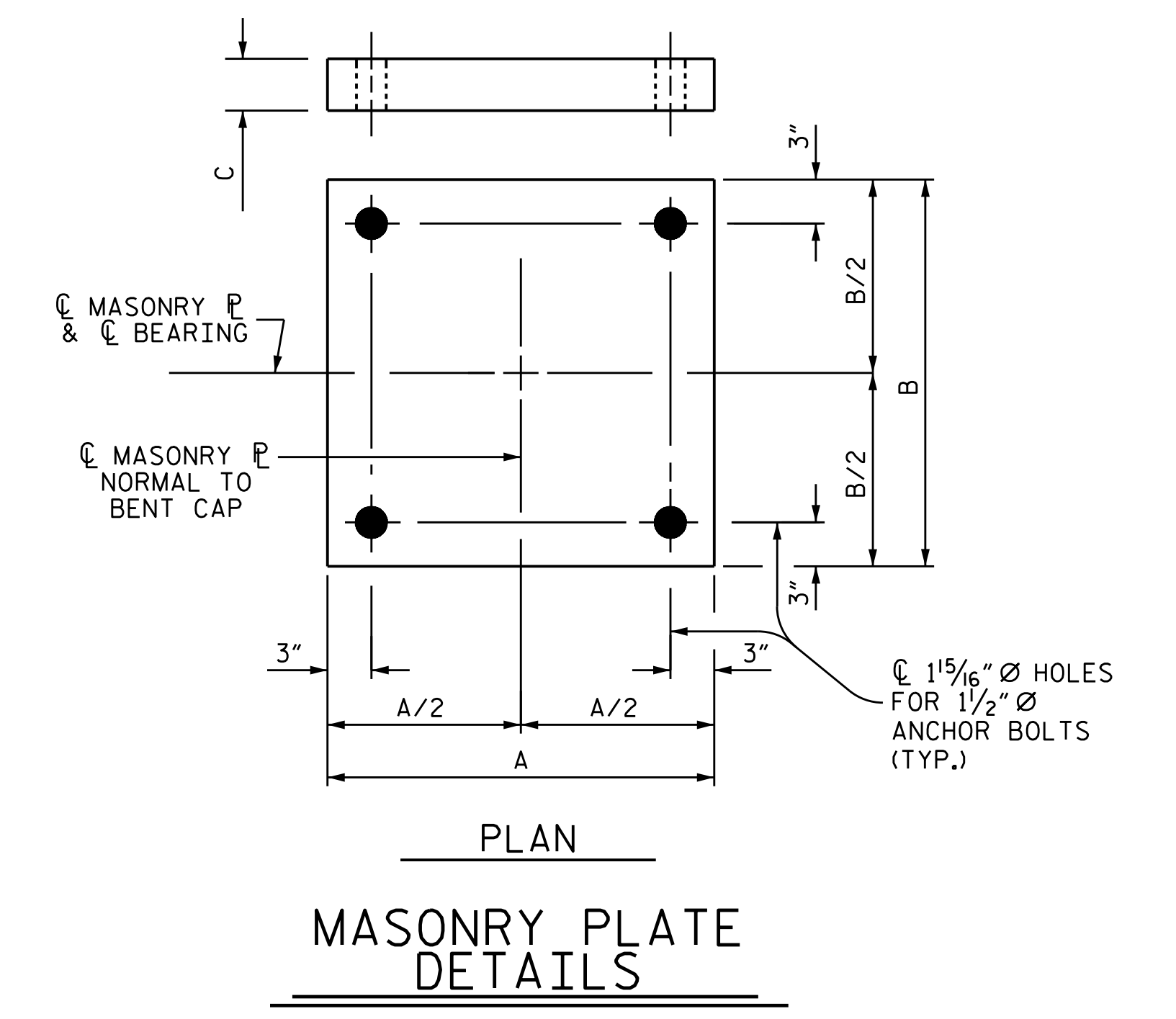
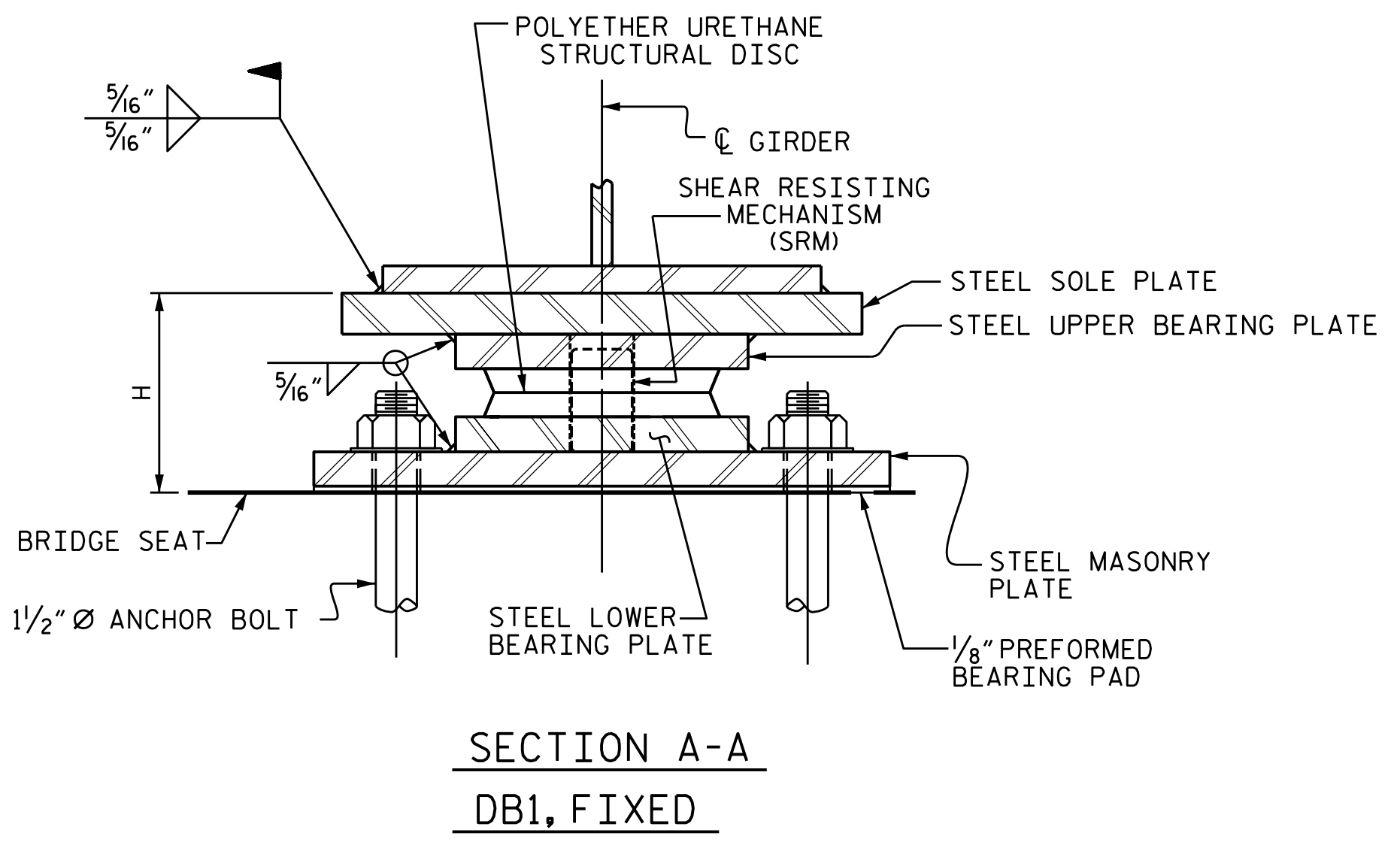
FOR THERMAL SPRAYED COATINGS (METALLIZATION), SEE SPECIAL PROVISIONS.

THE MINIMUM ROTATIONAL CAPACITY FOR ALL BEARINGS SHALL BE 0.02 RADIAN.



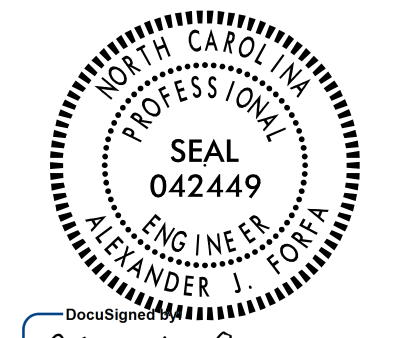
NOTE:
DIMENSIONS "W" AND "T" SHALL BE DETERMINED BY THE BEARING MANUFACTURER.

SOLE PLATE DETAILS



DESIGNATIONS		LOCATION	NUMBER OF BEARINGS	DIMENSIONS				LOADS AND MOVEMENT						
				BEARING H (IN.)	MASONRY PLATE A (IN.)	B (IN.)	C (IN.)	SOLE PLATE TOP SLOPE (%)	L (IN.)	UNFACTORED VERTICAL LOAD (KIPS)		FACTORED HORIZONTAL LOAD (KIPS)	ONE-WAY MOVEMENT (IN.)	
BEARINGS	MASONRY PLATE							DC	DW	LIVE	LL+IM			
DB1 (FIXED)	M1	BENT 1	5	6 3/4"	24 1/2"	24 1/2"	1"	3.906	22"	280.2	37.8	230.9	108.4	0

PROJECT NO. BR-0033
McDOWELL COUNTY
 STATION: 16+11.51 -L-



DOCUMENT NOT CONSIDERED FINAL UNLESS ALL SIGNATURES COMPLETED

STATE OF NORTH CAROLINA
 DEPARTMENT OF TRANSPORTATION
 RALEIGH

STANDARD
 DISC BEARING
 DETAILS

ASSEMBLED BY : M. SPENCER DATE : 06/21
 CHECKED BY : A. FORFA DATE : 06/21
 DRAWN BY : TMG 08/13 REV. 12/17 MAA/THC
 CHECKED BY : EKP 10/13



8000 Regency Parkway
 Suite 175
 Cary, NC 27518
 984-275-2490
 benesch.com
 NC License No. F-1320

REVISIONS						SHEET NO.
NO.	BY:	DATE:	NO.	BY:	DATE:	S-15
1			3			TOTAL SHEETS
2			4			32