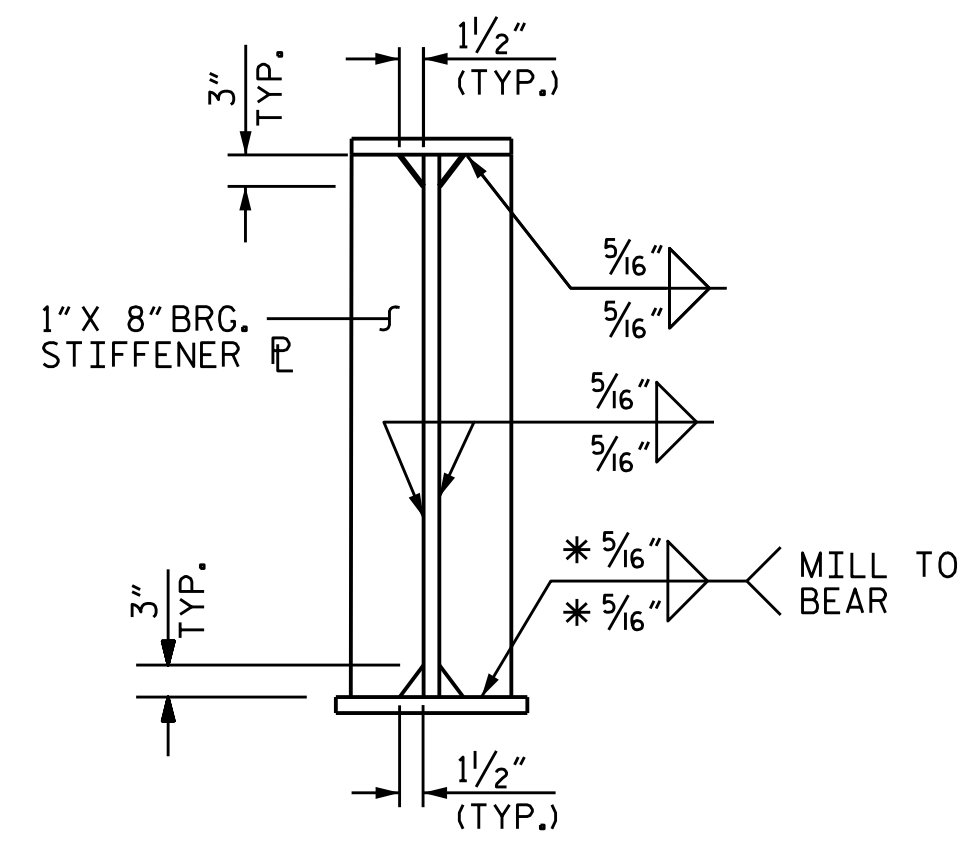
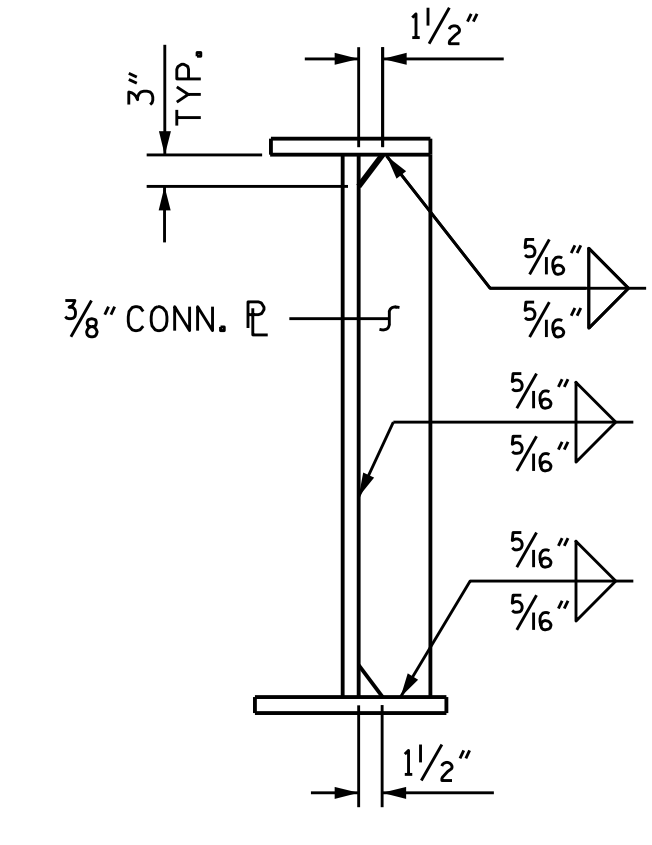


BEARING STIFFENER @ END BENTS

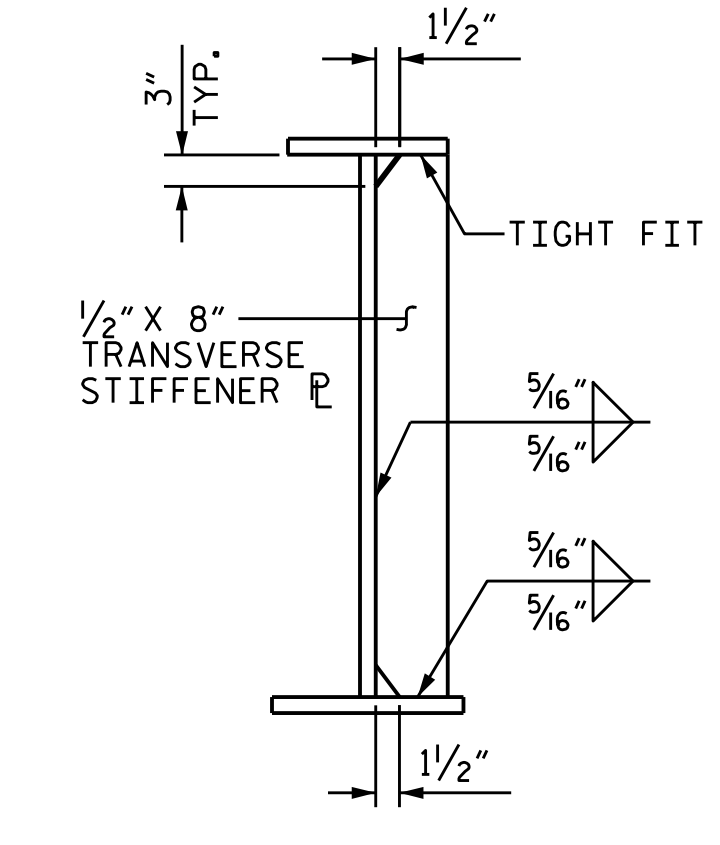


BEARING STIFFENER @ BENTS

* WELD ONLY WHEN USED AS CONNECTOR



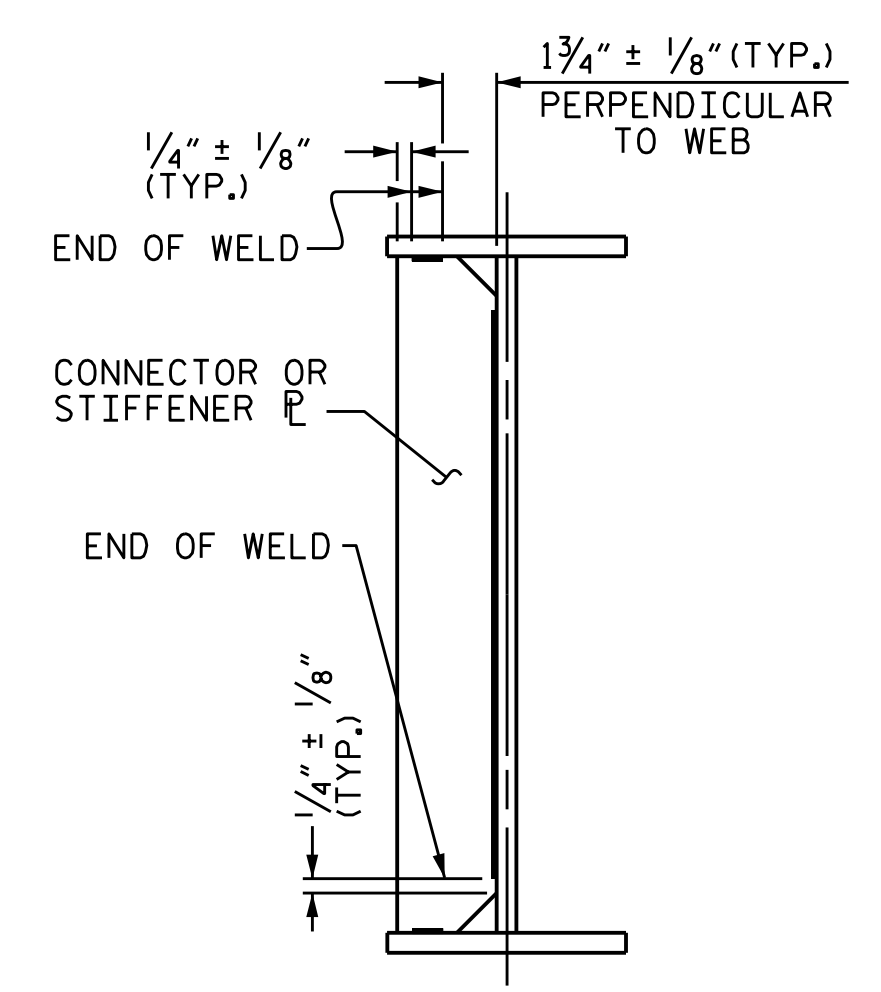
CONNECTOR PLATE



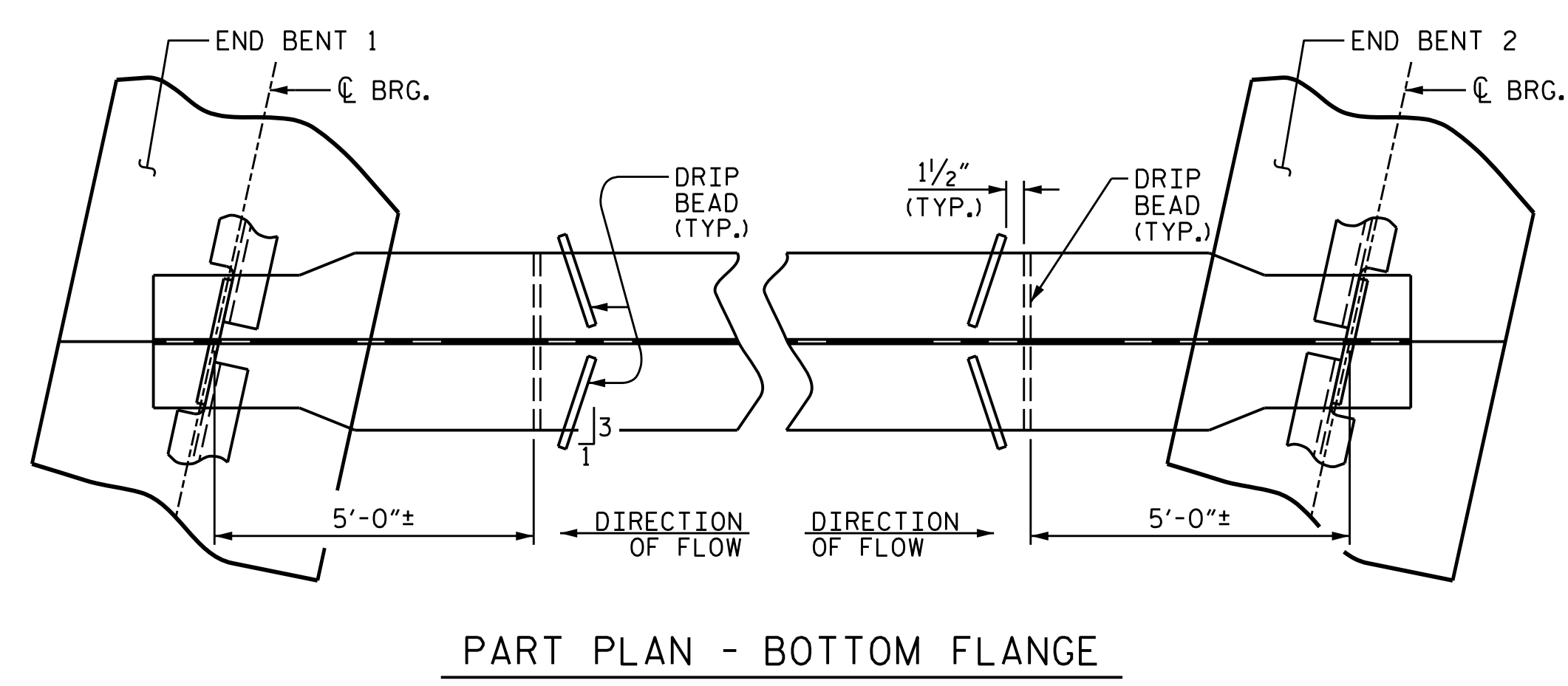
TRANSVERSE STIFFENER

NOTES:

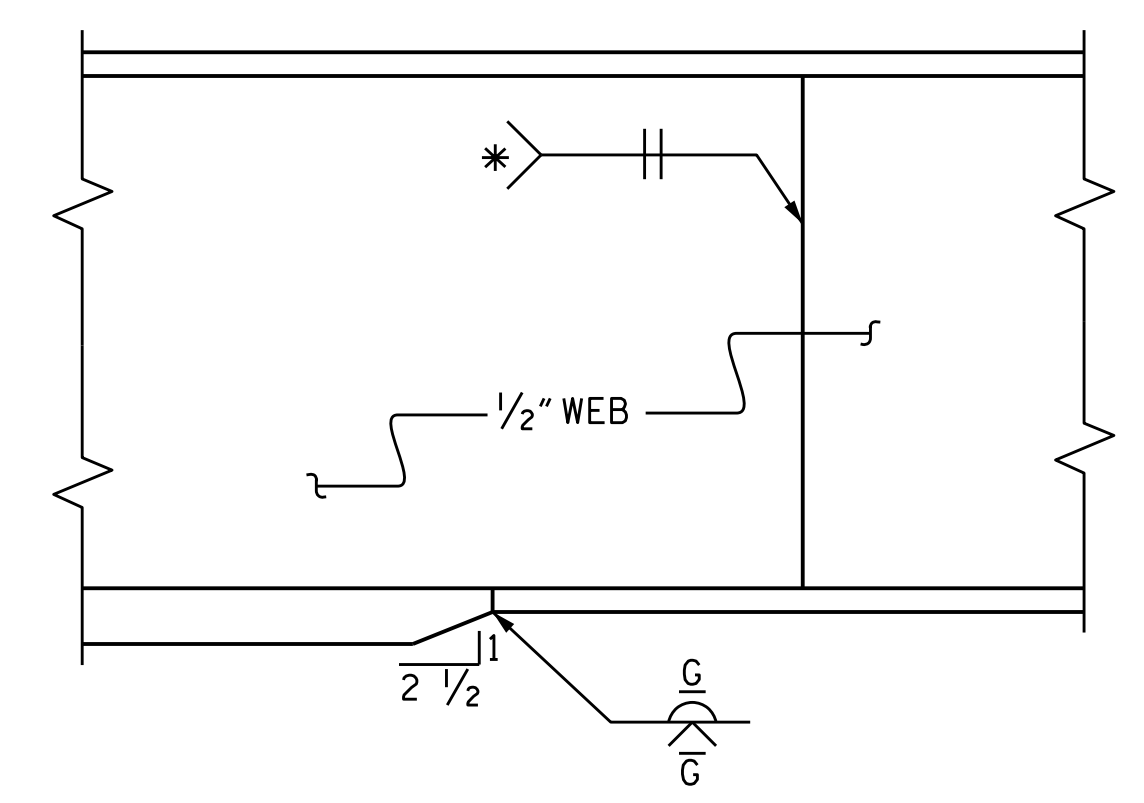
- ALL STRUCTURAL STEEL SHALL BE AASHTO M270 GRADE 50W AND PAINTED IN ACCORDANCE WITH SYSTEM 5 OR SYSTEM 6 OF THE STRUCTURAL STEEL SHOP COATINGS PROGRAM AND SECTION 442-8 OF THE STANDARD SPECIFICATIONS UNLESS OTHERWISE NOTED ON THE PLANS.
- BEARING STIFFENERS ARE TO BE PLACED NORMAL TO THE WEB OF THE GIRDERS AND SHALL BE PLUMB.
- PERMITTED FLANGE AND WEB SHOP SPLICES SHALL NOT BE LOCATED WITHIN 15 FEET OF MAXIMUM DEAD LOAD DEFLECTION (NOR WITHIN 15 FEET OF INTERMEDIATE BEARINGS OF CONTINUOUS UNITS). KEEP 2 FEET MINIMUM BETWEEN WEB AND FLANGE SHOP SPLICES. KEEP 6" MINIMUM BETWEEN CONNECTOR PLATE OR TRANSVERSE STIFFENER WELDS AND WEB OR FLANGE SHOP SPLICES.
- STUDS ON GIRDERS MAY BE SHIFTED UP TO 1" IF NECESSARY TO CLEAR FLANGE SPLICE WELD.
- ALL DIMENSIONS SHOWN ARE HORIZONTAL OR VERTICAL, UNLESS OTHERWISE NOTED.
- FABRICATORS SHALL DETAIL DIAPHRAGM MEMBERS AND CONNECTIONS FOR FULL DEAD LOAD FIT UP. GIRDERS SHALL BE PLUMB AFTER THE FULL AMOUNT OF DEAD LOAD IS APPLIED.
- ALL FIELD CONNECTIONS TO BE 7/8" DIA. HIGH STRENGTH BOLTS UNLESS OTHERWISE NOTED.
- TENSION ON THE ASTM A325 BOLTS SHALL BE CALIBRATED USING DIRECT TENSION INDICATOR WASHERS IN ACCORDANCE WITH ARTICLE 440-8 OF THE STANDARD SPECIFICATIONS.
- END OF BEAMS AND GIRDERS SHALL BE PLUMB.
- BEARING STIFFENER MAY REQUIRE COPING IF WIDER THAN BOTTOM FLANGE.
- STRUCTURAL STEEL ERECTION IN A CONTINUOUS UNIT SHALL BE COMPLETE BEFORE FALSEWORK OR FORMS ARE PLACED ON THE UNIT.



TYPICAL STIFFENER OR CONNECTOR PLATE CONNECTIONS
WELD TERMINATION DETAILS

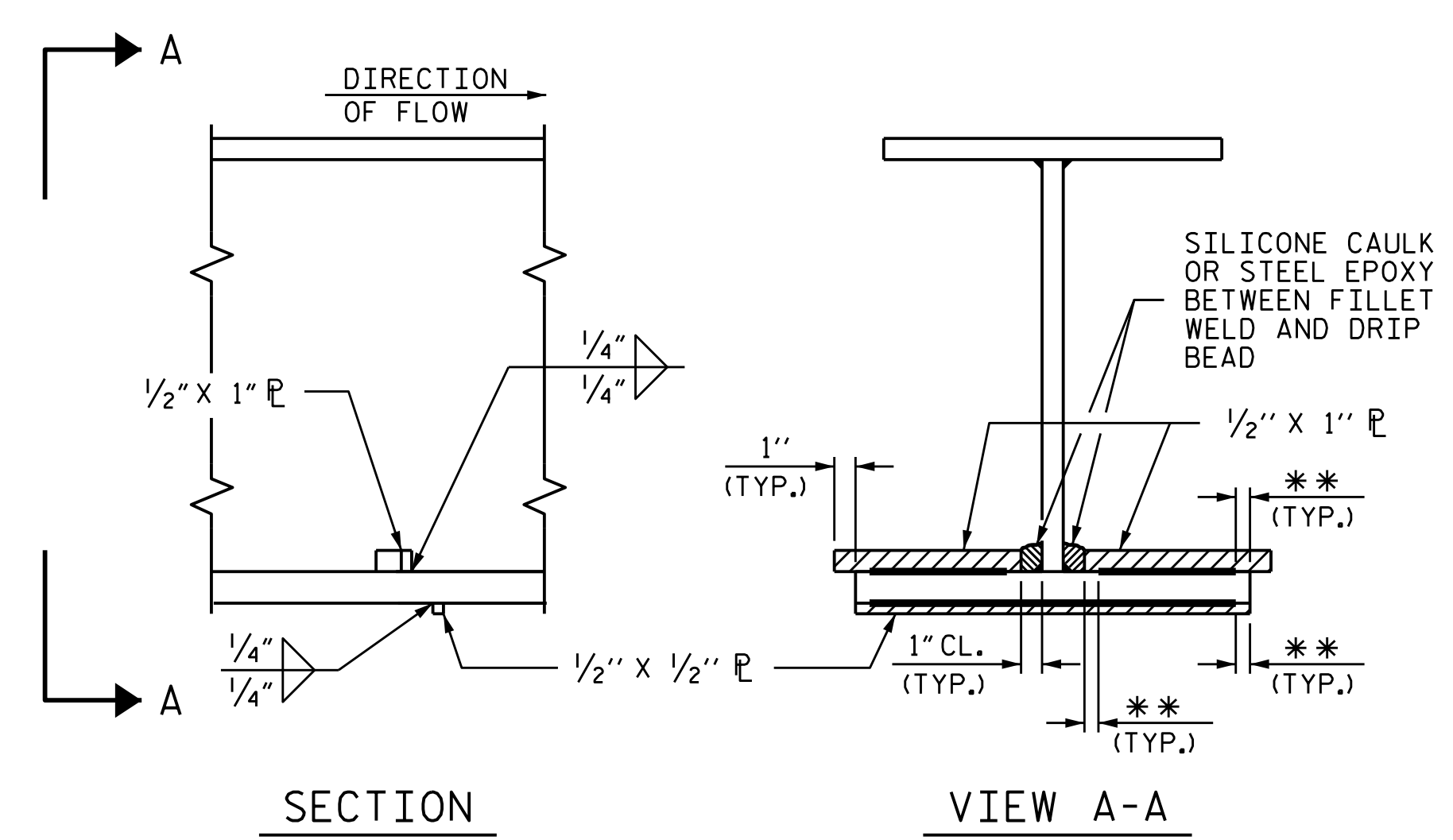


PART PLAN - BOTTOM FLANGE



ELEVATION
TYPICAL FLANGE AND WEB BUTT JOINT

* GRIND SMOOTH AND FLUSH ON OUTER FACE OF EXTERIOR BEAMS /GIRDERS

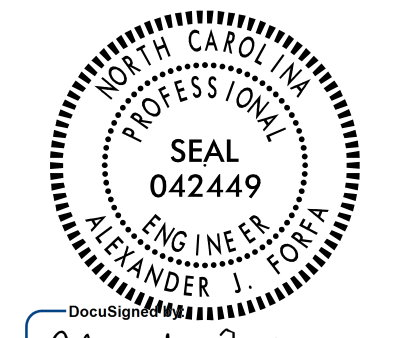


SECTION
VIEW A-A
DRIP BEAD DETAILS
** SEE "WELD TERMINATION DETAILS"

PROJECT NO. BR-0033
McDOWELL COUNTY
STATION: 16+11.51 -L-

SHEET 3 OF 4

STATE OF NORTH CAROLINA
DEPARTMENT OF TRANSPORTATION
RALEIGH
SUPERSTRUCTURE
STRUCTURAL STEEL
DETAILS



Alexander Forfa 11/23/2021

DRAWN BY :	M. SPENCER	DATE :	07/2021
CHECKED BY :	A. FORFA	DATE :	07/2021
DESIGN ENGINEER OF RECORD :	A. FORFA	DATE :	09/2021



8000 Regency Parkway
Suite 175
Cary, NC 27518
984-275-2490
benesch.com
NC License No. F-1320

DOCUMENT NOT CONSIDERED FINAL UNLESS ALL SIGNATURES COMPLETED

REVISIONS						SHEET NO.
NO.	BY:	DATE:	NO.	BY:	DATE:	S-12
1			3			TOTAL SHEETS
2			4			32