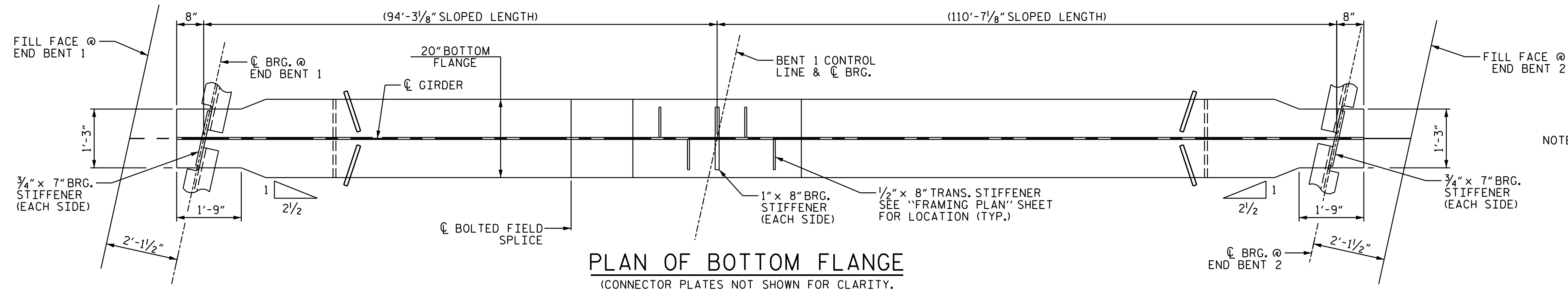


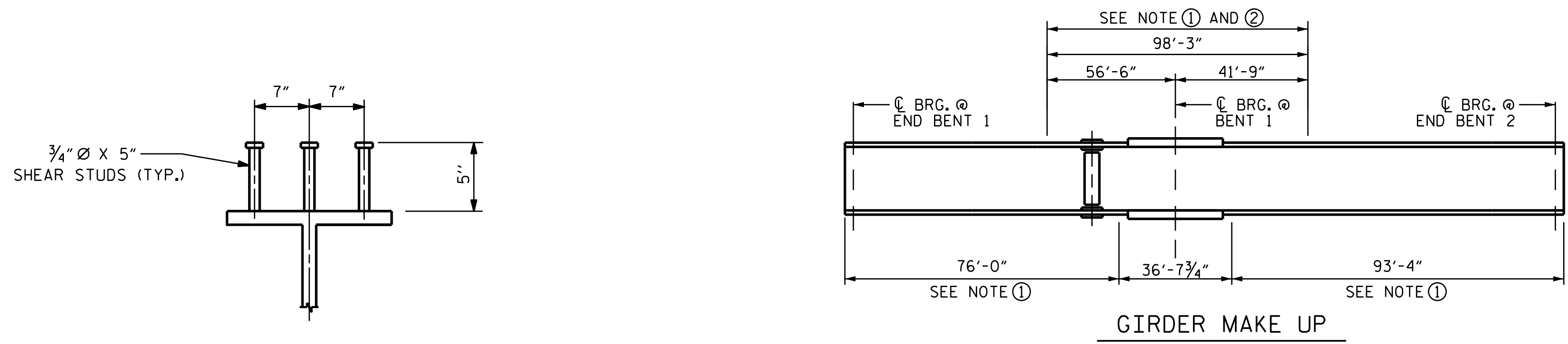
(A) FOR SHEAR STUDS IN THIS AREA SEE "STRUCTURAL STEEL DETAILS" SHEET 4 OF 4 (3 STUDS PER ROW)

PLATE GIRDER ELEVATION
(CONNECTOR PLATES AND TRANSVERSE STIFFENERS NOT SHOWN FOR CLARITY. FOR PLACEMENT SEE "FRAMING PLAN" SHEET.)



NOTE: TRANSVERSE STIFFENERS ARE TO BE PLACED ON ALTERNATING SIDES OF INTERIOR GIRDERS, AND ARE TO BE PLACED ONLY ON INSIDE OF EXTERIOR GIRDERS. SEE "FRAMING PLAN" SHEET FOR LOCATION.

PLAN OF BOTTOM FLANGE
(CONNECTOR PLATES NOT SHOWN FOR CLARITY. FOR PLACEMENT SEE "FRAMING PLAN" SHEET.)



SHEAR STUD DETAILS
(TYP. EA. GIRDER EXCEPT @ TOP FLANGE SPLICE PLATES)

NOTE ①: CHARPY V-NOTCH TESTS ARE REQUIRED FOR ALL TOP OR BOTTOM FLANGE PLATES WHICH FALL WITHIN THESE LIMITS, ALL WEB PLATES, AND ALL SPLICE PLATES. IF A PERMITTED SHOP FLANGE SPLICE IS NOT USED, CHARPY V-NOTCH TESTS WILL BE REQUIRED FOR THE ENTIRE FLANGE PLATE. FOR CHARPY V-NOTCH TESTS, SEE ARTICLE 1072-7 OF THE STANDARD SPECIFICATIONS.

NOTE ②: NO WELDING OF FORMS OR FALSEWORK TO THE TOP FLANGE WILL BE PERMITTED IN THIS REGION.

CHARPY V-NOTCH TESTS FOR CONTINUOUS PLATE GIRDERS

PROJECT NO. BR-0033
McDOWELL COUNTY
STATION: 16+11.51 -L-

SHEET 1 OF 4

STATE OF NORTH CAROLINA
DEPARTMENT OF TRANSPORTATION
RALEIGH
SUPERSTRUCTURE
STRUCTURAL STEEL
DETAILS



DOCUMENT NOT CONSIDERED FINAL UNLESS ALL SIGNATURES COMPLETED

REVISIONS						SHEET NO.
NO.	BY:	DATE:	NO.	BY:	DATE:	S-10
1			3			TOTAL SHEETS
2			4			32

DRAWN BY: N. ROHRBAUGH DATE: 06/2021
CHECKED BY: A. FORFA DATE: 06/2021
DESIGN ENGINEER OF RECORD: A. FORFA DATE: 09/2021



8000 Regency Parkway
Suite 175
Cary, NC 27518
984-275-2490
benesch.com
NC License No. F-1320