


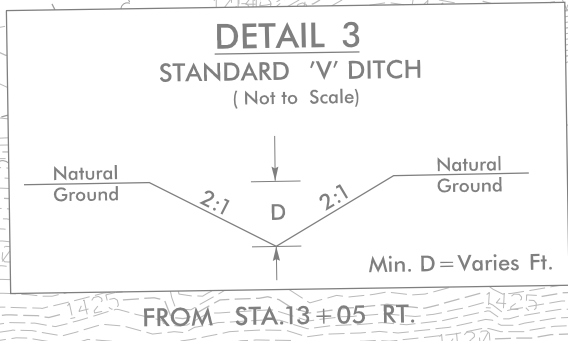
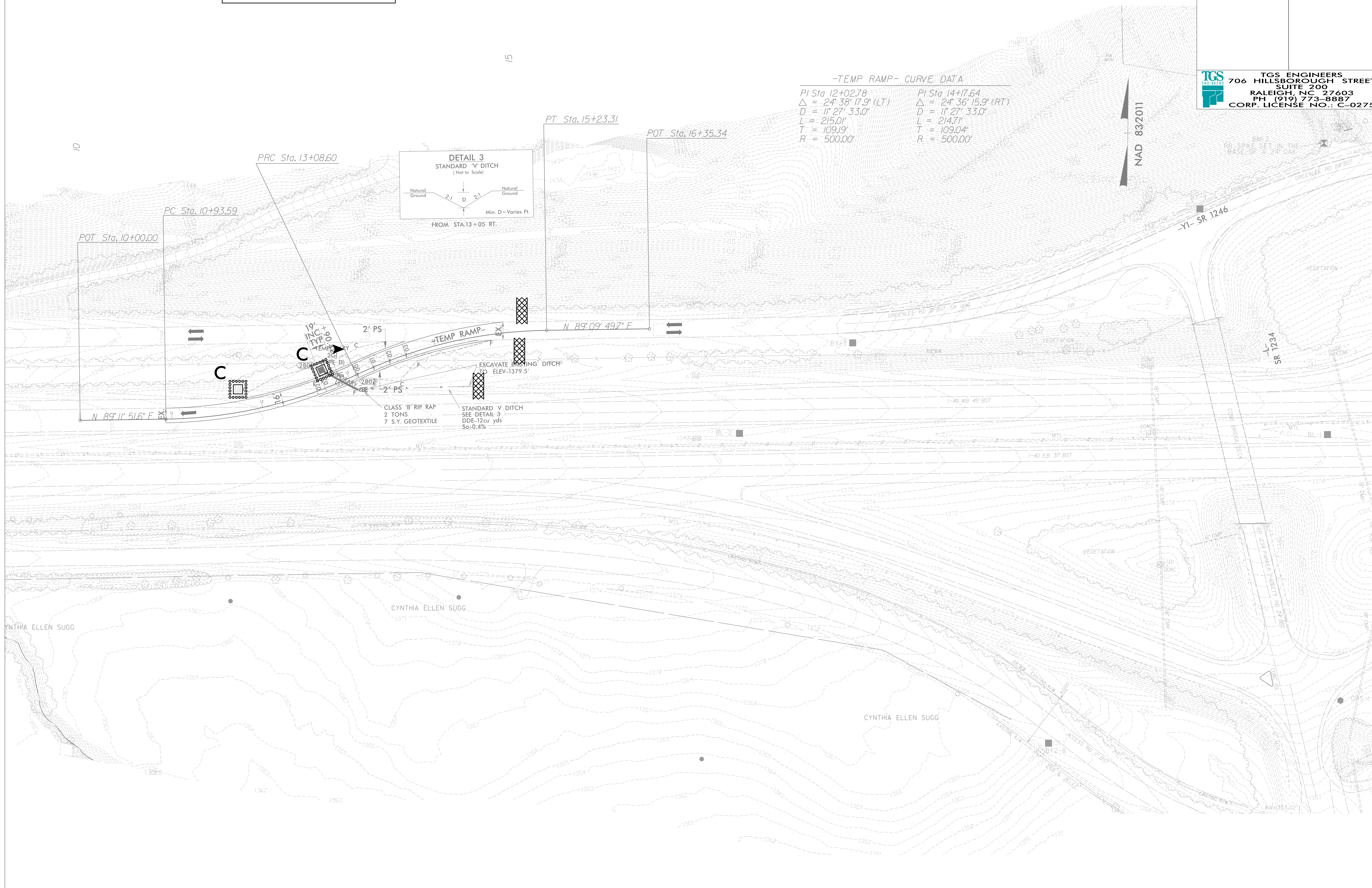
NOTE:  
PLACE TEMPORARY ROCK SEDIMENT DAMS TYPE - B  
AND TEMPORARY ROCK SILT CHECKS TYPE - A AT  
DRAINAGE OUTLETS.

TRSC-A's, TRSC-B, AND RIST-C ON EXISTING  
INLET ARE FOR C&G AND FINAL EC PHASES  
ON CONST. SHEET 2B-1

RIST-C ON TEMP. 2GI (2B01) IS FOR  
FINAL EC PHASE ON CONST. SHEET 2B-1

McDowell County  
Bridge #580084  
DETOUR

PROJECT REFERENCE NO. BR-0033	SHEET NO. EC-4A/CONST.2B-1
RW SHEET NO.	HYDRAULICS ENGINEER
ROADWAY DESIGN ENGINEER	
 <b>TGS ENGINEERS</b> 706 HILLSBOROUGH STREET SUITE 200 RALEIGH, NC 27603 PH (919) 773-8887 CORP. LICENSE NO.: C-0275	



**-TEMP RAMP- CURVE DATA**

PI Sta 12+02.78	PI Sta 14+17.64
$\Delta = 24^\circ 38' 17.9''$ (LT)	$\Delta = 24^\circ 36' 15.9''$ (RT)
$D = 11' 27' 33.0''$	$D = 11' 27' 33.0''$
$L = 215.0'$	$L = 214.7'$
$T = 109.19'$	$T = 109.04'$
$R = 500.00'$	$R = 500.00'$