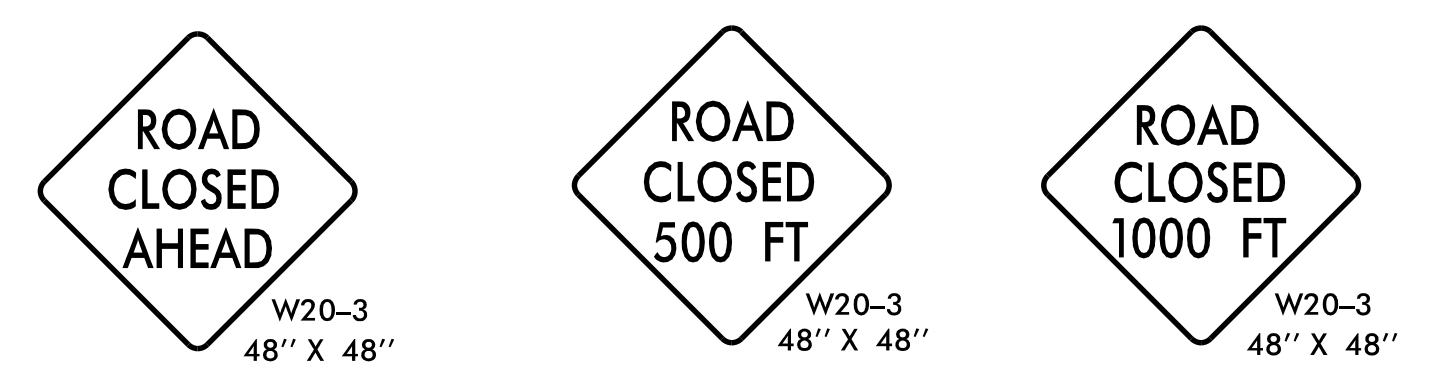
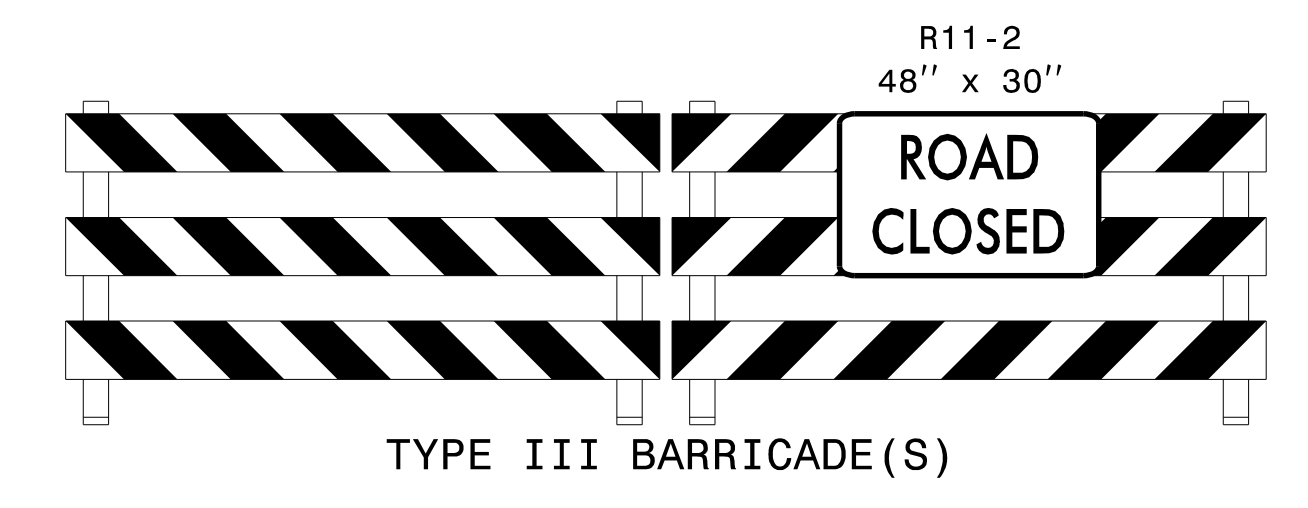


MESSAGE NO. 1	MESSAGE NO. 2
GREENLEE CLOSED AT I-40	11 PM TO 6 AM

CHANGEABLE MESSAGE SIGN



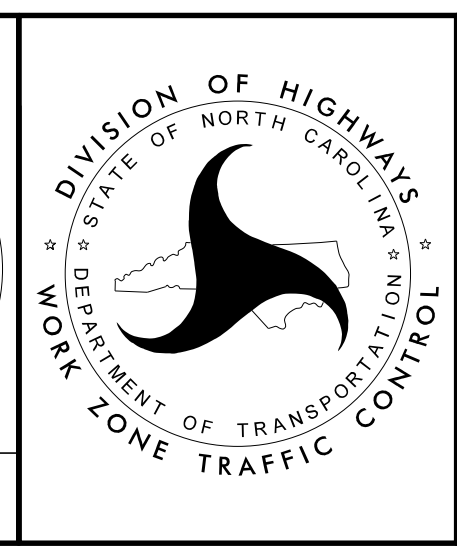
NOTE: ACTIVATE CMS MORNING OF OPERATION FOR ADVANCE NOTICE



APPROVED: *Don A. Parker*
 DATE: 01/11/2022

SEAL
 043251
 ENGINEER
 DON A. PARKER

DOCUMENT NOT CONSIDERED FINAL UNLESS ALL SIGNATURES COMPLETED



I-40 CLOSURE FOR GIRDERS/BRIDGE DEMOLITION DETAILS

I:\10\2022
 N:\Special\BR0033\TrafficControl\TCP\90%_BR-0033\BR-0033_TC_TMP_02C.dgn
 User:mackillu