
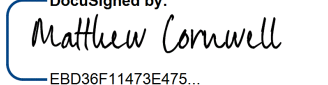
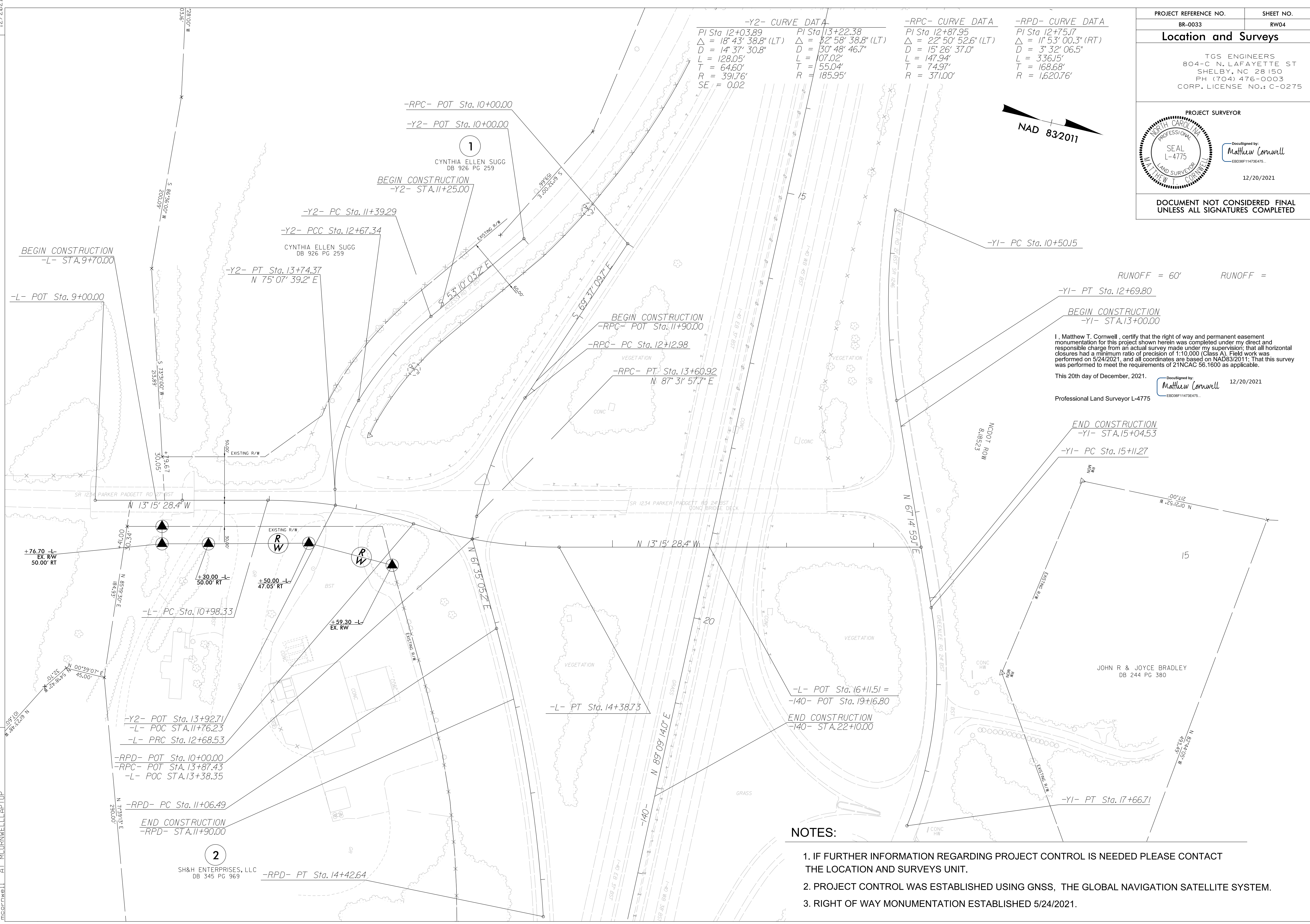
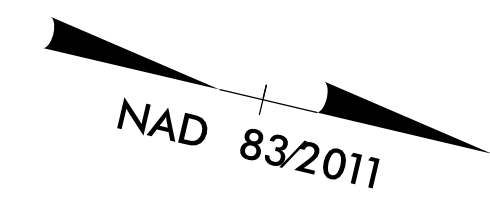


PROJECT REFERENCE NO. BR-0033	SHEET NO. RW04
Location and Surveys	
TGS ENGINEERS 804-C N. LAFAYETTE ST SHELBY, NC 28150 PH (704) 476-0003 CORP. LICENSE NO.: C-0275	
PROJECT SURVEYOR	
	DocuSigned by:  Matthew Cornwell EBD36F1473E475 12/20/2021
DOCUMENT NOT CONSIDERED FINAL UNLESS ALL SIGNATURES COMPLETED	


REVISIONS

-Y2- CURVE DATA		-RPC- CURVE DATA		-RPD- CURVE DATA	
PI Sta 12+03.89	PI Sta 13+22.38	PI Sta 12+87.95	PI Sta 12+75.17	PI Sta 12+75.17	PI Sta 12+75.17
$\Delta = 18^{\circ} 43' 38.8" (LT)$	$\Delta = 82^{\circ} 58' 38.8" (LT)$	$\Delta = 22^{\circ} 50' 52.6" (LT)$	$\Delta = 11^{\circ} 53' 00.3" (RT)$	$\Delta = 11^{\circ} 53' 00.3" (RT)$	$\Delta = 11^{\circ} 53' 00.3" (RT)$
D = 14' 37' 30.8"	D = 30' 48' 46.7"	D = 15' 26' 37.0"	D = 3' 32' 06.5"	D = 3' 32' 06.5"	D = 3' 32' 06.5"
L = 128.05'	L = 107.02'	L = 147.94'	L = 336.15'	L = 336.15'	L = 336.15'
T = 64.60'	T = 55.04'	T = 74.97'	T = 168.68'	T = 168.68'	T = 168.68'
R = 391.76'	R = 185.95'	R = 371.00'	R = 1,620.76'	R = 1,620.76'	R = 1,620.76'
SE = 0.02					



RUNOFF = 60' RUNOFF =

I, Matthew T. Cornwell, certify that the right of way and permanent easement monumentation for this project shown herein was completed under my direct and responsible charge from an actual survey made under my supervision; that all horizontal closures had a minimum ratio of precision of 1:10,000 (Class A). Field work was performed on 5/24/2021, and all coordinates are based on NAD83/2011; That this survey was performed to meet the requirements of 21NCAC 58.1600 as applicable.

This 20th day of December, 2021.
 DocuSigned by:

 Matthew Cornwell
 EBD36F1473E475
 Professional Land Surveyor L-4775
 12/20/2021

END CONSTRUCTION
 -YI- STA. 15+04.53
 -YI- PC Sta. 15+11.27

NOTES:

1. IF FURTHER INFORMATION REGARDING PROJECT CONTROL IS NEEDED PLEASE CONTACT THE LOCATION AND SURVEYS UNIT.
2. PROJECT CONTROL WAS ESTABLISHED USING GNSS, THE GLOBAL NAVIGATION SATELLITE SYSTEM.
3. RIGHT OF WAY MONUMENTATION ESTABLISHED 5/24/2021.

12 DEC 2021 10:27
 S:\S\Projects\ncdot\BR-0033\AS SUBMITTED 211220\BR0033.1.s-rw04.dgn
 Matthew T. Cornwell
 PLANDSURV