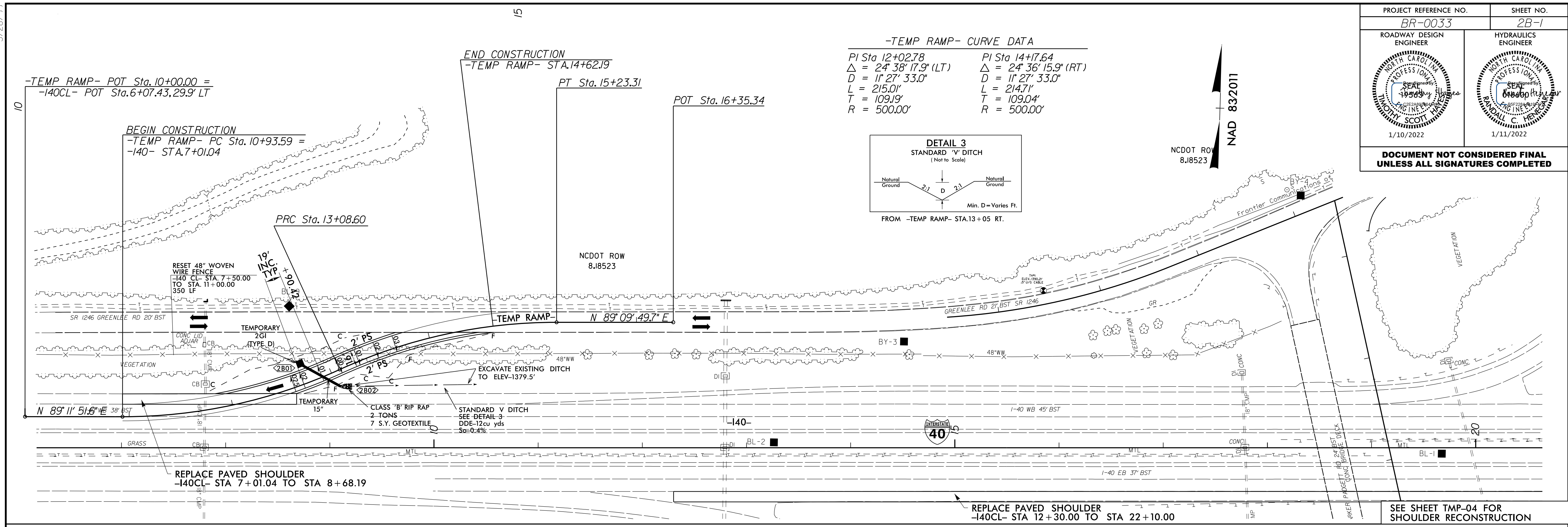


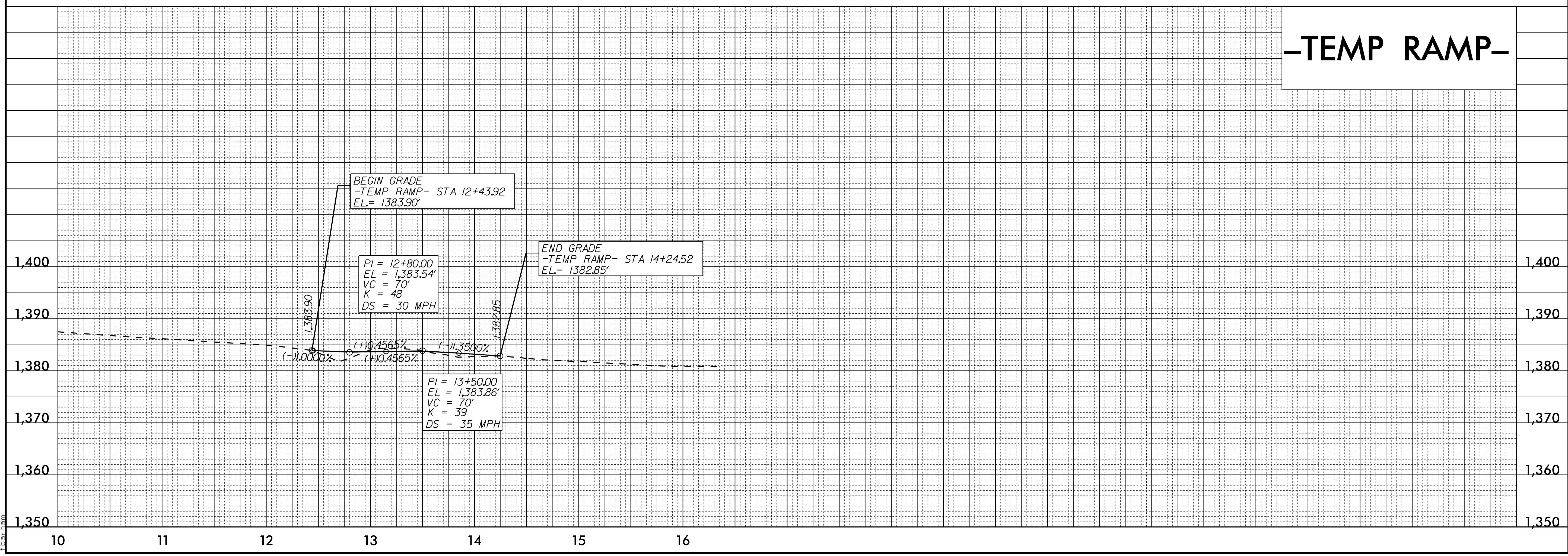
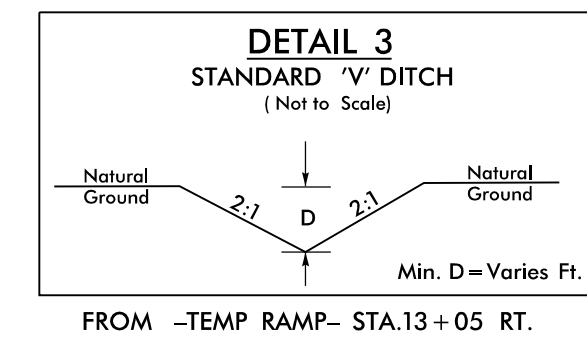
5/28/2017 13:38
 C:\P\Projects\00000004_2017_NCDOT_SMI_OC_BR-0033\Admin\correspondence\TO\NCDOT\100%_PLANS_Revised\Roadway_Supporting_Documents\BR0033_CADD\Roadway\Proj\BR0033_Rdy_2B-1.dgn
 5/28/2017 13:38
 C:\P\Projects\00000004_2017_NCDOT_SMI_OC_BR-0033\Admin\correspondence\TO\NCDOT\100%_PLANS_Revised\Roadway_Supporting_Documents\BR0033_CADD\Roadway\Proj\BR0033_Rdy_2B-1.dgn

PROJECT REFERENCE NO. BR-0033	SHEET NO. 2B-1
ROADWAY DESIGN ENGINEER JUDITH SCOTT 1/10/2022	HYDRAULICS ENGINEER BRADLEY C. HENNING 1/11/2022
DOCUMENT NOT CONSIDERED FINAL UNLESS ALL SIGNATURES COMPLETED	



-TEMP RAMP- CURVE DATA

PI Sta 12+02.78 Δ = 24° 38' 17.9" (LT) D = 11° 27' 33.0" L = 215.01' T = 109.19' R = 500.00'	PI Sta 14+17.64 Δ = 24° 36' 15.9" (RT) D = 11° 27' 33.0" L = 214.71' T = 109.04' R = 500.00'
---	---



-TEMP RAMP-

REPLACE PAVED SHOULDER
-140CL- STA 12+30.00 TO STA 22+10.00

SEE SHEET TMP-04 FOR
SHOULDER RECONSTRUCTION