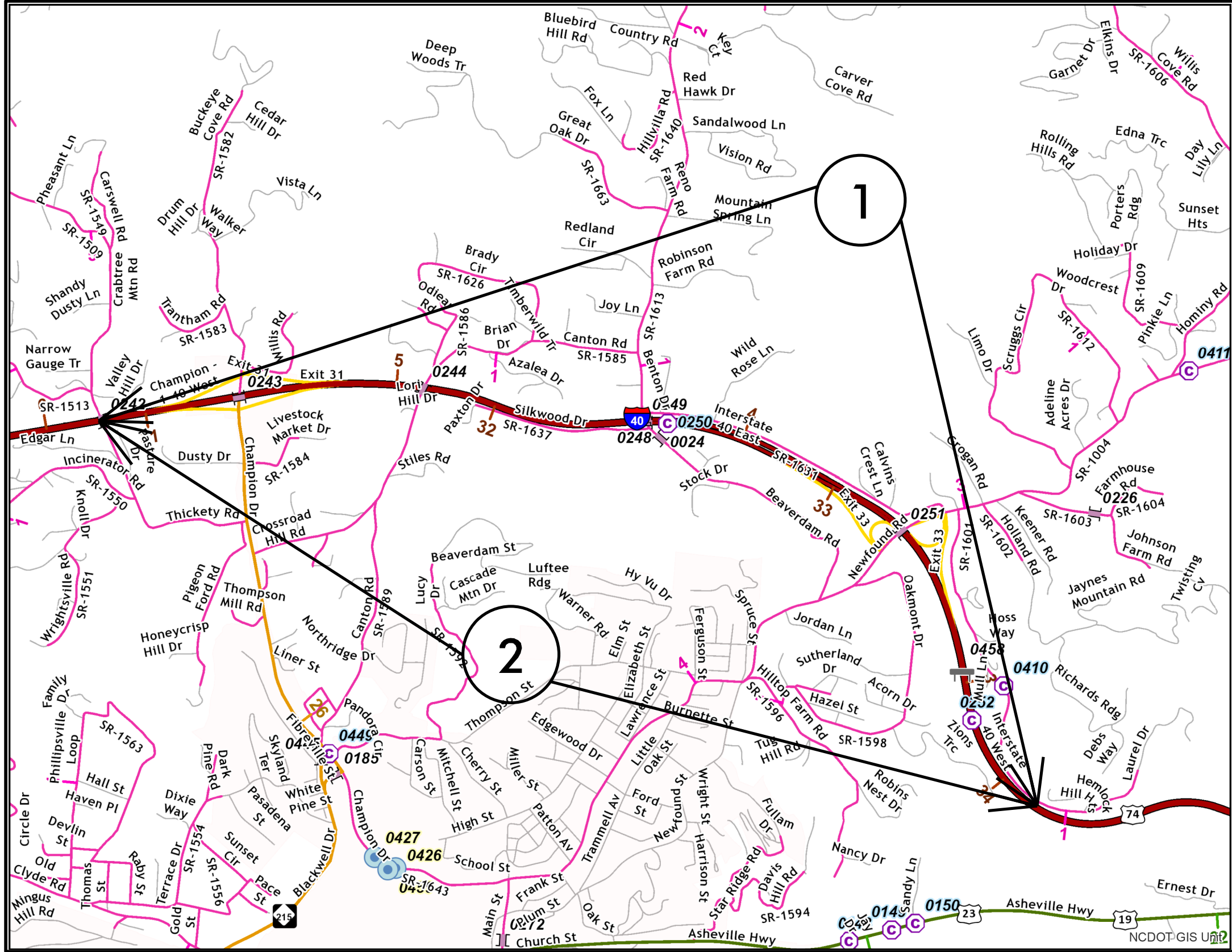


PROJECT REFERENCE NO.	SHEET NO.	
I-5834B	1	
STATE PROJECT	F.A. PROJECT NO.	DESCRIPTION
53040.3.3	0040112	

HAYWOOD COUNTY

TIP PROJECT: I5834B

CONTRACT: C204701



MAP 1



BEG

END

MAP 2



BEG

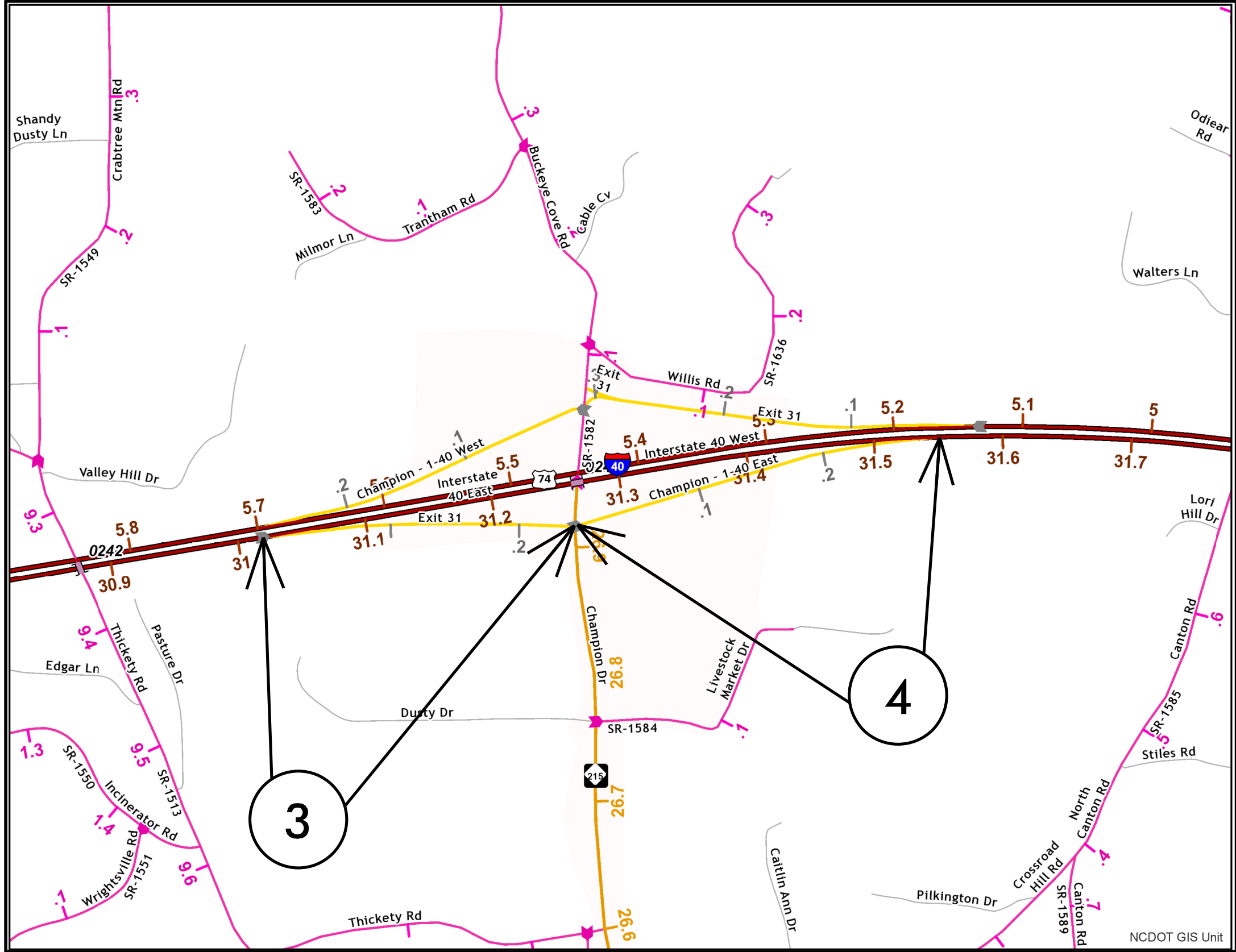
END

HAYWOOD COUNTY

PROJECT REFERENCE NO.		SHEET NO.
I-5834B		2
STATE PROJECT	F.A. PROJECT NO.	DESCRIPTION
53040.3.3	0040112	

TIP PROJECT: I5834B

CONTRACT: C204701



MAP 3



BEG



END

MAP 4



BEG



END

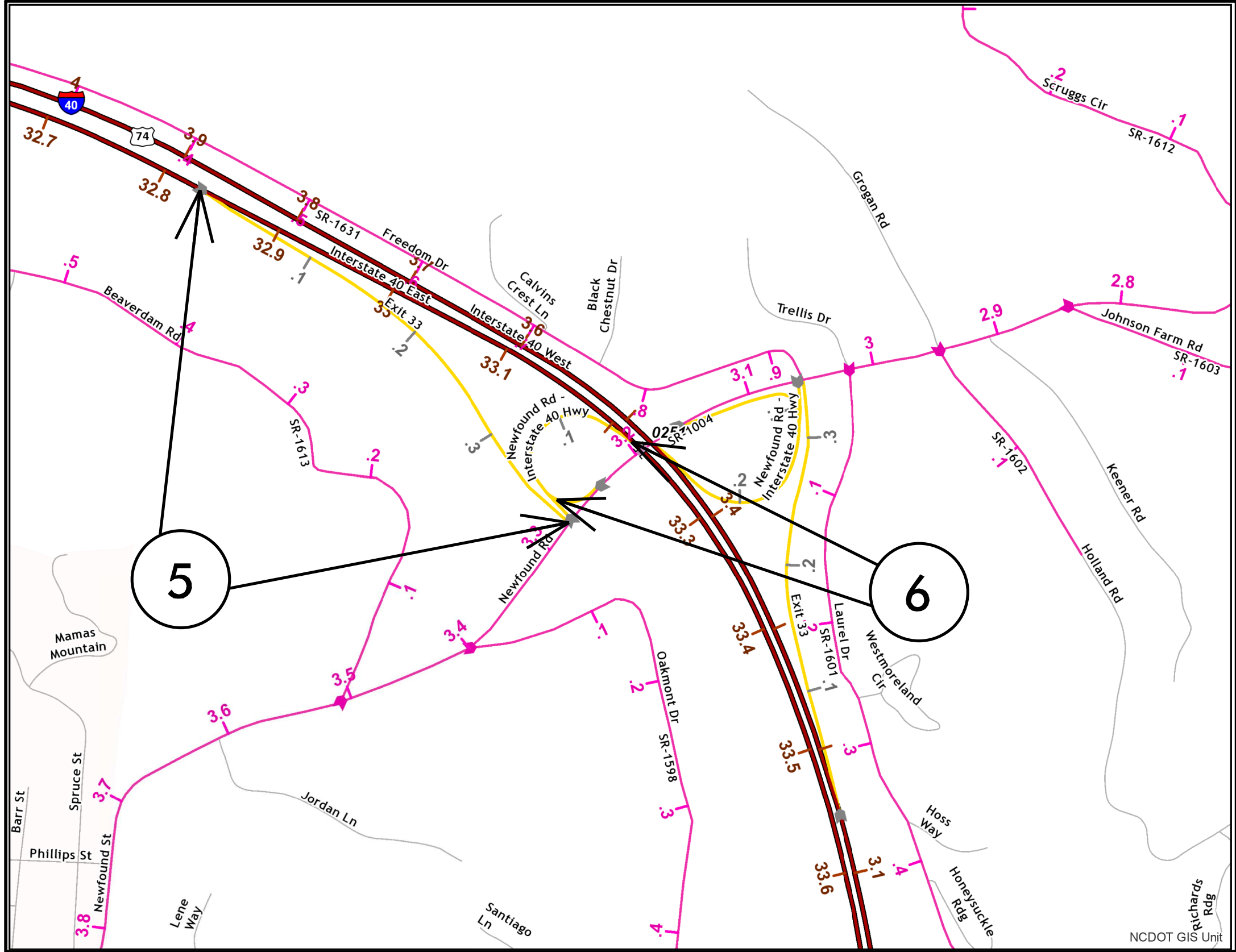


HAYWOOD COUNTY

PROJECT REFERENCE NO.		SHEET NO.
I-5834B		3
STATE PROJECT	F.A. PROJECT NO.	DESCRIPTION
53040.3.3	0040112	

TIP PROJECT: I5834B

CONTRACT: C204701



MAP 5



BEG



END

MAP 6



BEG



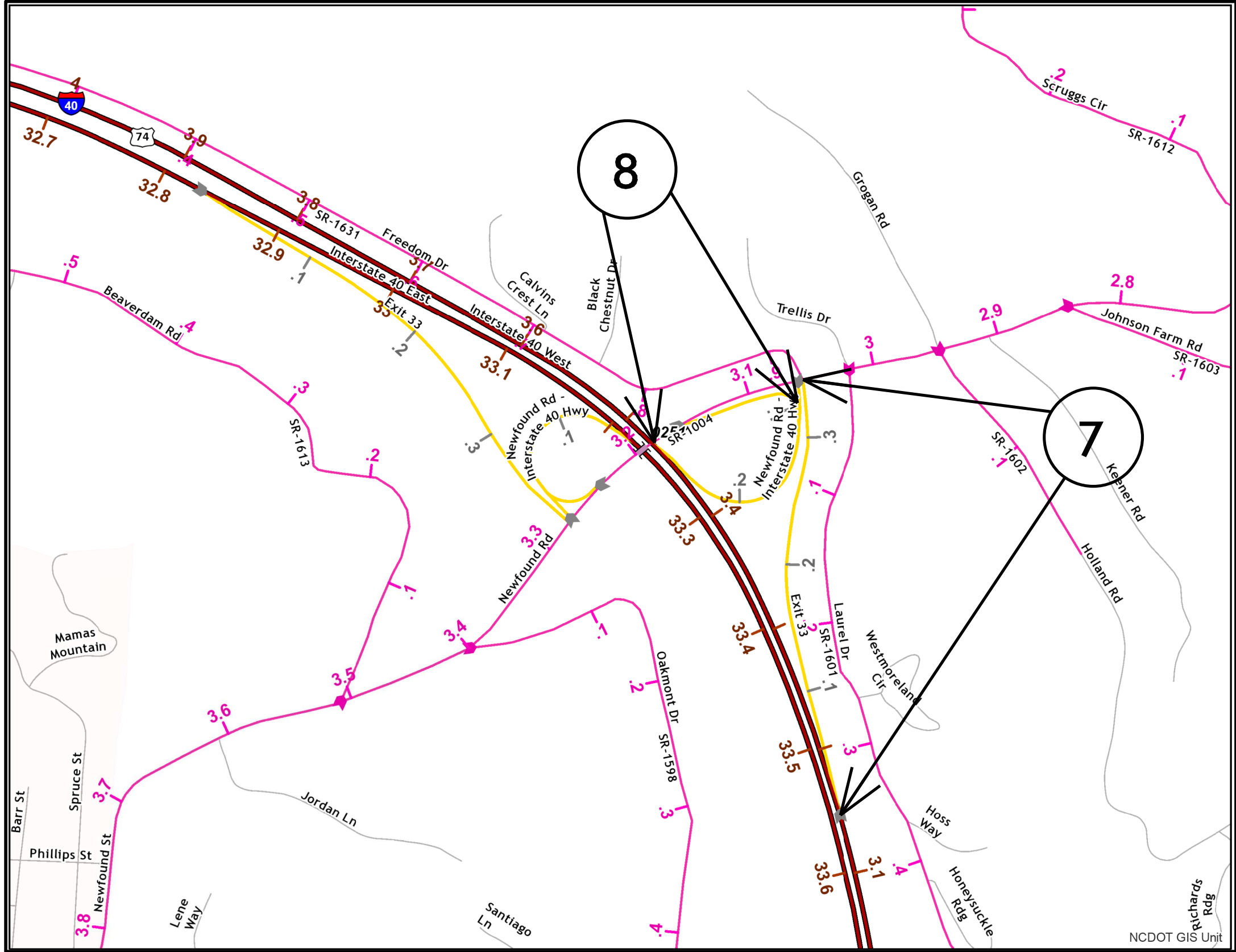
END

HAYWOOD COUNTY

PROJECT REFERENCE NO.		SHEET NO.
L-5834B		4
STATE PROJECT	F.A. PROJECT NO.	DESCRIPTION
53040.3.3	0040112	

TIP PROJECT: I5834B

CONTRACT: C204701



MAP 7



BEG



END

MAP 8



BEG



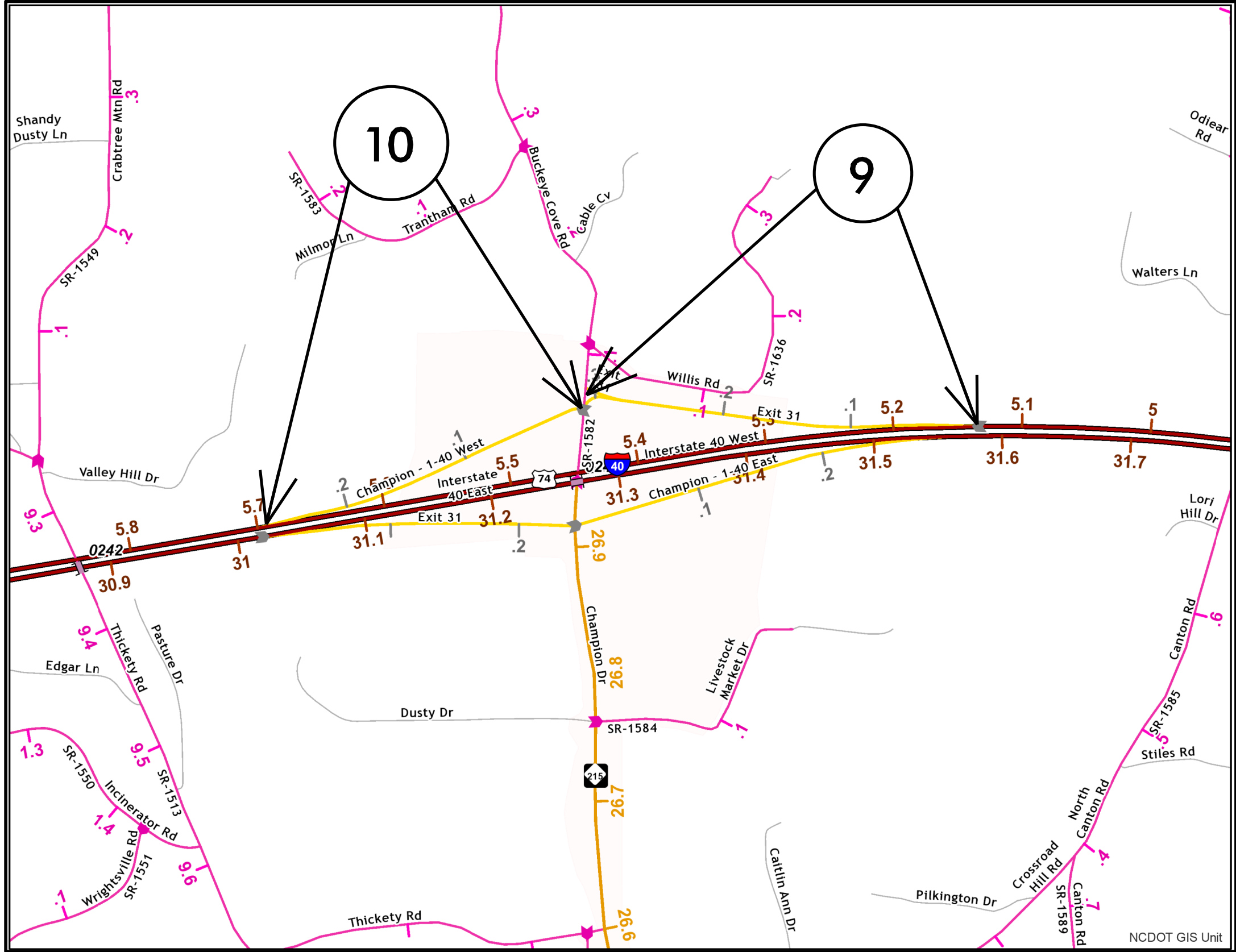
END

HAYWOOD COUNTY

PROJECT REFERENCE NO.		SHEET NO.
L-5834B		5
STATE PROJECT	F.A. PROJECT NO.	DESCRIPTION
53040.3.3	0040112	

TIP PROJECT: I5834B

CONTRACT: C204701



MAP 9



BEG



END

MAP 10

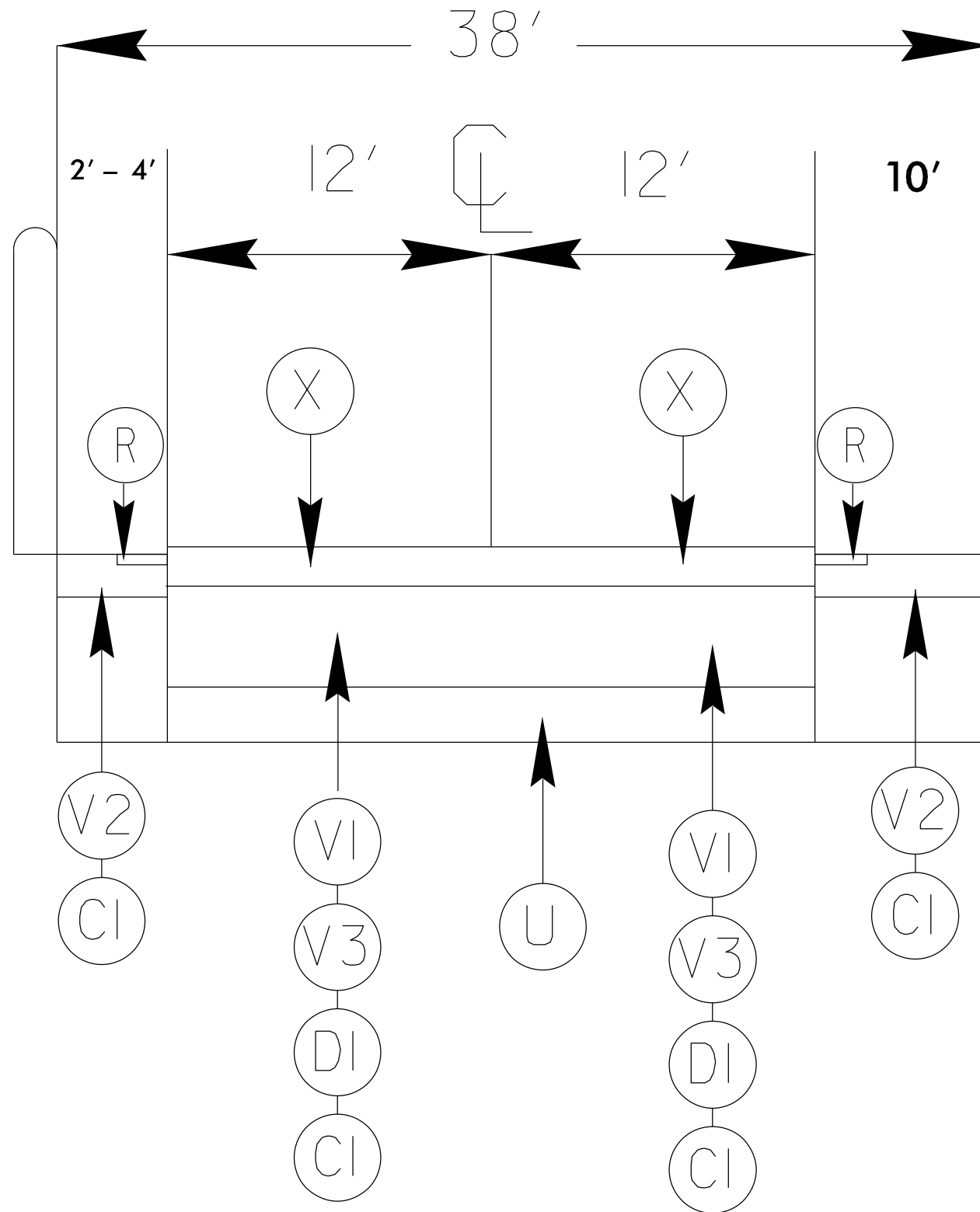


BEG



END

TYPICAL 1



SURFACING SCHEDULE

ITEM NO	DESCRIPTION
C1	PROP. APPROX. 1 1/2" ASPHALT CONCRETE SURFACE COURSE, TYPE S9.5D AT AN AVERAGE RATE OF 168 LBS.PER.SQ.YD
D1	PROP. APPROX. 3" ASPHALT CONCRETE INTERMEDIATE COURSE,TYPE I19.OC,AT A AVERAGE RATE OF 342 LBS PER SQ.YD.
V1	MILLED ASPHALT PAVEMENT 3/4" IN DEPTH IN LOCATIONS AS DIRECTED BY PROJECT ENGINEER
V2	MILLED ASPHALT PAVEMENT 1 1/2" IN DEPTH IN LOCATIONS AS DIRECTED BY PROJECT ENGINEER
V3	MILLED ASPHALT PAVEMENT 4 1/2" IN DEPTH IN LOCATIONS AS DIRECTED BY PROJECT ENGINEER
X	PROP. APPROX. 3/4" OPEN GRADE FRICTION COURSE, TYPE FC1 MOD AT A AVERAGE RATE OF 90 LBS PER SQ. YD.
R	MILLED RUMBLE STRIPS AS DIRECTED BY PROJECT ENGINEER
U	EXISTING ASPHALT

TYPICAL 2

