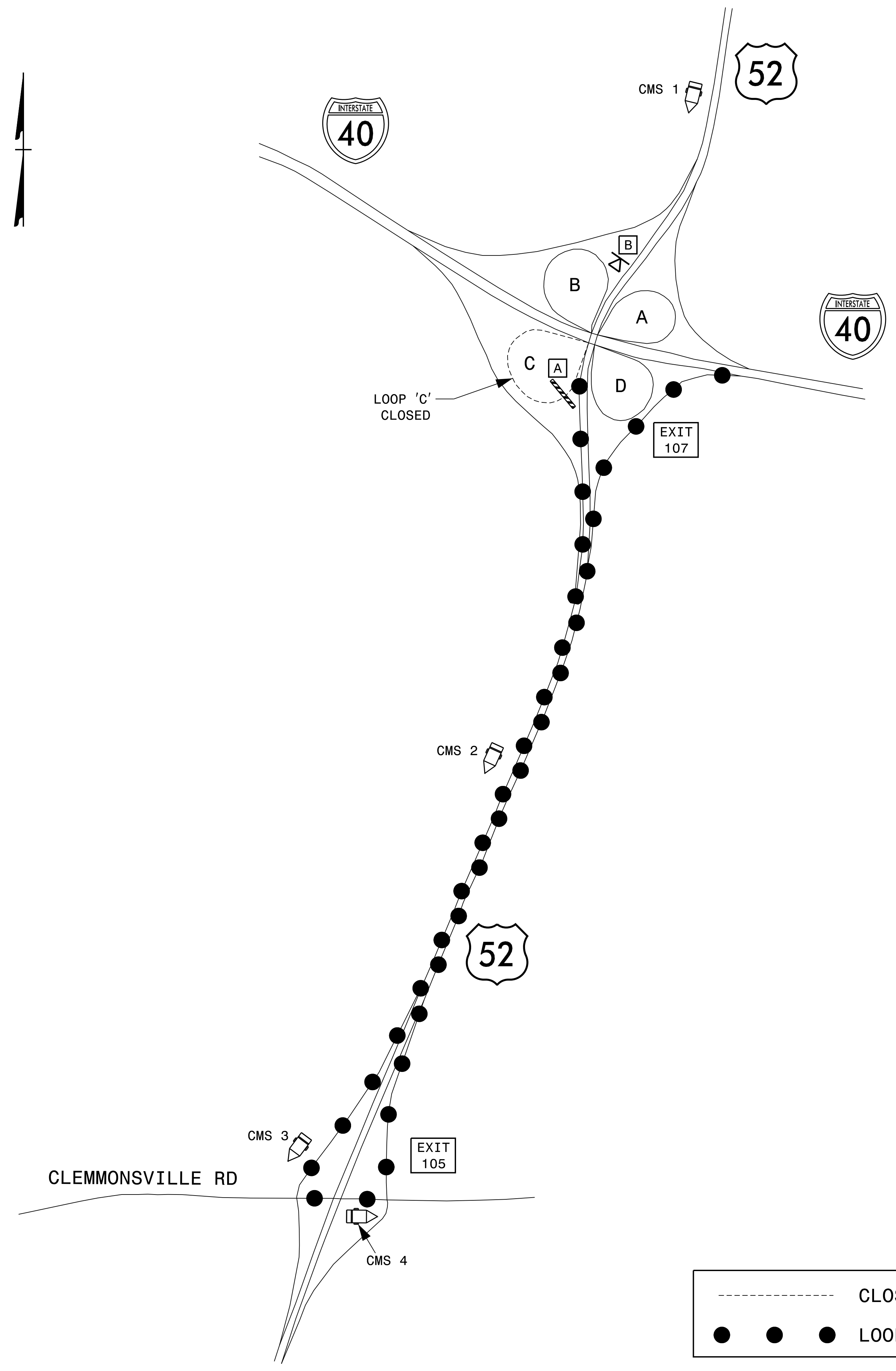


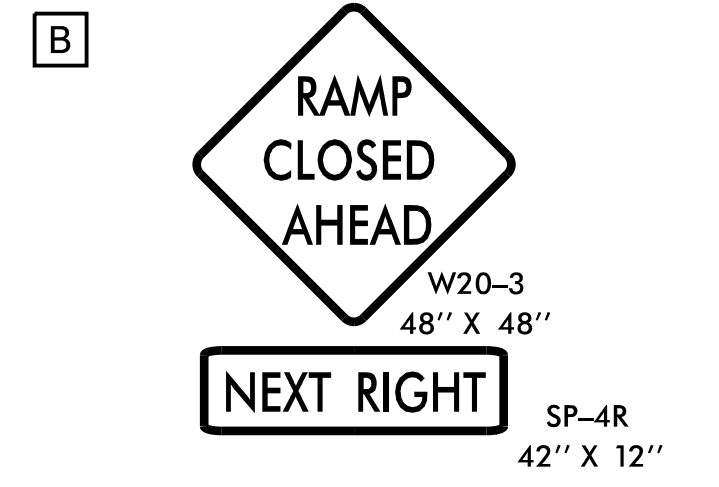
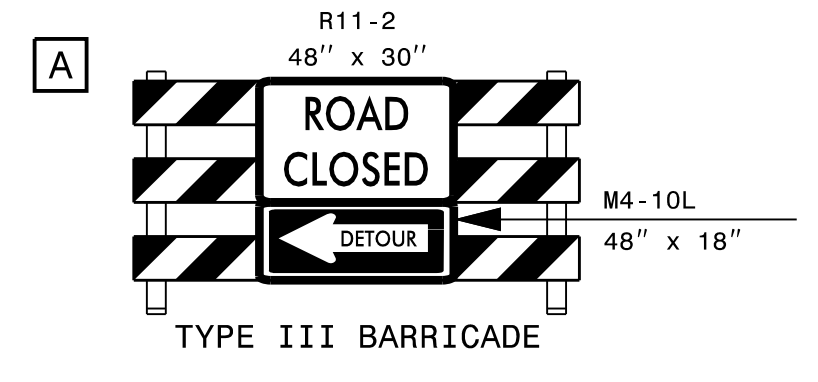
PLOT DRIVER: NCDOT_pdf_color_eng_50.pit
 USER: BSCOTT
 FILE: p:\p\hndr\users\01\HDR_US_East_01\Documents\3322\1032846\16.0_CAD_BIM\6.2_WIP\Traffic\TrafficControl\TCP\Sfr\330078_330078_TC_TMP-10.dgn

REVISIONS



PROJ. REFERENCE NO.	SHEET NO.
15BPR.55	TMP-10

HDR HDR Engineering, Inc. of the Carolinas
 555 Fayetteville St, Suite 900 Raleigh, N.C. 27601
 N.C.B.E.L.S. License Number: F-0116



CMS 1

MESSAGE NO. 1	MESSAGE NO. 2
I-40 E EXIT CLOSED	FOLLOW DETOUR AHEAD

CHANGEABLE MESSAGE SIGN

CMS 2

MESSAGE NO. 1	MESSAGE NO. 2
I-40 EAST DETOUR	USE EXIT 105

CHANGEABLE MESSAGE SIGN

CMS 3 & 4

MESSAGE NO. 1	MESSAGE NO. 2
I-40 E DETOUR <-----	I-40 E DETOUR <-----

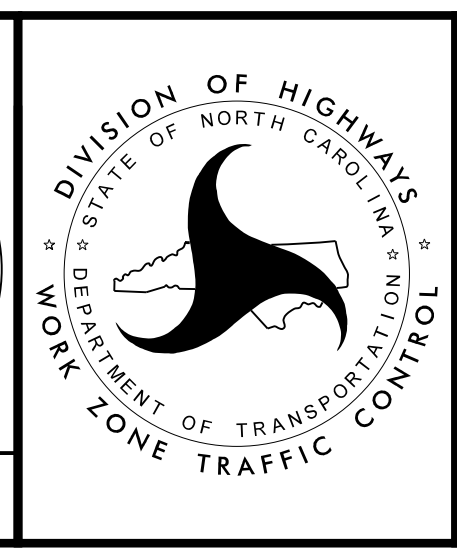
CHANGEABLE MESSAGE SIGN

NOTES:
 1. CMS PLACEMENT & MESSAGE AT THE DISCRETION OF THE ENGINEER.
 2. DELINEATE CMS BOARD WITH DRUMS.

APPROVED: *Michael T. Rzepka*
 DATE: 1/14/2022

SEAL

**DOCUMENT NOT CONSIDERED FINAL
 UNLESS ALL SIGNATURES COMPLETED**



BRIDGE # 330078

US 52
 LOOP 'C'
 OVERNIGHT CLOSURE

