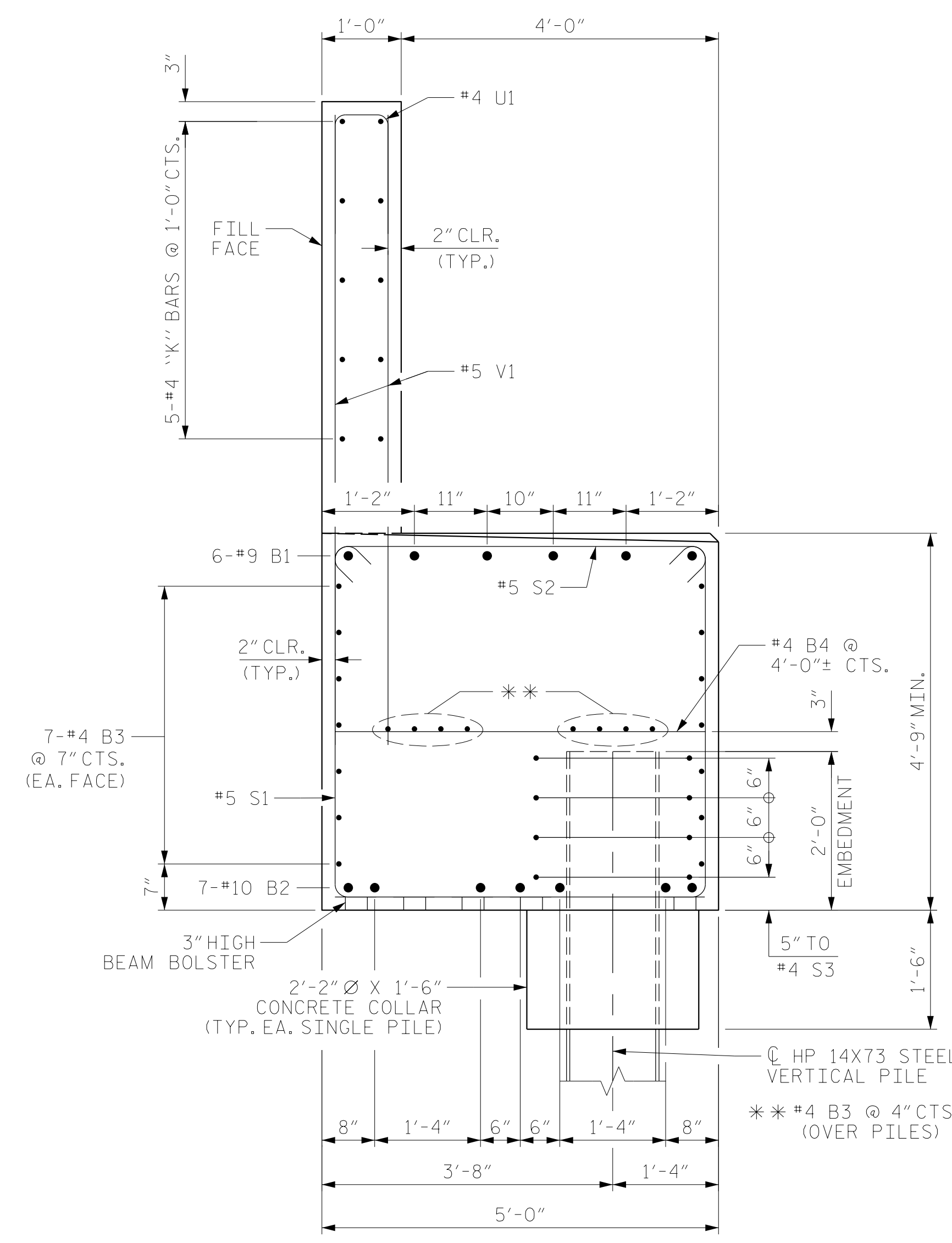


BAGGED STONE AND PIPE SHALL BE PLACED IMMEDIATELY AFTER COMPLETION OF END BENT EXCAVATION. PIPE MAY BE EITHER CONCRETE, CORRUGATED STEEL, CORRUGATED ALUMINUM ALLOY, OR CORRUGATED PLASTIC. PERFORATED PIPE WILL NOT BE ALLOWED.

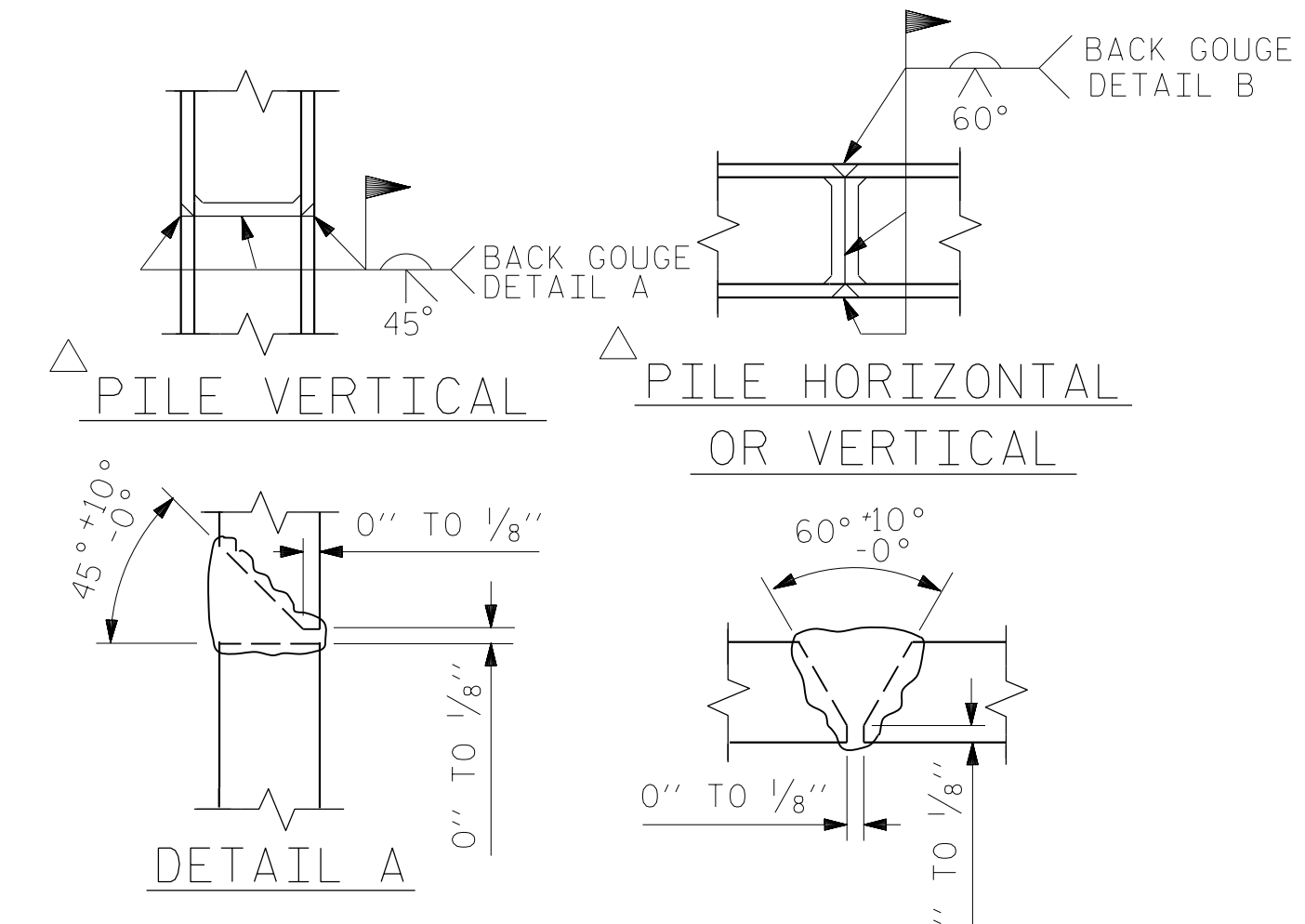
BAGGED STONE SHALL REMAIN IN PLACE UNTIL THE ENGINEER DIRECTS THAT IT BE REMOVED. THE CONTRACTOR SHALL REMOVE AND DISPOSE OF SILT ACCUMULATIONS AT BAGGED STONE WHEN SO DIRECTED BY THE ENGINEER. BAGS SHALL BE REMOVED AND REPLACED WHENEVER THE ENGINEER DETERMINES THAT THEY HAVE DETERIORATED AND LOST THEIR EFFECTIVENESS.

NO SEPARATE PAYMENT WILL BE MADE FOR THIS WORK AND THE ENTIRE COST OF THIS WORK SHALL BE INCLUDED IN THE UNIT CONTRACT PRICE BID FOR THE SEVERAL PAY ITEMS.

TEMPORARY DRAINAGE AT END BENT

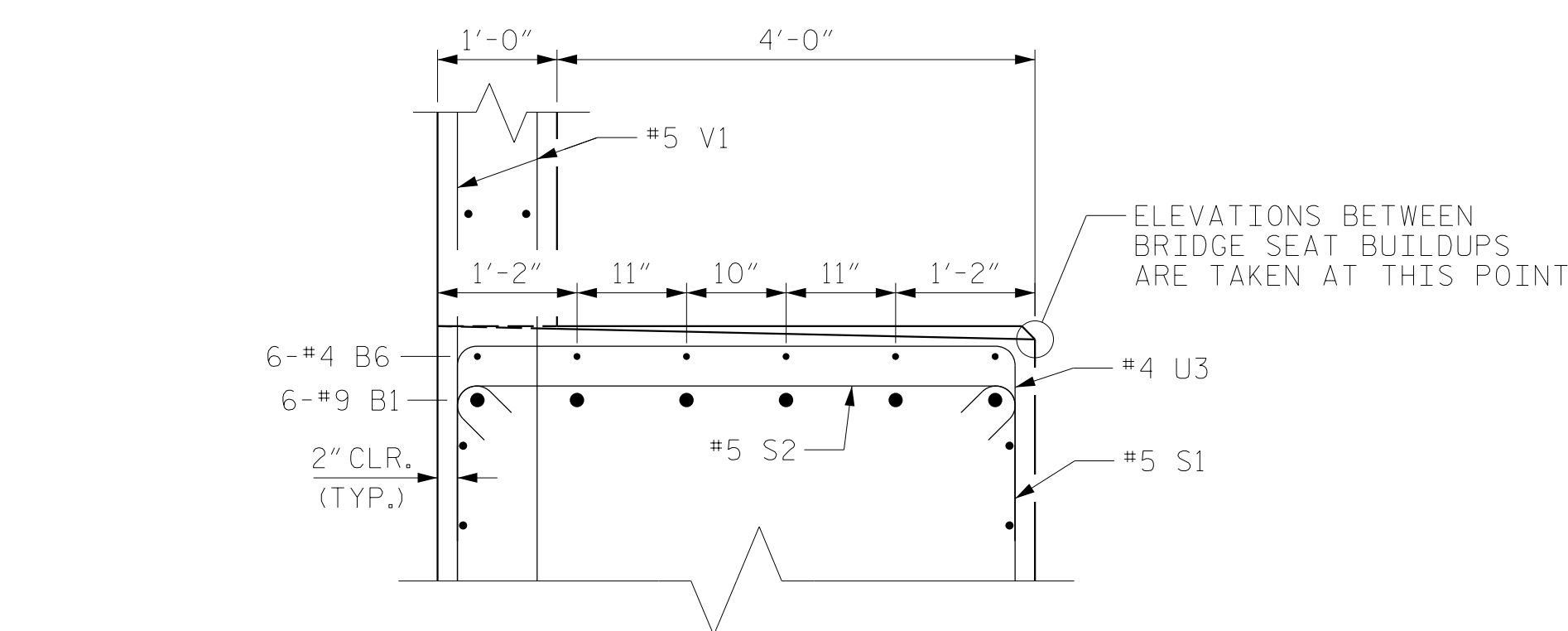


SECTION A-A

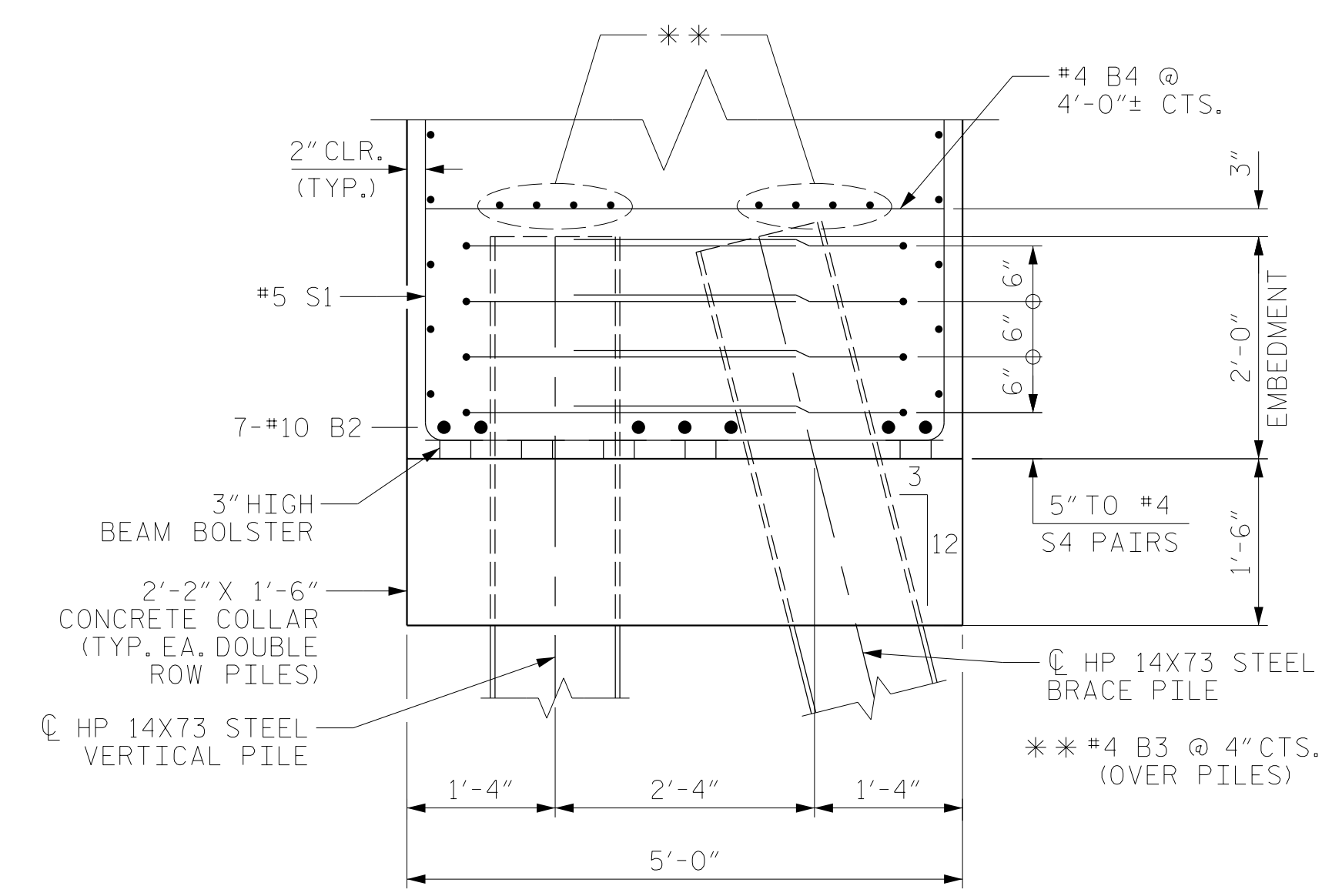


△ POSITION OF PILE DURING WELDING.

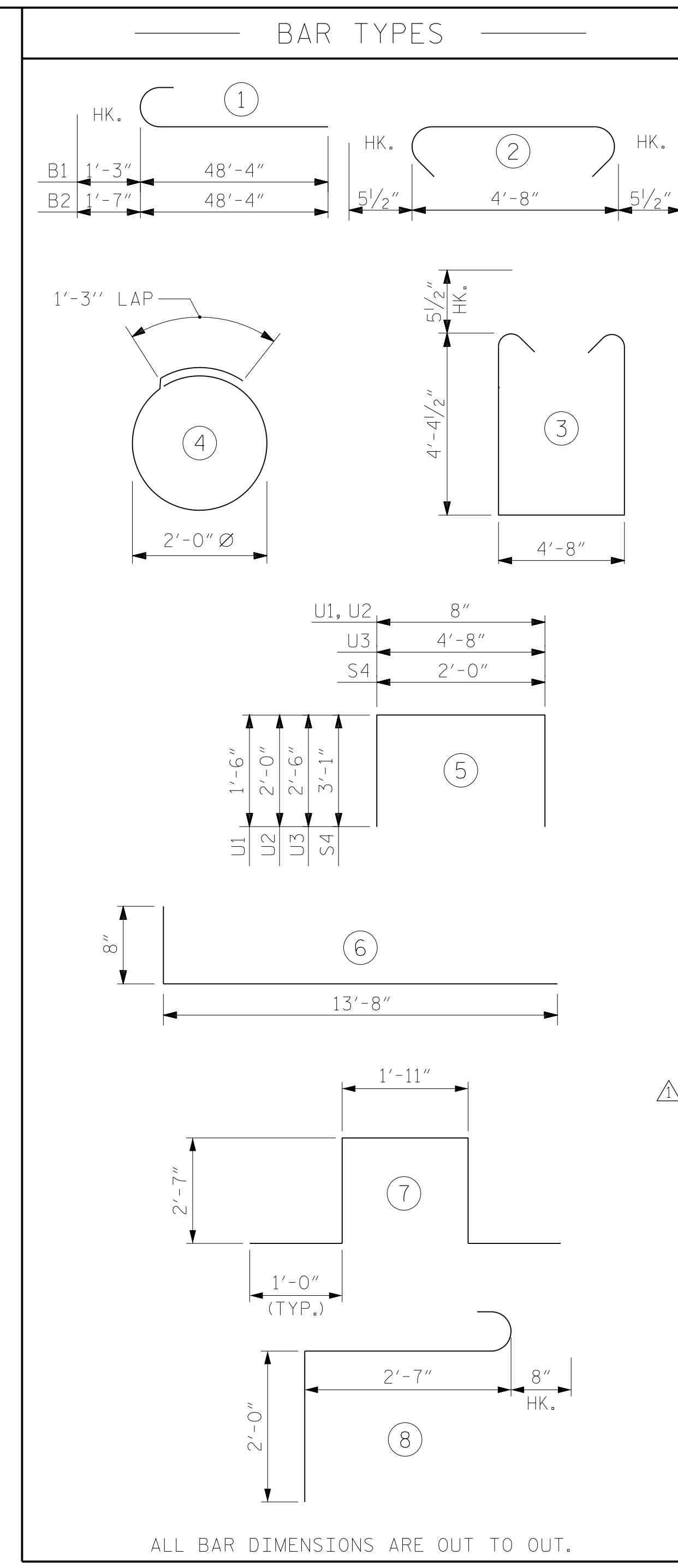
PILE SPLICE DETAILS



PARTIAL SECTION B-B



PARTIAL SECTION C-C



ALL BAR DIMENSIONS ARE OUT TO OUT.

BILL OF MATERIAL

END BENT NO. 2

BAR NO.	NO.	SIZE	TYPE	LENGTH	WEIGHT
B1	6	#9	1	49'-7"	1012
B2	7	#10	1	49'-9"	1499
B3	44	#4	STR	25'-5"	747
B4	13	#4	STR	4'-8"	41
B5	6	#4	STR	15'-9"	63
B6	6	#4	STR	13'-6"	54
H1	24	#4	6	14'-4"	230
K1	20	#4	STR	25'-4"	338
K2	4	#4	STR	3'-10"	10
S1	69	#5	3	14'-4"	1032
S2	69	#5	2	5'-7"	402
S3	12	#4	4	7'-7"	61
S4	24	#4	5	8'-2"	131
S5	3	#6	7	9'-1"	41
S6	3	#6	8	5'-3"	24
U1	40	#4	5	3'-8"	98
U2	5	#4	5	4'-8"	16
U3	19	#4	5	9'-8"	123
V1	80	#5	STR	9'-0"	751
V2	46	#5	STR	11'-1"	532

REINFORCING STEEL 7,205 LBS.
CLASS A CONCRETE

POUR #1
CAP AND LOWER PART OF WING 48.0 C.Y.

POUR #2
UPPER PART OF WING AND BACKWALL 13.0 C.Y.

TOTAL CLASS A CONCRETE 61.0 C.Y.

HP 14 X 73 STEEL PILES NO. 10 700.0 LIN. FT.

PILE DRIVING EQUIPMENT SETUP FOR HP 14X73 STEEL PILES NO. 10

PILE REDRIVES (FOR ONE END BENT) NO. 5

PROJECT NO. U-5798A
CUMBERLAND COUNTY
STATION: 76+80.00 -L-

SHEET 3 OF 3

STATE OF NORTH CAROLINA
DEPARTMENT OF TRANSPORTATION
RALEIGH
SUBSTRUCTURE
END BENT 2
DETAILS
RIGHT LANE

REVISIONS

NO.	BY:	DATE:	NO.	BY:	DATE:
1	NSC	03/2022	3		
2			4		

SHEET NO. S2-39
TOTAL SHEETS 43

RS&H Architects-Engineers-Planners, Inc.
8521 Six Forks Road, Suite 400
919-926-4100 FAX 919-846-9080
www.rsandh.com
North Carolina License No. 00737-0403-1-C28

DRAWN BY : NSC DATE : 03/2020
CHECKED BY : MRA DATE : 04/2021
DESIGN ENGINEER OF RECORD: RLB DATE : 09/2021

DOCUMENT NOT CONSIDERED FINAL UNLESS ALL SIGNATURES COMPLETED

△ REVISED HP 14X73 STEEL PILE COUNT AND LENGTH