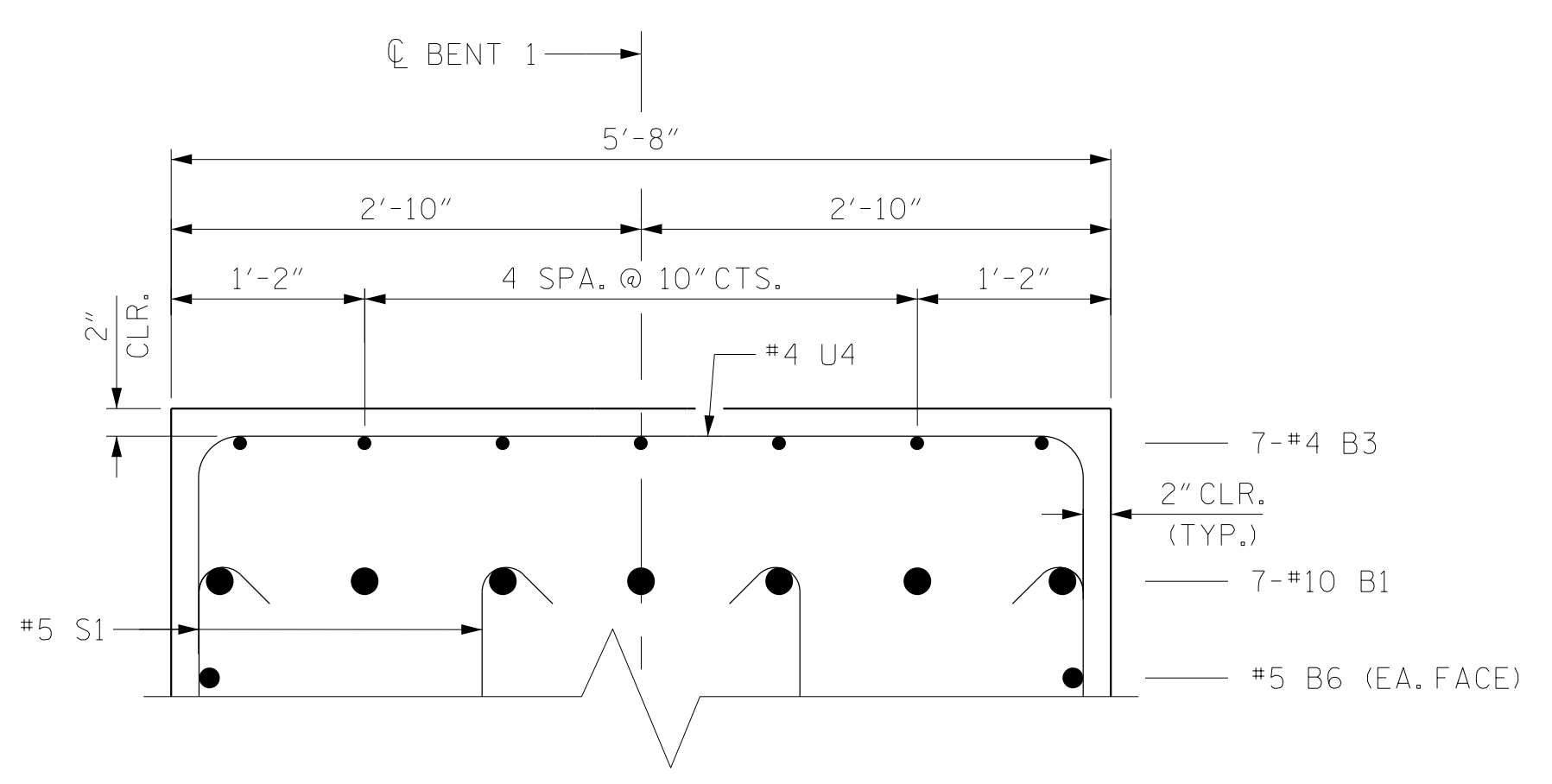
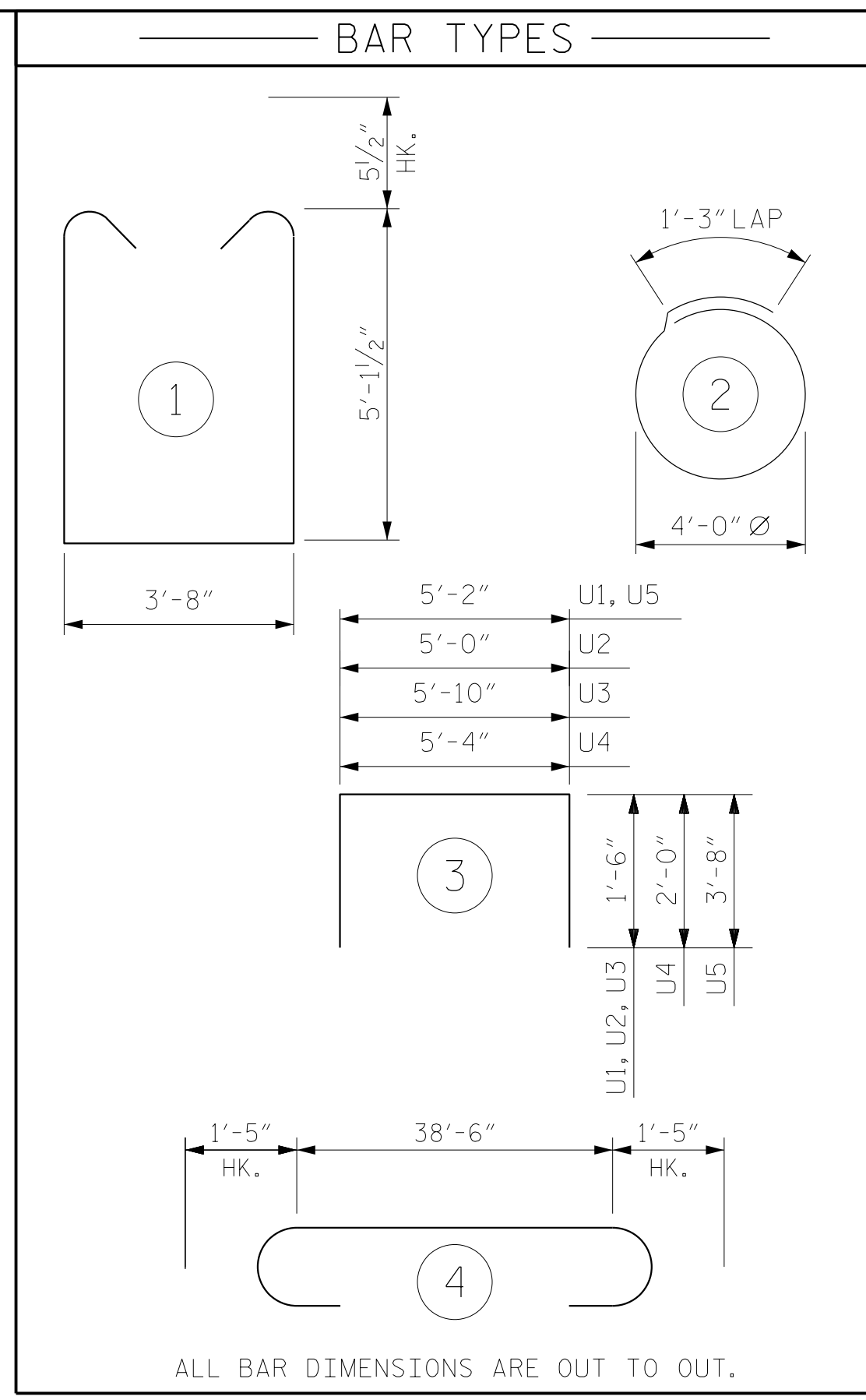


SECTION A-A

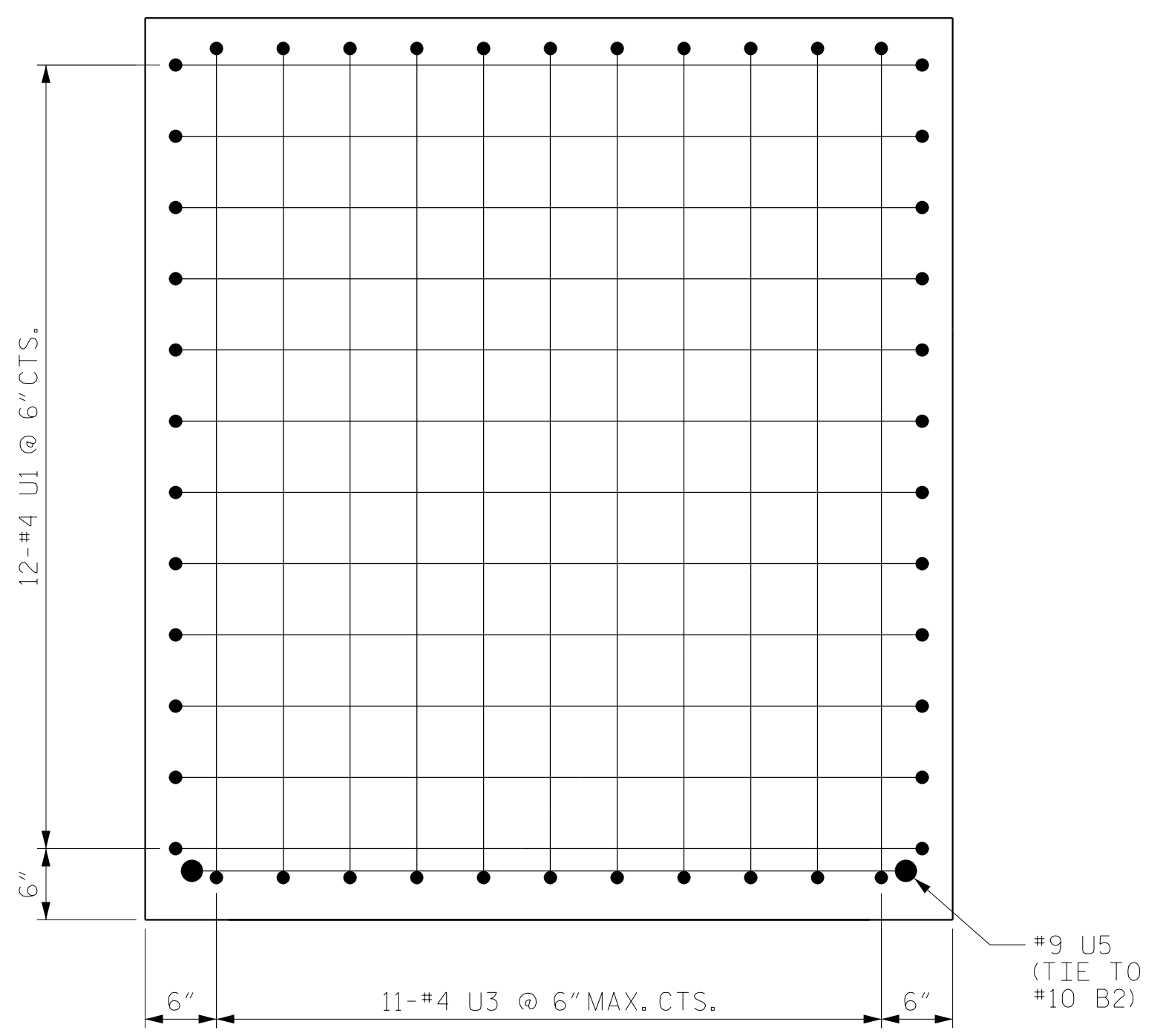


PARTIAL SECTION B-B

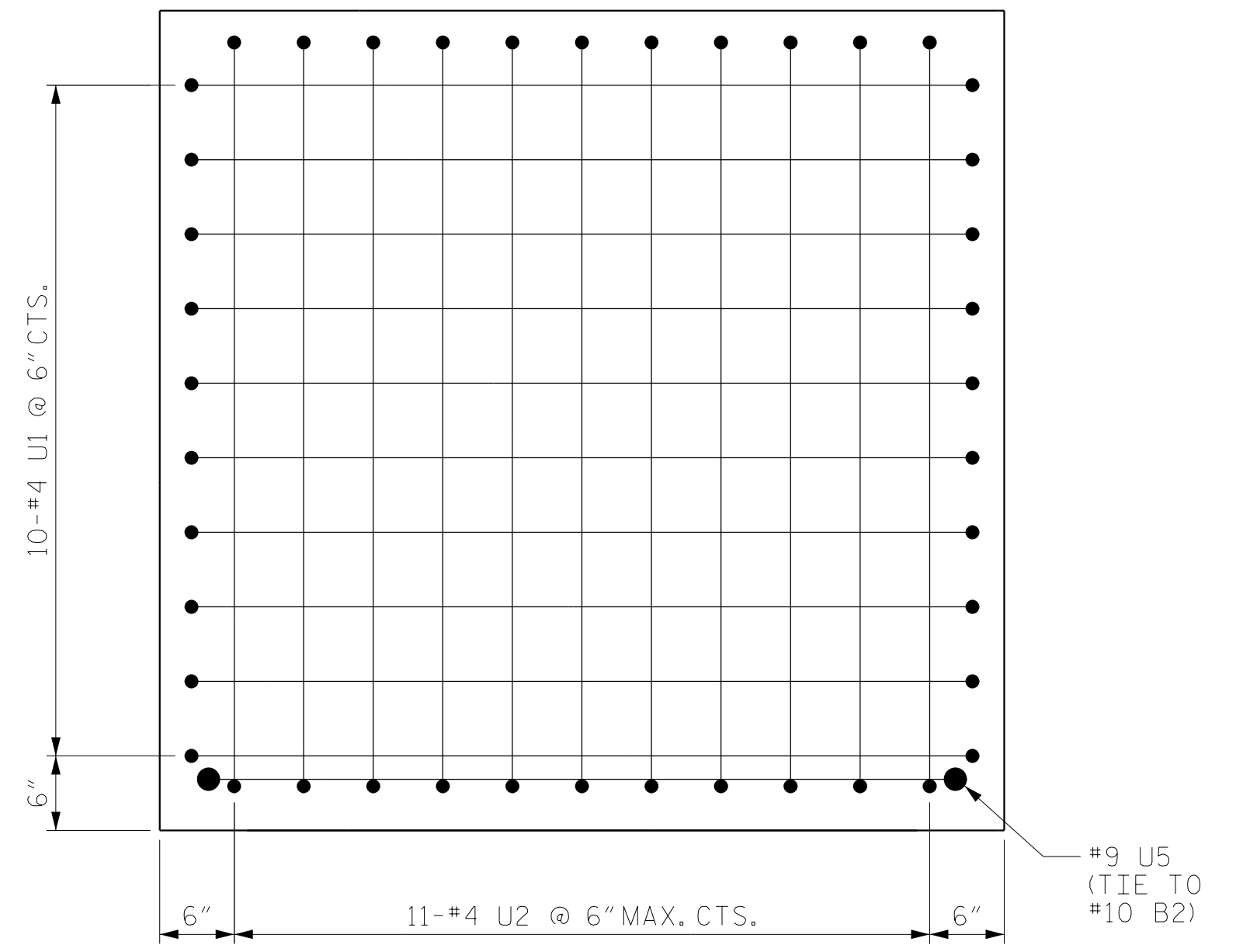


ALL BAR DIMENSIONS ARE OUT TO OUT.

BILL OF MATERIAL FOR BENT 1						
BAR	NO.	SIZE	TYPE	LENGTH	WEIGHT	
B1	7	#10	4	41'-4"	1245	
B2	6	#10	STR.	38'-8"	998	
B3	14	#4	STR.	11'-1"	104	
B4	7	#4	STR.	5'-2"	24	
B5	12	#5	STR.	5'-0"	63	
B6	10	#5	STR.	38'-8"	403	
B7	11	#4	STR.	5'-4"	39	
B8	5	#4	STR.	38'-8"	129	
S1	80	#5	1	14'-10"	1238	
S2	20	#4	2	13'-10"	185	
U1	22	#4	3	8'-2"	120	
U2	11	#4	3	8'-0"	59	
U3	11	#4	3	8'-10"	65	
U4	48	#4	3	9'-4"	299	
U5	2	#9	3	12'-6"	85	
REINFORCING STEEL					5,056 LBS.	
▲ CLASS A CONCRETE					45.3 C.Y.	
PP 36 X 0.50 GALVANIZED STEEL PILES						
BENT NO. 1		NO. 5		600.0 LIN. FT.		
PILE DRIVING EQUIPMENT SETUP FOR PP 36 X 0.50 GALVANIZED STEEL PILES						NO. 5
PILE REDRIVES						NO. 3
▲ CONCRETE DISPLACED BY THE PP 36 X 0.50 GALVANIZED STEEL PIPE PILES HAS BEEN DEDUCTED FROM THE CONCRETE QUANTITY.						



VIEW C-C



VIEW D-D

DRAWN BY : TWL DATE : 04/2021
 CHECKED BY : MRA DATE : 04/2021
 DESIGN ENGINEER OF RECORD: RLB DATE : 09/2021

DOCUMENT NOT CONSIDERED FINAL UNLESS ALL SIGNATURES COMPLETED

PROJECT NO. U-5798A
 CUMBERLAND COUNTY
 STATION: 76+80.00 -L-

SHEET 2 OF 3
 STATE OF NORTH CAROLINA
 DEPARTMENT OF TRANSPORTATION
 RALEIGH
 SUBSTRUCTURE
 BENT 1
 DETAILS
 RIGHT LANE

REVISIONS						SHEET NO.
NO.	BY:	DATE:	NO.	BY:	DATE:	S2-35
1			3			TOTAL SHEETS
2			4			43