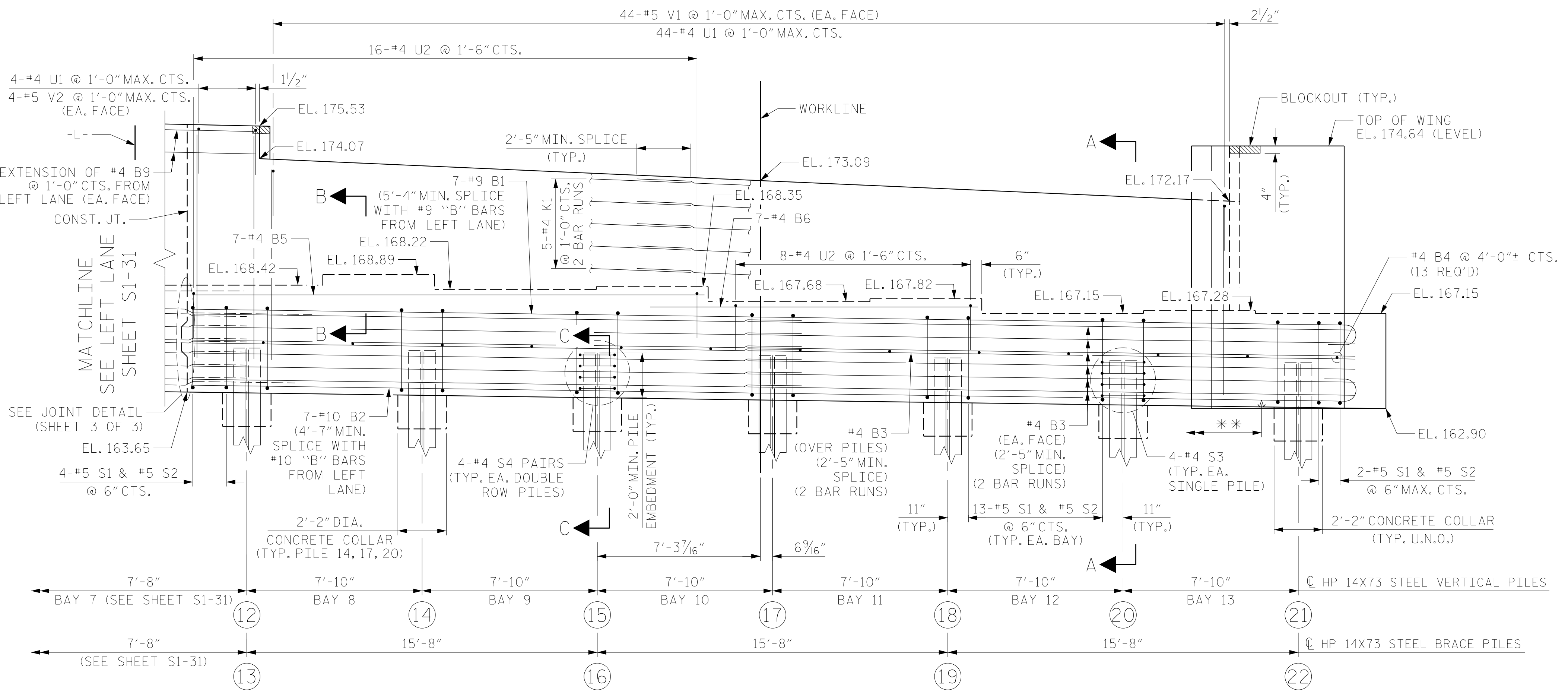


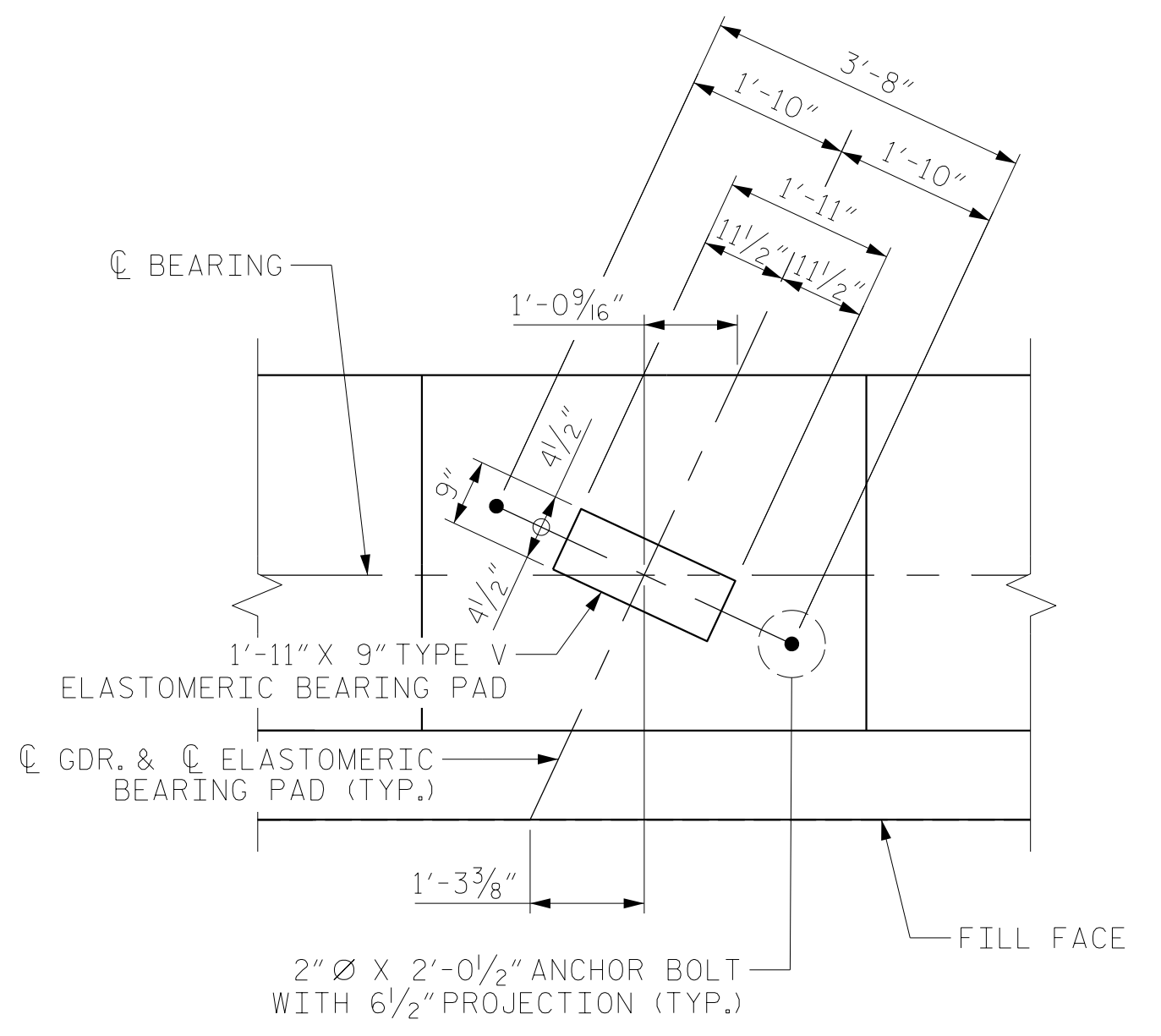
PARTIAL PLAN



PARTIAL ELEVATION

NOTES:

- FOR SECTION A-A, PARTIAL SECTION B-B, AND PARTIAL SECTION C-C, SEE SHEET 3 OF 3.
- STIRRUPS AND U2 BARS IN CAP MAY BE SHIFTED, AS NECESSARY, TO CLEAR ANCHOR BOLTS.
- BACKWALL SHALL BE PLACED BEFORE APPLYING THE EPOXY PROTECTIVE COATING.
- THE TOP SURFACE OF THE END BENT CAP SHALL BE CURED IN ACCORDANCE WITH THE STANDARD SPECIFICATION, EXCEPT THE MEMBRANE CURING COMPOUND METHOD SHALL NOT BE USED.
- THE TOP SURFACE AREA OF THE END BENT CAP EXCEPT THE BRIDGE SEAT BUILDUPS SHALL BE SLOPED TRANSVERSELY FROM THE FILL FACE TO THE FRONT FACE AT THE RATE OF 2%.
- THE CONCRETE IN THE SHADED AREA OF THE WING SHALL BE POURED AFTER THE PARAPET IS CAST IF SLIP FORMING IS USED.



DETAIL "A"

PILES NOT SHOWN FOR CLARITY

TOP OF PILE ELEVATIONS						
PILE 12	PILE 14	PILE 15	PILE 17	PILE 18	PILE 20	PILE 21
165.61	165.50	165.39	165.28	165.18	165.07	164.96
PILE 13	PILE 16		PILE 19	PILE 22		
165.61	165.39		165.18	164.96		

PROJECT NO. U-5798A
 CUMBERLAND COUNTY
 STATION: 76+80.00 -L-

SHEET 1 OF 3



RS&H
 RS&H Architects-Engineers-Planners, Inc.
 8521 Six Forks Road, Suite 400
 919-926-4100 FAX 919-846-9080
 www.rsandh.com
 North Carolina License No. 50737-50403-C&E

STATE OF NORTH CAROLINA
 DEPARTMENT OF TRANSPORTATION
 RALEIGH
 SUBSTRUCTURE
 END BENT 1 PARTIAL
 PLAN AND ELEVATION
 RIGHT LANE

REVISIONS						SHEET NO.
NO.	BY:	DATE:	NO.	BY:	DATE:	S2-31
1			3			TOTAL SHEETS 43
2			4			

DRAWN BY : NSC DATE : 03/2020
 CHECKED BY : MKO DATE : 04/2021
 DESIGN ENGINEER OF RECORD: RLB DATE : 09/2021

DOCUMENT NOT CONSIDERED FINAL UNLESS ALL SIGNATURES COMPLETED