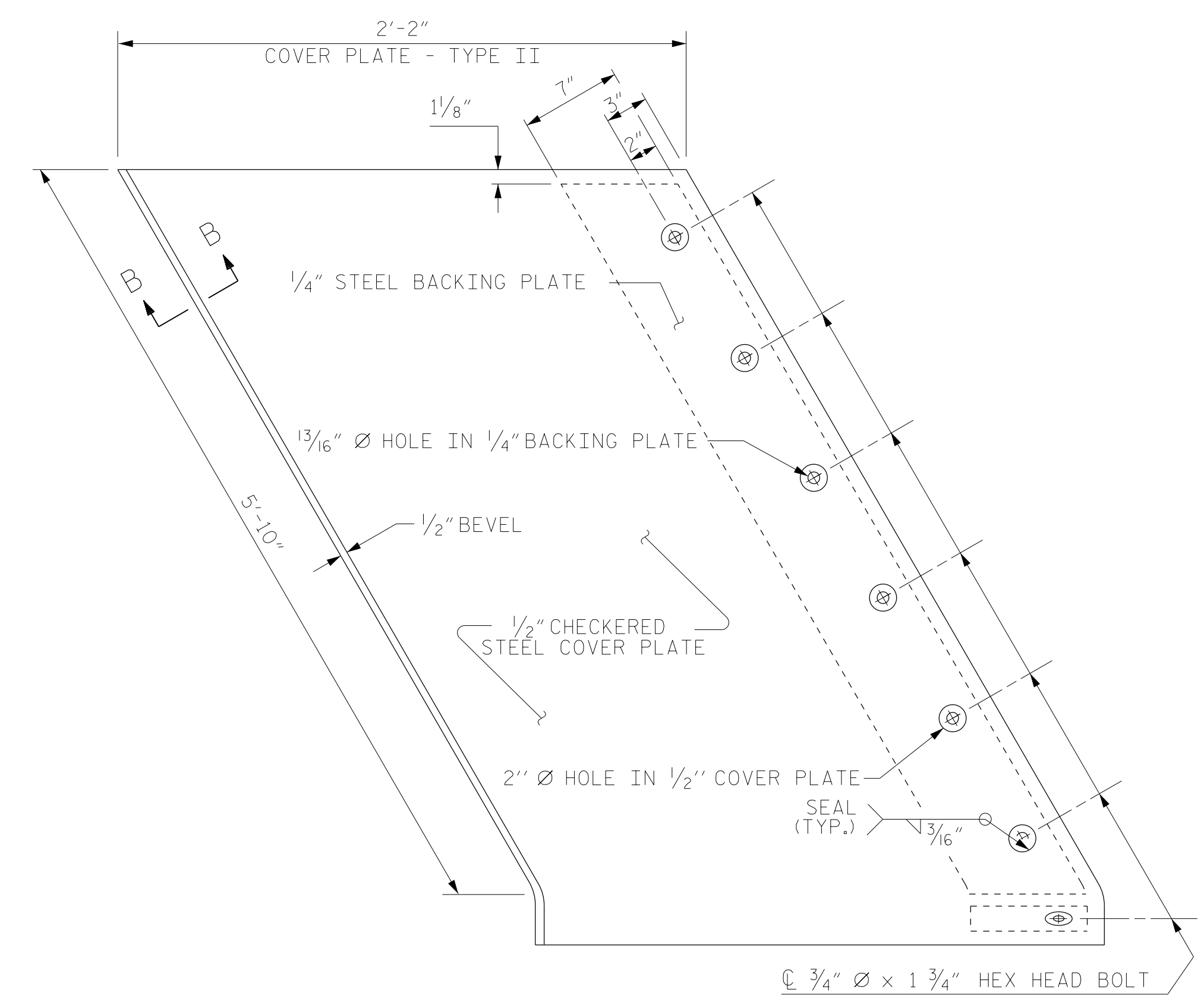
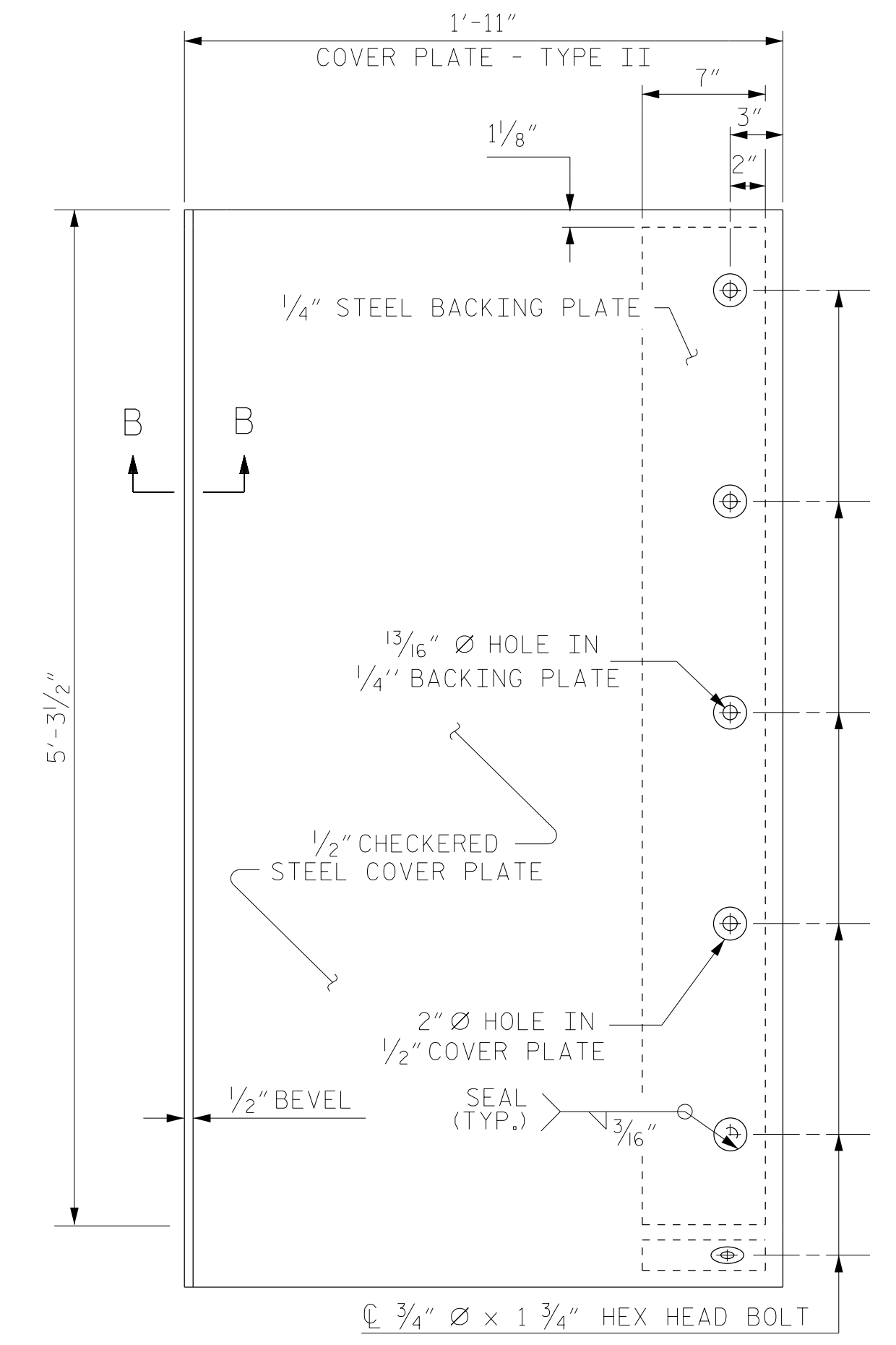


END VIEW
(NORMAL TO SIDEWALK)

* CONCRETE RECESS DIMENSIONS:
 1 3/16 inch FOR THE SIDE OF THE JOINT HAVING THE 1/2 inch COVER PLATE WITH A 1/4 inch BACKING PLATE.
 9/16 inch FOR THE SIDE OF THE JOINT HAVING ONLY THE 1/2 inch COVER PLATE.

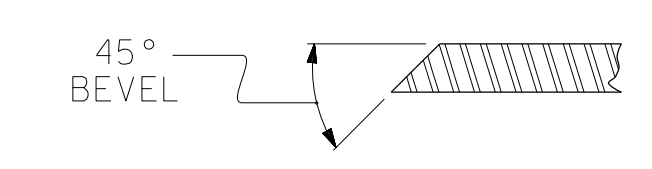


TYPE II - PLAN VIEW
END BENT 1

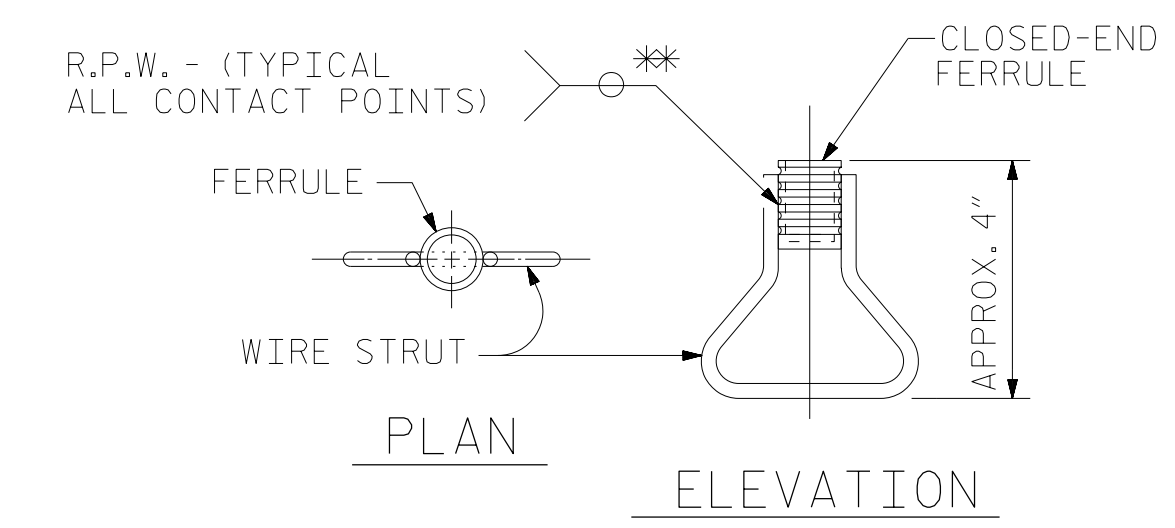


TYPE II - PLAN VIEW
END BENT 2

COVER PLATE DETAILS

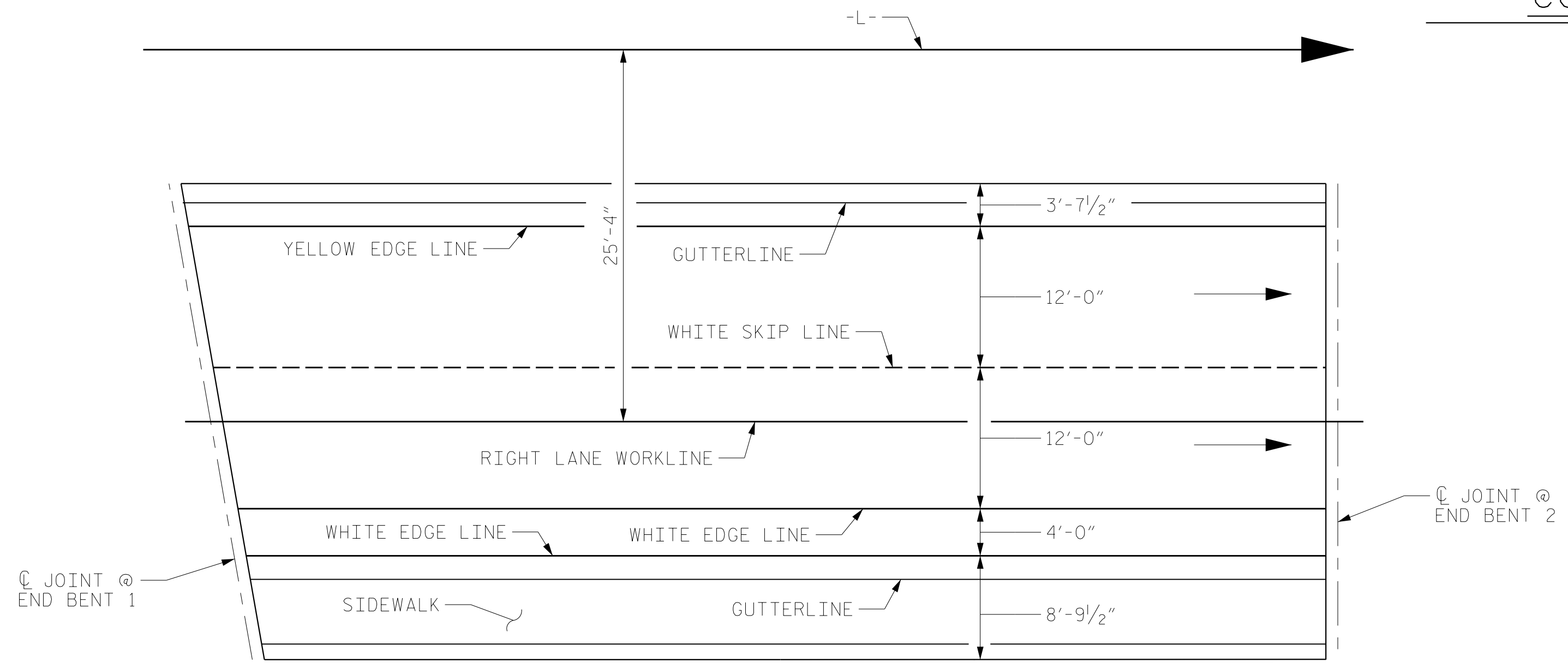


SECTION B - B



CONCRETE INSERT

* EACH WELDED ATTACHMENT OF WIRE TO FERRULE SHALL DEVELOP THE TENSILE STRENGTH OF THE WIRE.



PAVEMENT MARKING ALIGNMENT

PROJECT NO. U-5798A
 CUMBERLAND COUNTY
 STATION: 76+80.00 -L-

SHEET 4 OF 4



RS&H
 RS&H Architects-Engineers-Planners, Inc.
 8521 Six Forks Road, Suite 400
 919-926-4100 FAX 919-846-9080
 www.rsandh.com
 North Carolina License No. 50737-5463-C&E

STATE OF NORTH CAROLINA
 DEPARTMENT OF TRANSPORTATION
 RALEIGH
 STANDARD
 EXPANSION JOINT
 SEAL DETAILS
 FOR SIDEWALK
 RIGHT LANE

REVISIONS						SHEET NO.
NO.	BY:	DATE:	NO.	BY:	DATE:	S2-29
1			3			TOTAL SHEETS
2			4			43

ASSEMBLED BY : NSC	DATE : 04/2020
CHECKED BY : MRA	DATE : 05/2020
DRAWN BY : REK 10/87	REV. 5/1/06 TLA/GM
CHECKED BY : CRK 1/88	REV. 10/1/11 MAA/GM
	REV. 12/17 MAA/THC

DOCUMENT NOT CONSIDERED
 FINAL UNLESS ALL
 SIGNATURES COMPLETED