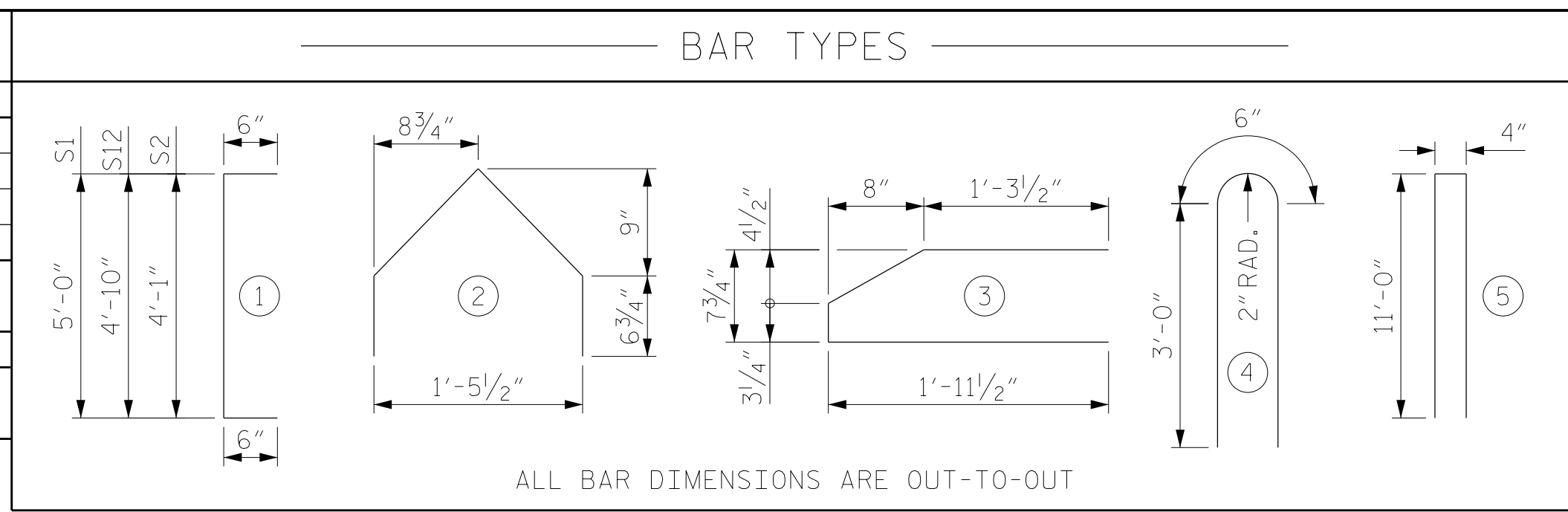


SPAN A GIRDER DIMENSIONS					
GIRDER	L	A	B	C	D
GIRDER A1	118'-4 <sup>5</sup> / <sub>8</sub> "	1'-4 <sup>5</sup> / <sub>16</sub> "	45	8 <sup>1</sup> / <sub>2</sub> "	106
GIRDER A2	113'-2 <sup>3</sup> / <sub>16</sub> "	1'-0 <sup>3</sup> / <sub>16</sub> "	42	7 <sup>1</sup> / <sub>2</sub> "	101
GIRDER A3	108'-0 <sup>9</sup> / <sub>16</sub> "	1'-5 <sup>1</sup> / <sub>4</sub> "	38	6 <sup>1</sup> / <sub>2</sub> "	96
GIRDER A4	102'-10 <sup>9</sup> / <sub>16</sub> "	1'-1 <sup>1</sup> / <sub>4</sub> "	35	11 <sup>1</sup> / <sub>2</sub> "	90

SPAN B GIRDER DIMENSIONS					
GIRDER	L	A	B	C	D
GIRDERS B1, B2, B3, & B4	112'-9 <sup>1</sup> / <sub>2</sub> "	9 <sup>3</sup> / <sub>4</sub> "	42	10 <sup>5</sup> / <sub>16</sub> "	100



SPAN A			SPAN B		
0.6" Ø L. R. GRADE 270 STRANDS			0.6" Ø L. R. GRADE 270 STRANDS		
AREA (SQ. IN.)	ULTIMATE STRENGTH (LBS/STRAND)	APPLIED PRESTRESS (LBS/STRAND)	AREA (SQ. IN.)	ULTIMATE STRENGTH (LBS/STRAND)	APPLIED PRESTRESS (LBS/STRAND)
0.217	58,600	43,950	0.217	58,600	43,950

REINF. STEEL FOR ONE GIRDER						REINF. STEEL FOR ONE GIRDER					
BAR	NUMBER	SIZE	TYPE	LENGTH	WEIGHT	BAR	NUMBER	SIZE	TYPE	LENGTH	WEIGHT

GIRDER 1	S2	127	#5	1	6'-0"	513	S1	82	#5	1	6'-0"	513
GIRDER 2	S2	124	#5	1	5'-1"	673	S2	124	#5	1	5'-1"	657
GIRDER 3	S2	120	#5	1	5'-1"	636	S4	248	#3	3	4'-4"	404
GIRDER 4	S2	117	#5	1	5'-1"	620	S5	34	#3	2	3'-3"	42
INTERIOR	S3	16	#4	STR	11'-6"	123	*S7	10	#5	STR	3'-8"	38
GIRDER 1	S4	254	#3	3	4'-4"	414	S8	124	#4	STR	3'-8"	306
GIRDER 2	S4	248	#3	3	4'-4"	404	S9	16	#4	STR	8'-0"	86
GIRDER 3	S4	240	#3	3	4'-4"	391	S10	8	#4	4	6'-6"	35
GIRDER 4	S4	234	#3	3	4'-4"	381	S11	8	#6	STR	24'-0"	288
	S5	34	#3	2	3'-3"	42	S12	42	#5	1	5'-10"	256
	S6	40	#5	STR	4'-0"	167	S13	8	#4	5	22'-4"	119
	*S7	10	#5	STR	3'-8"	38						

QUANTITIES FOR ONE GIRDER		
REINFORCING STEEL LB.	8,500 PSI CONCRETE C.Y.	0.6" Ø L. R. GRADE NO.
2909	27.1	60

GIRDERS REQUIRED		
NUMBER	LENGTH	TOTAL LENGTH
4	112'-9 <sup>1</sup> / <sub>2</sub> "	451'-2"

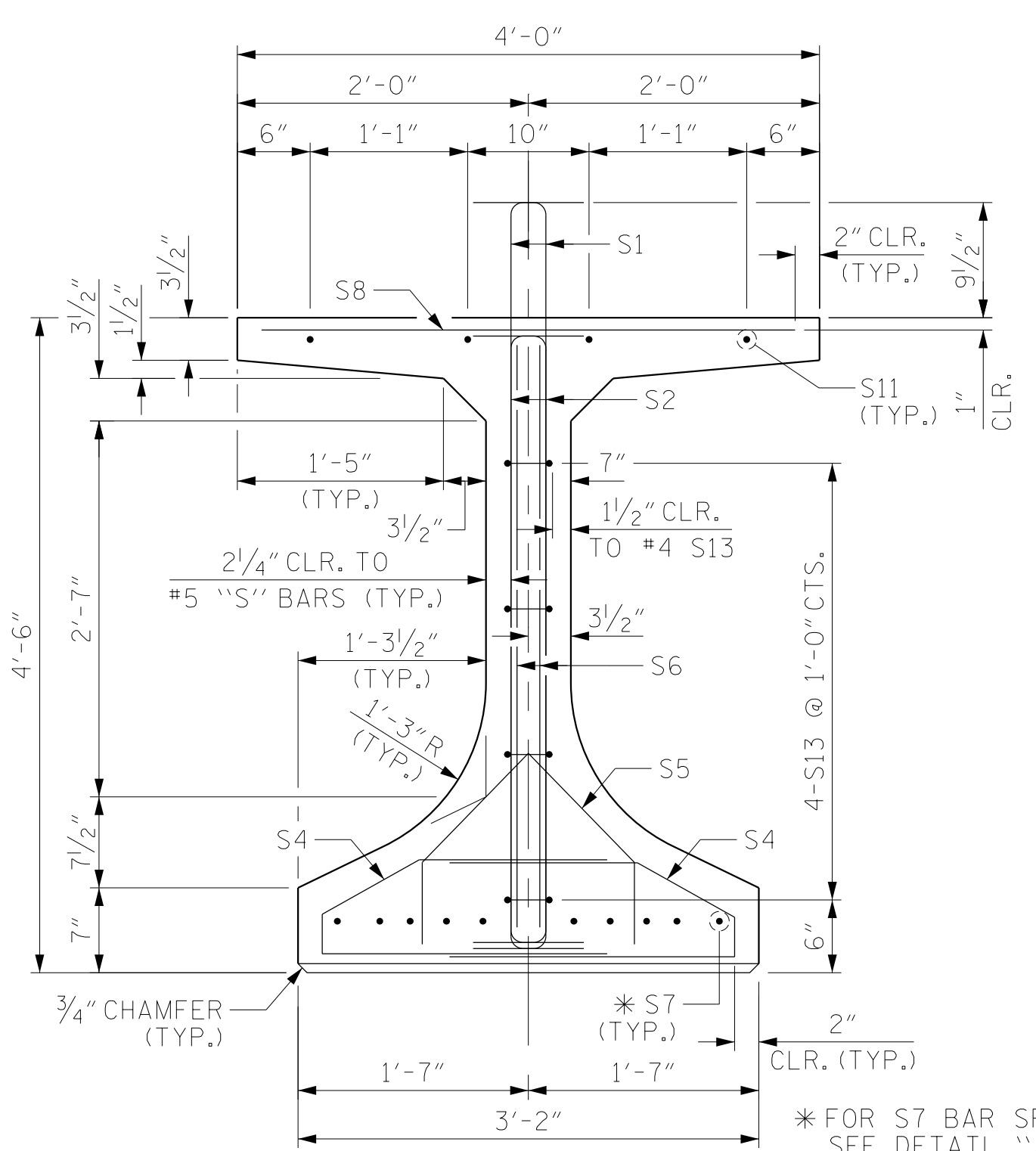
QUANTITIES FOR ONE GIRDER			
REINFORCING STEEL LB.	8,500 PSI CONCRETE C.Y.	0.6" Ø L. R. GRADE NO.	
GIRDER 1	2967	28.4	60
GIRDER 2	2982	27.2	60
GIRDER 3	2911	25.9	60
GIRDER 4	2781	24.7	60

GIRDERS REQUIRED		
NUMBER	LENGTH	TOTAL LENGTH
4	VARIES	442'-6 <sup>5</sup> / <sub>16</sub> "

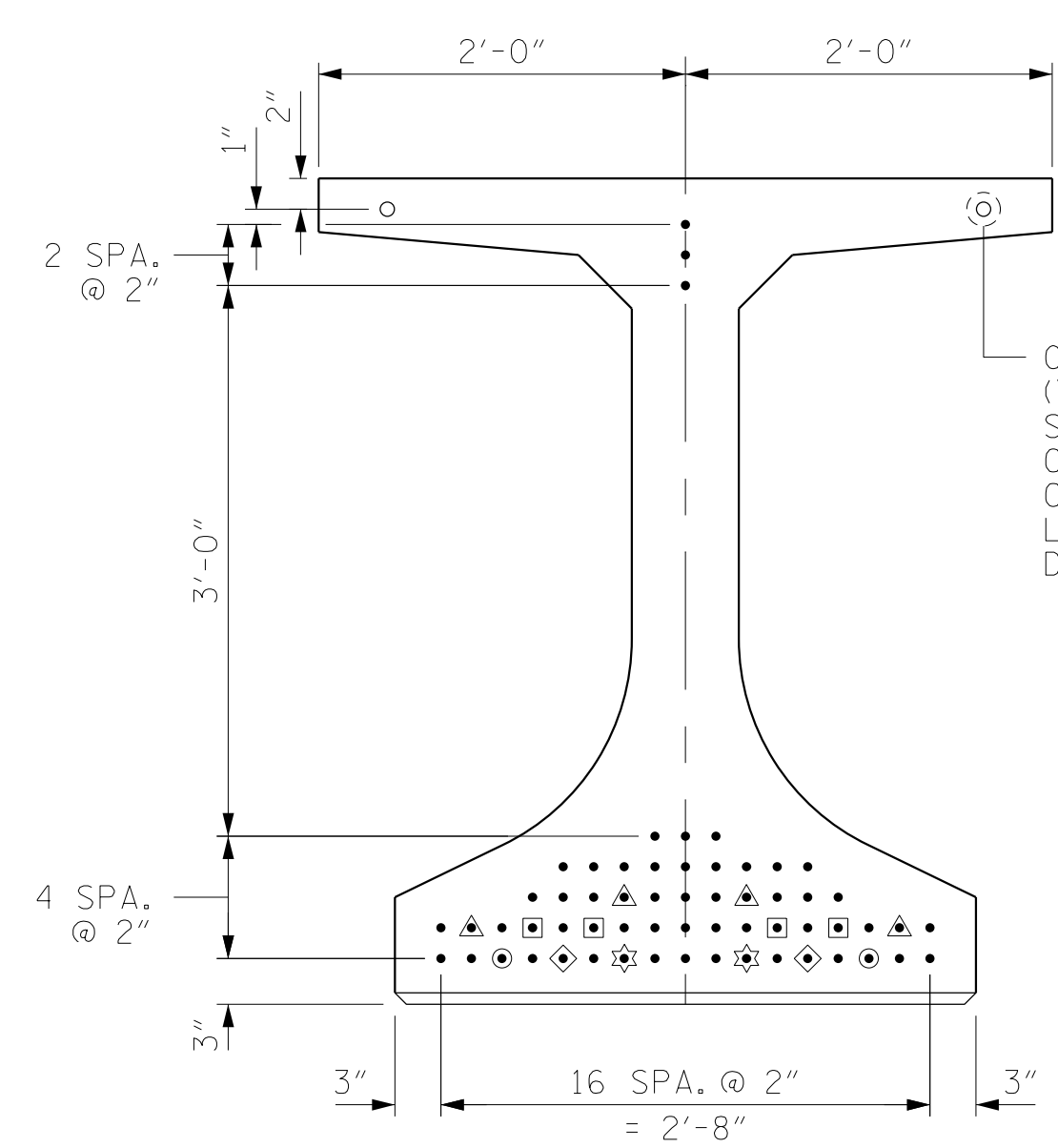
\* NOTE: S7 BARS SHALL BE BENT BEFORE SHIPMENT. HEAT BENDING SHALL NOT BE ALLOWED.

**DEBONDING LEGEND**

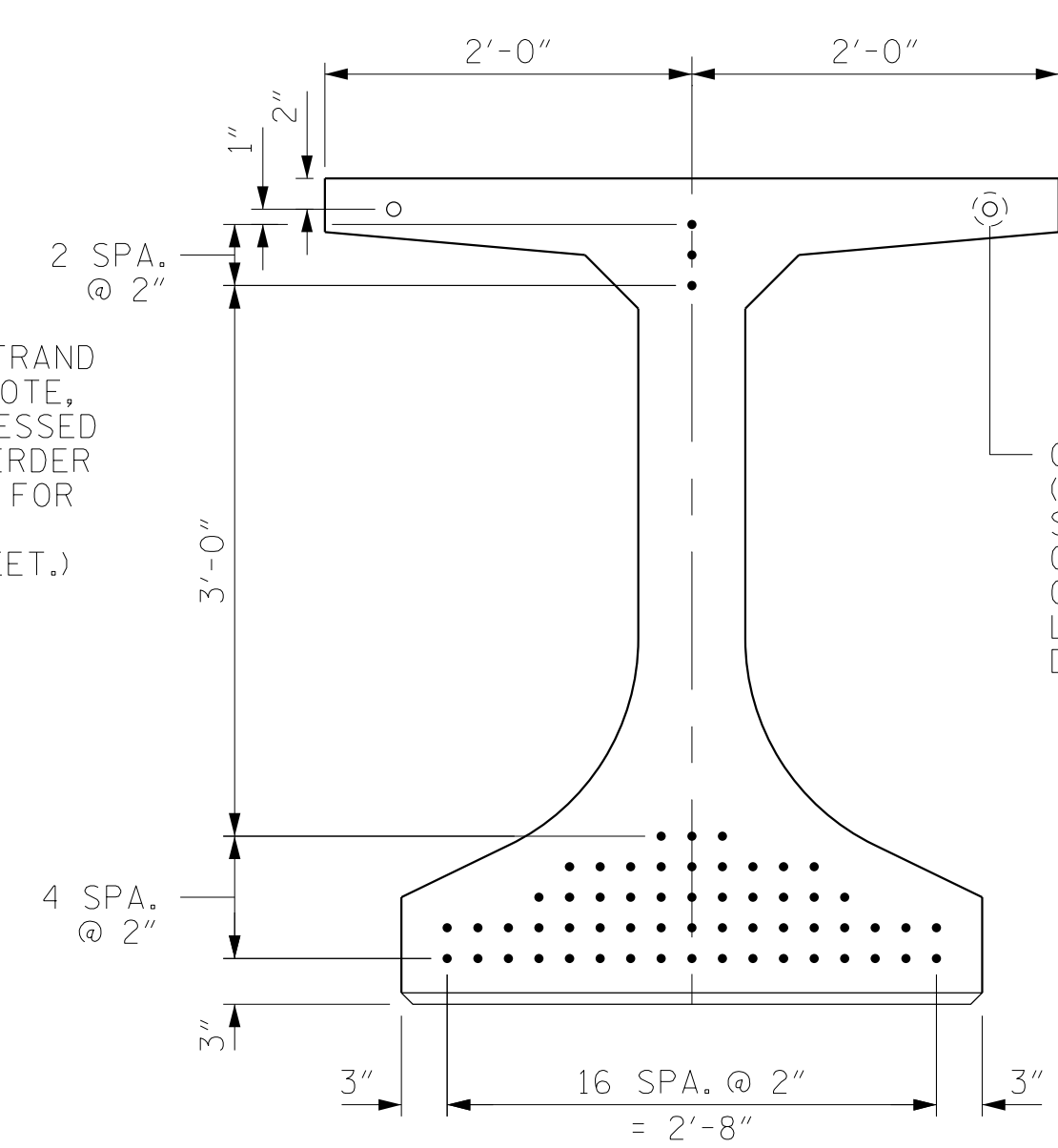
- FULLY BONDED STRANDS
- ◊ DEBONDED FOR 32'-0" FROM END OF GIRDER
- ◈ DEBONDED FOR 22'-0" FROM END OF GIRDER
- ◉ DEBONDED FOR 12'-0" FROM END OF GIRDER
- ◐ DEBONDED FOR 6'-0" FROM END OF GIRDER
- ◑ DEBONDED FOR 4'-0" FROM END OF GIRDER



SECTION A-A



AT END OF GIRDER



AT C OF GIRDER

**0.6" Ø LOW RELAXATION STRAND LAYOUT**

(60 STRANDS REQUIRED)

DRAWN BY :	MRA	DATE :	04/2020
CHECKED BY :	MKO	DATE :	04/2021
DESIGN ENGINEER OF RECORD:	RLB	DATE :	09/2021

DOCUMENT NOT CONSIDERED FINAL UNLESS ALL SIGNATURES COMPLETED

**RS&H**  
Architects-Engineers-Planners, Inc.  
8521 Six Forks Road, Suite 400  
919-926-4100 FAX 919-846-9080  
www.rsandh.com  
North Carolina License No. 50737-F0403-C&E

PROJECT NO. U-5798A  
CUMBERLAND COUNTY  
STATION: 76+80.00 -L-

SHEET 2 OF 3

REVISIONS						SHEET NO.
NO.	BY:	DATE:	NO.	BY:	DATE:	S2-12
1			3			TOTAL SHEETS
2			4			43