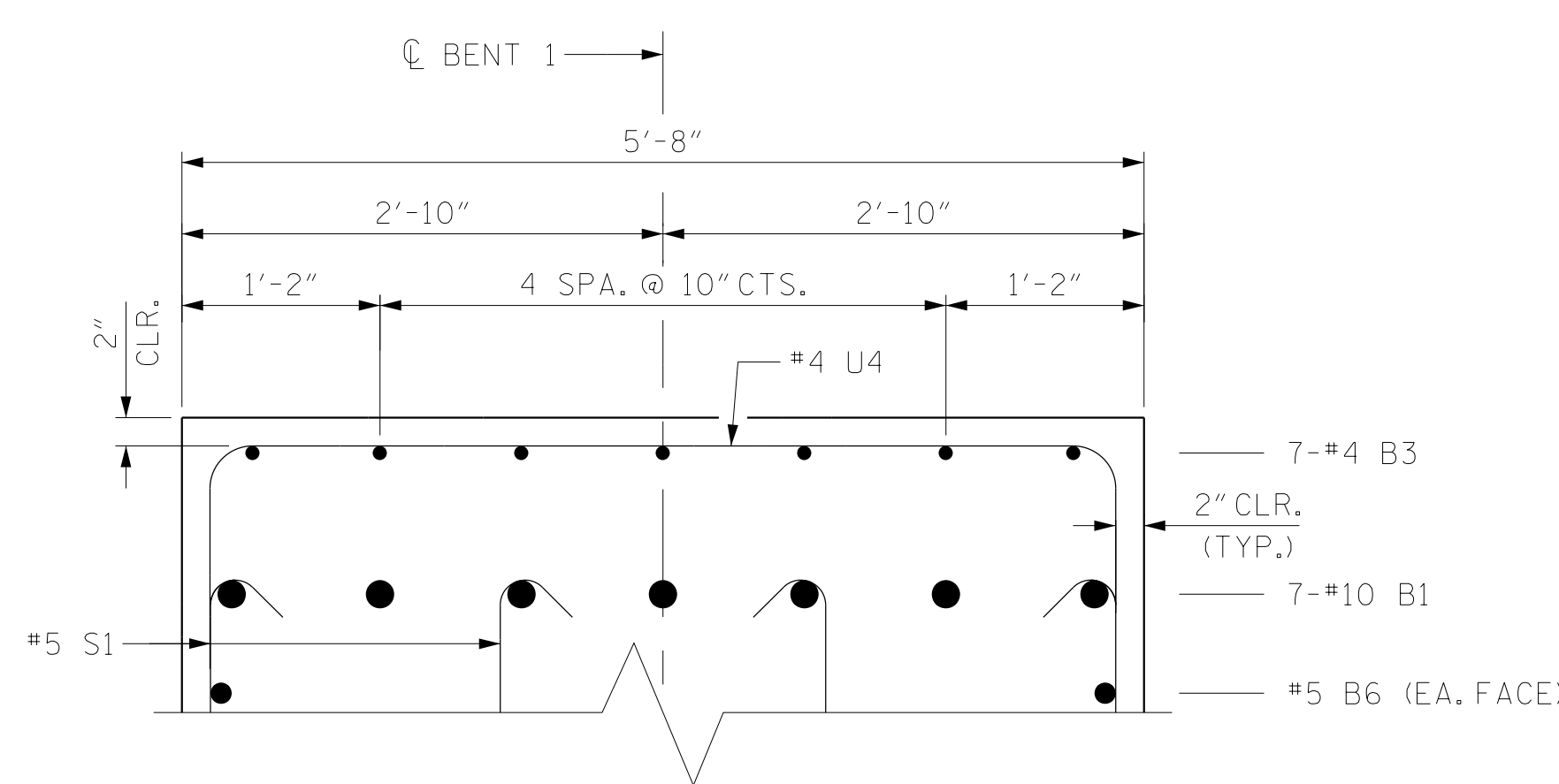
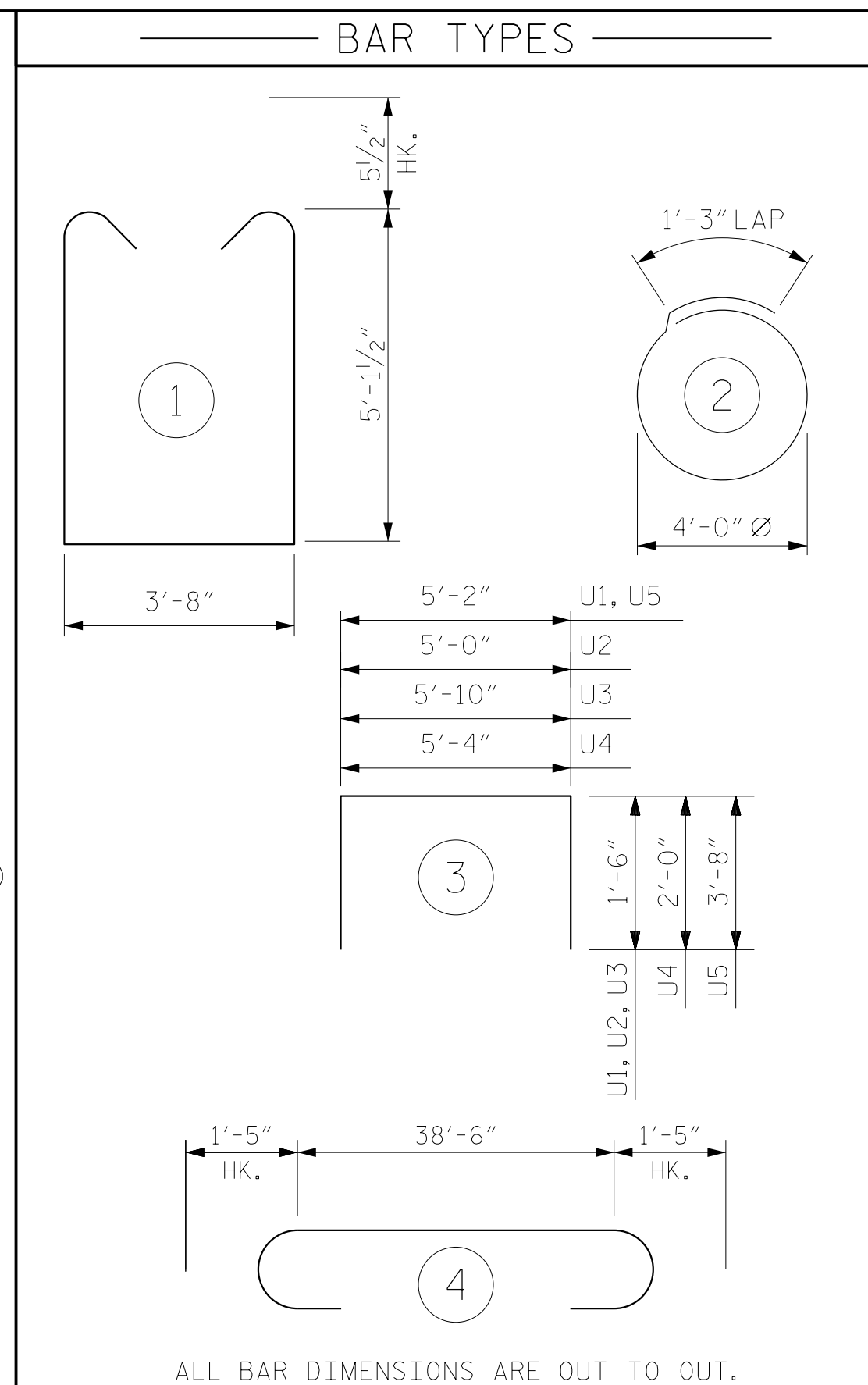


SECTION A-A

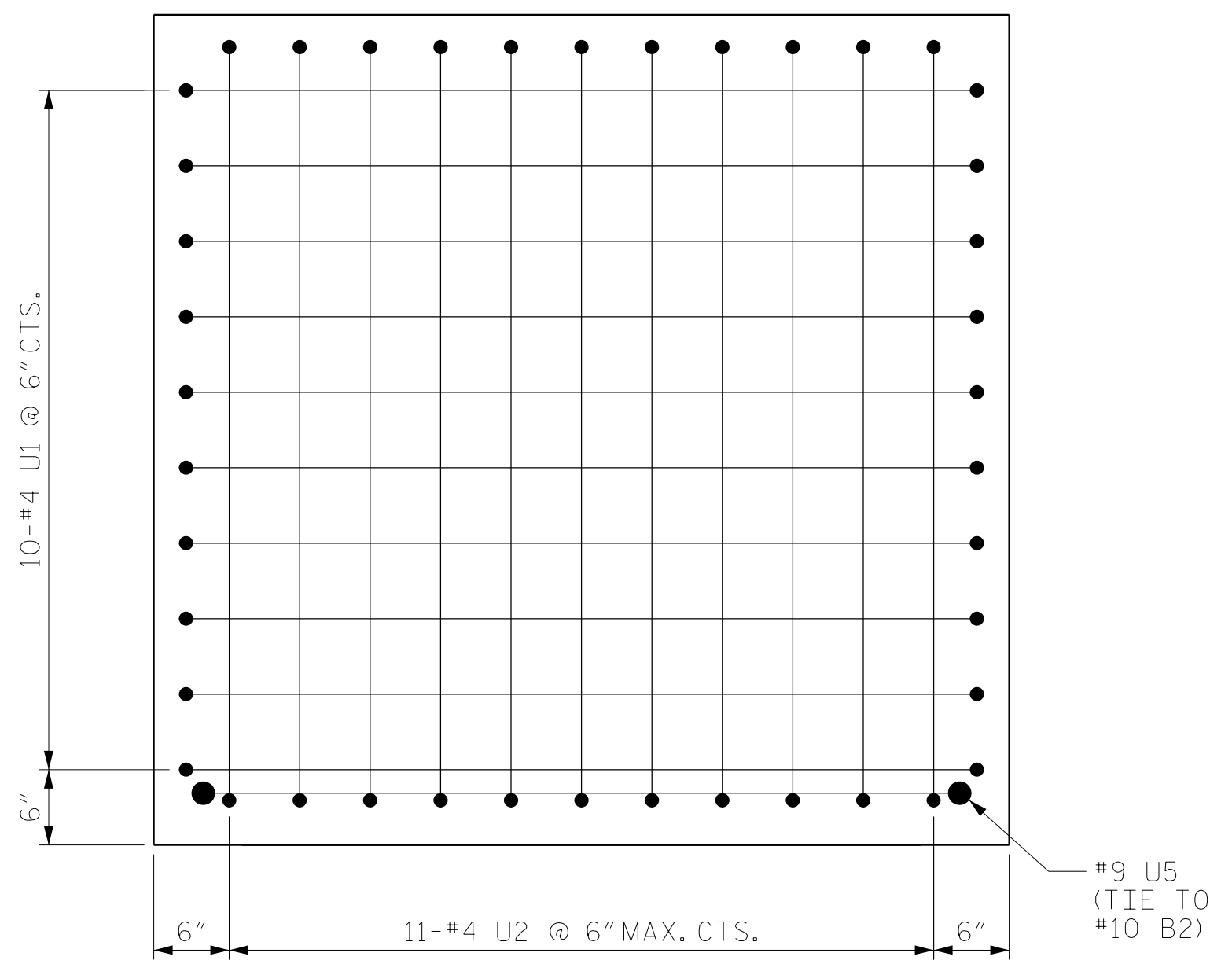


PARTIAL SECTION B-B

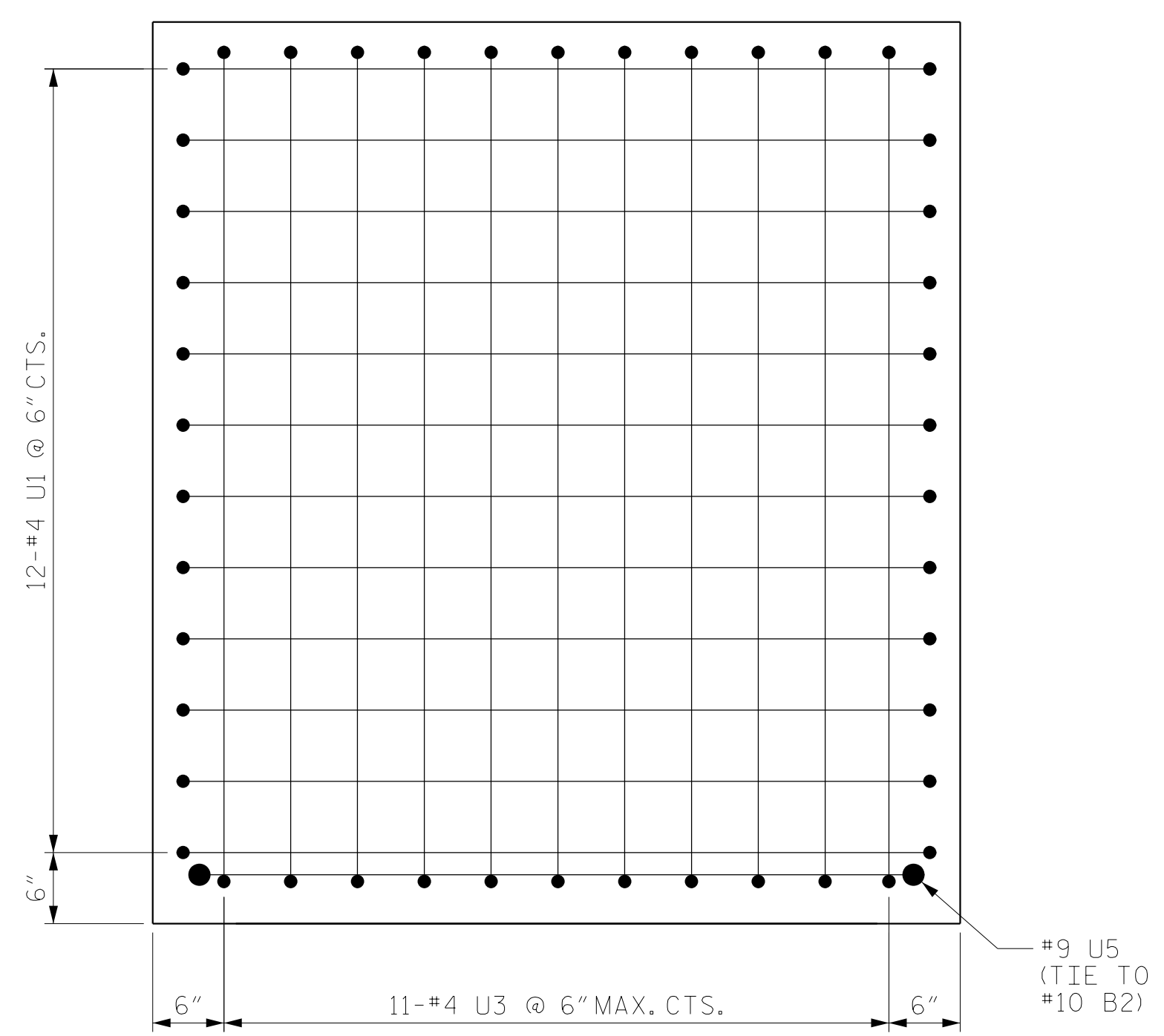


ALL BAR DIMENSIONS ARE OUT TO OUT.

BILL OF MATERIAL FOR BENT 1					
BAR	NO.	SIZE	TYPE	LENGTH	WEIGHT
B1	7	#10	4	41'-4"	1245
B2	6	#10	STR.	38'-8"	998
B3	14	#4	STR.	11'-1"	104
B4	7	#4	STR.	5'-2"	24
B5	12	#5	STR.	5'-0"	63
B6	10	#5	STR.	38'-8"	403
B7	11	#4	STR.	5'-4"	39
B8	5	#4	STR.	38'-8"	129
S1	80	#5	1	14'-10"	1238
S2	20	#4	2	13'-10"	185
U1	22	#4	3	8'-2"	120
U2	11	#4	3	8'-0"	59
U3	11	#4	3	8'-10"	65
U4	48	#4	3	9'-4"	299
U5	2	#9	3	12'-6"	85
REINFORCING STEEL					5,056 LBS.
▲ CLASS A CONCRETE					45.3 C.Y.
PP 36 X 0.50 GALVANIZED STEEL PILES					
BENT NO. 1 NO. 5					650.0 LIN. FT.
PILE DRIVING EQUIPMENT SETUP FOR PP 36 X 0.50 GALVANIZED STEEL PILES					NO. 5
PILE REDRIVES					NO. 3
▲ CONCRETE DISPLACED BY THE PP 36 X 0.50 GALVANIZED STEEL PIPE PILES HAS BEEN DEDUCTED FROM THE CONCRETE QUANTITY.					



VIEW C-C



VIEW D-D

DRAWN BY : TWL DATE : 01/2021
 CHECKED BY : MRA DATE : 04/2021
 DESIGN ENGINEER OF RECORD: RLB DATE : 09/2021

DOCUMENT NOT CONSIDERED FINAL UNLESS ALL SIGNATURES COMPLETED



PROJECT NO. U-5798A
 CUMBERLAND COUNTY
 STATION: 76+80.00 -L-

SHEET 2 OF 3

STATE OF NORTH CAROLINA DEPARTMENT OF TRANSPORTATION RALEIGH					
SUBSTRUCTURE					
BENT 1 DETAILS					
LEFT LANE					
REVISIONS					
NO.	BY:	DATE:	NO.	BY:	DATE:
1			3		
2			4		
SHEET NO.					S1-35
TOTAL SHEETS					43