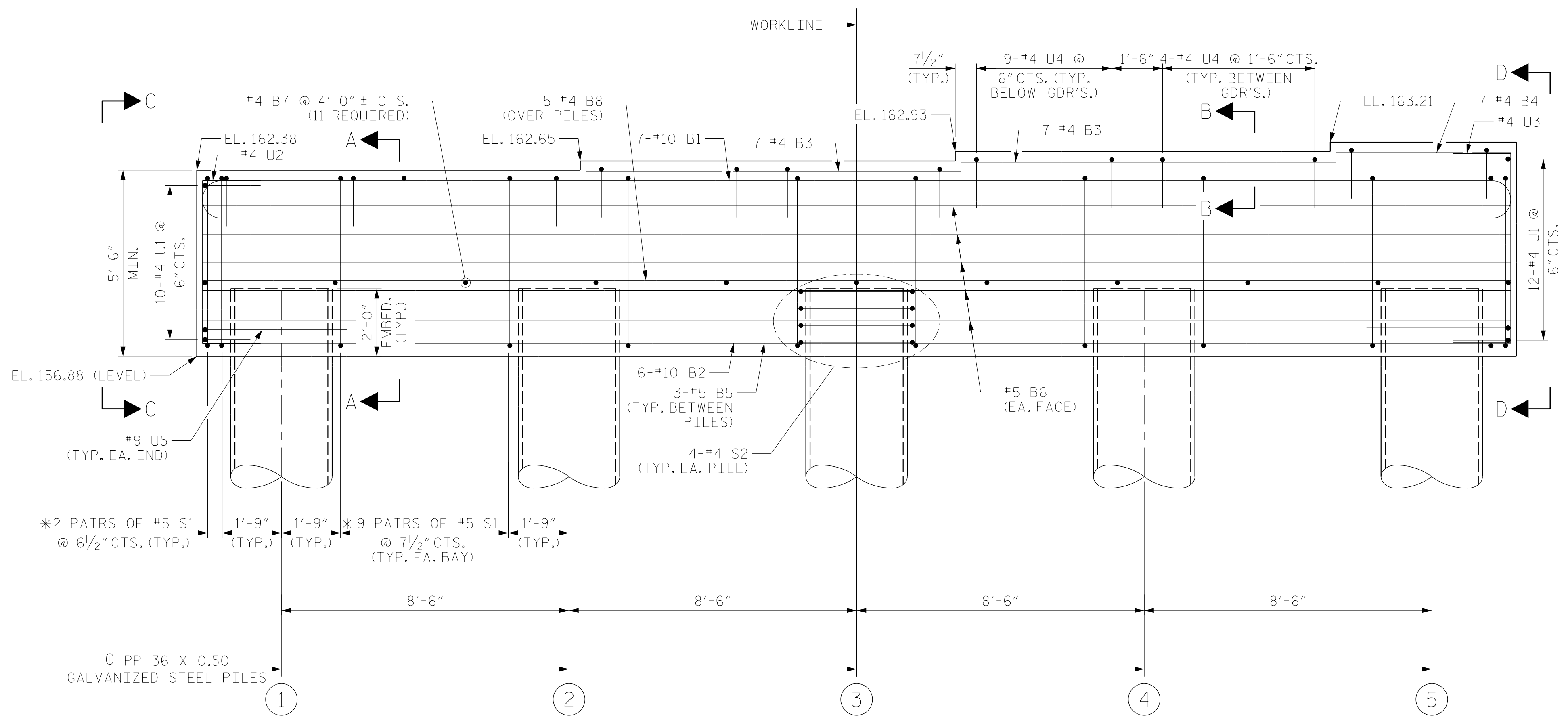


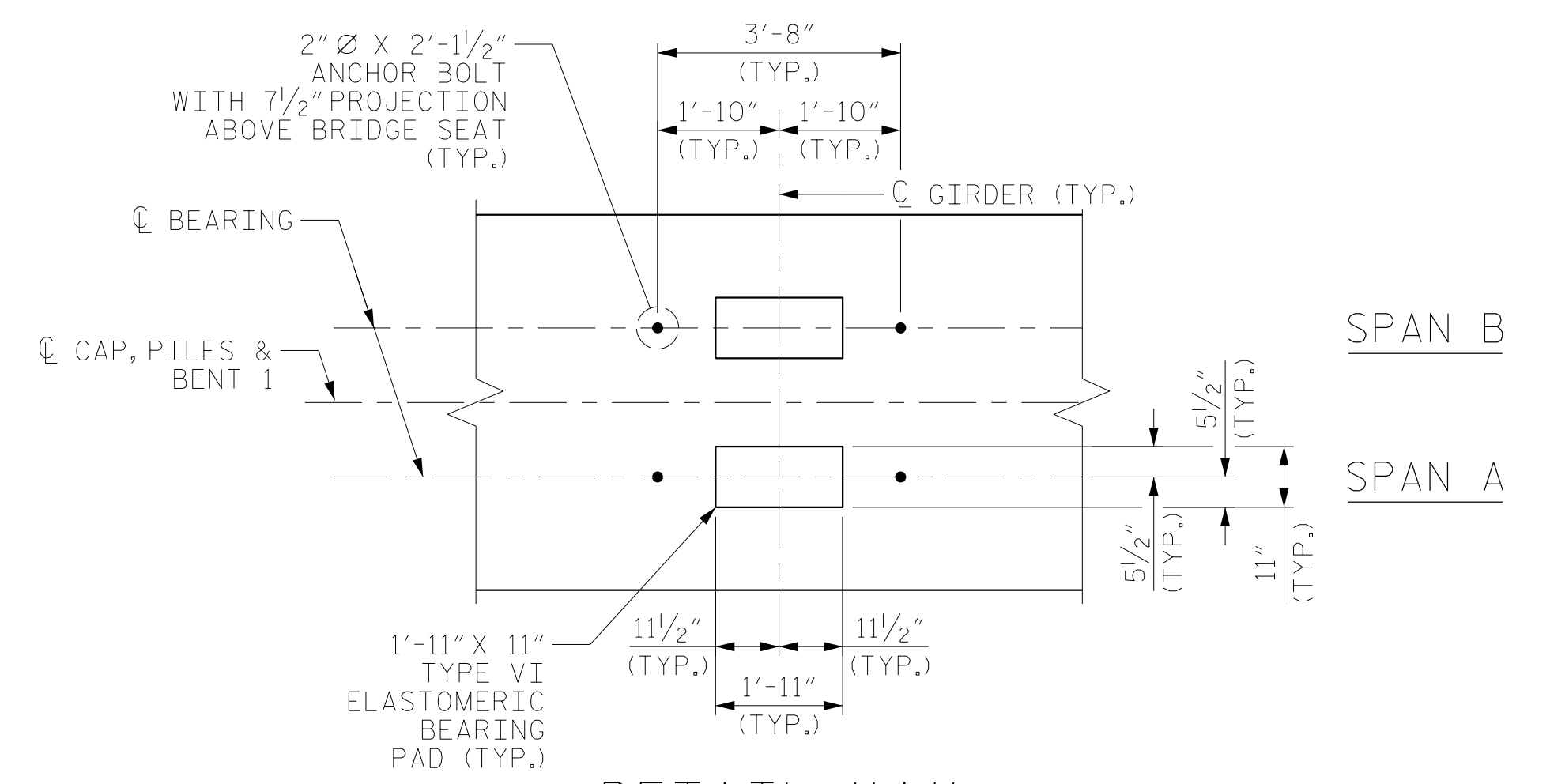
PLAN



ELEVATION

NOTES:

- FOR SECTION A-A, PARTIAL SECTION B-B, VIEW C-C AND VIEW D-D SEE SHEET 2 OF 3.
- FOR REINFORCING STEEL BILL OF MATERIAL, SEE SHEET 2 OF 3.
- FOR ADDITIONAL REINFORCING STEEL AND CONCRETE IN PP 36 X 0.50 GALVANIZED STEEL PILES, SEE SHEET 3 OF 3.
- HOOKS ON V1 BARS IN CONCRETE PLUGS MAY BE TURNED AS NECESSARY TO AVOID EMBEDDED ANCHOR BOLTS.
- S1 AND U4 BARS MAY BE SHIFTED AS NECESSARY TO CLEAR ANCHOR BOLTS.
- U1, U2 AND U3 BARS MAY BE ROTATED AS NECESSARY SO THAT LEGS OF BARS CLEAR PIPE PILES.
- \*INVERT ALTERNATE #5 S1 STIRRUPS.
- GALVANIZE THE TOP OF EACH INTERIOR BENT PILE A MINIMUM OF 30 FEET. GALVANIZE IN ACCORDANCE WITH SECTION 1076 OF THE STANDARD SPECIFICATIONS.



DETAIL "A"

DIMENSIONS TYPICAL FOR EACH BEARING. PILES AND STEP NOT SHOWN FOR CLARITY.

PROJECT NO. U-5798A  
CUMBERLAND COUNTY  
 STATION: 76+80.00 -L-

SHEET 1 OF 3



STATE OF NORTH CAROLINA DEPARTMENT OF TRANSPORTATION RALEIGH						SHEET NO. S1-34	
SUBSTRUCTURE						TOTAL SHEETS 43	
BENT 1							
LEFT LANE							
REVISIONS							
NO.	BY:	DATE:	NO.	BY:	DATE:		
1			3				
2			4				

DRAWN BY : TWL DATE : 01/2021  
 CHECKED BY : MRA DATE : 04/2021  
 DESIGN ENGINEER OF RECORD: RLB DATE : 09/2021

DOCUMENT NOT CONSIDERED FINAL UNLESS ALL SIGNATURES COMPLETED