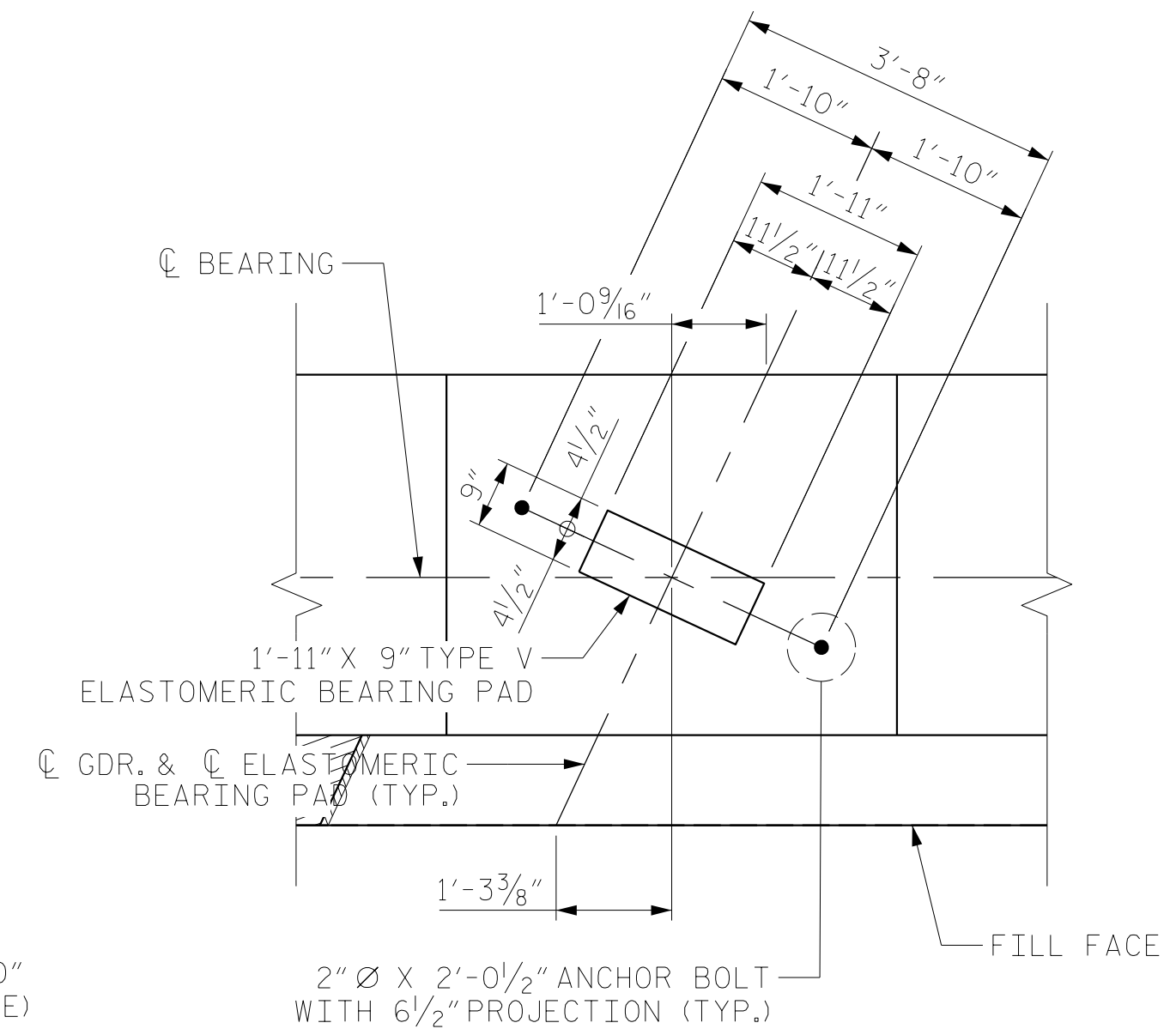


PARTIAL PLAN

NOTES:
 FOR SECTION A-A, PARTIAL SECTION B-B, AND PARTIAL SECTION C-C, SEE SHEET 3 OF 3.
 STIRRUPS AND U3 BARS IN CAP MAY BE SHIFTED, AS NECESSARY, TO CLEAR ANCHOR BOLTS.
 BACKWALL SHALL BE PLACED BEFORE APPLYING THE EPOXY PROTECTIVE COATING.
 THE TOP SURFACE OF THE END BENT CAP SHALL BE CURED IN ACCORDANCE WITH THE STANDARD SPECIFICATION, EXCEPT THE MEMBRANE CURING COMPOUND METHOD SHALL NOT BE USED.
 THE TOP SURFACE AREA OF THE END BENT CAP EXCEPT THE BRIDGE SEAT BUILDUPS SHALL BE SLOPED TRANSVERSELY FROM THE FILL FACE TO THE FRONT FACE AT THE RATE OF 2%.
 THE CONCRETE IN THE SHADED AREA OF THE WING SHALL BE POURED AFTER THE PARAPET IS CAST IF SLIP FORMING IS USED.

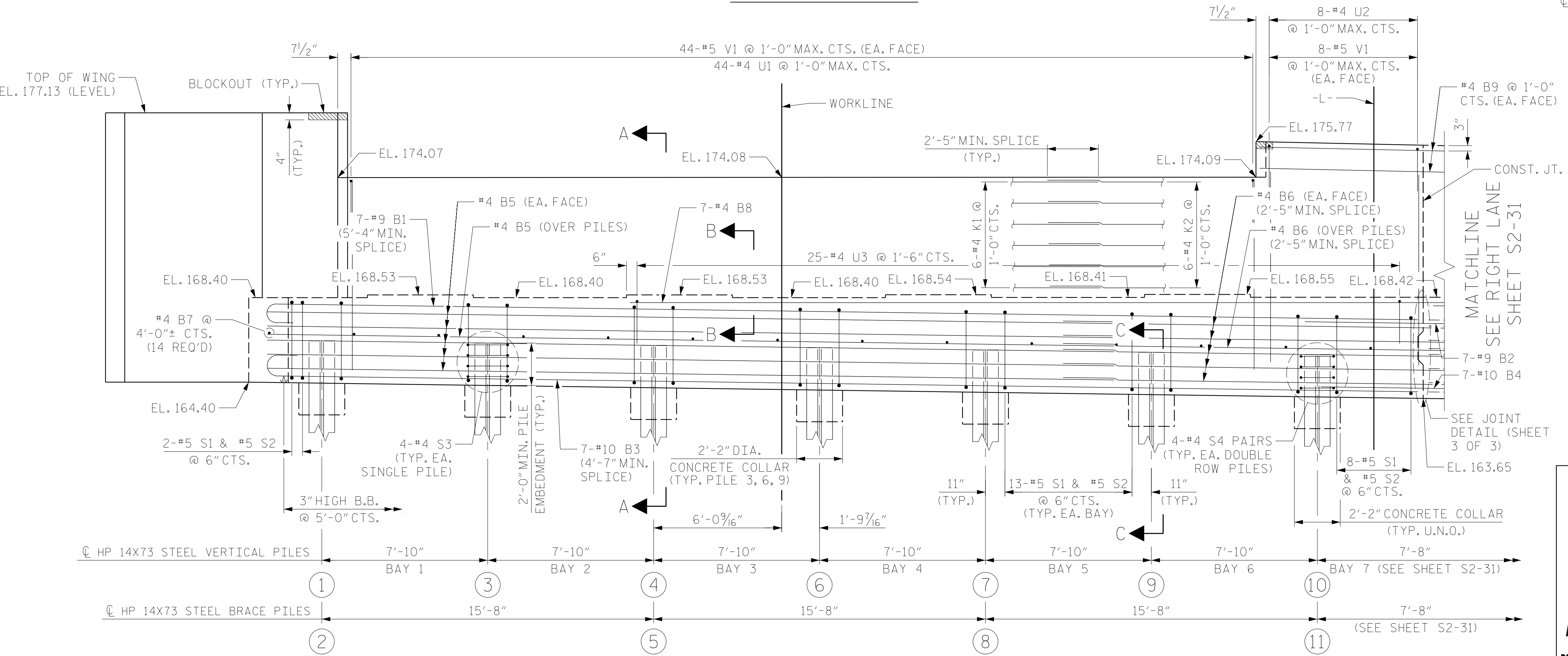


DETAIL "A"
 PILE NOT SHOWN FOR CLARITY

TOP OF PILE ELEVATIONS						
PILE 1	PILE 3	PILE 4	PILE 6	PILE 7	PILE 9	PILE 10
166.36	166.25	166.14	166.03	165.93	165.82	165.71
PILE 2	PILE 5	PILE 8	PILE 11			
166.36	166.14	165.93	165.71			

PROJECT NO. U-5798A
 CUMBERLAND COUNTY
 STATION: 76+80.00 -L-

SHEET 1 OF 3



PARTIAL ELEVATION
 BRACE PILE IN WING NOT SHOWN FOR CLARITY

DRAWN BY : NSC DATE : 03/2020
 CHECKED BY : MKO DATE : 04/2021
 DESIGN ENGINEER OF RECORD: RLB DATE : 09/2021

DOCUMENT NOT CONSIDERED
 FINAL UNLESS ALL
 SIGNATURES COMPLETED



REVISIONS						SHEET NO.
NO.	BY:	DATE:	NO.	BY:	DATE:	S1-31
1			3			TOTAL SHEETS 43
2			4			