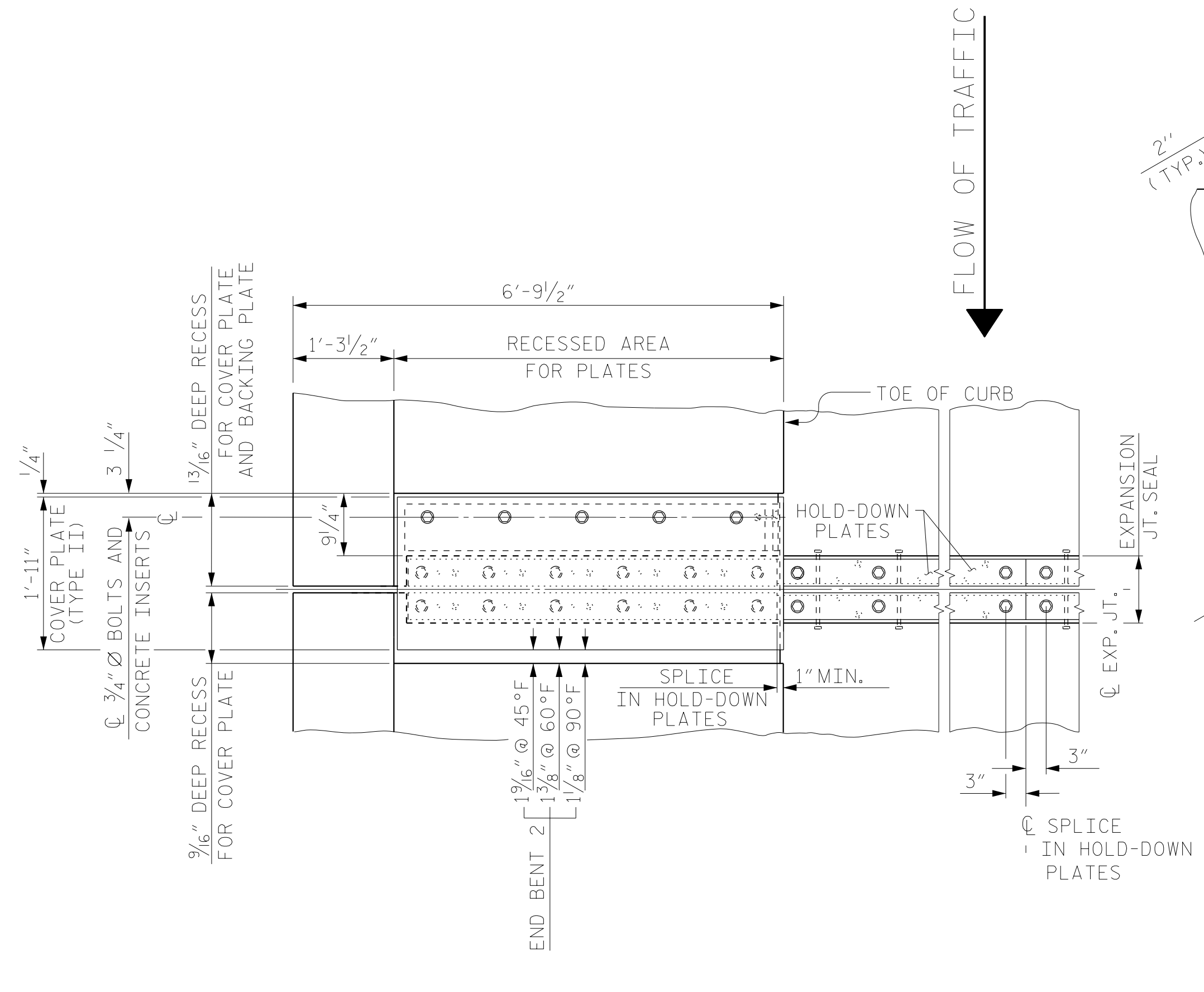
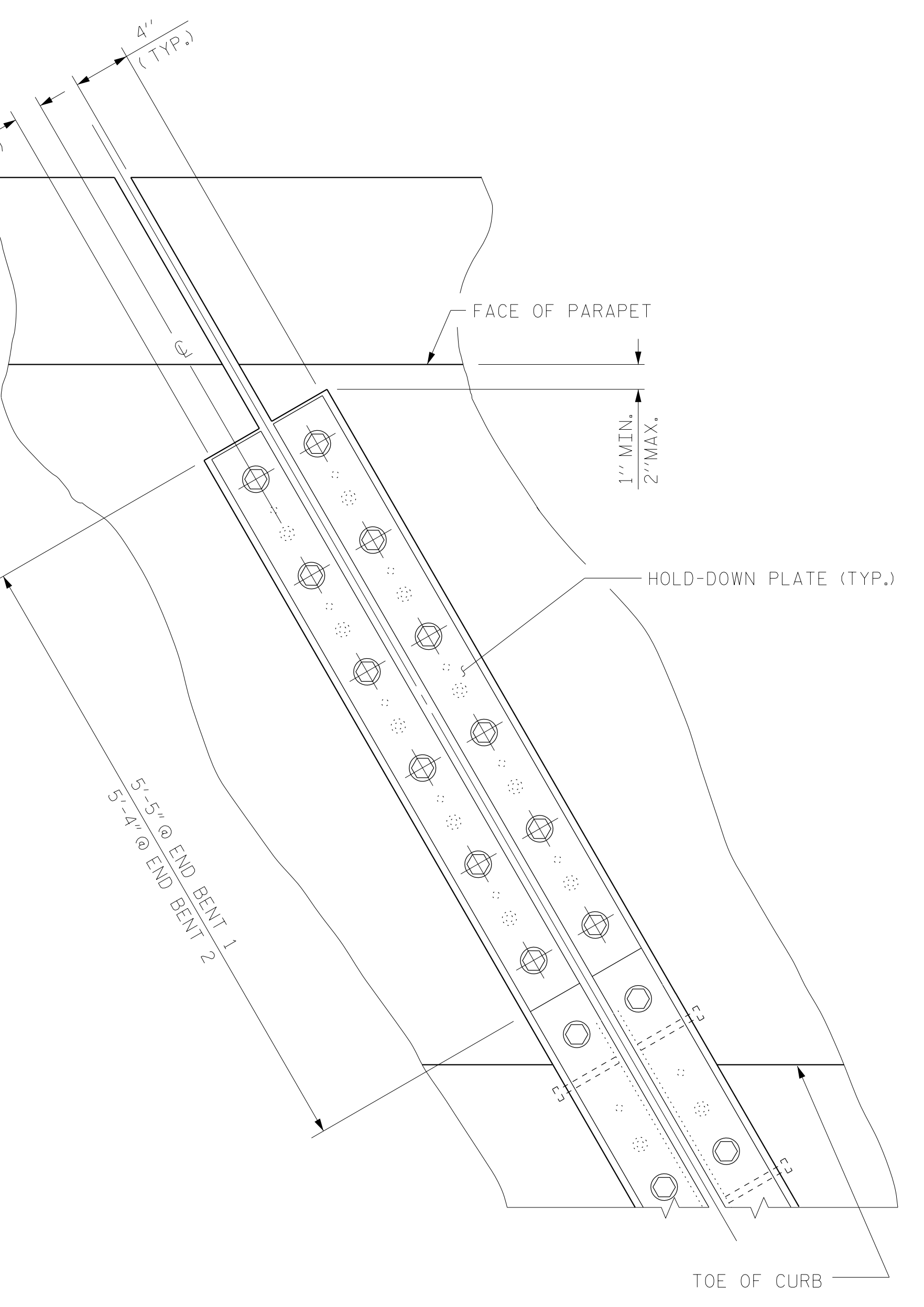


PLAN OF EXPANSION JOINT SEAL - END BENT 1

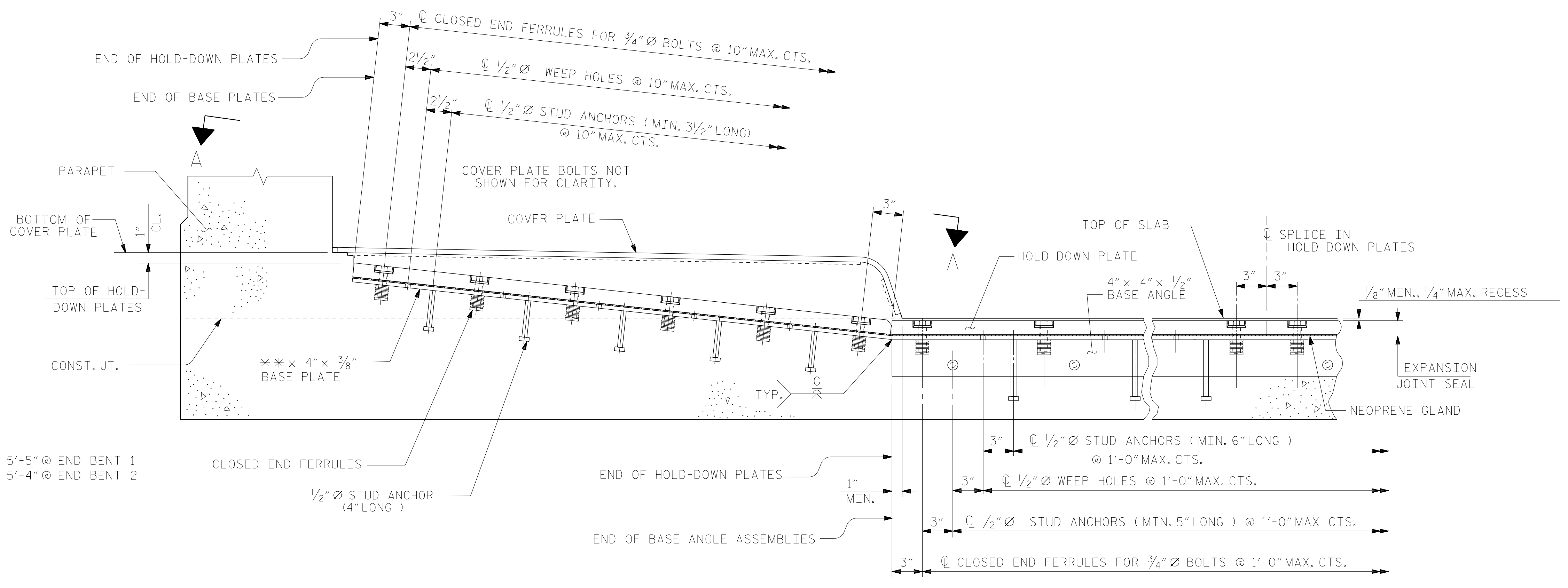


PLAN OF EXPANSION JOINT SEAL - END BENT 2



SECTION A - A

END BENT 1 SHOWN
END BENT 2 NORMAL TO ALIGNMENT



SECTION THRU SIDEWALK NORMAL TO JOINT

PROJECT NO. U-5798A
CUMBERLAND COUNTY
STATION: 76+80.00 -L-

SHEET 3 OF 4

ASSEMBLED BY : NSC	DATE : 02/2020
CHECKED BY : MRA	DATE : 04/2020
DRAWN BY : REK 10/87	REV. 5/1/06 TLA/GM
CHECKED BY : CRK 1/88	REV. 10/1/11 MAA/GM
	REV. 12/17 MAA/THG

11/24/2021
N:\rsandh.com\files\Transportation\1031782004.U-5798 (Gillis Hill Road).P&D\Design\Structures\CAD\Left Lane Bridge\401.055.U5798A.SMU.JS.S-28.250075.dgn
CuanyN

DOCUMENT NOT CONSIDERED
FINAL UNLESS ALL
SIGNATURES COMPLETED

RS&H
RS&H Architects-Engineers-Planners, Inc.
8521 Six Forks Road, Suite 400
919-926-4100 FAX 919-846-9080
www.rsandh.com
North Carolina License No. 50737-F-0403-C-08

STATE OF NORTH CAROLINA DEPARTMENT OF TRANSPORTATION RALEIGH						SHEET NO.
STANDARD EXPANSION JOINT SEAL DETAILS FOR SIDEWALK LEFT LANE						S1-28
REVISIONS						TOTAL SHEETS
NO.	BY:	DATE:	NO.	BY:	DATE:	43
1			3			
2			4			

STD. NO. EJS3 STR. #1