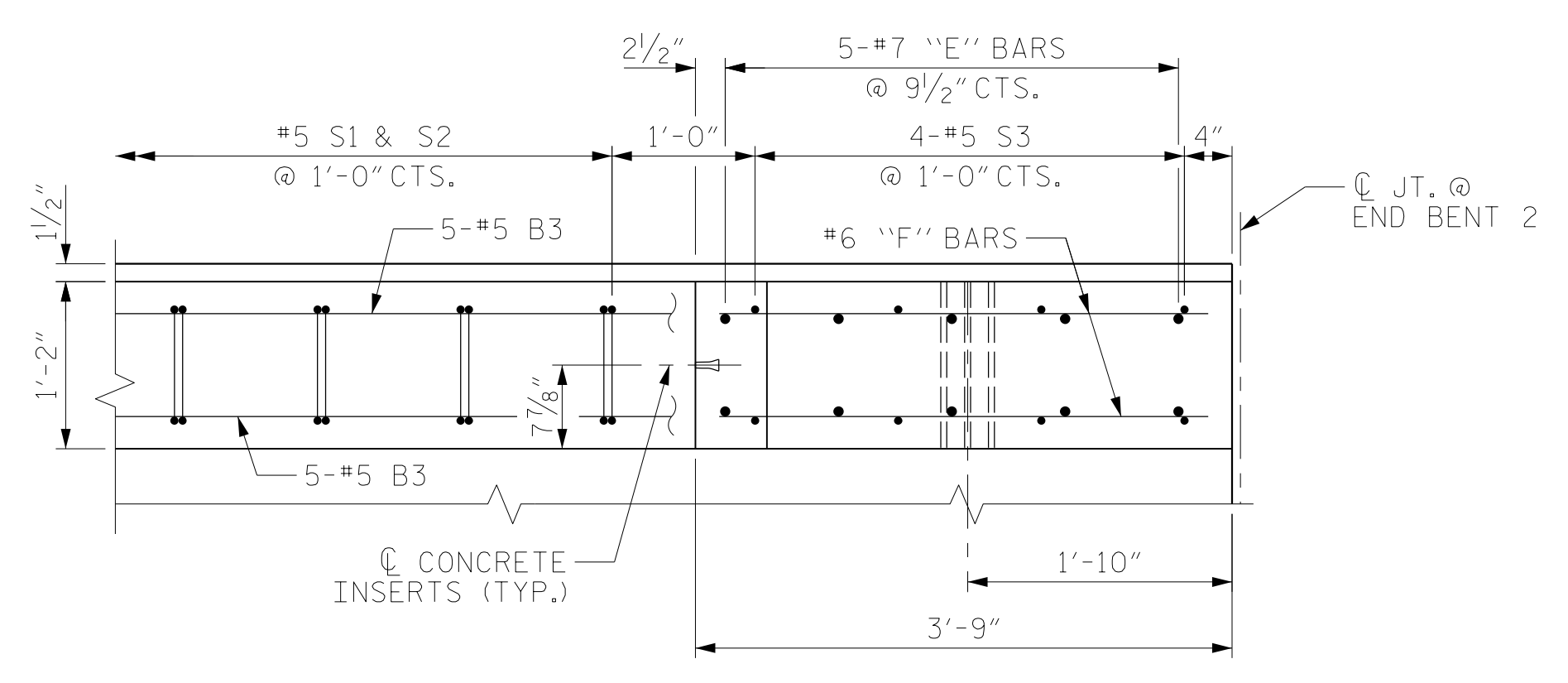
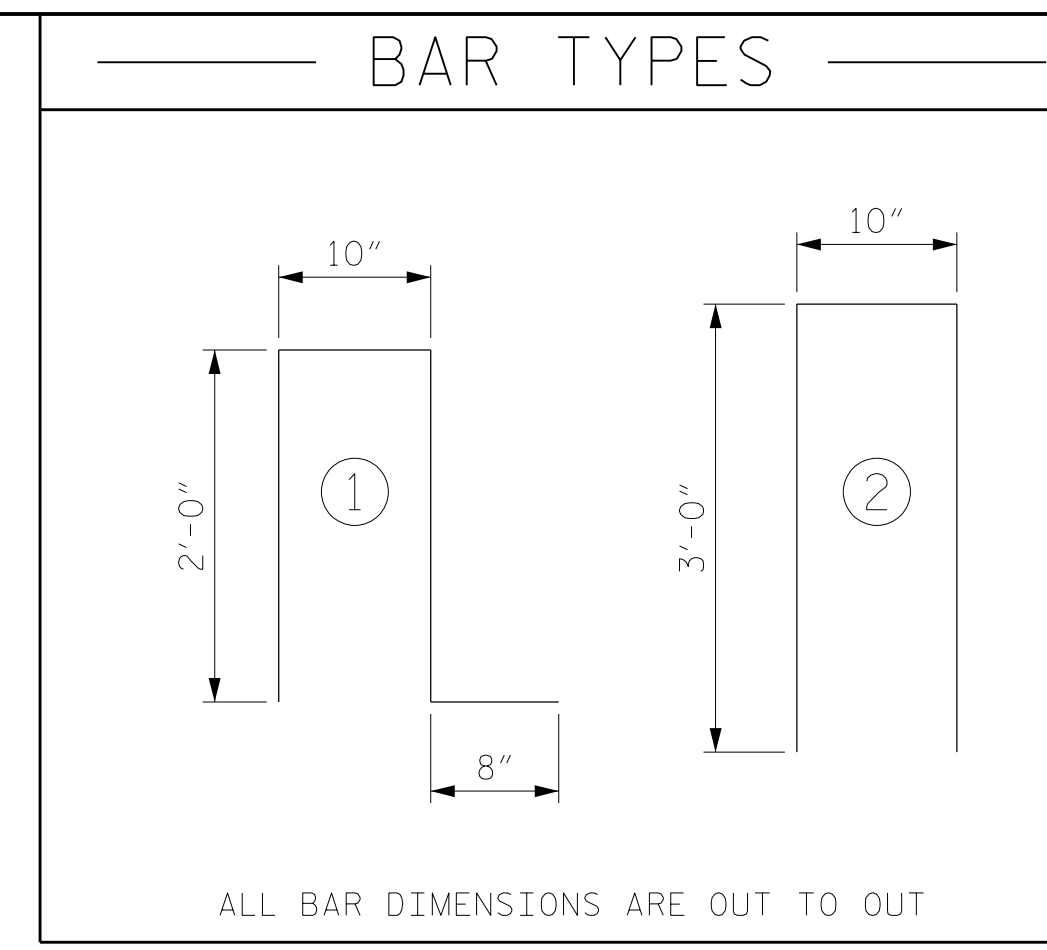


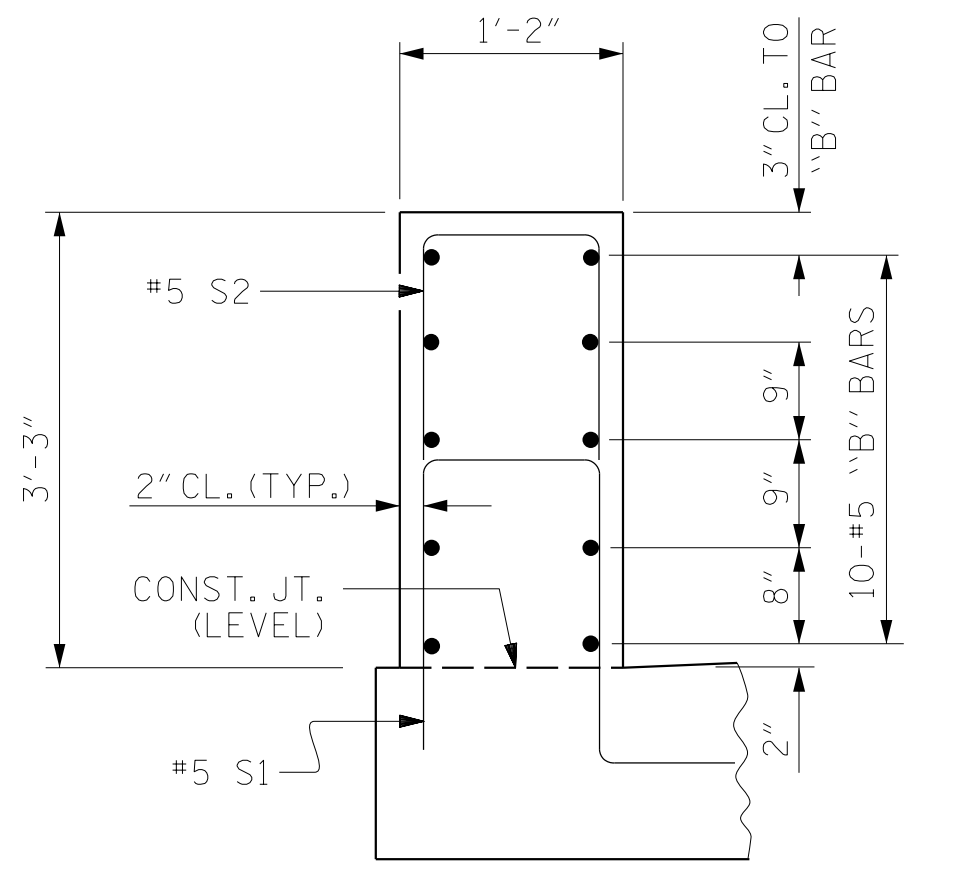
PLAN VIEW @ END BENT 1



PLAN VIEW @ END BENT 2

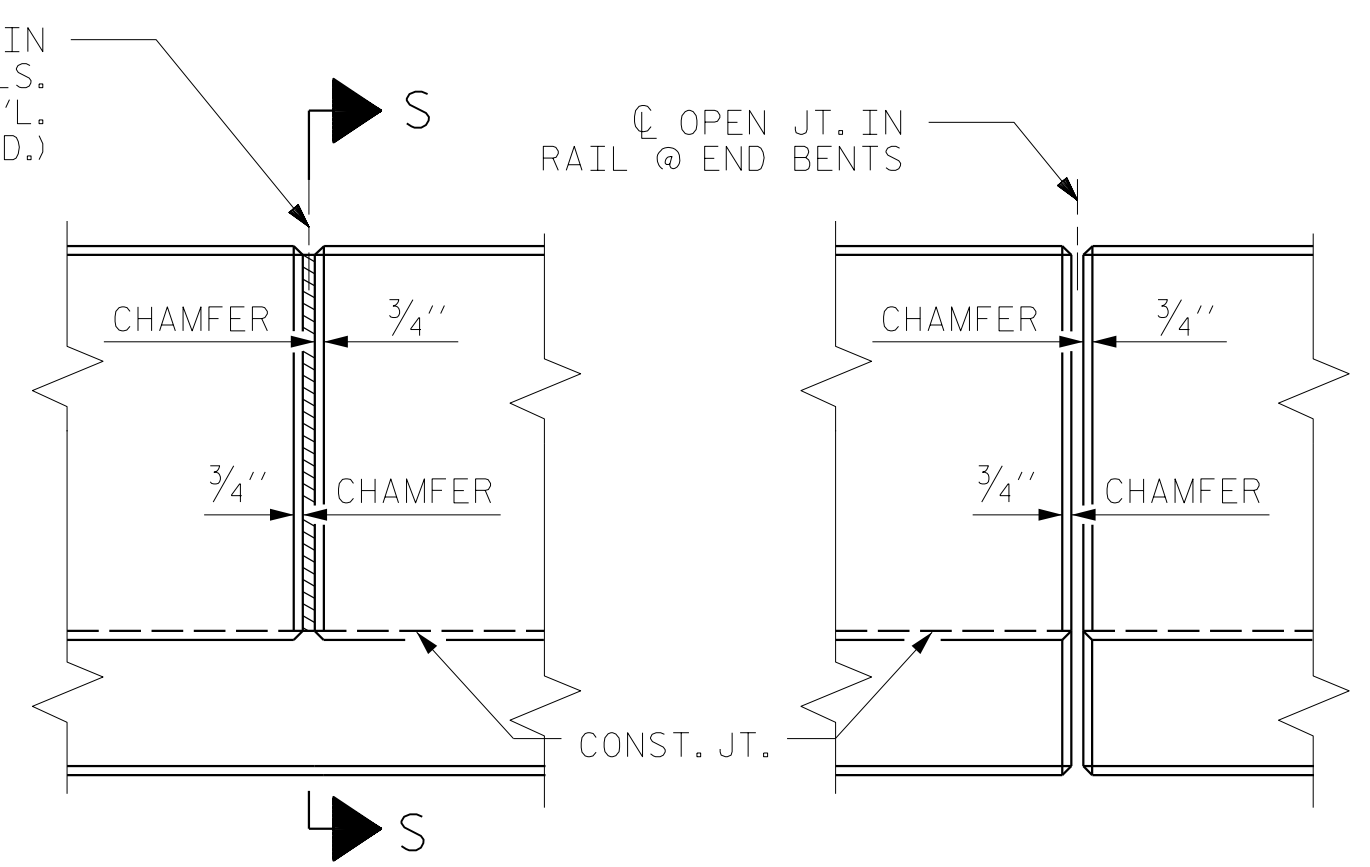


BILL OF MATERIAL FOR CONCRETE PARAPET						
BAR	NO.	SIZE	TYPE	LENGTH	WEIGHT	
*B1	85	#5	STR.	26'-7"	2357	
*B2	5	#5	STR.	26'-3"	137	
*B3	10	#5	STR.	15'-6"	162	
*E1	4	#7	STR.	3'-6"	29	
*E2	4	#7	STR.	3'-11"	32	
*E3	4	#7	STR.	4'-4"	35	
*E4	4	#7	STR.	4'-9"	39	
*E5	4	#7	STR.	5'-1"	42	
*F1	2	#6	STR.	2'-1"	6	
*F2	2	#6	STR.	1'-10"	6	
*F3	2	#6	STR.	3'-6"	11	
*F4	1	#6	STR.	3'-5"	5	
*F5	2	#6	STR.	3'-0"	9	
*F6	1	#6	STR.	3'-8"	6	
*F7	2	#6	STR.	3'-3"	10	
*S1	259	#5	1	5'-6"	1486	
*S2	251	#5	2	6'-10"	1789	
*S3	16	#5	STR.	3'-10"	64	
*EPOXY COATED REINFORCING STEEL					6,225 LBS.	
CLASS AA CONCRETE					37.1 C.Y.	
CONCRETE PARAPET					259.0 L.F.	

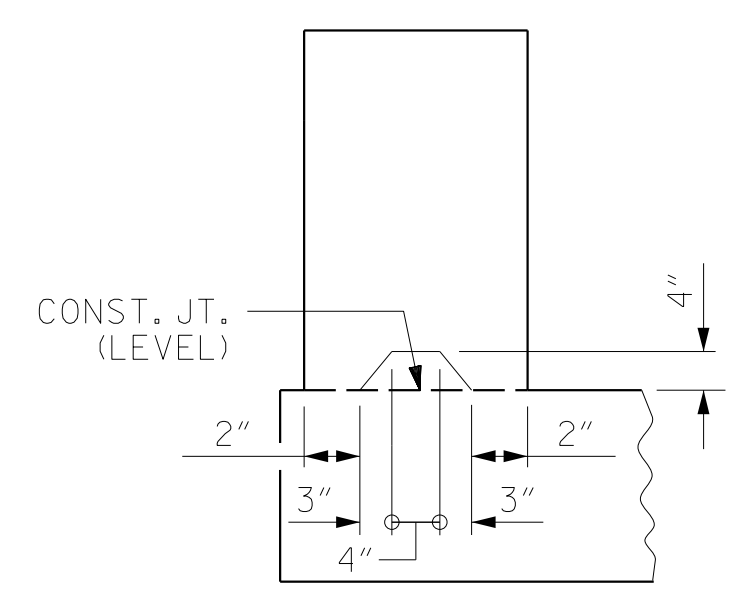


SECTION THROUGH LEFT PARAPET

1/2" EXP. JT. MAT'L. HELD IN PLACE WITH GALVANIZED NAILS. (NOTE: OMIT EXP. JT. MAT'L. WHEN SLIP FORM IS USED.)



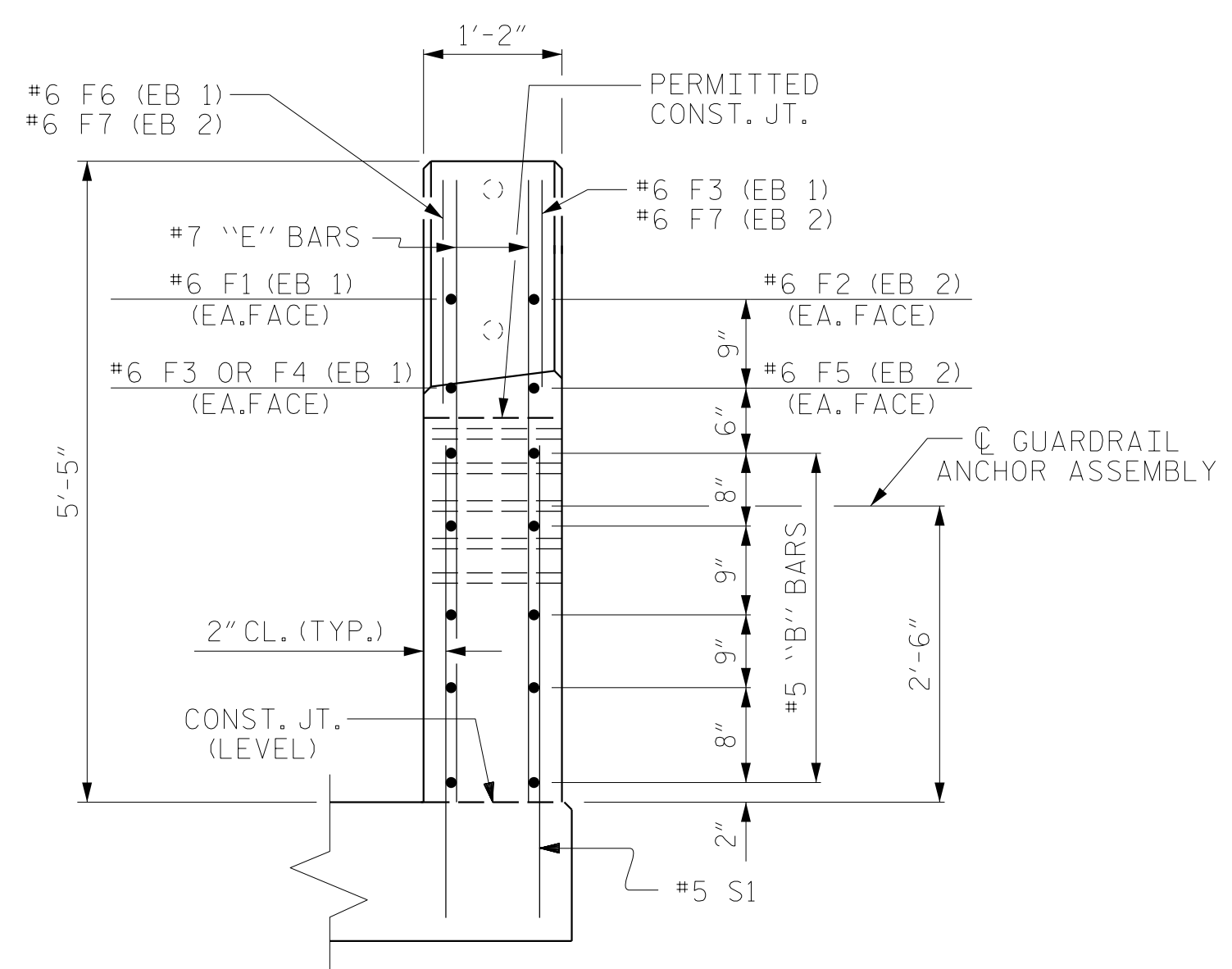
ELEVATION AT EXPANSION JOINTS



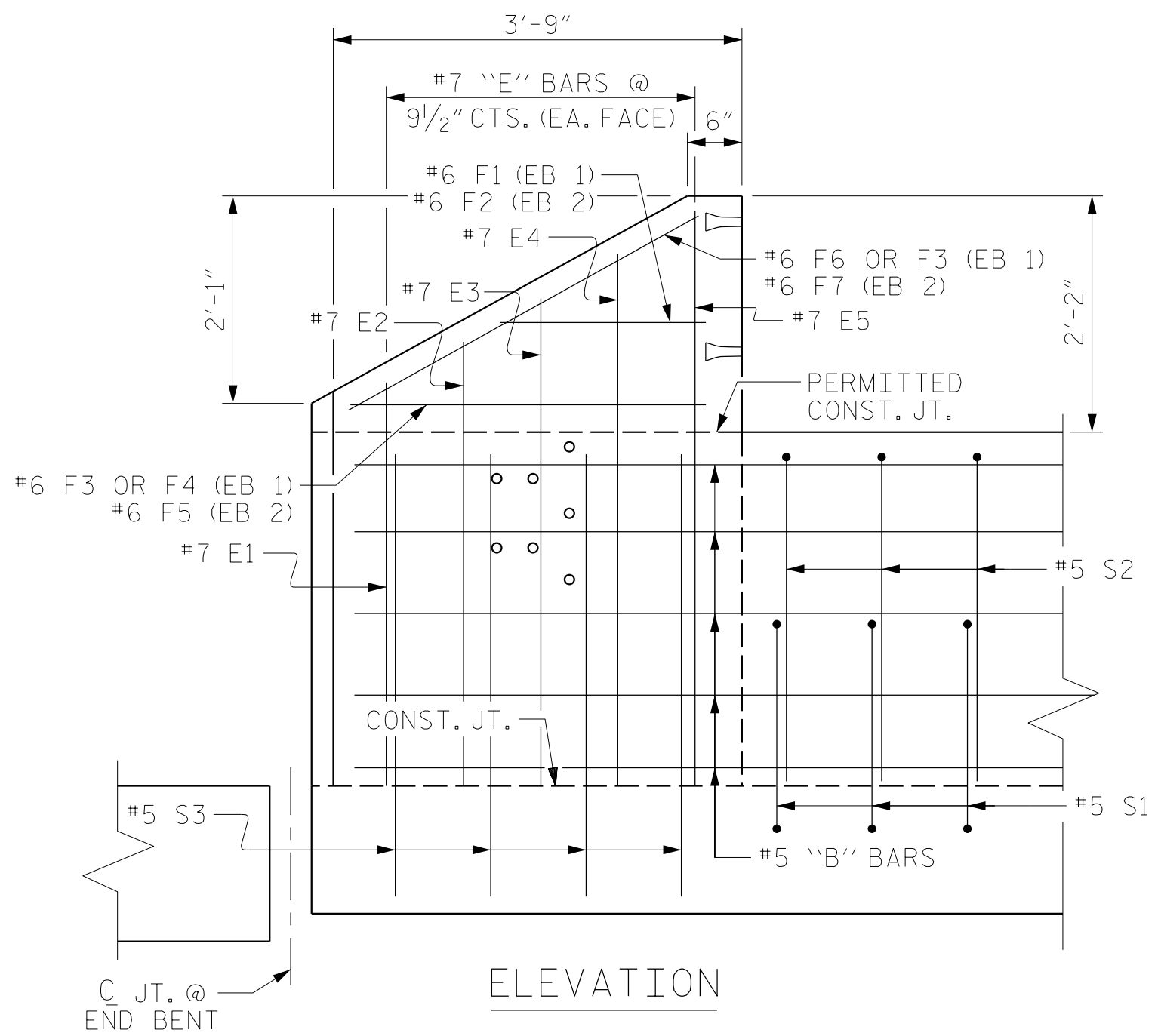
SECTION S-S AT DAM IN OPEN JOINT (THIS IS TO BE USED ONLY WHEN SLIP FORM IS USED)

PARAPET DETAILS

NOTES:
 THE CONCRETE PARAPET IN EACH SPAN SHALL NOT BE CAST UNTIL ALL SLAB CONCRETE IN THAT SPAN HAS BEEN CAST AND HAS REACHED A MINIMUM COMPRESSION STRENGTH OF 3,000 PSI.
 ALL REINFORCING STEEL IN THE CONCRETE PARAPET SHALL BE EPOXY COATED.
 SEE "RAIL POST SPACINGS AND END OF RAIL DETAILS" SHEET FOR CONCRETE INSERT DETAILS.
 SEE "GUARDRAIL ANCHORAGE DETAILS FOR METAL RAILS" SHEET FOR GUARDRAIL ANCHOR ASSEMBLY.
 GROOVED CONTRACTION JOINTS, 1/2" IN DEPTH, SHALL BE TOOLED IN ALL EXPOSED FACES OF THE PARAPET AND IN ACCORDANCE WITH ARTICLE 825-10(B) OF THE STANDARD SPECIFICATIONS, THE CONTRACTION JOINT SHALL BE LOCATED AT EACH THIRD POINT BETWEEN PARAPET EXPANSION JOINTS. ONLY ONE CONTRACTION JOINT IS REQUIRED AT MIDPOINT OF PARAPET SEGMENTS LESS THAN 20 FEET IN LENGTH AND NO CONTRACTION JOINTS ARE REQUIRED FOR THOSE SEGMENTS LESS THAN 10 FEET IN LENGTH.
 #5 "S" BARS MAY BE SHIFTED AS NECESSARY TO CLEAR EXPANSION JOINTS IN PARAPET.



END VIEW



ELEVATION

END POST FOR TWO BAR RAIL

BAR CALLOUTS FOR TYPICAL FOR EACH END BENT UNLESS NOTED OTHERWISE

DRAWN BY :	TWL	DATE :	05/2020
CHECKED BY :	MRA	DATE :	05/2020
DESIGN ENGINEER OF RECORD:	RLB	DATE :	09/2021

DOCUMENT NOT CONSIDERED FINAL UNLESS ALL SIGNATURES COMPLETED

RS&H Architects-Engineers-Planners, Inc.
 8521 Six Forks Road, Suite 400
 919-926-4100 FAX 919-846-9080
 www.rsandh.com
 North Carolina License No. 5073-F-0403-C-02

PROJECT NO. U-5798A
 CUMBERLAND COUNTY
 STATION: 76+80.00 -L-

SHEET 2 OF 5

REVISIONS						SHEET NO.	
NO.	BY:	DATE:	NO.	BY:	DATE:	S1-21	
1			3			TOTAL SHEETS	
2			4			43	