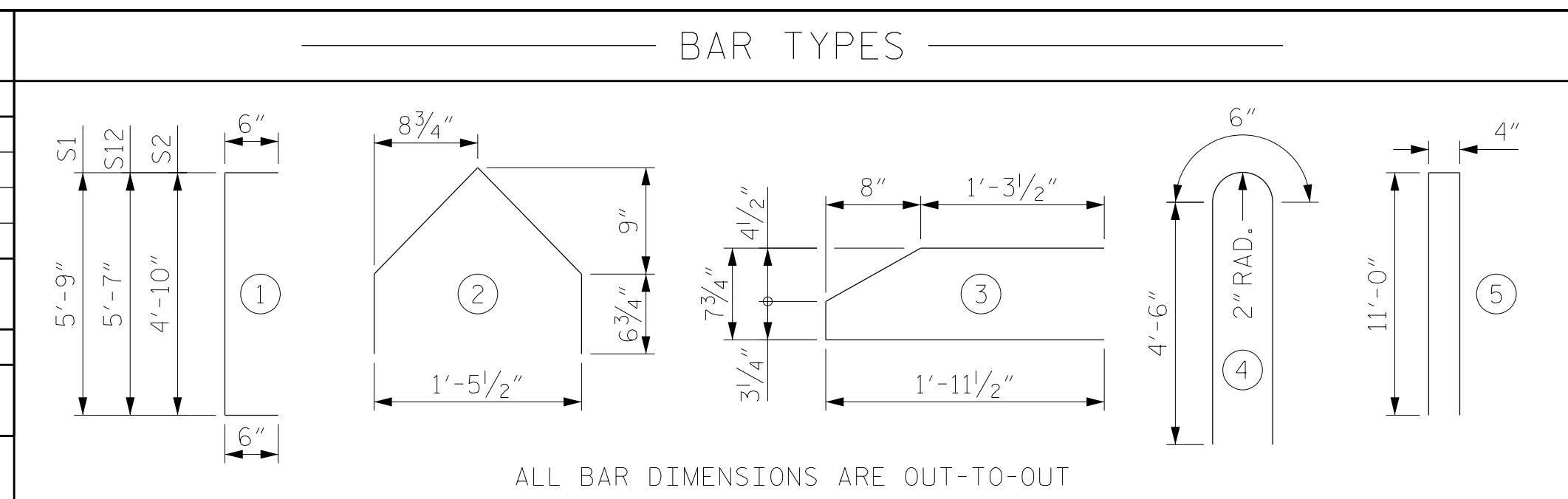


SPAN A GIRDER DIMENSIONS					
GIRDER	L	A	B	C	D
GIRDER A1	132'-0 ¹ / ₈ "	1'-5 ¹ / ₁₆ "	54	6 ¹ / ₄ "	120
GIRDER A2	126'-10 ¹ / ₁₆ "	1'-1 ¹ / ₁₆ "	51	11 ¹ / ₄ "	114
GIRDER A3	121'-8 ¹ / ₁₆ "	9 ¹ / ₁₆ "	48	10 ¹ / ₄ "	109
GIRDER A4	116'-6 ¹ / ₁₆ "	1'-2 ¹ / ₁₆ "	44	9 ¹ / ₄ "	104

SPAN B GIRDER DIMENSIONS					
GIRDER	L	A	B	C	D
GIRDERS B1, B2, B3, & B4	122'-9 ¹ / ₂ "	1'-3 ³ / ₄ "	48	10 ⁵ / ₁₆ "	110



ALL BAR DIMENSIONS ARE OUT-TO-OUT

SPAN A			SPAN B		
0.6" Ø L. R. GRADE 270 STRANDS			0.6" Ø L. R. GRADE 270 STRANDS		
AREA (SQ. IN.)	ULTIMATE STRENGTH (LBS/STRAND)	APPLIED PRESTRESS (LBS/STRAND)	AREA (SQ. IN.)	ULTIMATE STRENGTH (LBS/STRAND)	APPLIED PRESTRESS (LBS/STRAND)
0.217	58,600	43,950	0.217	58,600	43,950

REINF. STEEL FOR ONE GIRDER						REINF. STEEL FOR ONE GIRDER					
BAR	NUMBER	SIZE	TYPE	LENGTH	WEIGHT	BAR	NUMBER	SIZE	TYPE	LENGTH	WEIGHT
S1	82	#5	1	6'-9"	577	S1	82	#5	1	6'-9"	577
S2	136	#5	1	5'-10"	827	S2	130	#5	1	5'-10"	791
S2	133	#5	1	5'-10"	809	S4	260	#3	3	4'-4"	424
S2	130	#5	1	5'-10"	791	S5	34	#3	2	3'-3"	42
S2	126	#5	1	5'-10"	767	S6	40	#5	STR	4'-9"	198
S3	16	#4	STR	11'-6"	123	*S7	10	#5	STR	3'-8"	38
S4	272	#3	3	4'-4"	443	S8	134	#4	STR	3'-8"	328
S4	266	#3	3	4'-4"	433	S9	16	#4	STR	8'-0"	86
S4	260	#3	3	4'-4"	424	S10	8	#4	4	9'-6"	51
S4	252	#3	3	4'-4"	411	S11	8	#6	STR	24'-0"	288
S5	34	#3	2	3'-3"	42	S12	48	#5	1	6'-7"	330
S6	40	#5	STR	4'-9"	198	S13	10	#4	5	22'-4"	149
*S7	10	#5	STR	3'-8"	38						

GIRDER	BAR	NUMBER	SIZE	TYPE	LENGTH	WEIGHT	GIRDER	BAR	NUMBER	SIZE	TYPE	LENGTH	WEIGHT
GIRDER 1	S2	136	#5	1	5'-10"	827	GIRDER 2	S2	130	#5	1	5'-10"	791
GIRDER 2	S2	133	#5	1	5'-10"	809	GIRDER 3	S4	260	#3	3	4'-4"	424
GIRDER 3	S2	130	#5	1	5'-10"	791	GIRDER 4	S5	34	#3	2	3'-3"	42
GIRDER 4	S2	126	#5	1	5'-10"	767	INTERIOR	S6	40	#5	STR	4'-9"	198
INTERIOR	S3	16	#4	STR	11'-6"	123	GIRDER 1	*S7	10	#5	STR	3'-8"	38
GIRDER 1	S4	272	#3	3	4'-4"	443	GIRDER 2	S8	134	#4	STR	3'-8"	328
GIRDER 2	S4	266	#3	3	4'-4"	433	GIRDER 3	S9	16	#4	STR	8'-0"	86
GIRDER 3	S4	260	#3	3	4'-4"	424	GIRDER 4	S10	8	#4	4	9'-6"	51
GIRDER 4	S4	252	#3	3	4'-4"	411	EXTERIOR	S11	8	#6	STR	24'-0"	288
	S5	34	#3	2	3'-3"	42	INTERIOR	S12	48	#5	1	6'-7"	330
	S6	40	#5	STR	4'-9"	198	GIRDER 1	S13	10	#4	5	22'-4"	149
	*S7	10	#5	STR	3'-8"	38							

QUANTITIES FOR ONE GIRDER		
REINFORCING STEEL LB.	8,500 PSI CONCRETE C.Y.	0.6" Ø L. R. GRADE NO.
3302	31.4	65

GIRDERS REQUIRED		
NUMBER	LENGTH	TOTAL LENGTH
4	122'-9 ¹ / ₂ "	491'-2"

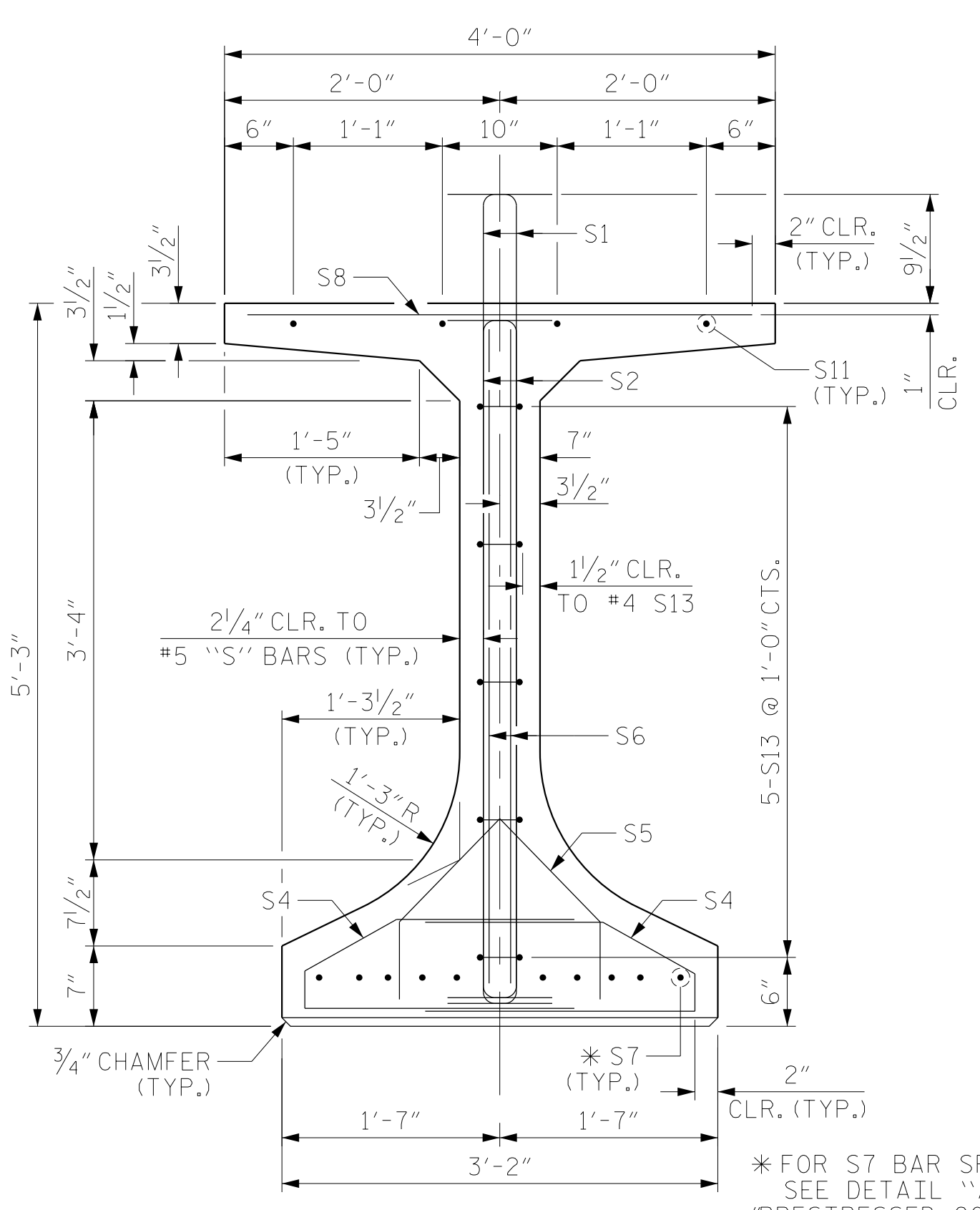
QUANTITIES FOR ONE GIRDER		
REINFORCING STEEL LB.	8,500 PSI CONCRETE C.Y.	0.6" Ø L. R. GRADE NO.
GIRDER 1: 3423	GIRDER 2: 3447	GIRDER 3: 3388
GIRDER 4: 3223		

GIRDERS REQUIRED		
NUMBER	LENGTH	TOTAL LENGTH
4	VARIES	497'-0 ⁹ / ₁₆ "

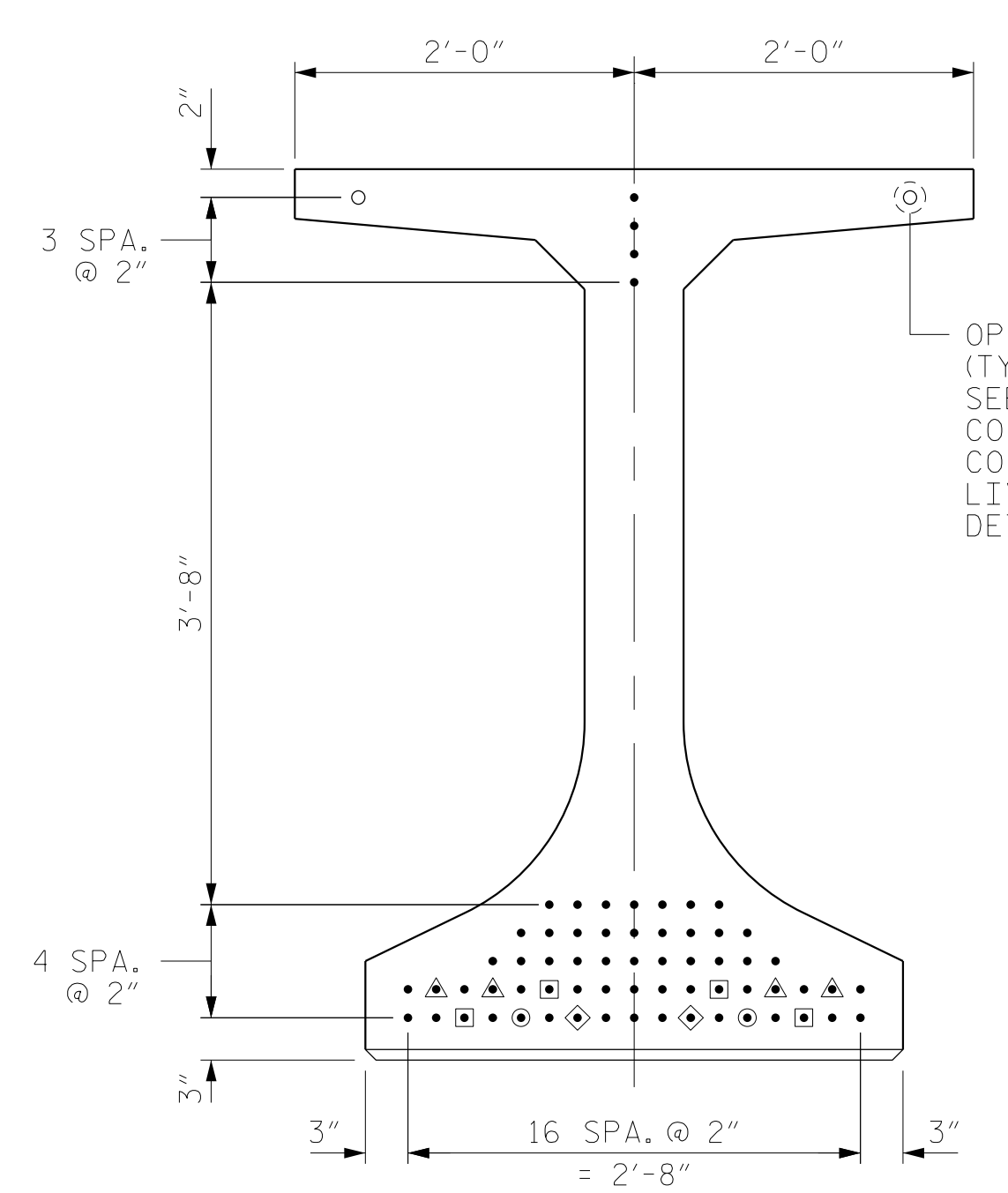
* NOTE: S7 BARS SHALL BE BENT BEFORE SHIPMENT. HEAT BENDING SHALL NOT BE ALLOWED.

DEBONDING LEGEND

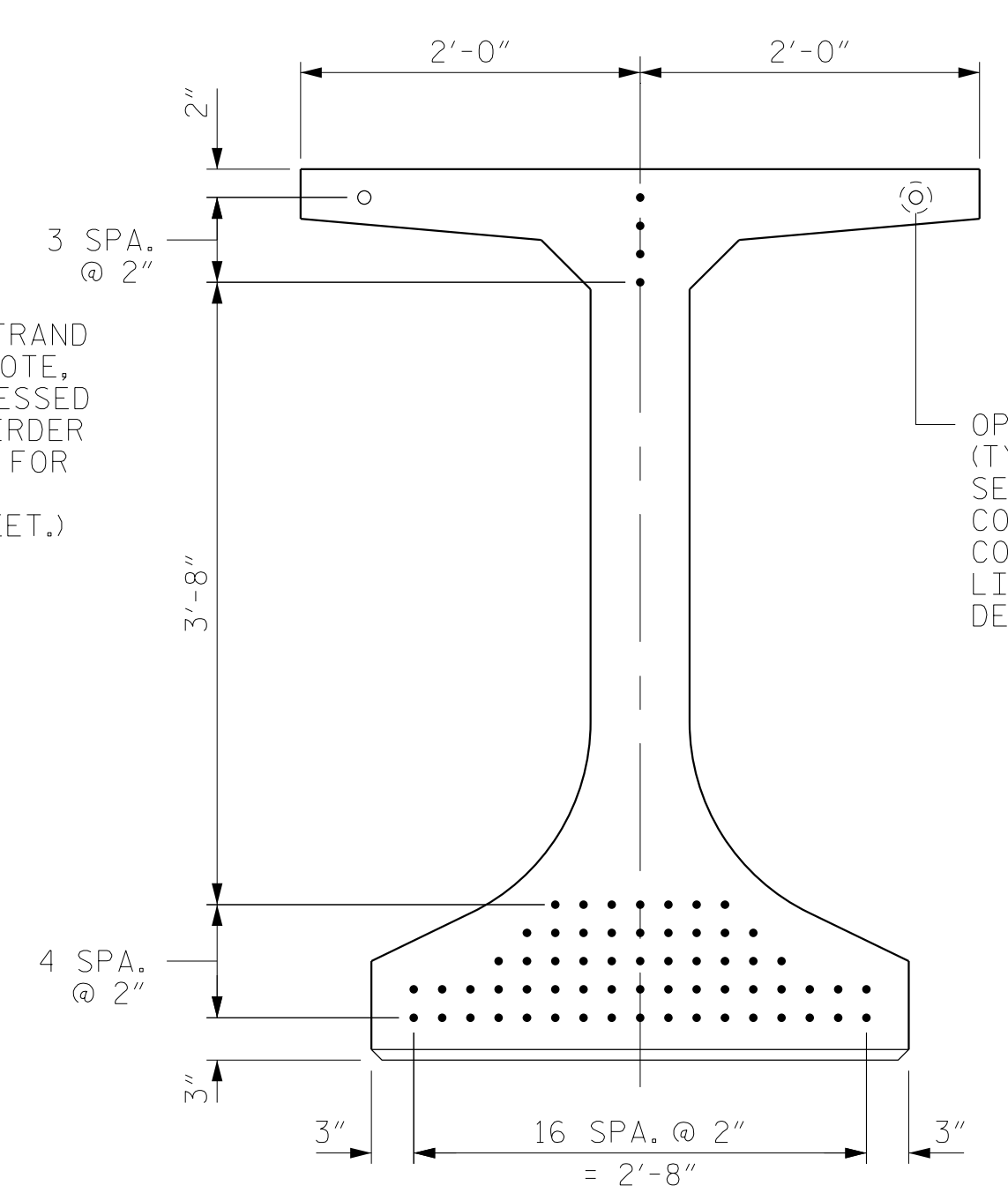
- FULLY BONDED STRANDS
- ◊ DEBONDED FOR 36'-0" FROM END OF GIRDER
- ◻ DEBONDED FOR 24'-0" FROM END OF GIRDER
- ◼ DEBONDED FOR 12'-0" FROM END OF GIRDER
- ▲ DEBONDED FOR 4'-0" FROM END OF GIRDER



SECTION A-A



AT END OF GIRDER



AT C OF GIRDER

0.6" Ø LOW RELAXATION STRAND LAYOUT

(65 STRAND REQUIRED)

DRAWN BY : MRA	DATE : 04/2020
CHECKED BY : MKO	DATE : 04/2021
DESIGN ENGINEER OF RECORD: RLB	DATE : 09/2021

DOCUMENT NOT CONSIDERED FINAL UNLESS ALL SIGNATURES COMPLETED

PROJECT NO. U-5798A
 CUMBERLAND COUNTY
 STATION: 76+80.00 -L-

REVISIONS						SHEET NO.
NO.	BY:	DATE:	NO.	BY:	DATE:	SHEET NO.
1			3			TOTAL SHEETS
2			4			43