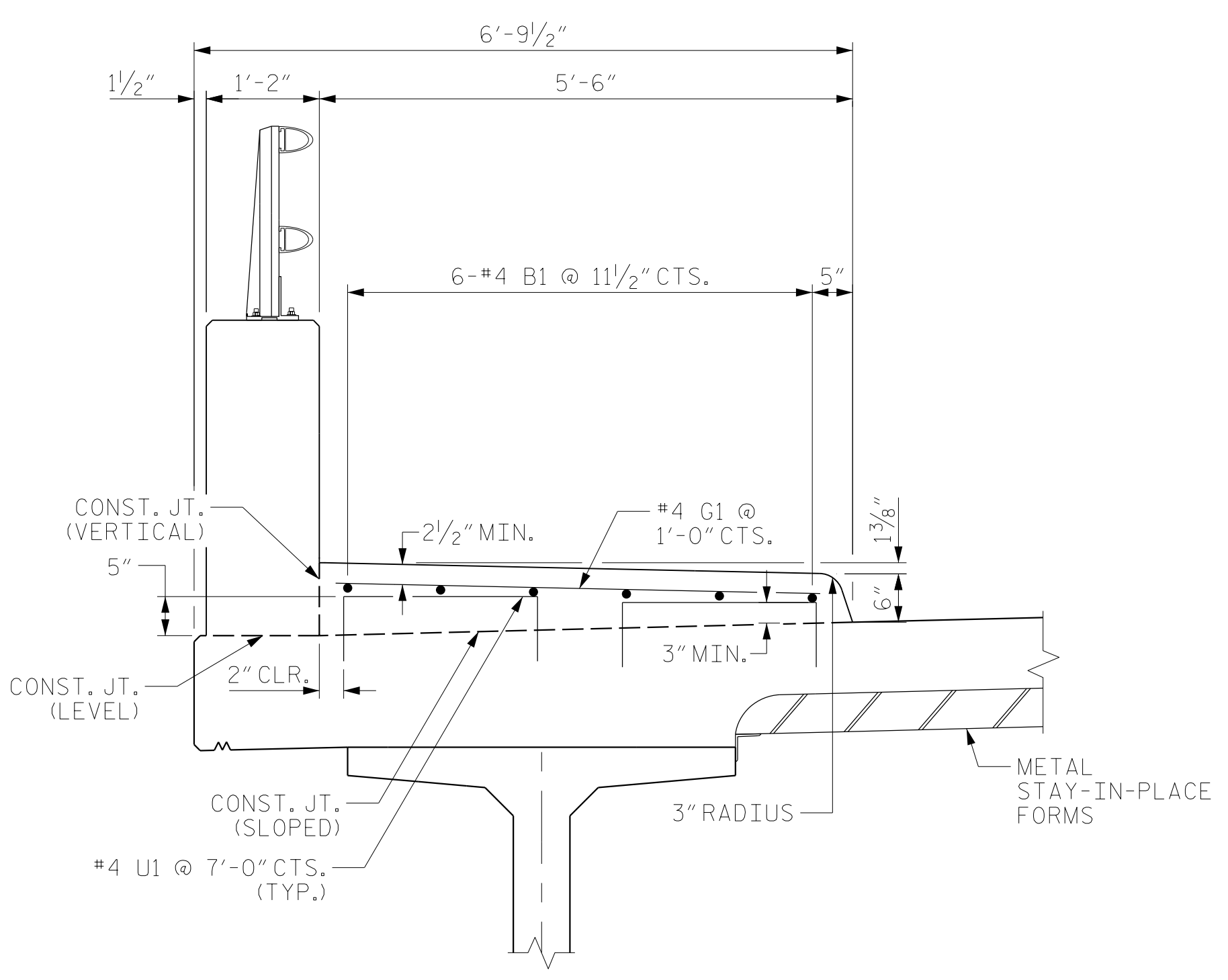


PLAN OF SIDEWALK

NOTES

- GROOVED CONTRACTION JOINTS, 1/2" IN DEPTH, SHALL BE TOOLED IN ALL EXPOSED FACES OF THE SIDEWALK IN ACCORDANCE WITH ARTICLE 825-10(B) OF THE STANDARD SPECIFICATIONS. THE CONTRACTION JOINTS SHALL BE LOCATED AT A SPACING OF 8 FT. TO 10 FT. BETWEEN EXPANSION JOINTS. NO CONTRACTION JOINTS WILL BE REQUIRED FOR SEGMENTS LESS THAN 10 FEET IN LENGTH.
- CONTRACTION JOINTS SHALL BE NORMAL TO BARRIER.
- ALL REINFORCING STEEL IN THE SIDEWALK SHALL BE EPOXY COATED.
- FOR SIDEWALK ON APPROACH SLABS, SEE APPROACH SLAB DRAWINGS.
- PAYMENT FOR THE SIDEWALK SHALL BE INCLUDED IN THE PAY ITEM FOR "REINFORCED CONCRETE DECK SLAB".
- U1 BARS MAY BE PUSHED INTO GREEN CONCRETE AFTER SPAN HAS BEEN SCREEDED OFF.
- SIDEWALK IN A CONTINUOUS UNIT SHALL NOT BE CAST UNTIL ALL SLAB CONCRETE IN THE UNIT HAS BEEN CAST AND HAS REACHED A MINIMUM COMPRESSIVE STRENGTH OF 3000 PSI.
- FOR CONCRETE PARAPET REINFORCING STEEL AND DETAILS, SEE "CONCRETE PARAPET" SHEETS.
- FOR SIDEWALK COVER PLATE DETAILS AT END BENTS, SEE "EXPANSION JOINT SEAL DETAILS FOR SIDEWALK" SHEETS.



SECTION A-A

BILL OF MATERIAL						BAR TYPES	
BAR	NO.	SIZE	TYPE	LENGTH	WEIGHT		
*B1	42	#4	STR	38'-6"	1080		
*G1	259	#4	STR	5'-2"	894		
*U1	73	#4	1	3'-4"	163		
* EPOXY COATED REINFORCING STEEL					2,137 LBS.		
CLASS AA CONCRETE					32.3 C.Y.		

2'-0"
①

ALL BAR DIMENSIONS ARE OUT TO OUT

PROJECT NO. U-5798A  
CUMBERLAND COUNTY  
 STATION: 76+80.00 -L-

**RS&H**  
 RS&H Architects-Engineers-Planners, Inc.  
 8521 Six Forks Road, Suite 400  
 919-926-4100 FAX 919-846-9080  
 www.rsandh.com  
 North Carolina License Nos. 50073-F-0403-C-02

STATE OF NORTH CAROLINA DEPARTMENT OF TRANSPORTATION RALEIGH						SHEET NO.	
SUPERSTRUCTURE						S1-9	
SIDEWALK DETAILS						TOTAL SHEETS	
LEFT LANE						43	
REVISIONS							
NO.	BY:	DATE:	NO.	BY:	DATE:		
1			3				
2			4				

DRAWN BY : MRA DATE : 04/2020  
 CHECKED BY : NSC DATE : 04/2021  
 DESIGN ENGINEER OF RECORD: RLB DATE : 09/2021

DOCUMENT NOT CONSIDERED FINAL UNLESS ALL SIGNATURES COMPLETED