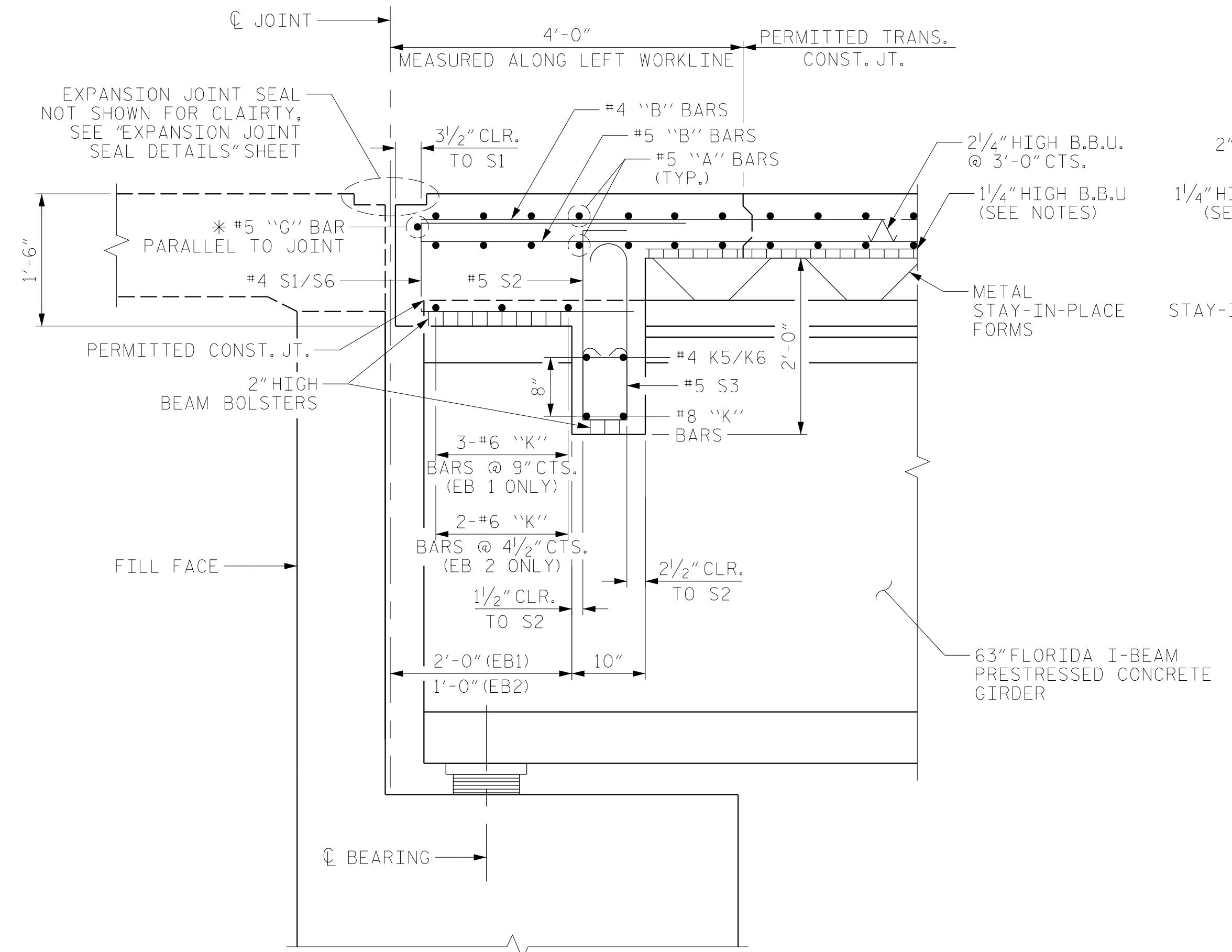
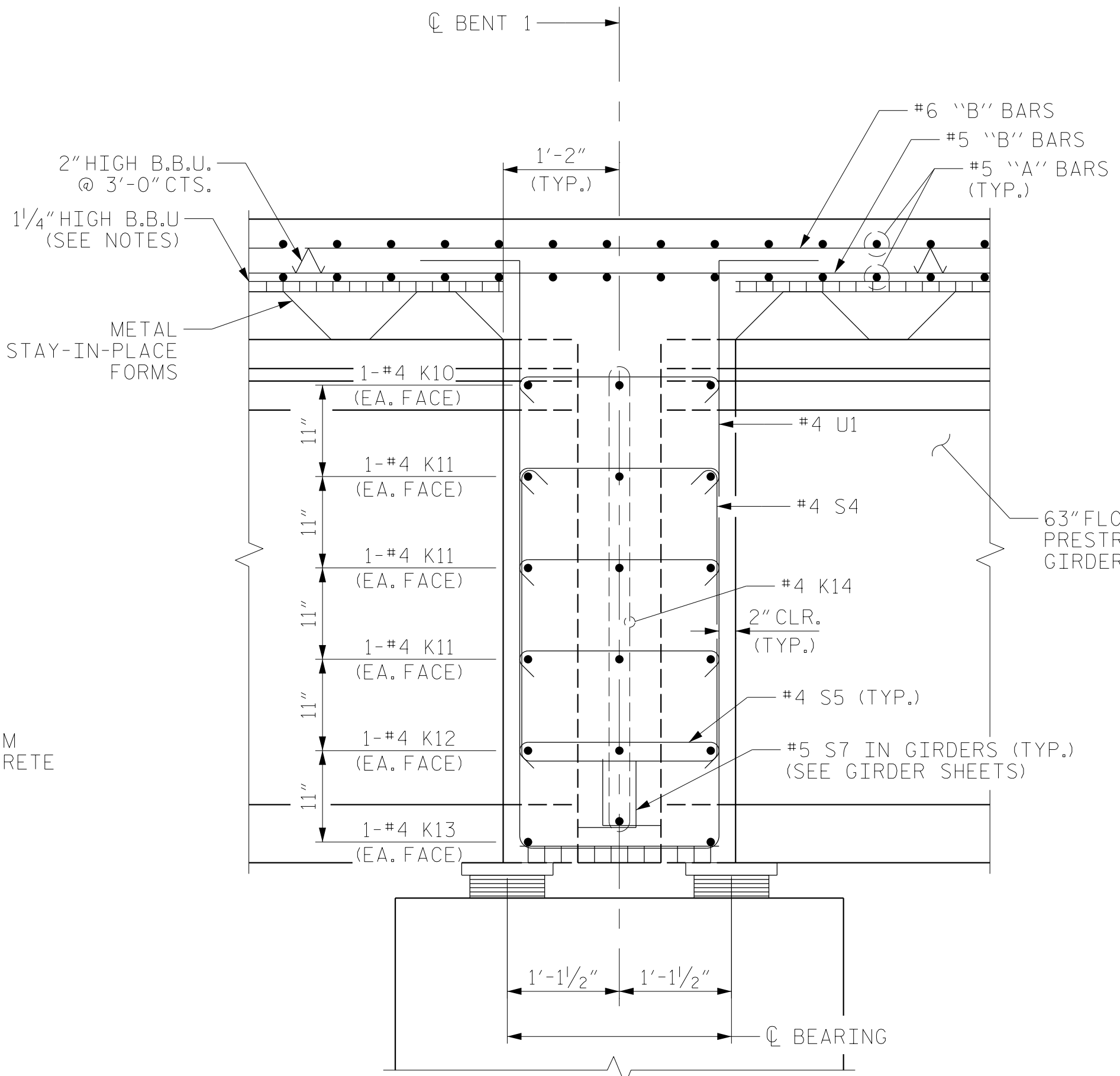


NOTES:
 FOR NOTES, SEE SHEET 1 OF 2.
 FOR EXPANSION JOINT SEAL OPENING, SEE "EXPANSION JOINT SEAL DETAILS" SHEET.

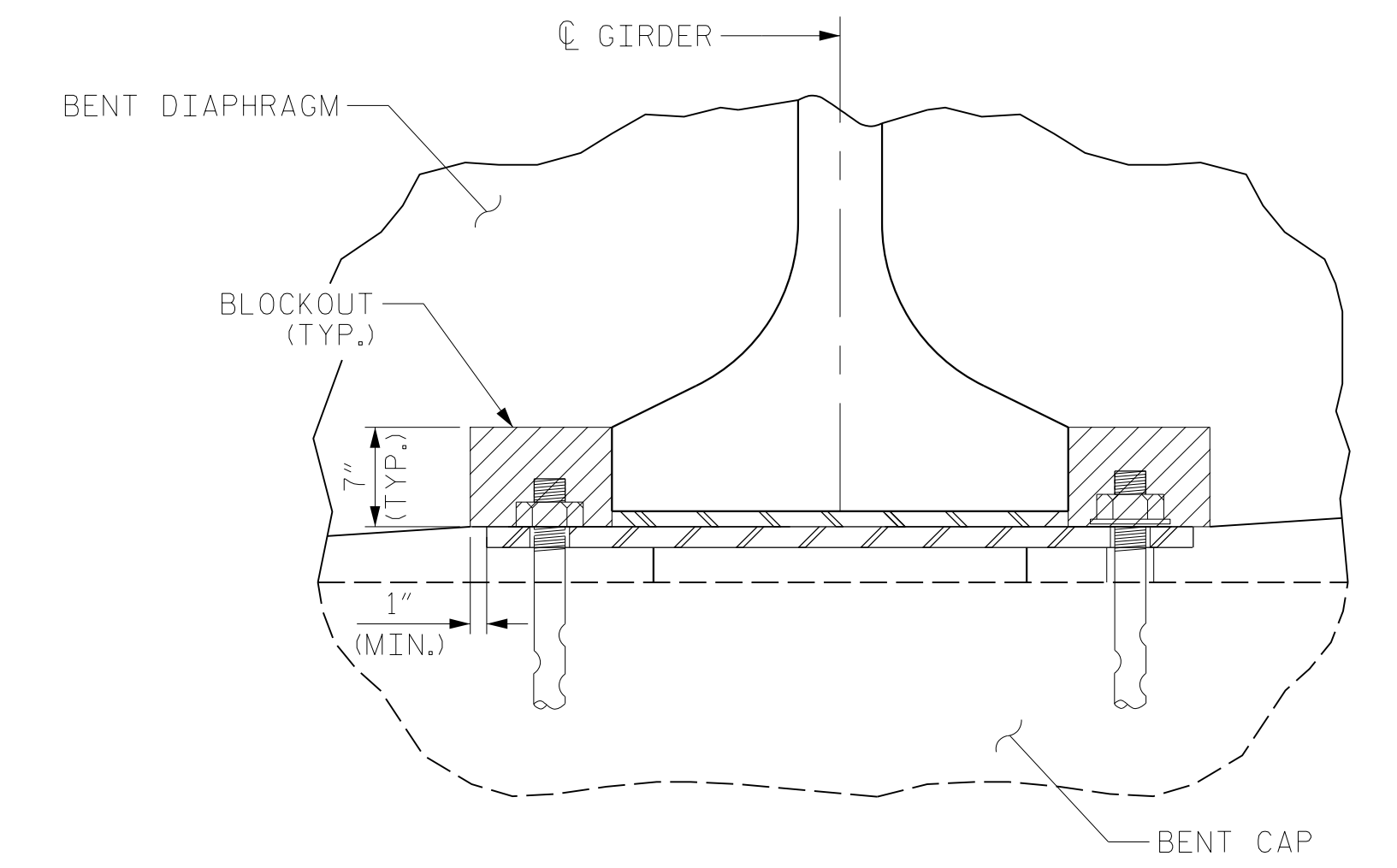


SECTION THROUGH END BENT DIAPHRAGM

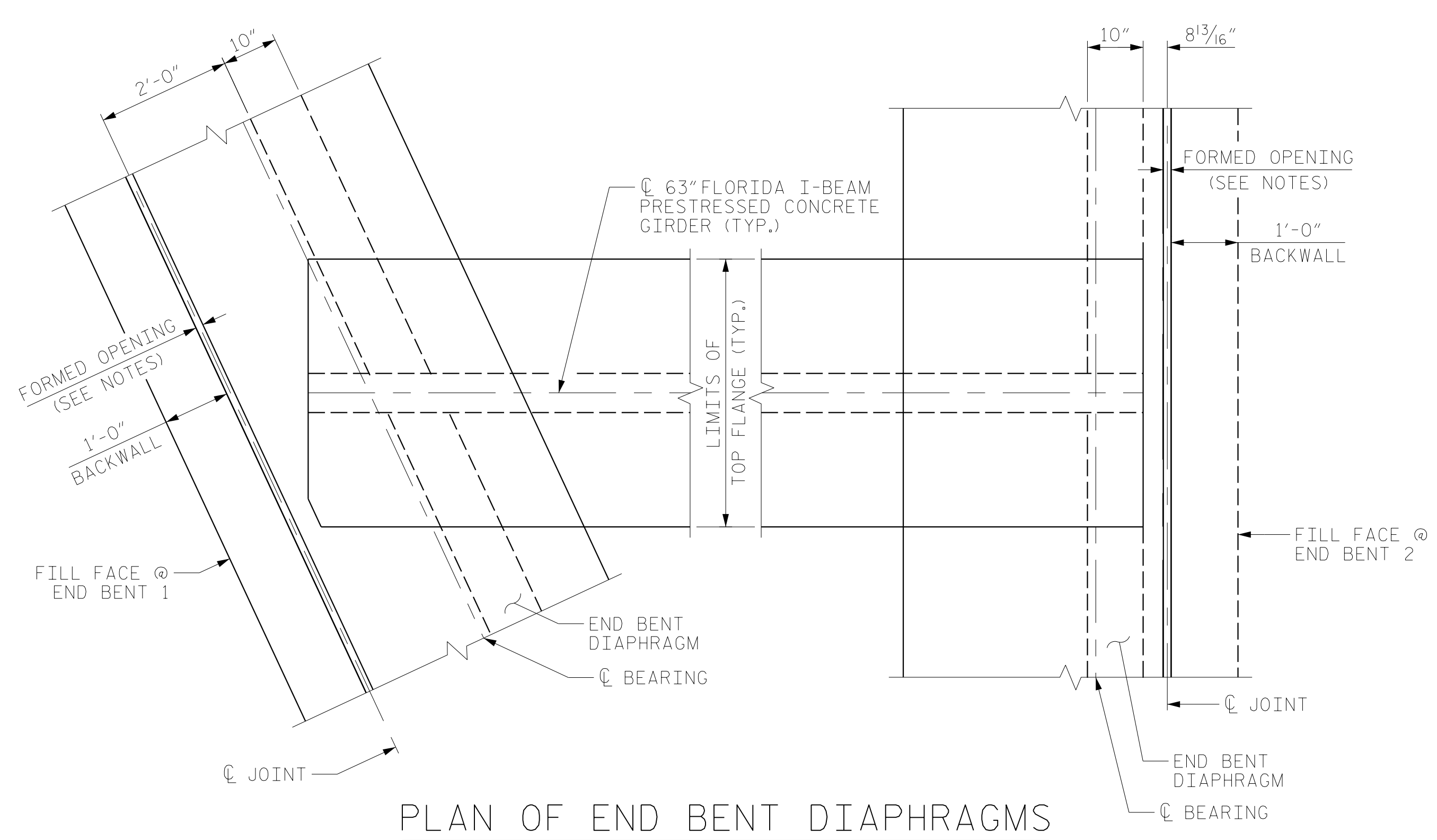
* "G" BAR MAY BE SHIFTED SLIGHTLY, AS NEEDED, TO CLEAR REINFORCING STEEL AND STIRRUPS
 END BENT 1 SHOWN, END BENT 2 SIMILAR



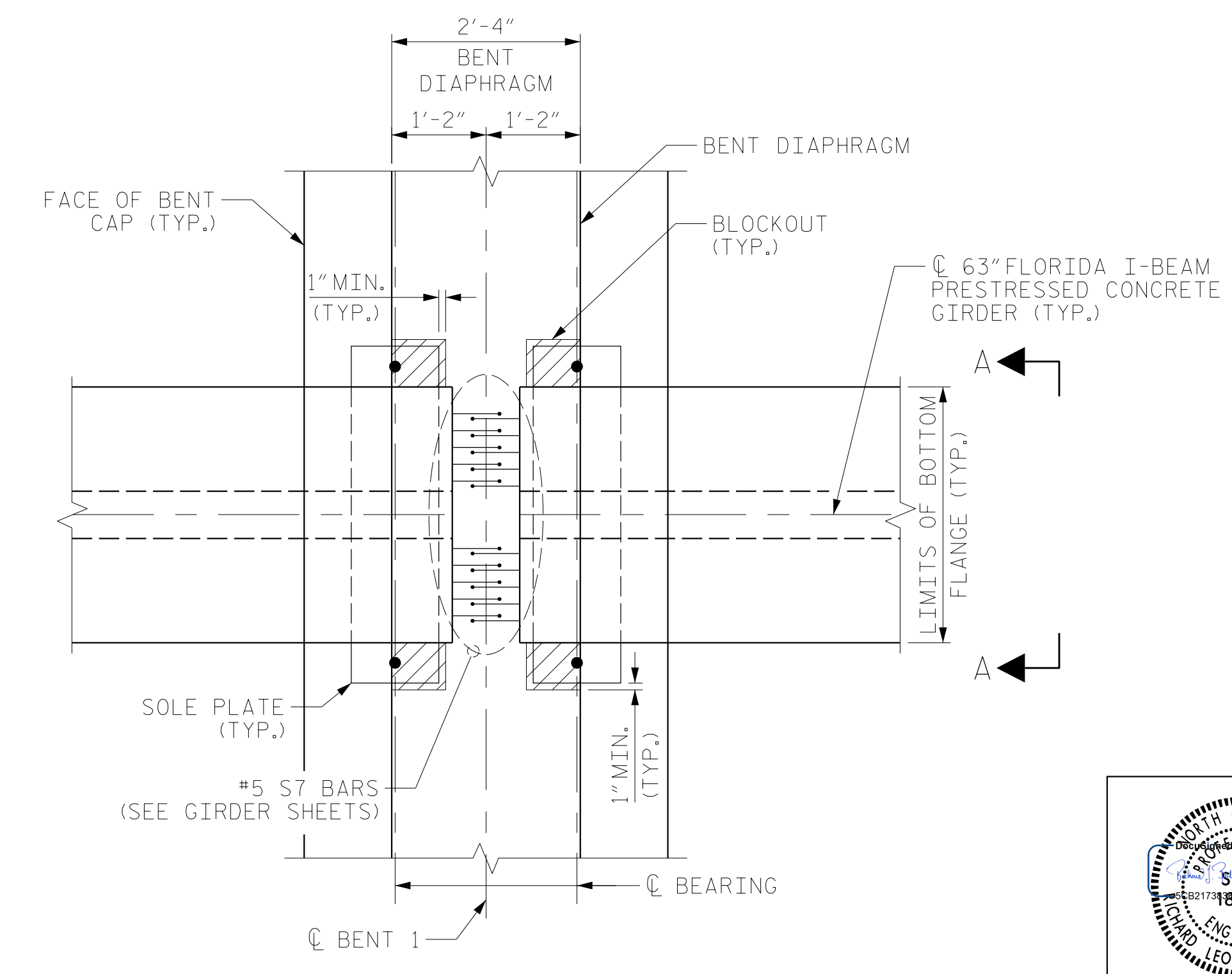
SECTION THROUGH BENT DIAPHRAGM



VIEW A-A



PLAN OF END BENT DIAPHRAGMS



BENT DIAPHRAGM BLOCKOUT DETAIL

PROJECT NO. U-5798A
CUMBERLAND COUNTY
 STATION: 76+80.00 -L-

SHEET 2 OF 2



RS&H
 RS&H Architects-Engineers-Planners, Inc.
 8521 Six Forks Road, Suite 400
 919-926-4100 FAX 919-846-9080
 www.rsandh.com
 North Carolina License No. 50737-5403-C&E

STATE OF NORTH CAROLINA
 DEPARTMENT OF TRANSPORTATION
 RALEIGH
 SUPERSTRUCTURE
 TYPICAL SECTION
 DETAILS
 LEFT LANE

| REVISIONS | | | | | | SHEET NO. |
|-----------|-----|-------|-----|-----|-------|--------------|
| NO. | BY: | DATE: | NO. | BY: | DATE: | S1-6 |
| 1 | | | 3 | | | TOTAL SHEETS |
| 2 | | | 4 | | | 43 |

DRAWN BY : MRA DATE : 04/2020
 CHECKED BY : NSC DATE : 04/2021
 DESIGN ENGINEER OF RECORD: RLB DATE : 09/2021

DOCUMENT NOT CONSIDERED
 FINAL UNLESS ALL
 SIGNATURES COMPLETED