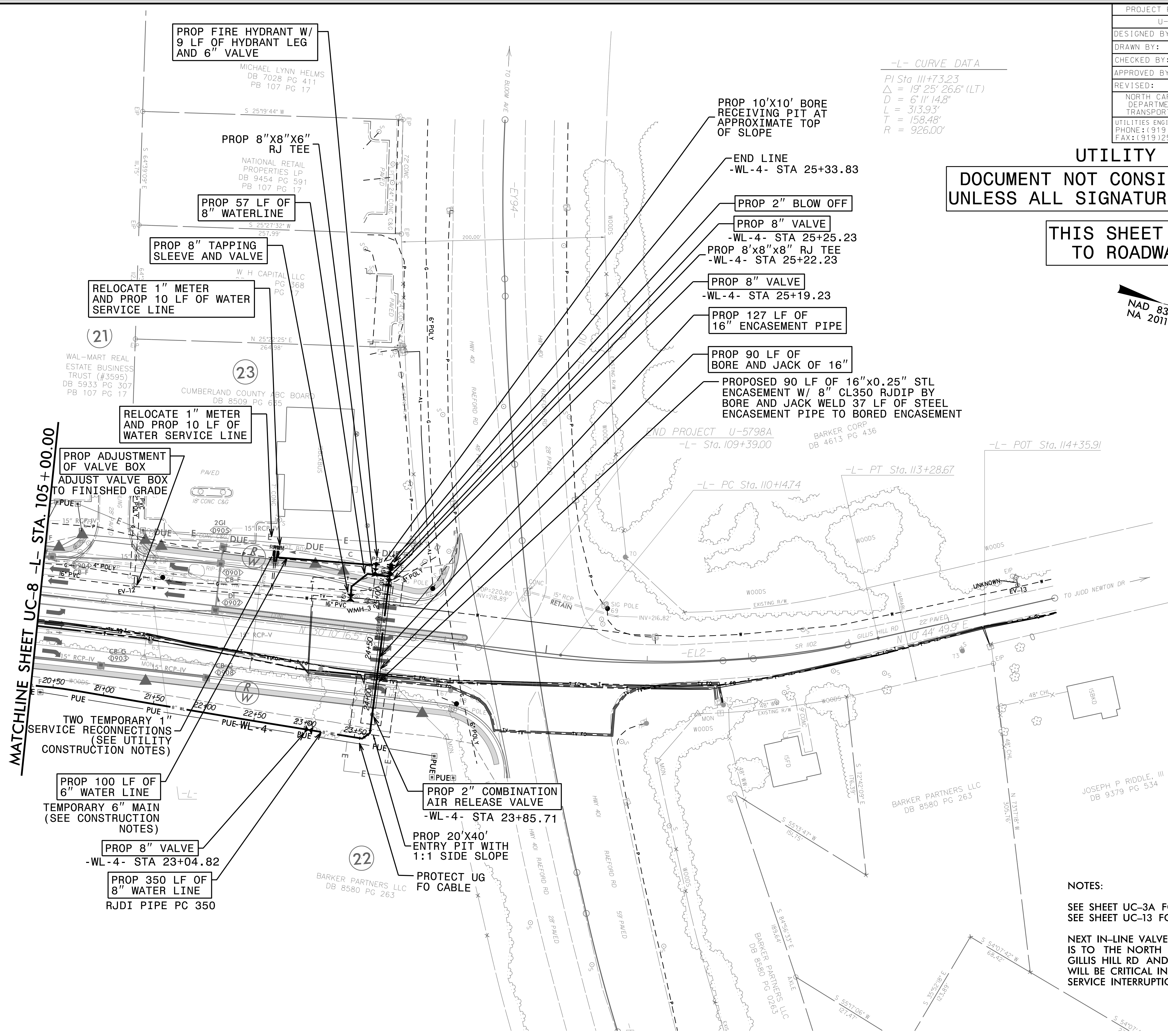
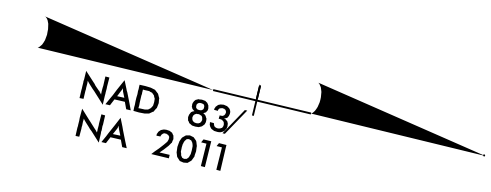


PROJECT REFERENCE NO.	SHEET NO.
U-5798A	UC-9
DESIGNED BY: AAA	UTILITY CONSTRUCTION PLANS ONLY
DRAWN BY: KNS	
CHECKED BY: BRO	
APPROVED BY: BRO	
REVISED:	
NORTH CAROLINA DEPARTMENT OF TRANSPORTATION	
UTILITIES ENGINEERING SEC. PHONE: (919) 707-6690 FAX: (919) 250-4151	

-L- CURVE DATA
 PI Sta 111+73.23
 $\Delta = 19' 25" 26.6" (LT)$
 $D = 6" 11' 14.8"$
 $L = 313.93'$
 $T = 158.48'$
 $R = 926.00'$

UTILITY CONSTRUCTION
DOCUMENT NOT CONSIDERED FINAL
UNLESS ALL SIGNATURES COMPLETED

THIS SHEET CORRESPONDS
TO ROADWAY SHEET 9



MATCHLINE SHEET UC-8 -L- STA. 105+00.00

END PROJECT U-5798A
 -L- Sta. 109+39.00

PROPOSED 845 POUNDS OF
 DUCTILE IRON WATER PIPE FITTINGS

NOTES:
 SEE SHEET UC-3A FOR REFERENCED NOTES.
 SEE SHEET UC-13 FOR -WL-4- PROFILE.
 NEXT IN-LINE VALVE ON 16" WATER MAIN
 IS TO THE NORTH AT THE INTERSECTION OF
 GILLIS HILL RD AND OLD RAEFORD RD. IT
 WILL BE CRITICAL IN PERFORMING THE
 SERVICE INTERRUPTION ON THE 16" MAIN.

I:\5-DEC-2021\644 L:\Projects\Utility\111e Public Works Commission\2019061600RA - U-5798 Gills Hill Road Utility Coordination\CADD\Microstation\Utilities\Engineering\UC\Proj\U-5798A.ut_Rdy091.UC09_psh.dgn