

PROJECT REFERENCE NO.	SHEET NO.
U-5798A	UC-7
DESIGNED BY: AAA	
DRAWN BY: KNS	
CHECKED BY: BRD	
APPROVED BY: BRD	
REVISED:	
NORTH CAROLINA DEPARTMENT OF TRANSPORTATION	
UTILITIES ENGINEERING SEC. PHONE: (919) 707-6690 FAX: (919) 250-4151	UTILITY CONSTRUCTION PLANS ONLY

UTILITY CONSTRUCTION

DOCUMENT NOT CONSIDERED FINAL UNLESS ALL SIGNATURES COMPLETED

THIS SHEET CORRESPONDS TO ROADWAY SHEET 7

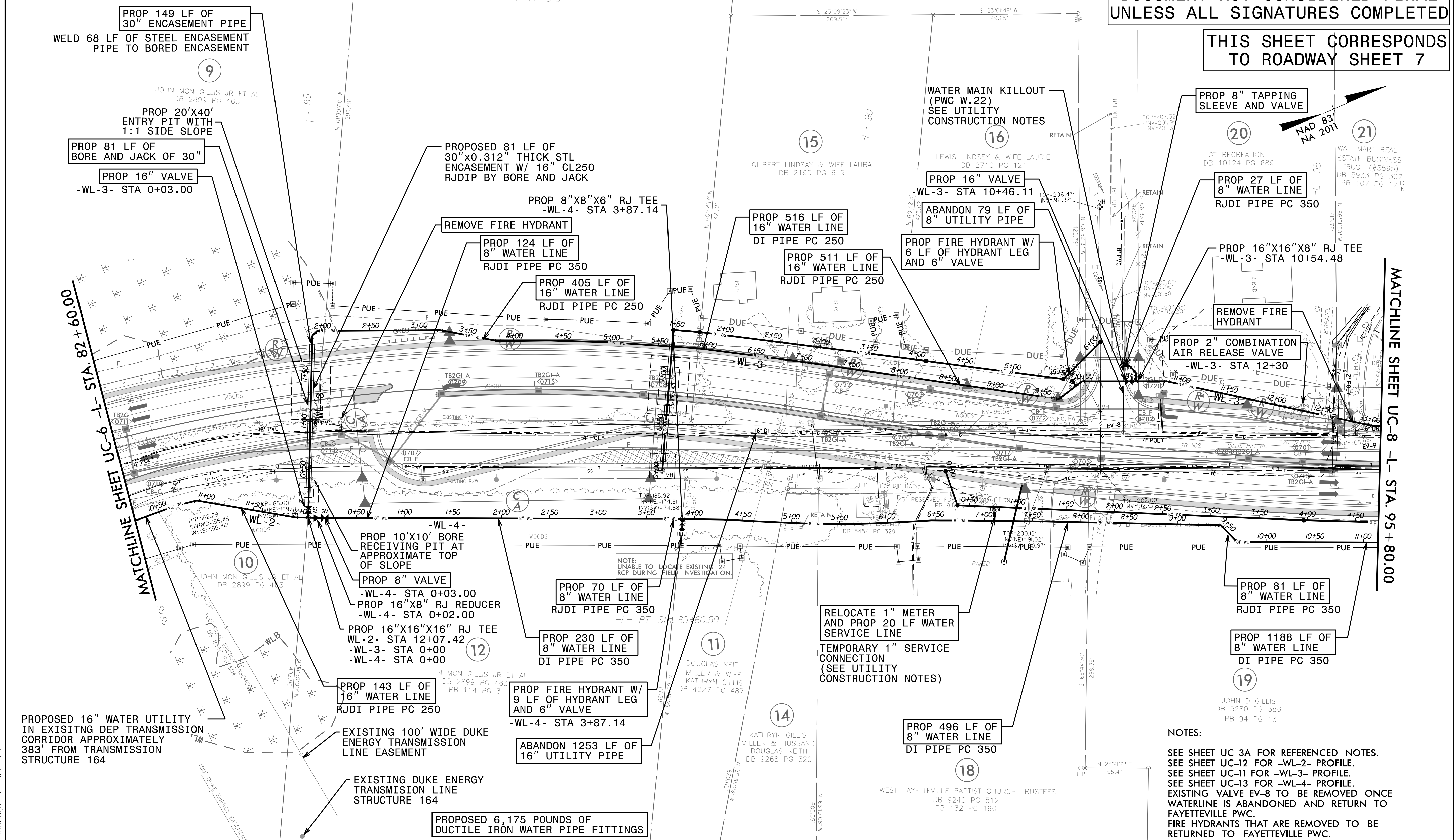
DUKE ENERGY NOTES:
 THE DUKE ENERGY HAS A 230KV TRANSMISSION LINE AND REQUIRES A MINIMUM APPROACH DISTANCE OF 20' FROM ENERGIZED WIRES TO BE MAINTAINED AT ALL TIMES.

PROPOSED WATER LINE SHALL HAVE SUFFICIENT COVER TO SUPPORT THE WEIGHT OF HEAVY EQUIPMENT UP TO 80,000 LBS

NO ABOVE GROUND APPURTENANCES, SUCH AS FIRE HYDRANTS OR VALVES, SHALL BE ALLOWED WITHIN THE DUKE ENERGY EASEMENT.

THE LIMITS OF THE DUKE ENERGY EASEMENT SHALL NOT BE USED FOR STOCKPILING GRADE OR CONSTRUCTION MATERIALS.

THE SANITARY SEWER SHOWN WITHIN THE DUKE ENERGY TRANSMISSION EASEMENT IS EXISTING.



NOTES:
 SEE SHEET UC-3A FOR REFERENCED NOTES.
 SEE SHEET UC-12 FOR -WL-2- PROFILE.
 SEE SHEET UC-11 FOR -WL-3- PROFILE.
 SEE SHEET UC-13 FOR -WL-4- PROFILE.
 EXISTING VALVE EV-8 TO BE REMOVED ONCE WATERLINE IS ABANDONED AND RETURN TO FAYETTEVILLE PWC.
 FIRE HYDRANTS THAT ARE REMOVED TO BE RETURNED TO FAYETTEVILLE PWC.

02-FEB-2022 12:08 L:\Projects\Fayetteville Public Works Commission\2019061600RA - U-5798 Gills Hill Road Utility Coordination\CADD\Microstation\Utilities\Engineering\UC\ProJ\U-5798A.ut...Rdy07-UC07-ash.dgn
 sarakaya A1 WK02047