

PROJECT REFERENCE NO.	SHEET NO.
U-5798A	UC-6
DESIGNED BY: AAA	UTILITY CONSTRUCTION PLANS ONLY
DRAWN BY: KNS	
CHECKED BY: BRO	
APPROVED BY: BRO	
REVISED:	
NORTH CAROLINA DEPARTMENT OF TRANSPORTATION	
UTILITIES ENGINEERING SEC. PHONE: (919) 707-6690 FAX: (919) 250-4151	

UTILITY CONSTRUCTION

**DOCUMENT NOT CONSIDERED FINAL
UNLESS ALL SIGNATURES COMPLETED**

**THIS SHEET CORRESPONDS
TO ROADWAY SHEET 6**

DUKE ENERGY NOTES:

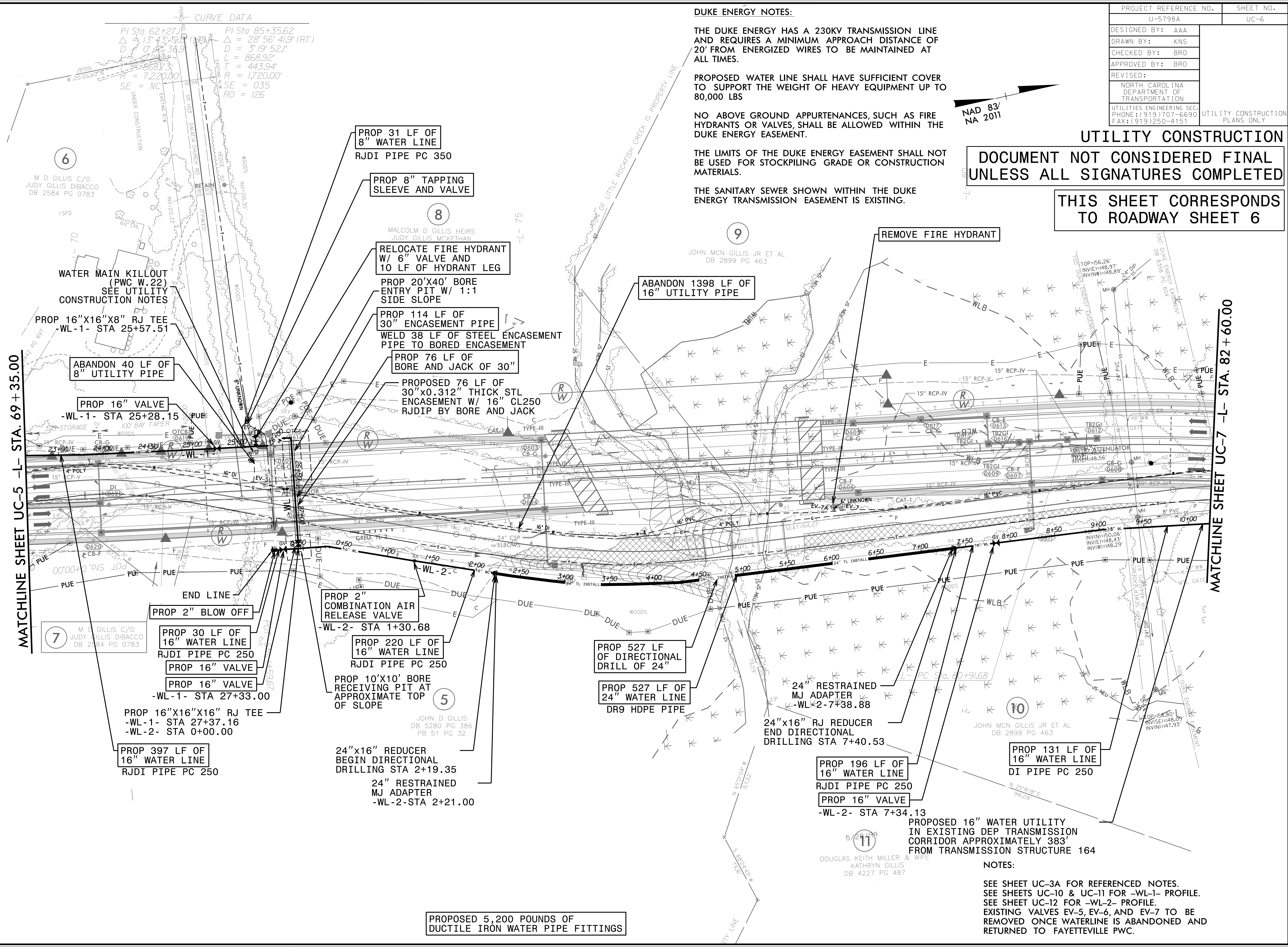
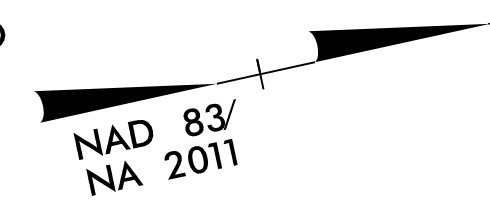
THE DUKE ENERGY HAS A 230KV TRANSMISSION LINE AND REQUIRES A MINIMUM APPROACH DISTANCE OF 20' FROM ENERGIZED WIRES TO BE MAINTAINED AT ALL TIMES.

PROPOSED WATER LINE SHALL HAVE SUFFICIENT COVER TO SUPPORT THE WEIGHT OF HEAVY EQUIPMENT UP TO 80,000 LBS

NO ABOVE GROUND APPURTENANCES, SUCH AS FIRE HYDRANTS OR VALVES, SHALL BE ALLOWED WITHIN THE DUKE ENERGY EASEMENT.

THE LIMITS OF THE DUKE ENERGY EASEMENT SHALL NOT BE USED FOR STOCKPILING GRADE OR CONSTRUCTION MATERIALS.

THE SANITARY SEWER SHOWN WITHIN THE DUKE ENERGY TRANSMISSION EASEMENT IS EXISTING.



MATCHLINE SHEET UC-5 -L- STA. 69 + 35.00

MATCHLINE SHEET UC-7 -L- STA. 82 + 60.00

CURVE DATA

PI Sta 62+27.15	PI Sta 85+35.62
$\Delta = 13^{\circ} 43' 19.9"$	$\Delta = 28^{\circ} 56' 41.9" (RT)$
$D = 0' 4" 38.9"$	$D = 3' 19' 52.1"$
$L = 868.92'$	$L = 443.94'$
$R = 7,220.00'$	$R = 1,720.00'$
$SE = NC$	$SE = 035$
	$RO = 126$

PROPOSED 5,200 POUNDS OF
DUCTILE IRON WATER PIPE FITTINGS

PROPOSED 16" WATER UTILITY
IN EXISTING DEP TRANSMISSION
CORRIDOR APPROXIMATELY 383'
FROM TRANSMISSION STRUCTURE 164

NOTES:

SEE SHEET UC-3A FOR REFERENCED NOTES.
SEE SHEETS UC-10 & UC-11 FOR -WL-1- PROFILE.
SEE SHEET UC-12 FOR -WL-2- PROFILE.
EXISTING VALVES EV-5, EV-6, AND EV-7 TO BE
REMOVED ONCE WATERLINE IS ABANDONED AND
RETURNED TO FAYETTEVILLE PWC.

02-FEB-2022 12:08 100% Utility Coordination\CADD\Microstation\Utilities\Engineering\UC\Proc\U-5798A.ut_Rdy\06_UC06_psh.dgn